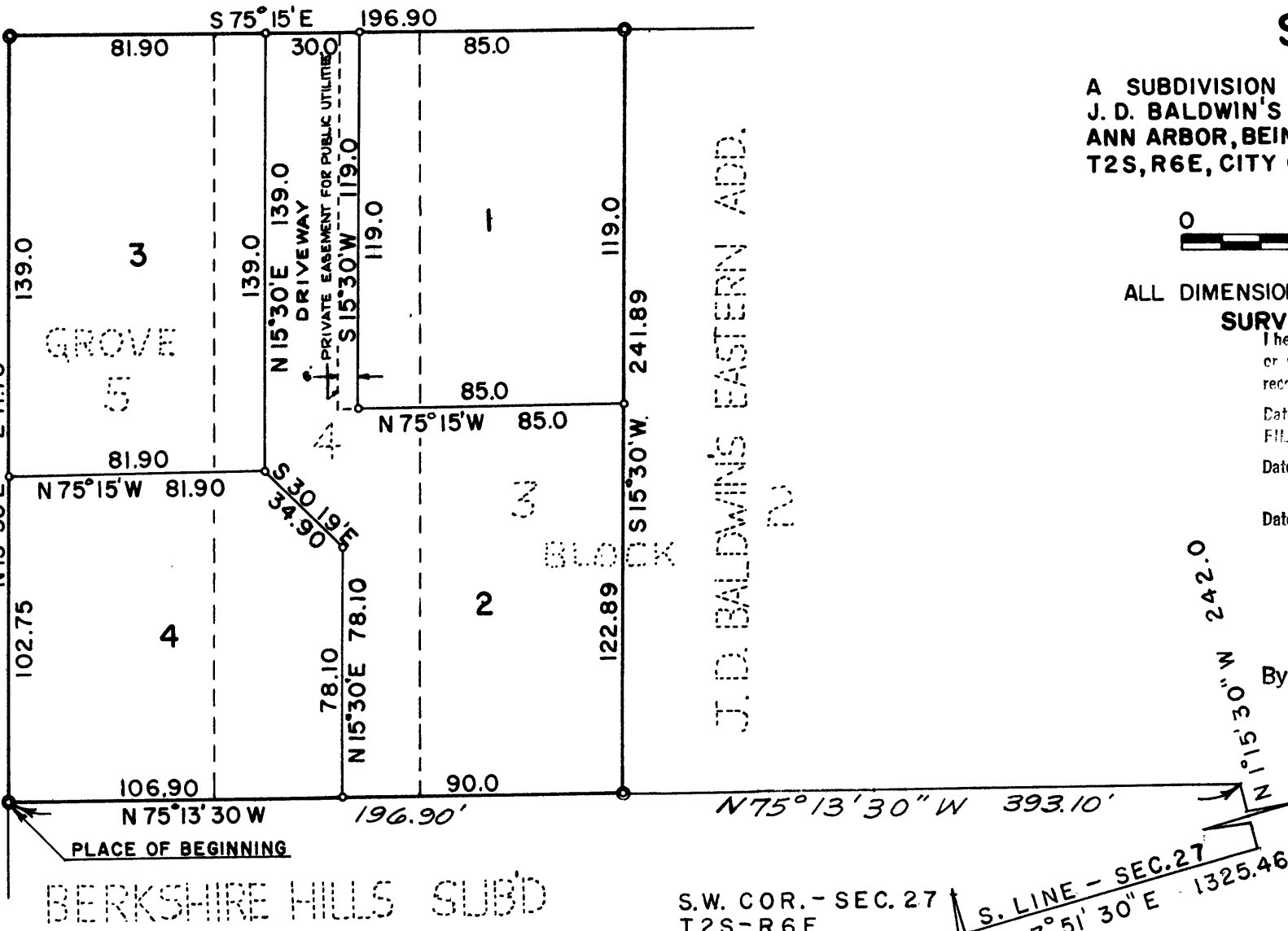


THE HIGHLANDS

GEDDES AVENUE 66' WIDE

HILL STREET 66' WIDE

BURSLEY-PATERSON RESUBDIVISION



L. A. WILSON'S
SUBDIVISION

A SUBDIVISION OF LOTS 3,4, & 5 OF GROVE BLOCK OF J. D. BALDWIN'S EASTERN ADDITION TO THE CITY OF ANN ARBOR, BEING A PART OF THE SW 1/4 OF SECTION 27, T2S, R6E, CITY OF ANN ARBOR, WASHTENAW COUNTY, MICHIGAN



SCALE: 1" = 50'

ALL DIMENSIONS IN FEET AND DECIMALS THEREOF

SURVEY BY ATWELL-HICKS, INC.

I hereby certify this copy is a true copy of map or plat forwarded the Register of deeds for recording.

Date February 27, 1962

FILED IN AUDITOR GENERAL'S DEPT.

Date March 5, 1962

EXAMINED AND APPROVED

Date February 27, 1962

Billie S. Farnum
BILLIE S. FARNUM
AUDITOR GENERAL

By Richard E. Lomax
Richard E. Lomax - Plat Examiner

REGISTERED OFFICE
Washtenaw County
Plat of
L.A. Wilson's Subdivision
was Recorded this 1st day of
March A.D., 1962 at 1:15 o'clock
P.M. in Liber 16 of plats
Page 16
Patricia Newkirk Hardy
Register of Deeds

DEDICATION

KNOW ALL MEN BY THESE PRESENTS, that we, Bernard Deubel and Mildred Deubel, his wife, as proprietors, and Ann Arbor Federal Savings and Loan Association, a Michigan Corporation by Frederick Schmid, Vice-President and Gertrude E. Wenger, Assistant Secretary, as Mortgagee, have caused the land embraced in the annexed plat to be surveyed, laid out and platted to be known as L. A. WILSON'S SUBDIVISION a subdivision of Lots 3, 4 and 5 of Grove Block of J.D. Baldwin's Eastern Addition to the City of Ann Arbor, being a part of the SW 1/4 of Section 27, T2S, R6E, City of Ann Arbor, Washtenaw County, Michigan and that the easement on said plat is not dedicated to the public but reserved for public utilities and any other use designated hereon and no permanent structures are to be located within said easement.

Signed and Sealed in the Presence of:

Gordon T. Hodgson (Witness) Bernard Deubel
Barbara J. Gordon (Witness) Mildred Deubel

ANN ARBOR FEDERAL SAVINGS AND LOAN ASSOCIATION BY:

Bernice A. Mayer (Witness) Frederick Schmid Vice-President
Barbara J. Gordon (Witness) Gertrude E. Wenger Assistant Secretary

ACKNOWLEDGMENT

STATE OF MICHIGAN)
) ss.
County of Washtenaw)

On this 27th day of September, 1961, before me, a Notary Public in and for said county, personally came the above named Bernard Deubel and Mildred Deubel, his wife, known to me to be the persons who executed the above dedication, and acknowledged the same to be their free act and deed.

Barbara J. Gordon
Barbara J. Gordon
Notary Public, Washtenaw County

My Commission expires August 7, 1964

ACKNOWLEDGMENT

STATE OF MICHIGAN)
) ss.
County of Washtenaw)

On this 27th day of September, A.D. 1961, before me, Bernice A. Mayer, a Notary Public in and for said county appeared Frederick Schmid and Gertrude E. Wenger to me personally known, who being each by me duly sworn did say that they are the Vice-President and Assistant Secretary respectively of Ann Arbor Federal Savings and Loan Association, a Michigan Corporation, and that the seal affixed to said instrument is the corporate seal of said Corporation and that said instrument was signed and sealed in behalf of said corporation by authority of its Board of Directors and the said Frederick Schmid and Gertrude E. Wenger acknowledged said instrument to be the free act and deed of said Corporation.

Bernice A. Mayer
Bernice A. Mayer
Notary Public, Washtenaw County

My Commission expires September 13, 1963

DESCRIPTION OF LAND PLATTED

The land embraced in the annexed plat of L. A. WILSON'S SUBDIVISION a subdivision of Lots 3, 4 and 5 of Grove Block of J. D. Baldwin's Eastern Addition to the City of Ann Arbor, being a part of the SW 1/4 of Section 27, T2S, R6E, City of Ann Arbor, Washtenaw County, Michigan is described as follows:
COMMENCING at the SW corner of Section 27, T2S, R6E, Ann Arbor Township, Washtenaw County, Michigan; thence along the south line of said Section 27, N 87°-51'-30" E 1325.46 feet; thence N 1°-15'-30" W 242.00 feet; thence N 75°-13'-30" W 393.10 feet for a PLACE OF BEGINNING; thence along the Westerly line of Lot 5, Grove Block, of J. D. Baldwin's Eastern Addition to the City of Ann Arbor, N 15°-30' E 241.75 feet; thence along the Southerly line of Geddes Avenue, S 75°-15' E 196.90 feet; thence along the Easterly line of Lot 3 of said Grove Block, S 15°-30' W 241.89 feet; thence along the Southerly line of Lots 3, 4 and 5 of said Grove Block, N 75°-13'-30" W 196.90 feet to the Place of Beginning, containing 4 Lots numbered 1 through 4 inclusive.

SURVEYOR'S CERTIFICATE

I hereby certify that the plat hereon delineated is a correct one and that permanent metal monuments consisting of bars not less than one-half inch in diameter and 36 inches in length, or shorter bars of not less than one-half inch in diameter lapped over each other at least 6 inches with an over-all length of not less than 36 inches in depth have been placed at points marked thus (⊙) as thereon shown at all angles in the boundaries of the land platted, at all the intersections of streets, intersections of alleys, or of streets and alleys, and at the intersections of streets and alleys with the boundaries of the plat as shown on said plat.

Richard E. Bidstrup
Richard E. Bidstrup
Registered Land Surveyor No. 11360

CERTIFICATE OF APPROVAL BY THE CITY PLANNING COMMISSION

This plat was approved by the Planning Commission of the City of Ann Arbor, Michigan at a meeting held on the 10th day of October, 1961.

Casper M. Enkemann
Casper M. Enkemann, Chairman
John D. Paul, Secretary

CERTIFICATE OF MUNICIPAL APPROVAL

This plat was approved by the Common Council of the City of Ann Arbor at a meeting held October 16, 1961, and that the width of lots is in compliance with requirements of Section 30, Act 172, of 1929, as amended.

Fred J. Looker
Fred J. Looker, Clerk

COUNTY TREASURER'S CERTIFICATE
Office of County Treasurer, Washtenaw County

I hereby certify, that there are no tax liens or titles held by the State on the lands described hereon, and that there are no tax liens or titles held by individuals on said lands for the five years preceding the 2nd day of November, 1961, and that the taxes for said period of five years are all paid, as shown by the records of this office.
This certificate does not apply to taxes, if any, now in process of collection by township, city or village collecting officer.

W.F. Verner
W.F. Verner, County Treasurer

APPROVAL BY COUNTY PLAT BOARD

This plat was approved on the 8th day of November, 1961, by the Washtenaw County Plat Board.

Patricia Newkirk Hardy
County Register of Deeds
John H. Flook
County Drain Commissioner
J. Martin Rempp
Auditor
Herbert G. Loeffler
Auditor
John P. Cook
Auditor