

CERTIFICATE OF STATE APPROVAL

This Assessor's Plat No. 8, of the City of Ann Arbor has been examined and approved the day of 1922

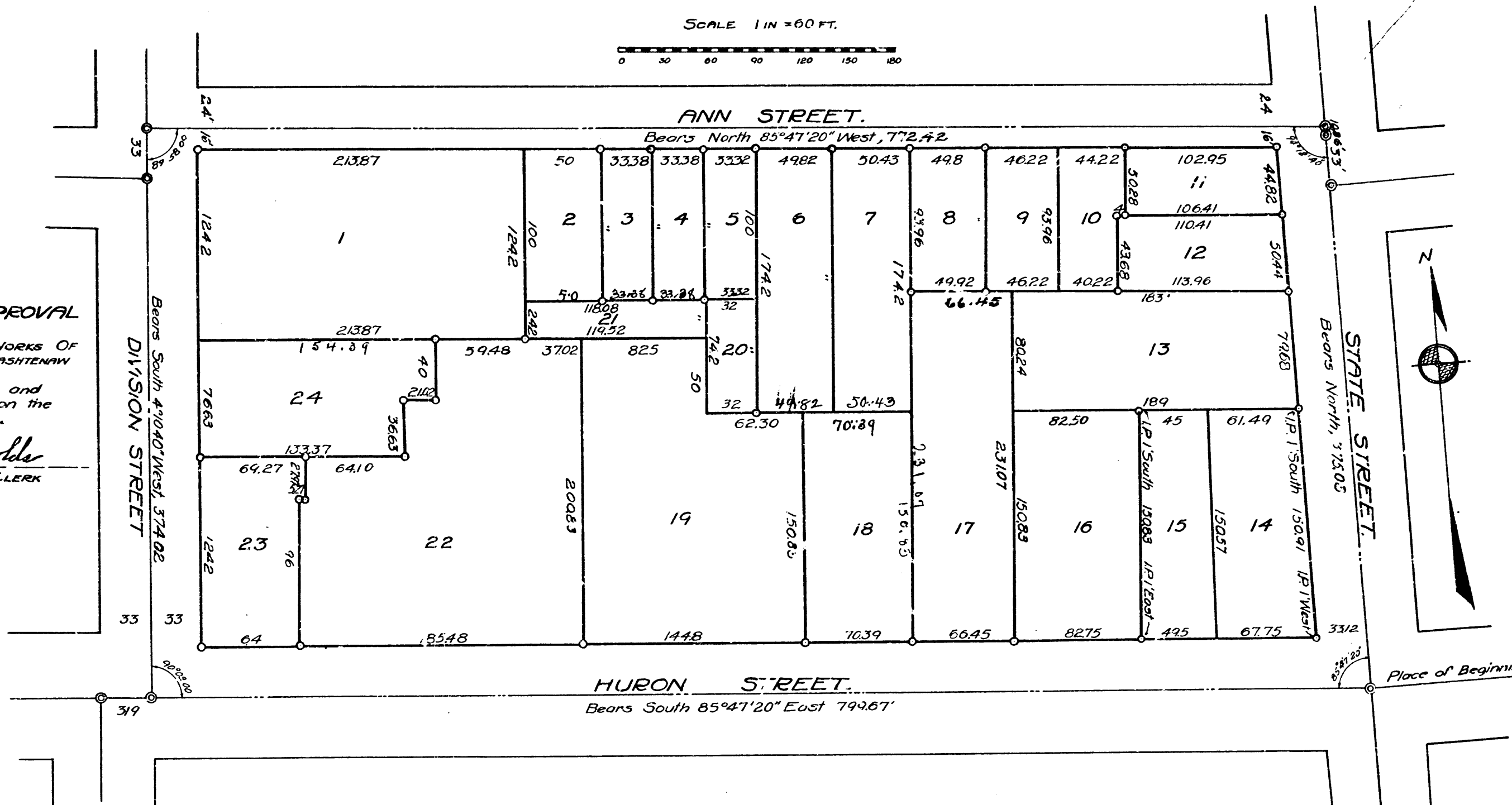
DEPUTY RECORDER GENERAL

ASSESSORS PLAT NO. 8 IN THE CITY OF ANN ARBOR WASHTENAW COUNTY MICHIGAN

CERTIFICATE OF RECORD

REGISTER OF DEEDS OFFICE WASHTENAW COUNTY, MICHIGAN 33. Received for record at o'clock on the day of 1922, and recorded in Liber of Plats page

REGISTER OF DEEDS



CERTIFICATE OF APPROVAL

By The Board of Public Works Of The City Of Ann Arbor Washtenaw County, Michigan

This plat was examined and approved at a meeting held on the day of 1922

Isaac S. Reynolds City Clerk

REGISTER OF DEEDS, Washtenaw County RECEIVED for Record, the 9th day of May A. D. 1922 at 11:15 A. M. and recorded in Lib. 4 Plate 28 P. L. Townsend Registrar of Deeds Agnes L. Woody Deputy

CERTIFICATE OF MUNICIPAL APPROVAL

By The Common Council Of The City Of Ann Arbor, Washtenaw County, Michigan

This plat was examined and approved by the Common Council of the City of Ann Arbor at a meeting held on the day of 1922

Isaac S. Reynolds City Clerk

CERTIFICATE OF COUNTY APPROVAL

By The County Board Of Auditors Of Washtenaw County, State Of Michigan

This plat was examined and approved by the County Board of Auditors of Washtenaw County, Michigan, on the day of 1922

A. L. ... Chairman, W. J. ...

DESCRIPTION

The land included in the annexed Assessor's Plat No. 8, to the City of Ann Arbor, Washtenaw County, State of Michigan, is described as follows: Beginning at the intersection of the west line of section 28, Town 2 South, Range 6, East of Michigan Meridian; said line being the center line of State St, with the center line of Huron St and running thence North along the section line 375.03 ft. to an iron pipe on the center line of State St, and 16.0 ft. north of the south line of Ann St, thence North 85° 47' 20" West, 772.42 ft. to a point on the center line of Division St, 16.0 ft. north of the south line of Ann St, thence South 4° 0' 40" West, 374.02 ft. to the center line of Huron St, and running thence; South 85° 47' 20" East, 799.67 ft. to the place of beginning, being a part of the North East Quarter of Section 29, Town 2 South, Range 6 East of Michigan Meridian.

DEDICATION

KNOW ALL MEN BY THESE PRESENTS, That I, Herbert W. Crippen, Assessor of the City of Ann Arbor, Washtenaw County, State of Michigan, by virtue of authority vested by Act 91 of Public Acts of 1850, as amended, having been duly authorized by the Common Council of the City of Ann Arbor, have caused the land described in the annexed plat to be surveyed, laid out and platted to be known as, "Assessor's Plat No. 8, City of Ann Arbor, Washtenaw County, Michigan" and that the streets and alleys as shown are hereby dedicated to the use of the public.

Witnesses: - Wm. W. McAdam, Harold R. Smith, Herbert W. Crippen, Assessor of the City of Ann Arbor

SURVEYOR'S CERTIFICATE

I hereby certify that the plat hereon delineated is a correct one and that monuments consisting of an iron pipe with brick and stone have been set at the intersections of all streets marked thereon and consisting of an iron pipe at all angles in the boundaries of the land platted and marked thus o. The iron pipe are 3/4" by 3/8". All dimensions are given in feet and decimals thereof

Geo. H. Sandenburgh REGISTERED CIVIL ENGINEER

ACKNOWLEDGMENT

STATE OF MICHIGAN } ss COUNTY OF WASHTENAW } ss On this 22nd day of May A.D. 1922, before me a Notary Public in and for said City of Ann Arbor, personally came the above named Herbert W. Crippen, Assessor of the City of Ann Arbor, known to me to be the person who executed the above dedication and acknowledged the same to be his free act and deed as such Assessor My Commission expires March 29 1926

Martha C. Deane Notary Public