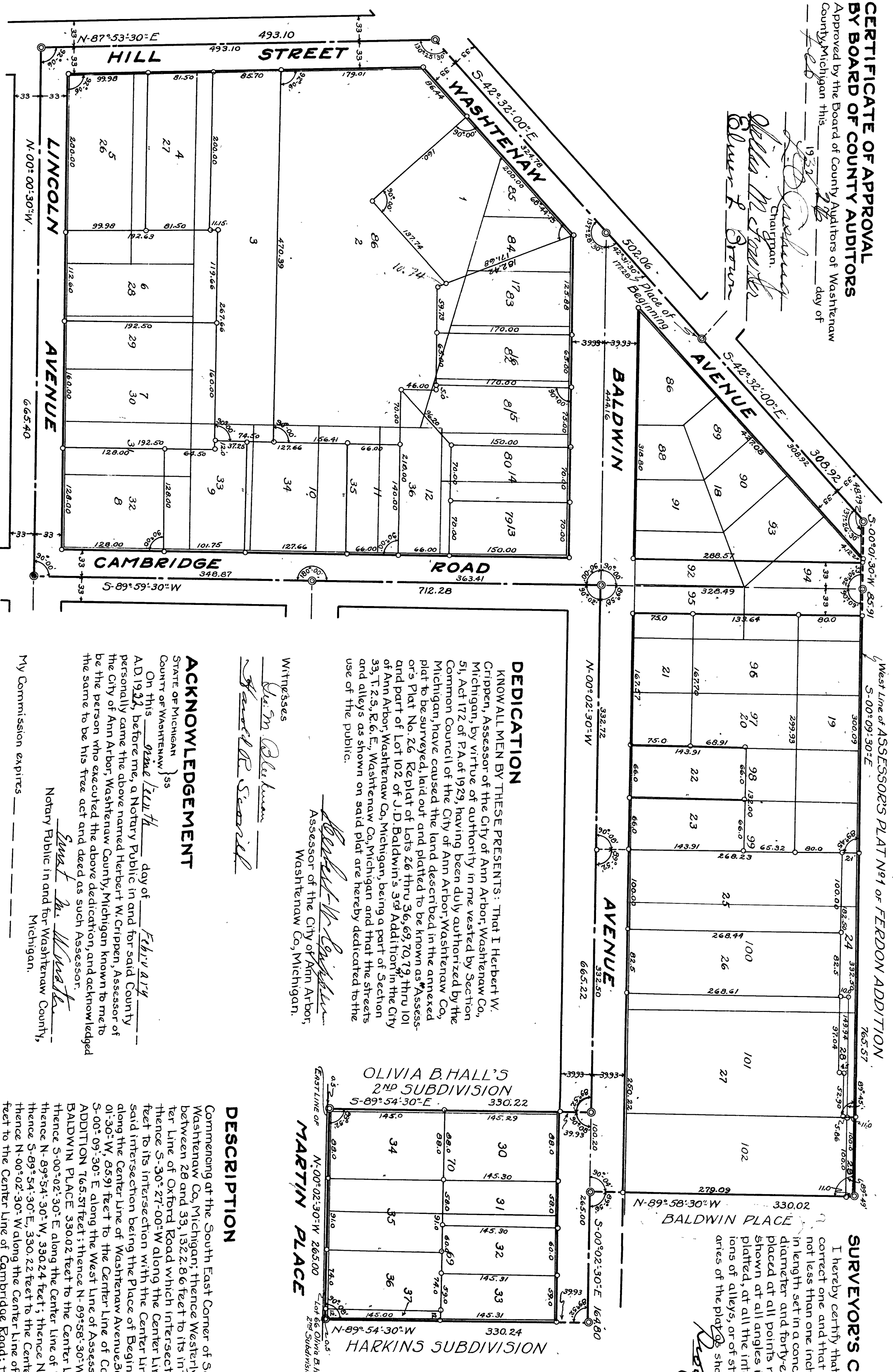
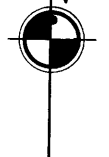


Washburn
 Queller's Plat No 26
 Mar 9 32 9 AM
 John Lemming

Mar 17 1932
 J. B. Shuman
 DEPUTY REGISTER

"ASSESSOR'S PLAT No 26"
 REPLAT OF LOTS 26 THRU 36, 69, 70, 79 THRU
 101 AND PART OF LOT 102 OF J.D. BALDWIN'S 3RD ADDITION
 IN THE
 CITY OF ANN ARBOR,
 WASHTENAW CO, MICHIGAN.

SCALE 1"=100'



SURVEYOR'S CERTIFICATE

I hereby certify that the plat hereon delineated is a correct one and that permanent metal monuments of not less than one inch in diameter and fifteen inches in length set in a concrete base at least four inches in diameter and forty-eight inches in depth have been placed at all points marked thus: ⊙ as thereon shown at all angles in the boundaries of the land platted, at all the intersections of streets, intersections of alleys, or of streets and alleys with the boundaries of the plat as shown on said plat.

Raymond H. Sandberg
 Registered Civil Engineer

DEDICATION

KNOW ALL MEN BY THESE PRESENTS: That I Herbert W. Crispin, Assessor of the City of Ann Arbor, Washtenaw Co, Michigan, by virtue of authority in me vested by Section 51, Act 172 of PA of 1929, having been duly authorized by the Michigan Council of the City of Ann Arbor, Washtenaw Co, Michigan, have caused the land described in the annexed plat to be surveyed, laid out and platted to be known as "Assessor's Plat No. 26" Replat of Lots 26 thru 36, 69, 70, 79, thru 101 of J.D. Baldwin's 3rd Addition in the City of Ann Arbor, Washtenaw Co, Michigan, being a part of Section 33, T. 25, R. 6, E., Washtenaw Co, Michigan and that the streets and alleys as shown on said plat are hereby dedicated to the use of the public.

Herbert W. Crispin
 Assessor of the City of Ann Arbor,
 Washtenaw Co, Michigan.

Witnesses
Herbert W. Crispin
Herbert W. Crispin

ACKNOWLEDGEMENT

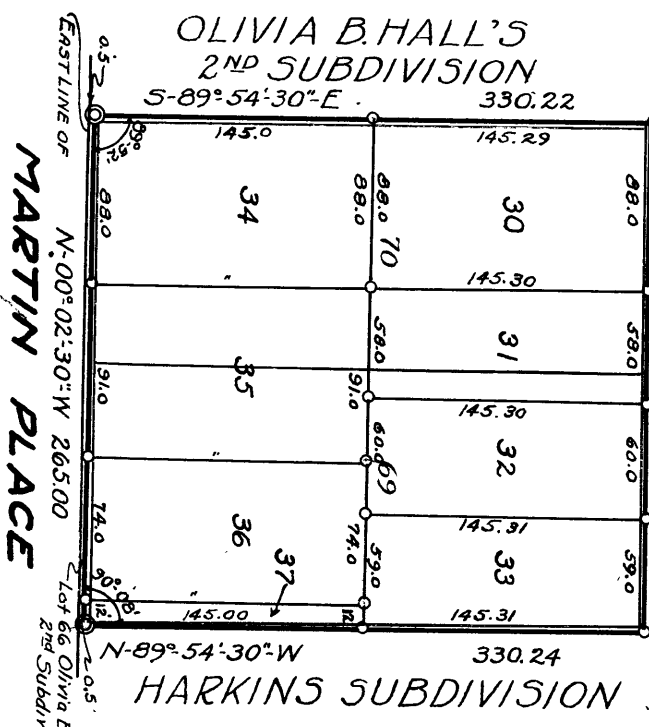
On this 9th day of February A.D. 1932, before me, a Notary Public in and for said County of Michigan, personally came the above named Herbert W. Crispin, Assessor of the City of Ann Arbor, Washtenaw Co, Michigan known to me to be the person who executed the above dedication, and acknowledged the same to be his free act and deed as such Assessor.

Notary Public in and for Washtenaw County,
 Michigan.
Clara M. Wanda

My Commission expires _____

DESCRIPTION

Commencing at the South East Corner of Section 28, T. 25, R. 6, E., Washtenaw Co, Michigan; thence Westerly on the Section Line between 28 and 33, 1322.86 feet to its intersection with the Center Line of Oxford Road which intersection is the 1/8 Corner; thence S-30°-27'-00"-W along the Center Line of Oxford Road 412.52 feet to its intersection with the Center Line of Washtenaw Avenue, said intersection being the Place of Beginning; thence S-42°-37'-00"-E 01'-30"-W, 65.91 feet to the Center Line of Cambridge Road; thence S-00°-09'-30"-E along the West Line of Assessor's Plat No. 1 of FERDON ADDITION 765.57 feet; thence N-69°-58'-30"-W along the North Line of BALDWIN PLACE 330.02 feet to the Center Line of Baldwin Avenue; thence S-00°-02'-30"-E along the Center Line of Baldwin Avenue 164.80 feet; thence N-69°-54'-30"-W, 330.22 feet to the Center Line of Baldwin Avenue; thence N-00°-02'-30"-W along the Center Line of Baldwin Avenue 665.22 feet to the Center Line of Cambridge Road; thence S-89°-59'-30"-W along the Lincoln Avenue 665.40 feet to the Center Line of Hill Street; thence N-87°-55'-30"-E along the Center Line of Hill Street 493.10 feet to the Center Line of Washtenaw Avenue; thence S-42°-32'-00"-E along the Center Line of Washtenaw Avenue 502.06 feet to the Place of Beginning.



CERTIFICATE OF MUNICIPAL APPROVAL

This plat was approved by the Board of Public Works of the City of Ann Arbor, Washtenaw Co, Michigan at a meeting held Feb 20 1932
Herbert W. Crispin
 Clerk

*Washed Hill's 26
 Queller's Plat No 26*