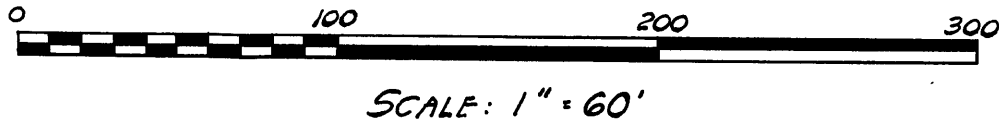


FRISINGER LAND COMPANY'S FIRST SUBDIVISION

IN THE CITY OF ANN ARBOR, WASHTENAW COUNTY, MICHIGAN
PART OF THE SOUTH HALF SECTION 33 T.2 S. R.6 E. WASHTENAW COUNTY, MICHIGAN.

DIMENSIONS ARE GIVEN IN FEET AND DECIMALS THEREOF.

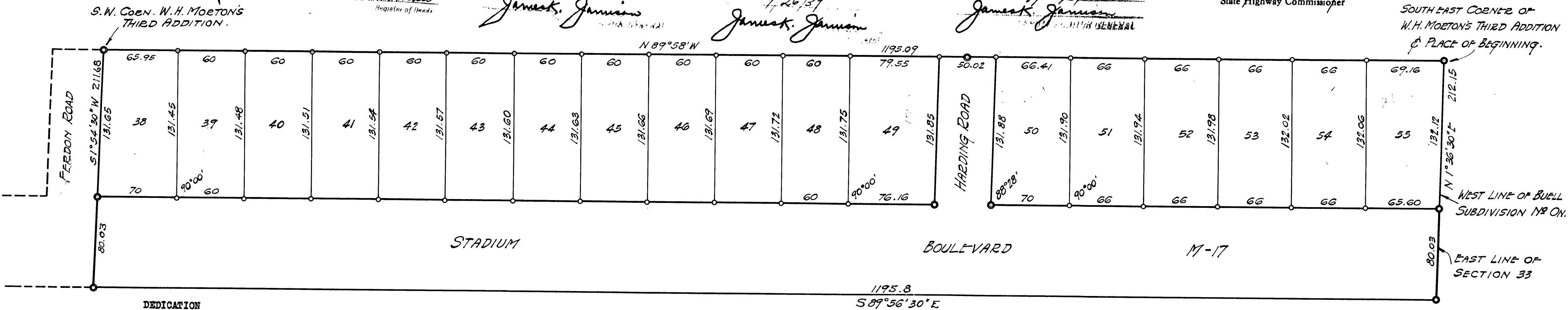
Register's Office
Washtenaw County, Michigan
Plat of Frisinger Land Company's
First Subdivision
July 27th day of
1937
Katherine W. Skau
Register of Deeds



I HEREBY CERTIFY THAT THIS COPY IS A TRUE AND CORRECT COPY OF THE ORIGINAL RECORD OF DEEDS

WIDTH AND LOCATION OF STATE TRUNK LINE AND FEDERAL AID ROADS O. K.
Murray D. Van Wageningen
State Highway Commissioner

Examined and Approved
8/2/37
James J. Jannison
1/26/37
James J. Jannison
7/26/37
James J. Jannison



KNOW ALL MEN BY THESE PRESENTS, That we his wife as proprietors have caused the land embraced in the annexed plat to be surveyed, laid out and platted, to be known as Frisinger Land Company's First Subdivision, in the City of Ann Arbor, Washtenaw County, Michigan, and that the streets and alleys as shown on said plat are hereby dedicated to the use of the public.

Signed and sealed in the Presence of
Robert O. Morgan L.S.
L.S.
L.S.
L.S.

STATE OF MICHIGAN
County of Washtenaw
On this 17th day of May 1937 before me, a Notary Public in and for said county, personally came the above named Robert O. Morgan and Sarah Morgan his wife, known to me to be the persons who executed the above dedication, and acknowledged the same to be their free act and deed.
Notary Public, Washtenaw County, Michigan.
My Commission expires July 21, 1937.

KNOW ALL MEN BY THESE PRESENTS, That we, the Frisinger Land Company, a Michigan Corporation by Louis C. Andrews, Vice-President and Edward F. Conlin, Secretary, as proprietor, have caused the land embraced in the annexed plat to be surveyed, laid out and platted to be known as Frisinger Land Company's First Subdivision in the City of Ann Arbor, Washtenaw County, Michigan, part of the south-half of section 33, T.2 S., R.6 E., Washtenaw County, Michigan and that the streets and alleys as shown on said plat are hereby dedicated to the use of the public.

Signed and sealed in the Presence of
Louis C. Andrews Vice-Pres.
Edward F. Conlin Sec.

STATE OF MICHIGAN
County of Washtenaw
On this 12th day of May A.D. 1937 before me, Louis C. Andrews, a Notary Public in and for said county appeared Louis C. Andrews and Edward F. Conlin, to me personally known, who being each by me duly sworn did say that they are the President and Secretary respectively of the Frisinger Land Company, a Michigan Corporation and that the Seal affixed to said instrument is the corporate seal of said corporation and that said instrument was signed and sealed in behalf of said corporation by authority of its Board of Directors and the said Louis C. Andrews and

and Edward F. Conlin acknowledged said instrument to be the free act and deed of said corporation.
Notary Public, Washtenaw County, Michigan.
My commission expires Nov. 1, 1939.

DESCRIPTION
The land embraced in the annexed plat of the Frisinger Land Company's First Subdivision in the City of Ann Arbor, Washtenaw County, Michigan, part of the south half of section 33, T.2 S., R.6 E., Washtenaw County, Michigan is described as follows: Beginning at the south east corner of W. H. Morton's Third Addition; thence north 89 degrees, 58 minutes west 1195.09 feet to the south west corner of said addition, thence south one degree, 54 minutes, 30 seconds west 211.68 feet to the south line of State Trunk Line Highway M-17; thence south 89 degrees, 56 minutes, 30 seconds east along said south line 1195.8 feet; thence north 1 degree, 36 minutes, 30 seconds east 212.15 feet to the place of beginning, being a part of the south one half of section 33, T.2 S., R.6 E., Washtenaw County, Michigan.

SURVEYOR'S CERTIFICATE.
I hereby certify, that the plat hereon delineated is a correct one and that permanent metal monuments of not less than one inch in diameter and fifteen inches in length set in a concrete base at least four inches in diameter and forty-eight inches in depth have been placed at points marked thus © as hereon shown at all angles in the boundaries of the land platted, at all the intersections of streets, intersections of alleys, or of streets and alleys, and at the intersections of streets and alleys with the boundaries of the plat as shown on said plat.
Registered Surveyor and Civil Engineer.

Certificate of Approval by the Common Council
This plat was approved by The Common Council of the City of Ann Arbor at a meeting held July 1, 1937.
Clerk

Certificate of Approval by the Board of Public Works
This plat was approved by the Board of Public Works of the City of Ann Arbor at a meeting held July 1, 1937.
Clerk

CERTIFICATE OF APPROVAL BY THE BOARD OF COUNTY AUDITORS
Approved by the Board of County Auditors of Washtenaw County, Michigan, this TWENTY-FIFTH day of JUNE 1937.
Chairman
Otto D. Smith
Elmer L. Brown

Certificate as to STATE TRUNK LINE OR FEDERAL AIDED ROADS
We hereby certify that said plat appears to include land located on a state trunk line or federal aided road.
County Road Commission.
State Highway Commissioner.

COUNTY TREASURER'S CERTIFICATE RELATING TO TAXES
(Sec. 135, Act 206, 1893, as amended- Sec. 4134, C.L. 1915)
Office of the County Treasurer, Washtenaw County, Michigan.
I hereby certify, that there are no tax liens or titles held by the state on the lands described below and that there are no tax liens or titles held by individuals on said lands, for the five years preceding the 15th day of May 1937 and that the taxes for said period of five years are paid, as shown by the records of this office.
This certificate does not apply to taxes, if any, now in process of collection by township, city or village collecting officers.

DESCRIPTION
The land embraced in the annexed plat of the Frisinger Land Company's First Subdivision in the City of Ann Arbor, Washtenaw County, Michigan, part of the south half of section 33, T.2 S., R.6 E., Washtenaw County, Michigan, is described as follows: Beginning at the south east corner of W. H. Morton's Third Addition; thence north 89 degrees, 58 minutes west 1195.09 feet to the south west corner of said addition; thence south 1 degree, 54 minutes, 30 seconds west 211.68 feet to the south line of State Trunk Line Highway M-17; thence south 89 degrees, 56 minutes, 30 seconds east along said south line 1195.8 feet; thence north one degree, 36 minutes, 30 seconds east 212.15 feet to the place of beginning, being a part of the south one half of section 33, T.2 S., R.6 E., Washtenaw County, Michigan.
County Treasurer.