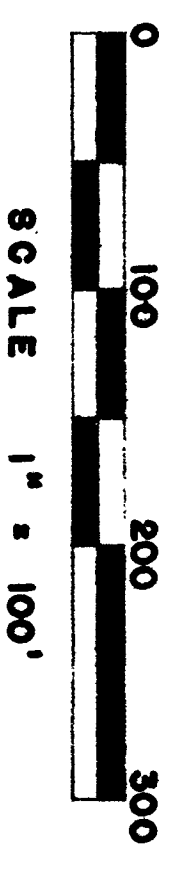


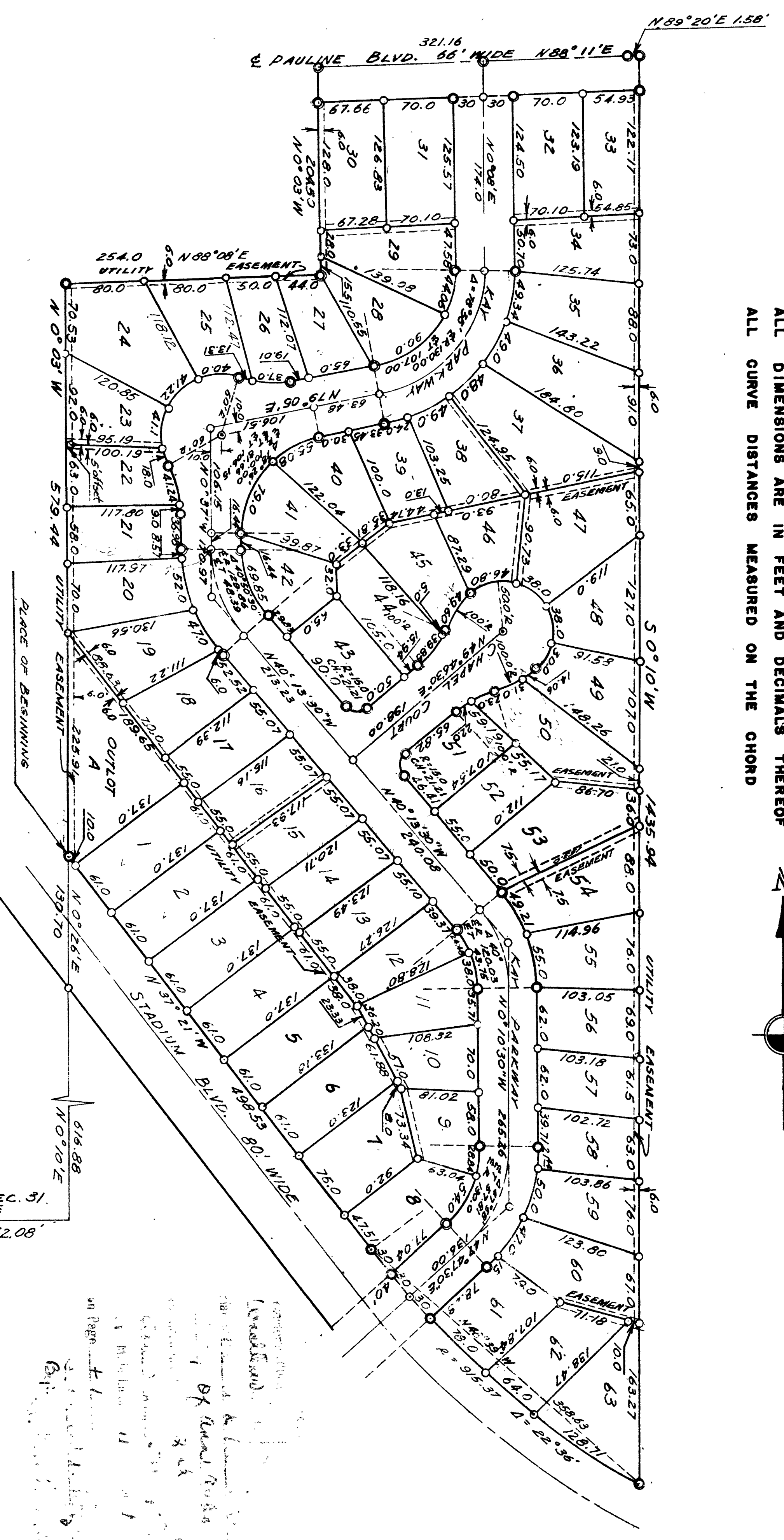
BARNARD HEIGHTS NO 2

A SUBDIVISION OF PART OF THE W 1/2 OF THE  
 NE 1/4 OF SECTION 31, TOWN 2 SOUTH, RANGE  
 6 EAST, CITY OF ANN ARBOR,  
 WASHTEHAW COUNTY, MICHIGAN

SURVEY BY ATWELL - HICKS INC.



ALL DIMENSIONS ARE IN FEET AND DECIMALS THEREOF  
 ALL CURVE DISTANCES MEASURED ON THE CHORD



DEDICATION

KNOW ALL MEN BY THESE PRESENTS, that we, Hannah Building Co.,  
 a Michigan corporation by  
 Eugene H. Hannah, President, and Eunice L. Hannah, Vice  
 President, or proprietor, have caused the land embraced in the embraced plat

to be surveyed, laid out and platted to be known as: Barnard Heights No. 2.  
 A Subdivision of Part of the West 1/2 of the north-  
 east 1/4 of Section 31, Town 2 South, Range 6 East, City  
 of Ann Arbor, Washtehaw County, Michigan; and that  
 the Boulevard, Parkway and Court as shown on said  
 plat are hereby dedicated to the use of the public.

Signed and Sealed in  
 the Presence of:  
 Francis Gammann  
 Frances Gammann (Witness)  
 Elizabeth MacGregor  
 Elizabeth MacGregor (Witness)  
 Eunice L. Hannah Vice Pres

ACKNOWLEDGMENT

STATE OF MICHIGAN  
 County of Washtehaw  
 On this 1st day of August, A.D. 1952, before  
 me, Evangelina P. Hicks, a Notary Public in and for  
 said county appeared Eugene H. Hannah and Eunice L. Hannah.

to me personally known, who being each by me duly sworn did say that they are the  
 President and Vice President respectively of the Hannah Building  
 Co., a Michigan corporation,  
 and that the seal affixed to said instrument is the corporate seal of said corporation and  
 that said instrument was signed and sealed in behalf of said corporation by authority  
 of its Board of Directors and the said Eugene H. Hannah and  
 Eunice L. Hannah acknowledge said  
 instrument to be the free act and deed of said corporation.

My Commission expires Nov. 18, 1955.

APPROVAL BY BOARD OF COUNTY AUDITORS

Approved by the Board of County Auditors of Washtehaw  
 County, Michigan, this 21st day of August, 1952.  
 J. Martin Hepp  
 Adolph F. Gross  
 Herbert G. Loeffler

DESCRIPTION OF LAND PLATTED

The land embraced in the embraced plat of Barnard Heights No. 2, a  
 Subdivision of part of the west 1/2 of the northeast 1/4  
 of Section 31, Town 2 South, Range 6 East, City of Ann  
 Arbor, Washtehaw County, Michigan, is described as follows:

Commencing at the west 1/4 post of Section 31, Town  
 2 South, Range 6 East, Ann Arbor Township, Washtehaw  
 County, Michigan; thence north 89°-53'-00" east 2942.  
 08 feet; thence north 0°-10'-00" east 616.88 feet; thence  
 north 0°-26'-00" east 130.70 feet for a PLACE OF BE-  
 GINNING; thence north 0°-03'-00" west 579.44 feet;  
 thence north 88°-08'-00" east 254.00 feet; thence north  
 0°-03'-00" west 204.50 feet; thence north 88°-11'-00"  
 east 321.16 feet; thence north 89°-20'-00" east 1.58 feet  
 thence 50°-10'-00" west 1435.94 feet; thence in the arc  
 of a circular curve to the right with radius of 915.37 feet  
 subtended by a chord which bears north 48°-39'-00" west  
 358.63 feet; thence north 37°-21'-00" west 498.53 feet  
 to the place of beginning, being part of the west 1/2 of  
 the northeast 1/4 of Section 31, Town 2 South, Range 6  
 East, City of Ann Arbor, Washtehaw County, Michigan.

CERTIFICATE OF APPROVAL BY THE  
 CITY PLANNING COMMISSION

This plat was approved by the Planning Commission  
 of the City of Ann Arbor at a meeting held on the  
 7th day of August, 1952.

Frederick N. McComber (Chairman)  
 William C. Walz (Secretary)

MUNICIPAL APPROVAL

This plat was approved by the Common Council  
 of the City of Ann Arbor, Michigan,  
 August 16, 1952.  
 Fred J. Looker (Clerk)

APPROVED  
 CHARLES M. ZIEGLER  
 STATE NOTARY PUBLIC

Approved August 25th 1952  
 William Quinn Purdy

SURVEYOR'S CERTIFICATE

I hereby certify that the plat hereon delineated is a correct  
 one and that permanent metal monuments consisting of bars  
 not less than one-half inch in diameter and 48 inches in length,  
 encased in a concrete cylinder at least 4 inches in diameter  
 and 48 inches in depth have been placed at points marked thus  
 (...) as thereon shown at all angles in the boundaries of the  
 land platted, at all the intersections of Boulevards and Parkway,  
 and Parkway with the boundaries of the plat as shown on said  
 Plat.

Herbert S. Hicks  
 Registered Professional Engineer and Surveyor  
 No. 1715

CERTIFICATE AS TO STATE TRUNK LINE OR FEDERAL AID ROADS

We hereby certify that said plat appears to include land located on a state trunk line or  
 federal aid road.

MUNICIPAL APPROVAL

This plat was approved by the Board of Public Works  
 of the City of Ann Arbor at a meeting held  
 August 16, 1952.

Fred J. Looker (Clerk)

COUNTY TREASURER'S CERTIFICATE

Office of County Treasurer, Washtehaw County,  
 I hereby certify, that there are no tax liens or files held by the State on the land de-  
 scribed hereon, and that there are no tax liens or files held by individuals on said lands,  
 for the five years preceding the August 1952, and that the taxes for said period of  
 five years are all paid, as shown by the records of this office.

W. F. Verrier  
 County Treasurer