

I hereby certify this copy is a true copy of map or plat, forwarded the register of deeds for recording.
 September 22, 1960
 FILED IN AUDITOR GENERAL'S DEPT.
 Date September 28, 1960
 EXAMINED AND APPROVED
 September 22, 1960

OTIS M. SMITH
 AUDITOR GENERAL
 D. L. MacDougall
 D. L. MacDougall, Plat Engineer
 EAST 1/4 COR.
 SECTION 19
 T. 2 S., R. 6 E.

Plat of
 Devon Subdivision
 was Recorded this 26th day of
 September A.D., 1960 at 2:33
 P. M. in Liber 65 of plate
 in Page 29

ACKNOWLEDGMENT

ORIGINAL

DEVON SUBDIVISION
 OF PART OF THE SE 1/4 OF SECTION 19, AND PART OF THE SW 1/4 OF SECTION 20, T 2 S., R 6 E., CITY OF ANN ARBOR, WASHTENAW COUNTY, MICHIGAN; BEING A REPLAT OF PART OF LOTS 15 AND 16 OF THE PLAT OF THE SE 1/4 OF SECTION 19, T 2 S., R 6 E., AND A REPLAT OF PART OF LOTS 15 AND 16 OF SPRINGHILL ADDITION TO THE CITY OF ANN ARBOR, MICHIGAN

SCALE 1"=100'
 ALL DIMENSIONS IN FEET AND DECIMALS THEREOF
 ALL DIMENSIONS ON CURVES ARE ARC LENGTHS
 SURVEY BY ATWELL-HICKS, INC.

STATE OF FLORIDA)
) ss.
 County of Pinellas)
 On this 27th day of March, 1960, before me, a Notary Public, in and for said County, personally came Martha Ross, known to me to be the person who executed the above dedication and acknowledged the same to be her free act and deed.

Jean Utberg
 Notary Public, Pinellas County, Florida
 My Commission expires Jan. 31, 1964
 Bonded by American Surety Co. of N.Y.

DESCRIPTION OF LAND PLATTED

The land embraced in the annexed plat of DEVON SUBDIVISION of part of the SE 1/4 of Section 19, and part of the SW 1/4 of Section 20, T2S, R6E, City of Ann Arbor, Washtenaw County, Michigan; being a replat of part of Lots 15 and 16 of the Plat of the SE 1/4 of Section 19, T2S, R6E, and a replat of part of Lots 15 and 16 of Springhill Addition to the City of Ann Arbor, Michigan is described as follows:
 Commencing at the E 1/4 corner of Section 19, T2S, R6E City of Ann Arbor, Washtenaw County, Michigan; thence along the east line of said Section 19, S 0°-21'-45" W 796.77 feet for a PLACE OF BEGINNING; thence N 72°-37'-30" E 40.17 feet; thence S 89°-49'-15" E 218.65 feet; thence S 0°-20' W 135.00 feet; thence S 89°-49'-15" E 375.00 feet; thence S 0°-20' W 198.71 feet; thence N 89°-51' W 180.00 feet; thence S 0°-20' W 60.00 feet; thence N 89°-51' W 452.08 feet; thence S 10°-34' W 125.00 feet; thence N 75°-57' W 54.00 feet; thence S 9°-26' W 183.21 feet; thence S 64°-47' E 114.00 feet; thence S 0°-21'-45" W 855.94 feet; thence N 60°-45' W 68.52 feet; thence N 0°-21'-45" E 275.82 feet; thence N 89°-14'-30" W 116.42 feet; thence N 0°-46' E 48.00 feet; thence N 76°-57' W 233.68 feet; thence N 0°-32' E 971.63 feet; thence S 87°-22'-45" E 401.34 feet; thence N 0°-21'-45" E 211.99 feet to the Place of Beginning, containing 48 lots numbered 1 through 48 inclusive.

SURVEYOR'S CERTIFICATE

I hereby certify that the plat hereon delineated is a correct one and that permanent metal monuments consisting of bars not less than one-half inch in diameter and 36 inches in length, or shorter bars of not less than one-half inch in diameter lapped over each other at least 6 inches with an over-all length of not less than 36 inches, encased in a concrete cylinder at least 4 inches in diameter and 36 inches in depth have been placed at points marked thus (O) as thereon shown at all angles in the boundaries of the land platted, at all the intersections of lines of streets, and at the intersections of lines of streets with the boundaries of the plat as shown on said plat.

Robert J. Jagow
 Registered Land Surveyor #6998

CERTIFICATE OF APPROVAL BY THE CITY PLANNING COMMISSION

This plat was approved by the Planning Commission of the City of Ann Arbor, Michigan at a meeting held on the 27th day of March, 1960.

Dean W. Coston, Chairman
 John D. Paul, Secretary

COUNTY TREASURER'S CERTIFICATE
 Office of County Treasurer, Washtenaw County

I hereby certify, that there are no tax liens or titles held by the State on the lands described hereon, and that there are no tax liens or titles held by individuals on said lands for the five years preceding the 15th day of September, 1960, and that the taxes for said period of five years are all paid, as shown by the records of this office. This certificate does not apply to taxes, if any, now in process of collection by township, city or village collecting officers.

W. F. Verner, County Treasurer

APPROVAL BY COUNTY PLAT BOARD

This plat was approved on the 16th day of September, 1960, by the Washtenaw County Plat Board.

Patricia Newkirk Hardy, County Register of Deeds
 John H. Flook, County Drain Commissioner
 J. Martin Rempp, Auditor
 Herbert G. Loeffler, Auditor
 John P. Cook, Auditor

DEDICATION

KNOW ALL MEN BY THESE PRESENTS, that we, Mark Ross and Martha Ross, his wife, Russell C. Pryce and Thelma L. Pryce, his wife, Barbara Lapham Bowen, and Caroline Bowen Nimke as proprietors have caused the land embraced in the annexed plat to be surveyed, laid out and platted, to be known as DEVON SUBDIVISION of part of the SE 1/4 of Section 19, and part of the SW 1/4 of Section 20, T2S, R6E, City of Ann Arbor, Washtenaw County, Michigan; being a replat of part of Lots 15 and 16 of the Plat of the SE 1/4 of Section 19, T2S, R6E, and a replat of part of Lots 15 and 16 of Springhill Addition to the City of Ann Arbor, Michigan and that the roads and courts as shown on said plat are hereby dedicated to the use of the public.

Signed in the Presence of:
 Robert J. Jagow, Witness
 Jean Utberg, Witness
 Mark Ross
 Martha Ross
 Russell C. Pryce
 Thelma L. Pryce
 Barbara Lapham Bowen
 Caroline Bowen Nimke

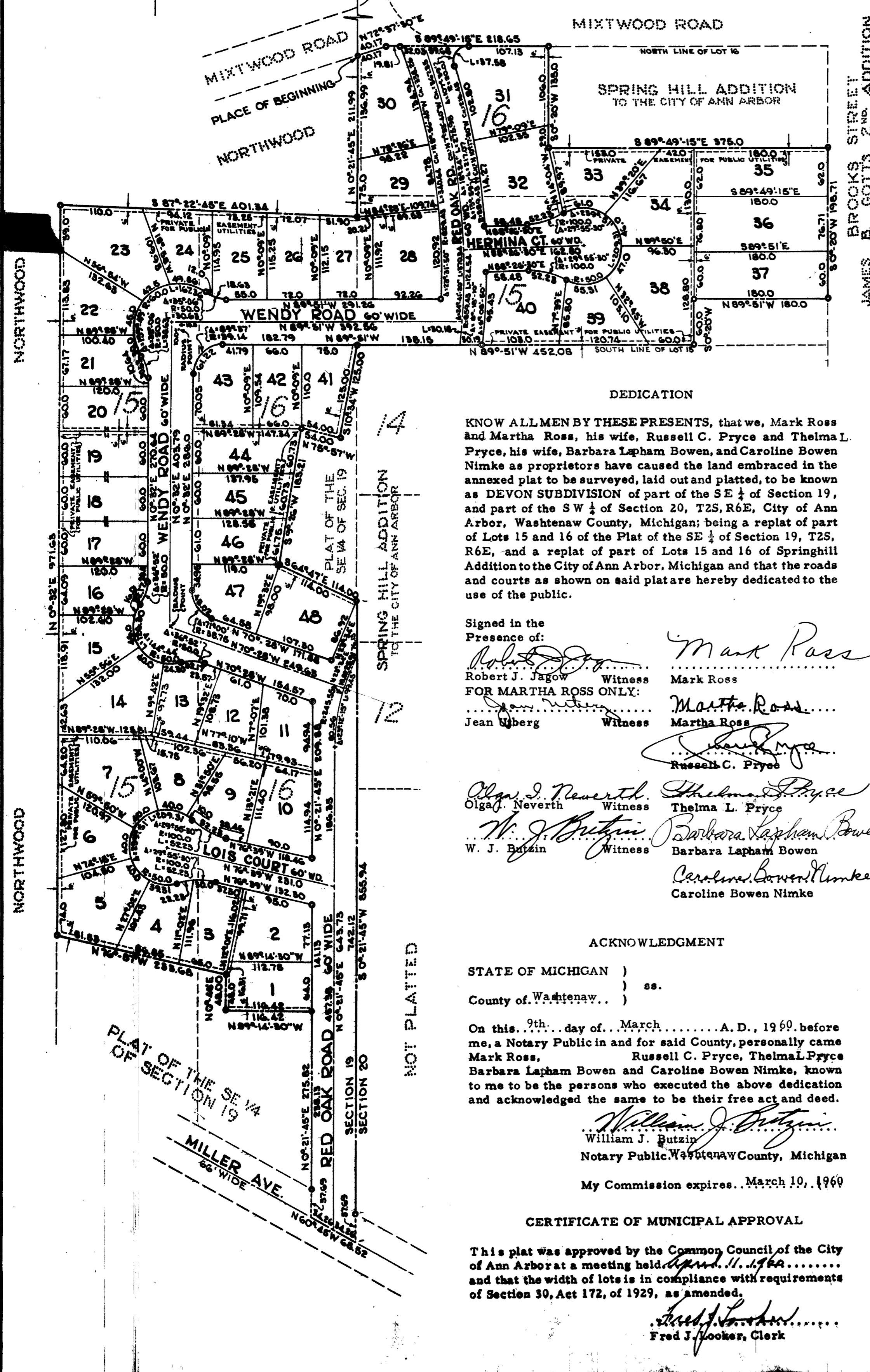
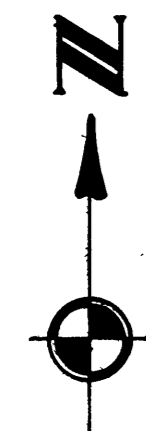
ACKNOWLEDGMENT

STATE OF MICHIGAN)
) ss.
 County of Washtenaw)
 On this 9th day of March, 1960, before me, a Notary Public in and for said County, personally came Mark Ross, Russell C. Pryce, Thelma L. Pryce, Barbara Lapham Bowen and Caroline Bowen Nimke, known to me to be the persons who executed the above dedication and acknowledged the same to be their free act and deed.
 William J. Butzin
 Notary Public, Washtenaw County, Michigan
 My Commission expires March 10, 1960

CERTIFICATE OF MUNICIPAL APPROVAL

This plat was approved by the Common Council of the City of Ann Arbor at a meeting held on the 11th day of March, 1960, and that the width of lots is in compliance with requirements of Section 30, Act 172, of 1929, as amended.
 Fred J. Locker, Clerk

0967/92/60



NOT PLATTED