

Primary Control Point

AAGRS No. 0008A

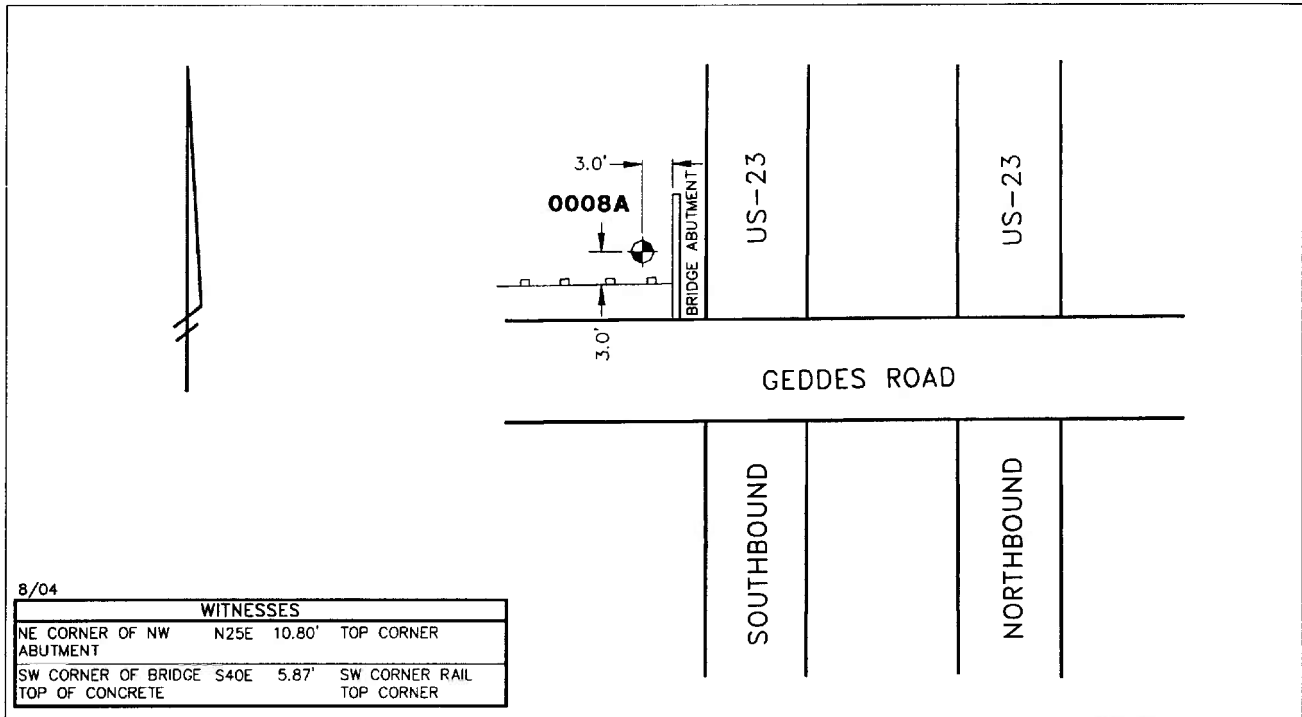
City of Ann Arbor

NGS PID AA5184

Public Services Area • Project Management Unit

CONTROL STATION DATA SHEET

Approximate Location: Geddes Rd. and US-23



STATION 0008A IS LOCATED ON THE NORTH SIDE OF GEDDES ROAD , WEST OF US-23, SAID STATION BEING IN THE SOUTHWEST 1/4 OF SECTION 25, ANN ARBOR TOWNSHIP, MICHIGAN. THE STATION IS LOCATED 3' NORTH OF THE GUARDRAIL ALONG THE NORTH SIDE OF GEDDES ROAD AND 3' WEST OF THE WEST EDGE OF THE CONCRETE BRIDGE ABUTMENT AT THE WEST END OF THE GEDDES ROAD BRIDGE OVER US-23. SAID STATION IS A PRIMARY CONTROL STATION AND IS DESCRIBED AS THE 1993 EDITION OF THE CITY OF ANN ARBOR BRASS DISC, SET IN CONCRETE PER DETAIL 1 AND IS FLUSH WITH THE GROUND. THIS STATION WAS SET BY THE CITY OF ANN ARBOR IN 1993 AND IS PAIRED WITH STATION 0008B.

Horizontal		Vertical	
Latitude (dms)	N 42 16 28.23592	Accuracy	2nd Order Class II
Longitude (dms)	W 83 40 35.68736	Datum	NAVD 88
State Plane Zone	2113 MI South	Elevation in meters	249.562
Scale	0.99996325	Elevation in International feet	818.77
Geoid Height in meters	-33.98		
Convergence (dms)	0 28 10.6		
Accuracy	1st Order		
Datum	NAD 83		No. 0008A
Easting (X) in meters	4056925.102		Sector: EC
Northing (Y) in meters	86264.526		
Easting (X) in International feet	13310121.726	Grid Azimuth to	
Northing (Y) in International feet	283020.098	Control Station 0008B	02°32'27"