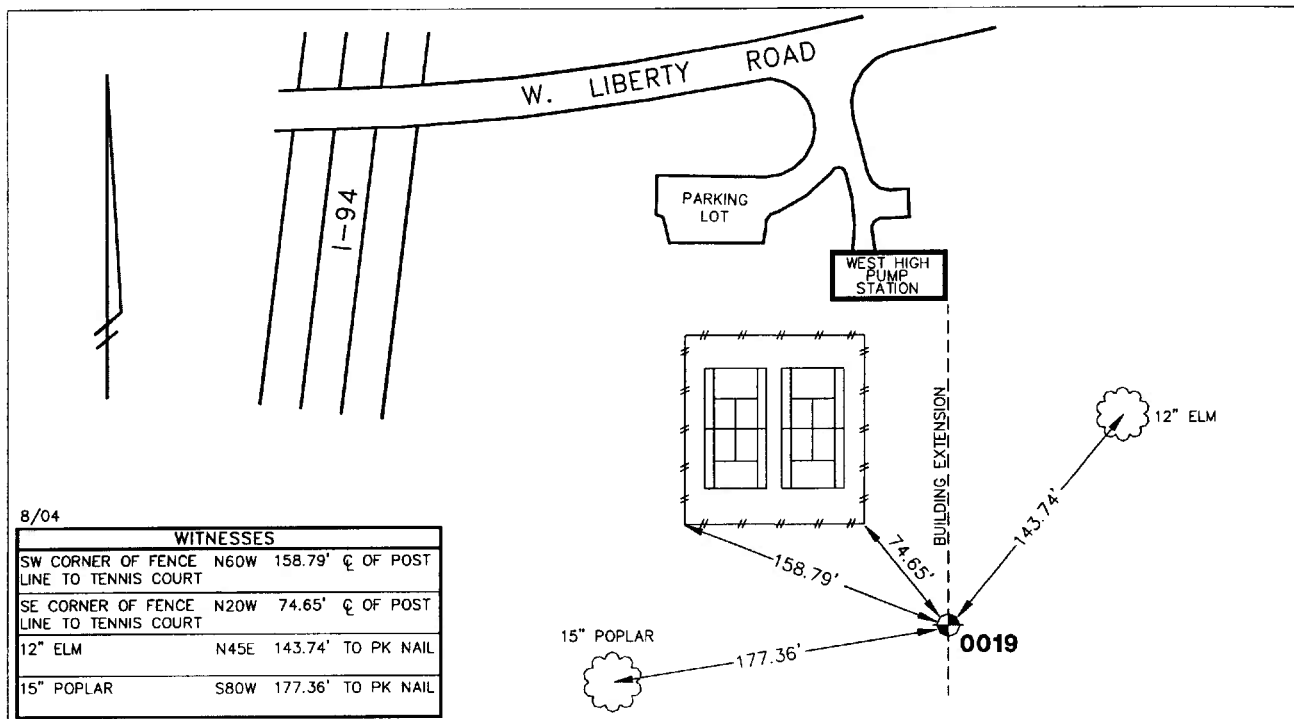


Public Services Area • Project Management Unit  
**CONTROL STATION DATA SHEET**

Approximate Location: W. Liberty Rd. at West High Pumping Station



8/04

WITNESSES	
SW CORNER OF FENCE	N60W 158.79' $\angle$ OF POST LINE TO TENNIS COURT
SE CORNER OF FENCE	N20W 74.65' $\angle$ OF POST LINE TO TENNIS COURT
12" ELM	N45E 143.74' TO PK NAIL
15" POPLAR	S80W 177.36' TO PK NAIL

STATION 0019 IS LOCATED SOUTH OF WEST LIBERTY ROAD, EAST OF I-94 AT THE WEST HIGH PUMP STATION, SAID STATION BEING IN THE SOUTHEAST 1/4 OF SECTION 25, SCIO TOWNSHIP IN THE CITY OF ANN ARBOR, MICHIGAN. THE STATION IS LOCATED 74.65' SOUTHEAST OF THE SOUTHEAST CORNER OF THE FENCE SURROUNDING THE TENNIS COURTS, 158.79' SOUTHEAST OF THE SOUTHWEST CORNER OF THE AFOREMENTIONED FENCE AND IS ON THE EASTERLY EXTENSION AND APPROXIMATELY 200' SOUTH OF THE WEST HIGH PUMP HOUSE. SAID STATION IS A PRIMARY CONTROL STATION AND IS DESCRIBED AS THE 1993 EDITION OF THE CITY OF ANN ARBOR BRASS DISC, SET IN CONCRETE PER DETAIL 1 AND IS FLUSH WITH THE GROUND. THIS STATION WAS SET BY THE CITY OF ANN ARBOR IN 1993.

Horizontal		Vertical	
Latitude (dms)	N 42 16 18.37479	Accuracy	2nd Order Class II
Longitude (dms)	W 83 46 58.97507	Datum	NAVD 88
State Plane Zone	2113 MI South	Elevation in meters	297.093
Scale	0.99996376	Elevation in International feet	974.71
Geoid Height in meters	-33.91		
Convergence (dms)	0 23 49.8		
Accuracy	1st Order		
Datum	NAD 83		
Easting (X) in meters	4048144.777		<b>No. 0019</b>
Northing (Y) in meters	85893.844		<b>Sector: WC</b>
Easting (X) in International feet	13281314.885		
Northing (Y) in International feet	281803.950		