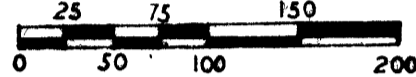
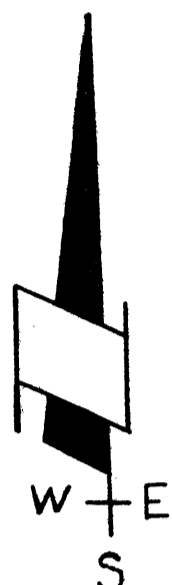
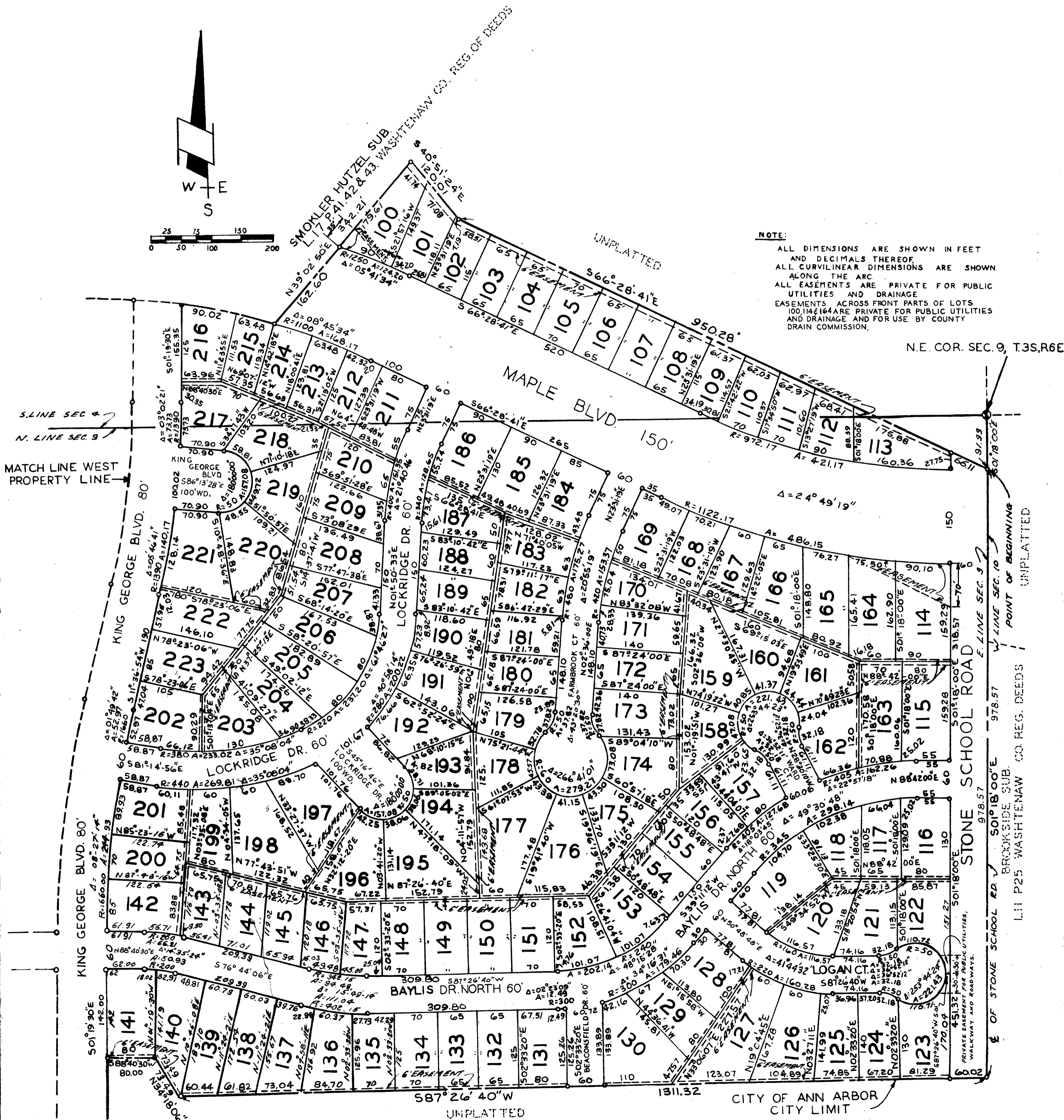


"SMOKLER HUTZEL SUB. NO. 2"

OF PART OF THE S. E. 1/4 OF SECTION 4 AND PART OF THE N. E. 1/4 OF SECTION 9, T. 3 S., R. 6 E., CITY OF ANN ARBOR, WASHTENAW COUNTY, MICHIGAN



NOTE:
ALL DIMENSIONS ARE SHOWN IN FEET AND DECIMALS THEREOF.
ALL CURVILINEAR DIMENSIONS ARE SHOWN ALONG THE ARC.
ALL EASEMENTS ARE PRIVATE FOR PUBLIC UTILITIES AND DRAINAGE EASEMENTS ACROSS FRONT PARTS OF LOTS 100, 114 & 164 ARE PRIVATE FOR PUBLIC UTILITIES AND DRAINAGE AND FOR USE BY COUNTY DRAIN COMMISSION.



"SMOKLER HUTZEL SUB. NO. 2"

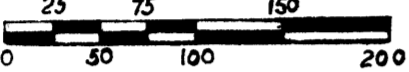
OF PART OF THE S.E. 1/4 OF SECTION 4 AND PART OF THE N.E. 1/4 OF SECTION 9, T.3 S., R.6 E., CITY OF ANN ARBOR, WASHTENAW COUNTY, MICHIGAN

NOTE:

ALL DIMENSIONS ARE SHOWN IN FEET AND DECIMALS THEREOF
ALL CURVILINEAR DIMENSIONS ARE SHOWN ALONG THE ARC
ALL EASEMENTS ARE PRIVATE FOR PUBLIC UTILITIES AND DRAINAGE

SMOKLER HUTZEL SUB. L 17 P 41.42 & 43 WASHTENAW CO. REG. OF DEEDS

R=1100.00
A= 691.57
A= 36° 01' 19"
CH= 680.24
CH. BRG. = N 86° 45' 06" E



R=1575.00
A= 431.42
A= 15° 41' 39"
CH= 430.07
CH. BRG. = N 76° 35' 16" E

UNPLATTED

OUTLOT F

OUTLOT G

MATCH LINE WEST PROPERTY LINE

R= 50.00
A= 101.07
A= 115° 49' 01"
CH. 84.72
CH. BRG. = N 59° 15' 31" W

R= 50.00
A= 22.55
A= 25° 50' 31"
CH. 22.36
CH. BRG. = S 75° 45' 14" W

PRIVATE EASEMENT FOR PUBLIC UTILITIES & WALKWAYS & ROADWAYS

KING GEORGE BLVD. 80'

UNPLATTED

R= 380.00
A= 596.90
A= 90° 00' 00"
CH. 537.40
CH. BRG. = S 43° 40' 30" W

"SMOKLER HUTZEL SUB. NO. 2"

OF PART OF THE S. E. 1/4 OF SECTION 4 AND PART OF THE N. E. 1/4 OF SECTION 9, T. 3 S., R. 6 E., CITY OF ANN ARBOR, WASHTENAW COUNTY, MICHIGAN

DEDICATION

KNOW ALL MEN BY THESE PRESENTS, that we, SYLVAN DEVELOPMENT COMPANY, INC., a Michigan corporation by Bert L. Smokler, President, and Arthur E. Knoff, Secretary, and EDWARD C. HUTZEL and MARGARET C. HUTZEL, his wife, and DONALD J. TICKNOR and MARY H. TICKNOR, his wife, and FRANCES W. TICKNOR, as proprietors, have caused the land embraced in the annexed plat to be surveyed, laid out and platted to be known as SMOKLER-HUTZEL SUBDIVISION NO: 2, of part of the S.E. 1/4 of Section 4 and part of the N.E. 1/4 of Section 9, T. 3 S., R. 6 E., City of Ann Arbor, Washtenaw County, Michigan, and the streets and alleys as shown on said plat are hereby dedicated to the use of the public, and that the easements indicated on said plat are not dedicated to the public but are reserved for public utilities, and any other use designated hereon, and no permanent structures are to be located within said easements. Signed and sealed in the presence of:

SYLVAN DEVELOPMENT COMPANY, INC.,
200 Northland Towers
Southfield, Michigan.

Priscilla E. Harper
Priscilla E. Harper (Witness)

Bert L. Smokler
Bert L. Smokler, President

Ruth A. Chesney
Ruth A. Chesney (Witness)

Arthur E. Knoff
Arthur E. Knoff, Secretary

Thaddeus A. Wozniak
THADDEUS A. WOZNIAK (Witness)

Edward C. Hutzal
Edward C. Hutzal
2525 PACKARD RD. ANN ARBOR, MICHIGAN

Richard E. Livesay
RICHARD E. LIVESAY (Witness)

Margaret C. Hutzal
Margaret C. Hutzal
2525 PACKARD RD. ANN ARBOR, MICHIGAN

John S. Blanchard
JOHN S. BLANCHARD (Witness)

Donald J. Ticknor
Donald J. Ticknor
2862 STONE SCHOOL RD. ANN ARBOR, MICHIGAN

Eugene F. Zeimet
EUGENE F. ZEIMET (Witness)

Mary H. Ticknor
Mary H. Ticknor
2862 STONE SCHOOL RD. ANN ARBOR, MICHIGAN

Joy L. Williams
JOY L. WILLIAMS (Witness)

Frances W. Ticknor
Frances W. Ticknor
2862 STONE SCHOOL RD. ANN ARBOR, MICHIGAN

Description of Land Platted

The land embraced in the annexed plat of Smokler-Hutzal Subdivision No. 2, of part of the S.E. 1/4 of Section 4 and part of the N.E. 1/4 of Section 9, T. 3 S., R. 6 E., City of Ann Arbor, Washtenaw County, Michigan is described as follows:

Beginning at a point on the East line of Section 9 distant S 01°18'00"E 91.99 ft. from the N.E. corner of Section 9, T. 3 S., R. 6 E., City of Ann Arbor, Washtenaw County, Michigan; thence continuing along said East line of Section 9, S 01°18'00"E 978.57 ft.; thence S 87°26'40"W 1311.32 ft.; thence N 34°18'06"W 73.49 ft.; thence S 88°40'30"W 80.00 ft.; thence S 01°19'30"E 144.04 ft.; thence along the arc of a curve to the right 596.90 ft., radius 380.00 ft., central angle 90°00'00", chord length 537.40 ft., chord bearing S 43°40'30"W; thence S 88°40'30"W 711.05 ft.; thence along the arc of a curve to the left 22.55 ft., radius 50.00 ft., central angle 25°50'31", chord length 22.36 ft., chord bearing S 75°45'14"W; thence along the arc of a curve to the right 101.07 ft., radius 50.00 ft., central angle 115°49'01", chord length 84.72 ft., chord bearing N 59°15'31"W; thence S 88°39'00"W 6.00 ft. to a point on the North and South 1/2 line of said Section 9; thence N 01°21'00"W 1416.14 ft along said North and South 1/2 line of Section 9; thence along the boundary of Smokler-Hutzal Subdivision as recorded in Liber 17 of Plats pages 41, 42 and 43, Washtenaw Co. Register of Deeds Office, the following four distances; along the arc of a curve to the left 431.42 ft., radius 1575.00 ft., central angle 15°41'39", chord length 430.07 ft., Chord bearing N 76°35'16"E; thence N 68°44'26"E 385.00 ft.; thence along the arc of a curve to the right 691.57 ft., radius 1100.00 ft., central angle 36°01'19", chord length 680.24 ft., chord bearing N 86°45'06"E; thence N 39°02'50"E 342.21 ft.; thence along unplatted land the following two distances; S 40°51'24"E 120.01 ft.; thence S 66°28'41"E 950.28 ft. to the point of beginning and containing 160 lots numbered 100 to 259 and two outlots lettered F and G.

SURVEYOR'S CERTIFICATE

I hereby certify that the plat hereon delineated is a correct one and that permanent metal monuments consisting of bars not less than one-half inch in diameter and 36 inches in length, or shorter bars of not less than one-half inch in diameter lapped over each other at least 6 inches with an overall length of not less than 36 inches encased in a concrete cylinder at least 4 inches in diameter and 36 inches in depth have been placed at points marked thus (O) as thereon shown at all angles in the boundaries of the land platted, at all the intersections of streets, intersections of alleys, or of streets and alleys, and at the intersections of streets and alleys with the boundaries of the plat as shown on said plat.

Prepared and Drafted by:

Eugene F. Zeimet
EUGENE F. ZEIMET
Registered Professional Engineer
Number 9209
200 Northland Towers
Southfield, Michigan

CERTIFICATION OF APPROVAL BY THE CITY PLANNING COMMISSION

The plat was approved by the Planning Commission of the City of Ann Arbor, Michigan, at a meeting held on the 12th day of May, 1966.

John G. Spielman, Jr.
John G. Spielman, Jr., Chairman
Keith F. Weiland
Keith F. Weiland, Secretary

CERTIFICATE OF MUNICIPAL APPROVAL

The plat was approved by the Common Council of the City of Ann Arbor at a meeting held May 2, 1966 and that the width of lots is in compliance with requirements of Section 30, Act 172, of 1929, as amended, and is in compliance with Section 19a.

John P. Bentley
John P. Bentley, Clerk

COUNTY TREASURER'S CERTIFICATE

Office of County Treasurer, Washtenaw County, I hereby certify that there are no tax liens of titles held by the State on the lands described hereon, and that there are no tax liens of titles held by individuals on said lands, for the five years preceding the 3 day of May, 1966 and that the taxes for said period of five years are paid, as shown by the records of this office. This certificate does not apply to taxes, if any, now in process of collection by Township, City or Village collecting officers.

Sylvester A. Leonard
Sylvester A. Leonard (County Treasurer)

COPY

Register's Office
Washtenaw County, } S. S.
Plat of Smokler Hutzal
Sub. No. 2
was Recorded this 1st day of July
A. D., 1966 at 11:40 clock
A.M., in Liber 18 of Plat
on Page 9, 10 & 11

I hereby certify this copy is a true copy of map or plat forwarded the Register of Deeds for recording
Date June 29, 1966
FILED IN DEPT. OF TREASURY
Date July 18, 1966
EXAMINED AND APPROVED
Date June 29, 1966
Allison Green
ALLISON GREEN
STATE TREASURER

Richard E. Lomax
Richard E. Lomax, Plat Examiner

ACKNOWLEDGMENT

STATE OF MICHIGAN)
) ss
COUNTY OF OAKLAND)

On this 20th day of JANUARY, 1966, before me, a Notary Public in and for said County, personally came the above named Bert L. Smokler and Arthur E. Knoff to me personally known, who being each by me duly sworn did say that they are the President and Secretary respectively of the SYLVAN DEVELOPMENT COMPANY, INC., a Michigan corporation, and that the seal affixed to said instrument is the corporation seal of said corporation and that the said instrument was signed and sealed in behalf of said corporation by authority of its Board of Directors; and the said officers acknowledged the said instrument to be the free act and deed of said corporation.

Mary M. Lemcke
Mary M. Lemcke, Notary Public, Oakland Co.

My Commission Expires: August 13, 1967

ACKNOWLEDGMENT

STATE OF MICHIGAN)
) ss
COUNTY OF OAKLAND)

On this 20th day of JANUARY, 1966, before me, a Notary Public in and for said County, personally came the above named Edward C. Hutzal and Margaret C. Hutzal, his wife, known to me to be the persons who executed the above dedication and acknowledged the same to be their free act and deed.

Mary M. Lemcke
MARY M. LEMCKE, Notary Public, OAKLAND Co.

My Commission Expires: AUGUST 13, 1967

APPROVAL OF COUNTY PLAT BOARD

This plat was approved on the 26 day of May, 1966 by the Washtenaw County Plat Board.

Patricia Newkirk Hardy
Patricia Newkirk Hardy (County Register of Deeds)
J. Martin Rempp
J. Martin Rempp (Auditor)
Herbert G. Loeffler
Herbert G. Loeffler (Auditor)
John P. Cook
John P. Cook (Auditor)
John H. Flook
John H. Flook (County Drain Commissioner)

ACKNOWLEDGMENT

STATE OF MICHIGAN)
) ss
COUNTY OF OAKLAND)

On this 20th day of JANUARY, 1966, before me, a Notary Public in and for said County, personally came the above named Donald J. Ticknor and Mary Ticknor husband and wife, and Frances W. Ticknor known to me to be the persons who executed the above dedication and acknowledged the same to be their free act and deed.

Mary M. Lemcke
MARY M. LEMCKE, Notary Public, OAKLAND Co.

MY COMMISSION EXPIRES: AUGUST 13, 1967