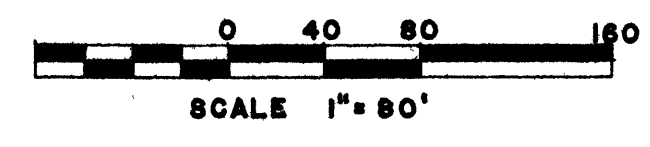


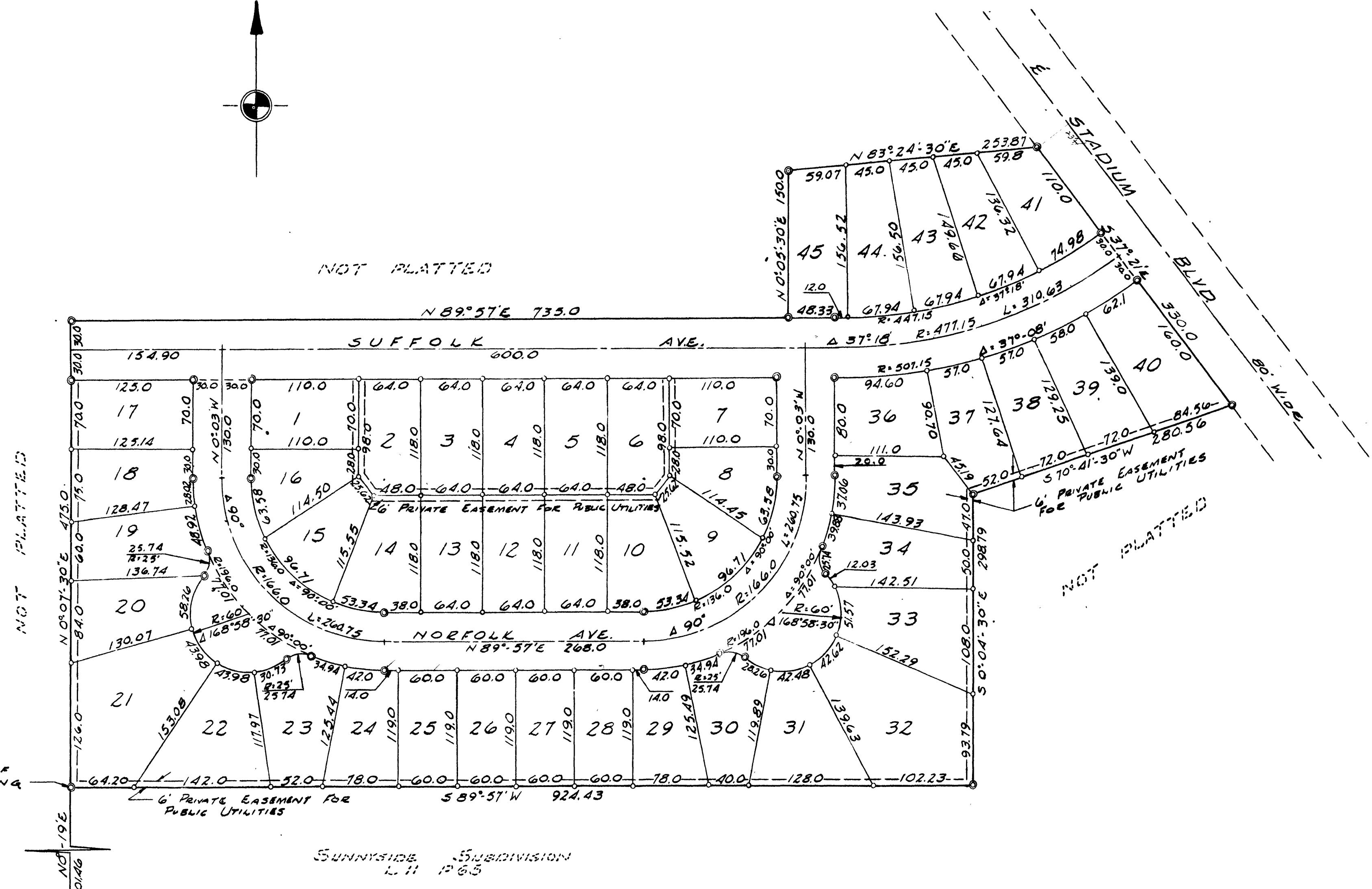
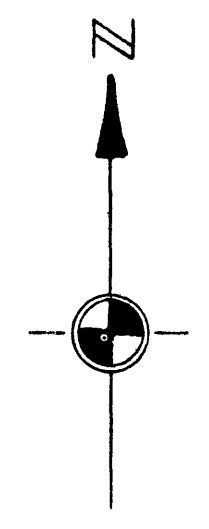
"DOUGLAS WOODS"

A SUBDIVISION OF PART OF THE SE 1/4 OF THE
NW 1/4 OF SECTION 31, T2S, R6E, CITY OF ANN
ARBOR, WASHTENAW COUNTY, MICHIGAN



ALL DIMENSIONS ARE IN FEET AND DECIMALS THEREOF
ALL CURVE DISTANCES ARE ARC LENGTHS
SURVEY BY ATWELL-HICKS INC.

1 OF 2
03/08/1956
ANN ARBOR, MICHIGAN
DOUGLAS WOODS
SUBDIVISION
L. 11 P. 65



W 1/4 COR. SEC. 31
T2S, R6E
N 89° 53' E 1466.76
E 1/4 LINE
60.146

SUNNYSIDE SUBDIVISION
L. 11 P. 65

DEDICATION

KNOW ALL MEN BY THESE PRESENTS, that we, Chester R. Stackhouse and Sophie M. Stackhouse, his wife, by F. C. Forsythe, Attorney-in-Fact and Commonwealth Construction Company, a Michigan corporation by Alan J. Grossman, President, and Benton B. Wolfe, Secretary, and Crosby Investment Co., a Michigan corporation by Lewis S. Grossman, President, and William J. Goodman, Secretary, as proprietors, have caused the land embraced in the annexed plat to be surveyed, laid out and platted to be known as "DOUGLAS WOODS" a Subdivision of part of the SE 1/4 of the NW 1/4 of Section 31, T 2 S, R 6 E, City of Ann Arbor, Washtenaw County, Michigan and that the streets and alleys as shown on said plat are hereby dedicated to the use of the public.

Signed and Sealed in the Presence of:

Mae M. Lascelle (Witness) MAE M. LASCELLE (Witness)

Chester R. Stackhouse, Sr. Chester R. Stackhouse

W. J. Butzin (Witness) W. J. BUTZIN (Witness)

Sophie M. Stackhouse Sophie M. Stackhouse by: F. C. Forsythe F. C. Forsythe, Att'y-in-Fact

Signed and Sealed in the Presence of:

Lorayne M. Cook (Witness) LORAYNE M. COOK (Witness)

COMMONWEALTH CONSTRUCTION COMPANY by:-

Alan J. Grossman Alan J. Grossman-President

Annette Stansell (Witness) ANNETTE STANSELL (Witness)

Benton B. Wolfe Benton B. Wolfe - Secretary

Signed and Sealed in the Presence of:

Velma Hamilton (Witness) VELMA HAMILTON (Witness)

CROSBY INVESTMENT CO., by:-

Lewis S. Grossman Lewis S. Grossman-President

Lennart Wende (Witness) LENNART WENDE (Witness)

William J. Goodman William J. Goodman-Secretary

ACKNOWLEDGMENT

STATE OF MICHIGAN) County of Washtenaw) ss.

On this 15th day of December, 1955, before me, a Notary Public in and for said County, personally came the above named F. C. Forsythe, Attorney-in-Fact for Chester R. Stackhouse and Sophie M. Stackhouse known to me to be the persons who executed the above dedication, and acknowledged the same to be their free act and deed.

Mae M. Lascelle Notary Public Washtenaw County

My Commission expires April 4, 1957

ACKNOWLEDGMENT

STATE OF MICHIGAN) County of Washtenaw) ss.

On this 14th day of December, 1955, before me, a Notary Public in and for said county appeared Alan J. Grossman and Benton B. Wolfe to me personally known, who being each by me duly sworn did say that they are the President and Secretary respectively of the Commonwealth Construction Company, a Michigan corporation, and that the seal affixed to said instrument is the corporate seal of said corporation and that said instrument was signed and sealed in behalf of said corporation by authority of its Board of Directors and the said Alan J. Grossman and Benton B. Wolfe acknowledged said instrument to be the free act and deed of said corporation.

Lorayne M. Cook Notary Public, Washtenaw County

My Commission expires 3/16/57

COPY Register's Office Washtenaw County Plat of Douglas Woods City of Ann Arbor was Recorded this 9th day of March A.D., 1956 at 11:35 O'clock A.M. in Liber 13 of Plat 28429 Patricia Newkirk Hardy C. Madge Lewis Notary Public

ACKNOWLEDGMENT

STATE OF MICHIGAN) County of Washtenaw) ss.

On this 14th day of December, 1955, before me, a Notary Public in and for said county appeared Lewis S. Grossman and William J. Goodman to me personally known, who being each by me duly sworn did say that they are the President and Secretary respectively of the Crosby Investment Co., a Michigan corporation, and that the seal affixed to said instrument is the corporate seal of said corporation and that said instrument was signed and sealed in behalf of said corporation by authority of its Board of Directors and the said Lewis S. Grossman and William J. Goodman acknowledged said instrument to be the free act and deed of said corporation.

Velma Hamilton Notary Public, Washtenaw County My Commission expires 10-7-58

DESCRIPTION OF LAND PLATTED

The land embraced in the annexed plat of "DOUGLAS WOODS" a Subdivision of part of the SE 1/4 of the NW 1/4 of Section 31, T 2 S, R 6 E, City of Ann Arbor, Washtenaw County, Michigan is described as follows:

COMMENCING at the W 1/4 corner of Section 31, T 2 S, R 6 E, Ann Arbor Township, Washtenaw County, Michigan; thence N 89° -53' E 1466.76 feet along the E & W 1/4 line of Section 31; thence N 0° -19' E 601.46 feet along the west line of Sunnyside Subdivision as recorded in Liber 11 of Plats on pages 65, 66, & 67, Washtenaw County Records for a PLACE OF BEGINNING; thence N 0° -07' -30" E 475.0 feet; thence N 89° -57' E 735.0 feet; thence N 0° -05' -30" E 150.0 feet; thence N 83° -24' -30" E 253.87 feet; thence S 37° -21' E 330.0 feet along the southwesterly line of Stadium Blvd.; thence S 70° -41' -30" W 280.56 feet; thence S 0° -04' -30" E 298.79 feet; thence S 89° -57' W 924.43 feet along the north line of said Sunnyside Subdivision to the place of beginning, containing 45 Lots numbered 1 through 45 inclusive.

"DOUGLAS WOODS"

A SUBDIVISION OF PART OF THE SE 1/4 OF THE NW 1/4 OF SECTION 31, T2S, R6E, CITY OF ANN ARBOR, WASHTENAW COUNTY, MICHIGAN SURVEY BY ATWELL-HICKS INC.

I hereby certify this copy is a true copy of map or plat forwarded the Register of Deeds for recording. Date March 6, 1956 Filed in Auditor General's Dept. Date March 15, 1956 Examined and approved Date March 6, 1956

Victoria Gersony Auditor General D. L. MacChargue Notary Public

SURVEYOR'S CERTIFICATE

I hereby certify that the plat hereon delineated is a correct one and that permanent metal monuments consisting of bars not less than one-half inch in diameter and 36 inches in length, or shorter bars of not less than one-half inch in diameter lapped over each other at least 6 inches with an over-all length of not less than 36 inches, encased in a concrete cylinder at least 4 inches in diameter and 36 inches in depth have been placed at points marked thus (C) as thereon shown at all angles in the boundaries of the land platted, at all the intersections of lines of streets, and at the intersections of lines of streets with the boundaries of the plat as shown on said plat.

Robert J. Jagow Registered Land Surveyor # 6998

MUNICIPAL APPROVAL

This plat was approved by the Common Council of the City of Ann Arbor at a meeting held January 6, 1956 Fred J. Looker (Clerk)

MUNICIPAL APPROVAL

This plat was approved by the Board of Public Works of the City of Ann Arbor at a meeting held February 8, 1956 Fred J. Looker (Clerk)

CITY CLERK'S CERTIFICATE

Office of City Clerk, City of Ann Arbor I hereby certify, that the width and depth of lots shown on this plat are in compliance with rules and regulation of the City of Ann Arbor and the requirements as to width and depth of Sec. 30 of Act 172, Public Acts of 1929 as amended by Act 186 Public Acts of 1954. Fred J. Looker (Clerk)

CERTIFICATE OF APPROVAL BY THE CITY PLANNING COMMISSION

This plat was approved by the Planning Commission of the City of Ann Arbor, Michigan, at a meeting held on the 19th day of January, 1956

John E. Swisher, Jr. (Chairman) Sybil K. Bennett (Secretary)

APPROVAL BY COUNTY PLAT BOARD

This plat was approved on the 9th day of February, 1956 by the Washtenaw County Plat Board

Patricia Newkirk Hardy (County Register of Deeds) J. Martin Rempp (Auditor) Adolph F. Gross (Auditor) Herbert G. Loeffler (Auditor)

COUNTY TREASURER'S CERTIFICATE

Office of County Treasurer, Washtenaw County I hereby certify, that there are no tax liens or titles held by the State on the lands described hereon, and that there are no tax liens or titles held by individuals on said lands, for the five years preceding the 27th day of December, 1955, and that the taxes for said period of five years are all paid, as shown by the records of this office. This certificate does not apply to taxes, if any, now in process of collection by township, city or village collecting officers. W. F. Verner (County Treasurer)

CERTIFICATE AS TO STATE TRUNK LINE OR FEDERAL AID ROADS

We hereby certify that said plat appears to include land located on a state trunk line or federal aid road. Patricia Newkirk Hardy (County Register of Deeds) J. Martin Rempp (Auditor) Adolph F. Gross (Auditor) Herbert G. Loeffler (Auditor)

ATTORNEY'S OPINION

I hereby certify from an examination of a plat of title to the lands described in this plat that I find no outstanding interest, including mineral rights, other than in the parties joining in the dedication.

Date: 12/19/55 Thomas H. Green (Attorney)

APPROVED Charles M. Bigler City Engineer STATE HIGHWAY COMMISSIONER

RECORDED 55-82-1884-23 2 OF 2