

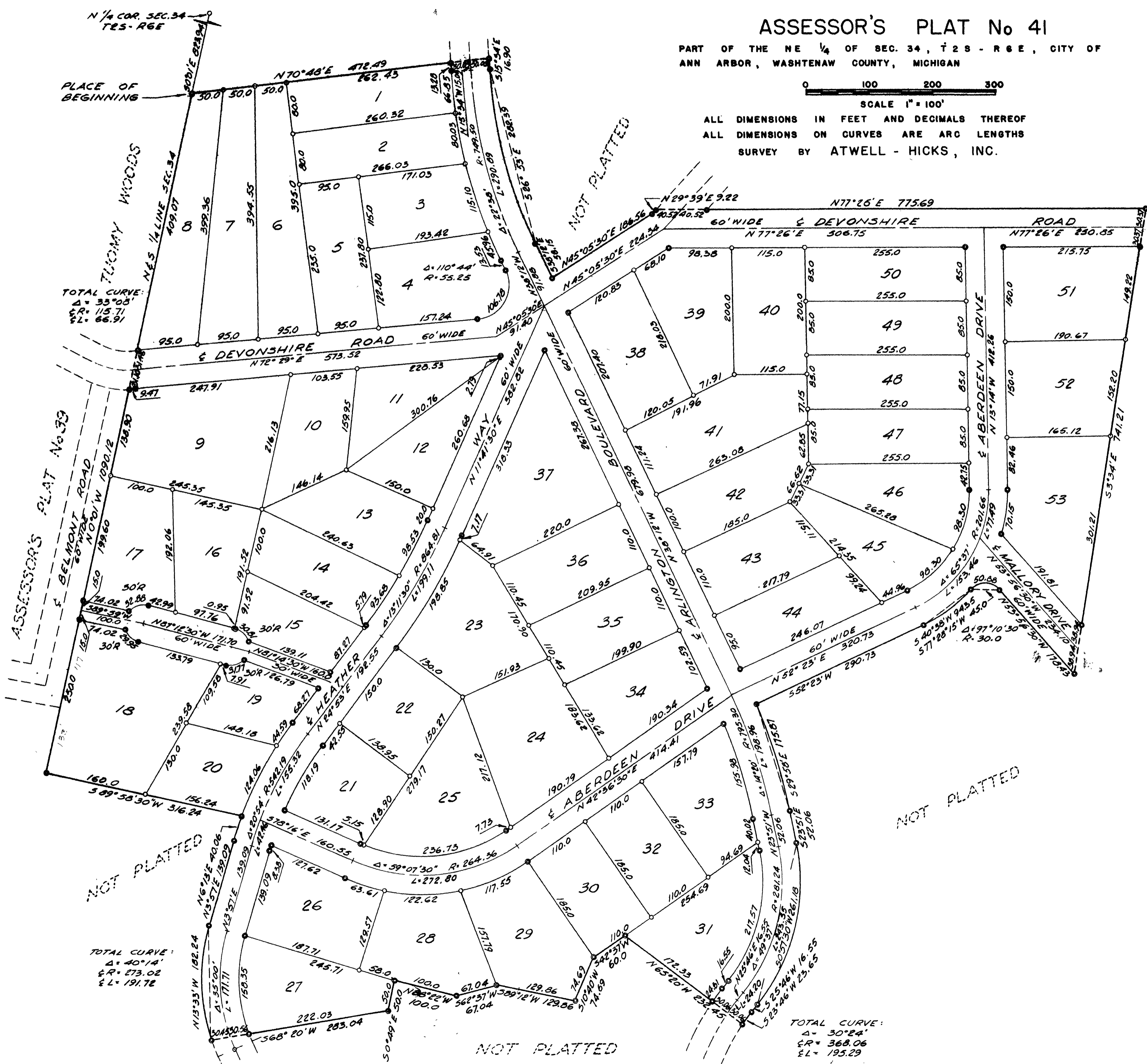
ASSESSOR'S PLAT No 41

PART OF THE NE 1/4 OF SEC. 34, T 2 S - R 6 E, CITY OF ANN ARBOR, WASHTENAW COUNTY, MICHIGAN



ALL DIMENSIONS IN FEET AND DECIMALS THEREOF
ALL DIMENSIONS ON CURVES ARE ARC LENGTHS
SURVEY BY ATWELL - HICKS, INC.

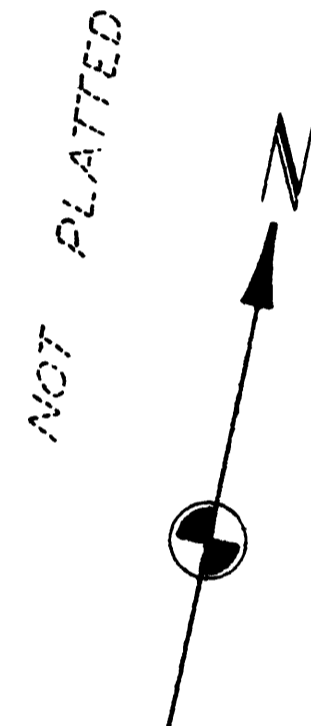
1 OF 2
ASSESSOR'S PLAT NO. 41
PAGE 15-46
06/26/1955



TOTAL CURVE:
Δ = 33°05'
CR = 115.71
CL = 66.91

TOTAL CURVE:
Δ = 40°14'
CR = 273.02
CL = 191.72

TOTAL CURVE:
Δ = 30°24'
CR = 368.06
CL = 195.29



APR 2 1955

APR 25 1955

ASSESSOR'S PLAT No 41

PART OF THE NE 1/4 OF SEC. 34, T 2 S - R 6 E, CITY OF ANN ARBOR, WASHTENAW COUNTY, MICHIGAN

Sheet 2 of 2



ALL DIMENSIONS IN FEET AND DECIMALS THEREOF
ALL DIMENSIONS ON CURVES ARE ARC LENGTHS
SURVEY BY ATWELL - HICKS, INC.

DEDICATION

KNOW ALL MEN BY THESE PRESENTS. That I, Curt H. Will, Assessor of the City of Ann Arbor of Washtenaw County, State of Michigan, by virtue of authority in me vested by Section 51, Act 172, of 1929, having been duly authorized by the City Council have caused the land described in the annexed plat to be surveyed, laid out and platted, to be known as ASSESSOR'S PLAT NO. 41 part of the NE 1/4 of Sec. 34 T 2 S - R 6 E, City of Ann Arbor, Washtenaw County, Michigan and that the road, boulevard, drives and way as shown on said plat are now being used for such purposes.

Johanna Vogel (Witness) *Curt H. Will*
Curt H. Will
Assessor of the City of Ann Arbor

ACKNOWLEDGMENT

STATE OF MICHIGAN)
) SS
County of Washtenaw)

On this 11 . . day of April A.D. 1955, before me, a Notary Public in and for said county, personally came the above named Curt H. Will, Assessor of the City of Ann Arbor, known to me to be the person who executed the above dedication, and acknowledged the same to be his free act and deed as such

Fred J. Looker
Fred J. Looker
Notary Public in and for Washtenaw County.
My Commission expires May 7, 1956

DESCRIPTION OF LAND PLATTED

The land embraced in the annexed plat of ASSESSOR'S PLAT NO. 41 part of the NE 1/4 of Sec. 34, T 2 S - R 6 E, City of Ann Arbor, Washtenaw County, Michigan is described as follows:

COMMENCING at the N 1/4 corner Section 34, T 2 S, R 6 E, City of Ann Arbor, Washtenaw County, Michigan; thence along the north and south 1/4 line of said Section 34 S 0°-01' E 823.94 feet for a PLACE OF BEGINNING; thence N 70°-48' E 472.49 feet; thence S 15°-34' E 16.90 feet; thence along the arc of a circular curve concave to the northeast of radius 719.50 feet subtended by a chord which bears S 26°-53' E 282.39 feet; thence S 38°-12' E 58.15 feet; thence N 45°-05'-30" E 186.56 feet; thence N 29°-39' E 9.22 feet; thence N 77°-26' E 775.69 feet; thence S 3°-34' E 741.21 feet; thence N 53°-56'-30" W 178.43 feet; thence along the arc of a circular curve concave to the south of radius 30.0 feet subtended by a chord which bears S 77°-28'-15" W 45.0 feet; thence along the arc of a circular curve concave to the northwest of radius 231.66 feet subtended by a chord which bears S 40°-38' W 94.35 feet; thence S 52°-23' W 290.73 feet; thence along the arc of a circular curve concave to the southwest of radius 825.30 feet subtended by a chord which bears S 29°-58' E 175.87 feet; thence S 23°-51' E 52.06 feet; thence along the arc of a circular curve concave to the west of radius 311.24 feet subtended by a chord which bears S 0°-57'-30" W 261.18 feet; thence S 25°-46' W 16.55 feet; thence along the arc of circular curve concave to the southeast of radius 338.06 feet subtended by a chord which bears S 23°-46' W 23.65 feet; thence N 65°-20' W 232.45 feet; thence S 42°-37' W 60.0 feet; thence S 10°-40' W 74.69 feet; thence S 89°-12' W 129.86 feet; thence S 62°-37' W 67.04 feet; thence N 88°-22' W 100.0 feet; thence S 0°-49' E 50.0 feet; thence S 68°-20' W 283.04 feet; thence along the arc of a circular curve concave to the east of radius 303.02 feet subtended by a chord which bears N 13°-33' W 182.24 feet; thence N 3°-57' E 139.09 feet; thence along the arc of a circular curve concave to the east of radius 572.19 feet subtended by a chord which bears N 6°-13' E 40.06 feet; thence S 89°-58'-30" W 316.24 feet; thence along the north and south 1/4 line of said Section 34 N 0°-01' W 1090.12 feet to the place of beginning, being part of the NE 1/4 of said Section 34 and containing 53 lots numbered from 1 to 53 inclusive.

SURVEYOR'S CERTIFICATE

I hereby certify that the plat hereon delineated is a correct one and that permanent metal monuments consisting of bars not less than one-half inch in diameter and 36 inches in length, or shorter bars of not less than one-half inch in diameter lapped over each other at least 6 inches with an over-all length of not less than 36 inches, encased in a concrete cylinder at least 4 inches in diameter and 36 inches in depth have been placed at points marked thus (⊙) as thereon shown at all angles in the boundaries of the land platted, at all the intersections of streets, intersections of alleys, or of streets and alleys, and at the intersections of streets and alleys with the boundaries of the plat as shown on said plat.

Herbert S. Hicks
Herbert S. Hicks
Registered Land Surveyor and
Professional Engineer # 1715

CERTIFICATE OF APPROVAL BY THE CITY PLANNING COMMISSION

This plat was approved by the Planning Commission of the City of Ann Arbor, Mich., at a meeting held on the day of APR 14 1955 1955

John E. Swisher, Jr.
John E. Swisher, Jr. (Chairman)
Sybil K. Bennett
Sybil K. Bennett (Secretary)

MUNICIPAL APPROVAL

This plat was approved by the Common Council of the City of Ann Arbor at a meeting held on the day of April 1955.

Fred J. Looker
Fred J. Looker (Clerk)

MUNICIPAL APPROVAL

This plat was approved by the Board of Public Works of the City of Ann Arbor at a meeting held on the day of April 1955.

Fred J. Looker
Fred J. Looker (Clerk)

APPROVAL BY COUNTY PLAT BOARD

This plat was approved on the 22nd day of April 1955 by the Washtenaw County Plat Board.

Patricia Newkirk Hardy
Patricia Newkirk Hardy (County Register of Deeds)
J. Martin Rempp
J. Martin Rempp (Auditor)
Adolph F. Gross
Adolph F. Gross (Auditor)
Herbert G. Loeffler
Herbert G. Loeffler (Auditor)

COPY

Register's Office
Washtenaw County,) ss.
Plat of Assessor's Plat No. 41
City of Ann Arbor
was Recorded this 24th day of
April A.D., 1955 at 8:30 o'clock
A.M. in Liber 12 of Plat 41
on Page 45 of 46
Patricia Newkirk Hardy
C. M. Newkirk, Jr. - dep.
Register of Deeds

I hereby certify this copy is a true copy of map of plat recorded in the office of the Register of Deeds.

Date: April 25, 1955
Filed in Auditor General's Dept.
Date: April 27, 1955
Examined and approved
Date: April 25, 1955

Violet Ferguson
Auditor General
Herbert S. Hicks
Plat Engineer