

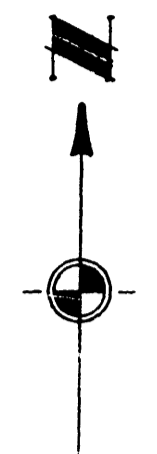
RECEIVED FOR RECORD
MAY 10 10 09 AM '53
FARRELLA NEWKIRK HARBOY
REGISTER OF DEEDS
WASHTENAW COUNTY, MICHIGAN
Liber 14 of Plate
on pages 54 and 55

ORIGINAL
ESKERMOOR

A SUBDIVISION OF PART OF THE SW 1/4 OF SECTION 36,
T2S, R6E, ANN ARBOR TOWNSHIP, WASHTENAW COUNTY, MICHIGAN



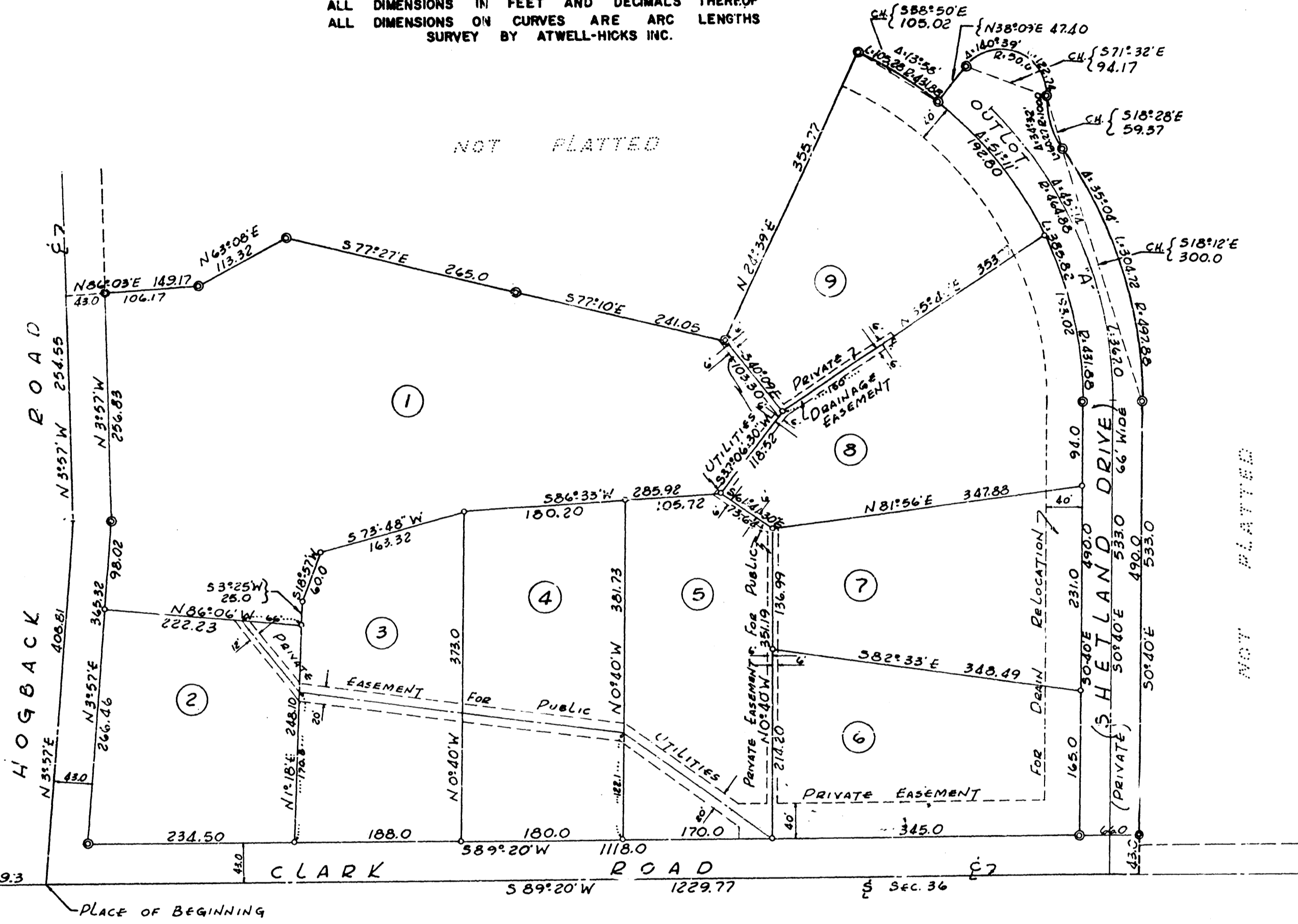
ALL DIMENSIONS IN FEET AND DECIMALS THEREOF
ALL DIMENSIONS ON CURVES ARE ARC LENGTHS
SURVEY BY ATWELL-HICKS INC.



1 OF 2
05/18/1959
POLLS001
ESKERMOOR SUB.
LIBER 14 PAGE 54-55

NOT PLATTED

NOT PLATTED



RECEIVED FOR RECORD
MAY 18 10 09 AM '53
FARRELLA NEWKIRK HARBOY
REGISTER OF DEEDS
WASHTENAW COUNTY, MICHIGAN
Liber 14 of Plate
on pages 54 and 55

SW CORNER SEC. 36
T2S, R6E
N89°20'E 449.3
1/2 Sec. 36

PLACE OF BEGINNING

NOT PLATTED

ORIGINAL

ESKERMOOR

A SUBDIVISION OF PART OF THE SW 1/4 OF SECTION 36, T2S, R6E, ANN ARBOR TOWNSHIP, WASHTENAW COUNTY, MICHIGAN



ALL DIMENSIONS IN FEET AND DECIMALS THEREOF
ALL DIMENSIONS ON CURVES ARE ARC LENGTHS
SURVEY BY ATWELL-HICKS INC.

RECEIVED
FOR RECORD
MAY 11 1959
COUNTY CLERK
WASHTENAW COUNTY
ANN ARBOR, MICHIGAN

EXAMINED AND APPROVED

Date May 11, 1959

Frank S. Szymanski
Frank S. Szymanski
AUDITOR GENERAL

By D. J. MacFarland
D. J. MacFarland
Plat Engineer

DEDICATION

KNOW ALL MEN BY THESE PRESENTS, that we, Frank H. Smith and Dorothy L. Smith, his wife, Nell B. Lindley, a widow, Frank F. Hooper and Grace C. Hooper, his wife, Robert H. Hoisington and Mary Fay Hoisington, his wife and Samuel K. Clark and Mary B. Clark, his wife, as proprietors, have caused the land embraced in the annexed plat to be surveyed, laid out and platted to be known as ESKERMOOR a subdivision of part of the SW 1/4 of Section 36, T 2 S, R 6 E, Ann Arbor Township, Washtenaw County, Michigan, and that the Roads as shown on said plat are hereby dedicated to the use of the public and that Shetland Drive (Outlot "A") as shown on said plat is reserved as a private drive for the use of the lot owners of Esker Moor only.

Paul L. Proud, Jr.
Paul L. Proud, (Witness)

Frank H. Smith
Frank H. Smith

Dorothy L. Smith
Dorothy L. Smith

Nell B. Lindley
Nell B. Lindley

Grace C. Hooper
Grace C. Hooper

Robert H. Hoisington
Robert H. Hoisington

Mary Fay Hoisington
Mary Fay Hoisington

Samuel K. Clark
Samuel K. Clark

Mary B. Clark
Mary B. Clark

DESCRIPTION OF LAND PLATTED

The land embraced in the annexed plat of ESKERMOOR a subdivision of part of the SW 1/4 of Section 36, T 2 S, R 6 E, Ann Arbor Township, Washtenaw County, Michigan is described as follows:

Commencing at the SW corner of Section 36, T 2 S, R 6 E, Ann Arbor Township, Washtenaw County, Michigan; thence along the south line of said section N 89°-20' E 449.3 feet for a PLACE OF BEGINNING; thence N 3°-57' E 408.81 feet; thence N 3°-57' W 254.55 feet; thence N 86°-03' E 149.17 feet; thence N 63°-08' E 113.32 feet; thence S 77°-27' E 265.0 feet; thence S 77°-10' E 241.05 feet; thence N 24°-39' E 355.77 feet; thence southeasterly 105.28 feet in the arc of a circular curve concave to the southwest, radius 431.88 feet, chord S 58°-50' E 105.02 feet; thence N 38°-09' E 47.40 feet; thence easterly 122.74 feet in the arc of a circular curve concave to the south, radius 50.0 feet, chord S 71°-32' E 94.17 feet; thence southerly 60.27 feet in the arc of a circular curve concave to the east, radius 100.0 feet, chord S 18°-28' E 59.37 feet; thence southerly 304.72 feet in the arc of a circular curve concave to the west, radius 497.88 feet, chord S 18°-12' E 300.0 feet; thence S 0°-40' E 533.0 feet to the south line of said Section 36; thence along said south line S 89°-20' W 1229.77 feet to the place of beginning, containing 9 lots numbered 1 through 9 inclusive and one outlot lettered A.

APPROVAL BY COUNTY PLANNING COMMISSION

This plat was approved by the Washtenaw County Planning Commission at a meeting held on the 15th day of April, 1959.

William G. Hayes
William G. Hayes, Chairman

John W. Hyde
John W. Hyde, Member

APPROVAL BY BOARD OF COUNTY ROAD COMMISSIONERS

This plat has been examined and was approved on the 11th day of May, 1959, by the Washtenaw County Board of Road Commissioners.

Raymond L. Koch
Raymond L. Koch, Chairman

C. O. McLaughlin
C. O. McLaughlin, Member

H. L. Frisinger
H. L. Frisinger, Member

CERTIFICATE OF MUNICIPAL APPROVAL

This plat was approved by the Township Board of the Township of Ann Arbor at a meeting held on the 11th day of May, 1959, and that the width of lots is in compliance with requirements of Section 30, Act 172, of 1929, as amended.

Ray W. Weger
Ray Weger, Clerk

COUNTY TREASURER'S CERTIFICATE
Office of County Treasurer, Washtenaw County

I hereby certify, that there are no tax liens or titles held by the State on the lands described hereon, and that there are no tax liens or titles held by individuals on said lands for the five years preceding the 11th day of May, 1959, and that the taxes for said period of five years are all paid, as shown by the records of this office. This certificate does not apply to taxes, if any, now in process of collection by township, city or village collecting officers.

W. F. Verner
W. F. Verner, County Treasurer

APPROVAL BY COUNTY PLAT BOARD

This plat was approved on the 14th day of May, 1959, by the Washtenaw County Plat Board.

Patricia Newkirk Hardy
Patricia Newkirk Hardy
County Register of Deeds

C. C. Chandler
C. C. Chandler
Auditor

J. Martin Rempp
J. Martin Rempp
Auditor

Herbert G. Loeffler
Herbert G. Loeffler
Auditor

ACKNOWLEDGMENT

STATE OF MICHIGAN)
County of Washtenaw) ss.

On this 11th day of May, 1959, before me, a Notary Public in and for said County, personally came the above named Frank H. Smith and Dorothy L. Smith, his wife, Nell B. Lindley, a widow, Frank F. Hooper and Grace C. Hooper, his wife, Robert H. Hoisington and Mary Fay Hoisington, his wife, and Samuel K. Clark and Mary B. Clark, his wife, known to me to be the persons who executed the above dedication, and acknowledged the same to be their free act and deed.

Paul L. Proud, Jr.
Paul L. Proud, Jr.
Notary Public, Washtenaw County

My Commission expires July 9, 1960

SURVEYOR'S CERTIFICATE

I hereby certify that the plat hereon delineated is a correct one and that permanent metal monuments consisting of bars not less than one-half inch in diameter and 36 inches in length, or shorter bars of not less than one-half inch in diameter lapped over each other at least 6 inches with an over-all length of not less than 36 inches, encased in a concrete cylinder at least 4 inches in diameter and 36 inches in depth have been placed at points marked thus (O) as the same shown at all angles in the boundaries of the land platted, at all the intersections of lines of streets, and at the intersections of lines of streets with the boundaries of the plat as shown on said plat.

Robert S. Jagow
Robert S. Jagow
Registered Land Surveyor # 6998



RECEIVED
FOR RECORD
MAY 18 1959 AM 10:00
COUNTY CLERK
WASHTENAW COUNTY
ANN ARBOR, MICHIGAN

SHEET 2 OF 2

Files 14 of Plate Page 55