

# Welcome!

*The Meeting Will Begin Soon.*

## Zoom Technology Overview – Things to Know

---

- Attendee video cameras are disabled (we can't see you)
- Attendee screen share is disabled
- All attendees are muted (instructions to unmute will be covered)
- You can leave and rejoin the meeting at any time
- Multiple opportunities for questions will be provided throughout the presentation
- Presentation and additional materials are available:  
[a2gov.org/TCFernwood](https://a2gov.org/TCFernwood)

# Welcome!

Traffic Calming Program Meeting #2

Fernwood Avenue (Lorraine – Packard )

# Project Team



Andrea Wright

Project Facilitator

Program Facilitation/Public Engagement



Cyrus Naheedy

Project Manager

Transportation Engineer



Eli Cooper

Project Support

Transportation Planner

# City Support Staff



Kayla Coleman

Questions and Answers Manger  
Public Engagement Specialist



Cynthia Redinger

Traffic Calming Program Manger  
Transportation Engineer



Anne Watza

Capturing Public Comment  
Engineering Intern

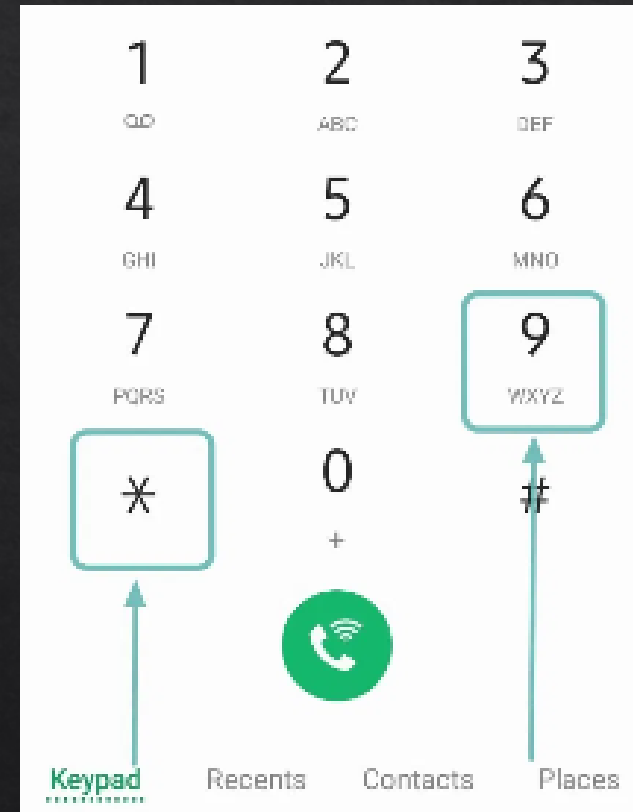
# Agenda

- Zoom Technology Overview & Meeting Norms (5 mins)
- Fernwood Traffic Calming Overview (5 mins)
- Device Discussion (60 Mins):
  - Device 1: Review, Questions, Feedback
  - Device 2: Review, Questions, Feedback
  - Device 3: Review, Questions, Feedback
  - Device 4: Review, Questions, Feedback
  - Device 5: Review, Questions, Feedback
- Tentative Next Steps (5 min)


# Zoom Technology Overview – Phone


Select \*9 to raise your hand

- The host will enable your microphone
- The host will lower your hand when your question has been addressed



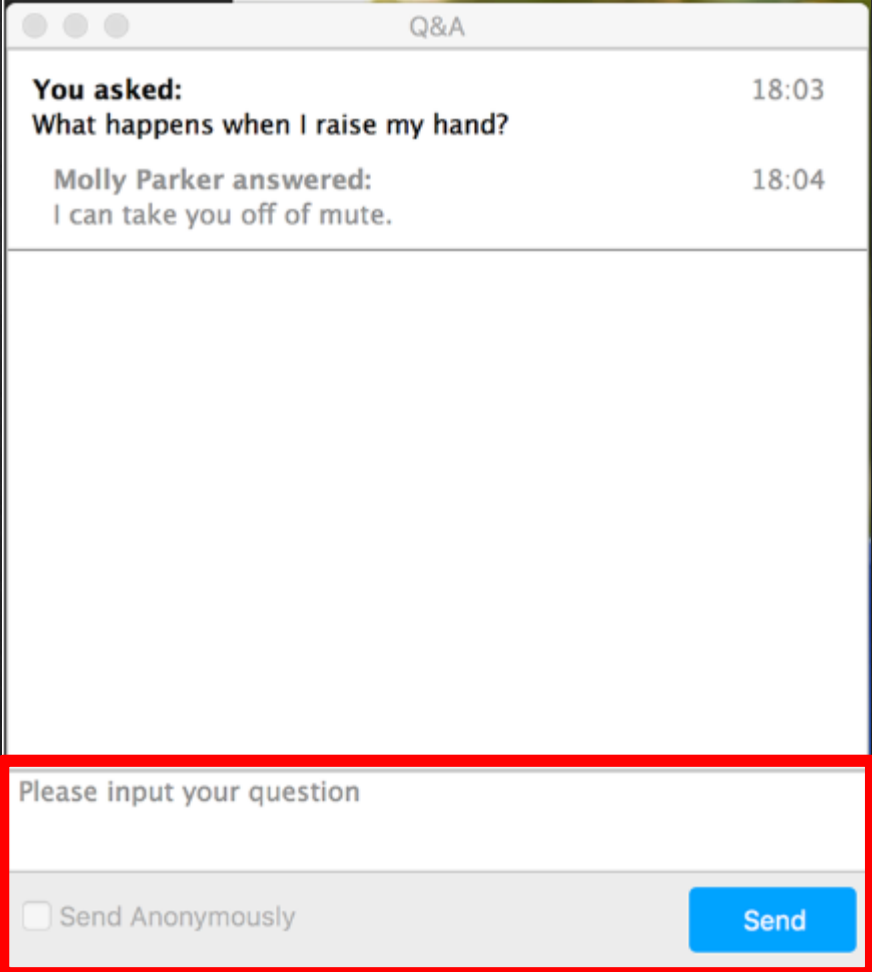
# Zoom Technology Overview – Computer

Raising Hand: select **Raise Hand**  in the Webinar Controls

- The host will be notified that you've raised your hand
- Select **Lower Hand**  to lower if needed

Q&A: select **Q&A** in the Webinar Controls

- Type your question and click **Send**
- Check the **Send Anonymously** box if you do not want your name attached to your question in the Q&A



The screenshot shows a Zoom Q&A window with the following content:

Q&A	
<b>You asked:</b>	18:03
What happens when I raise my hand?	
<b>Molly Parker answered:</b>	18:04
I can take you off of mute.	

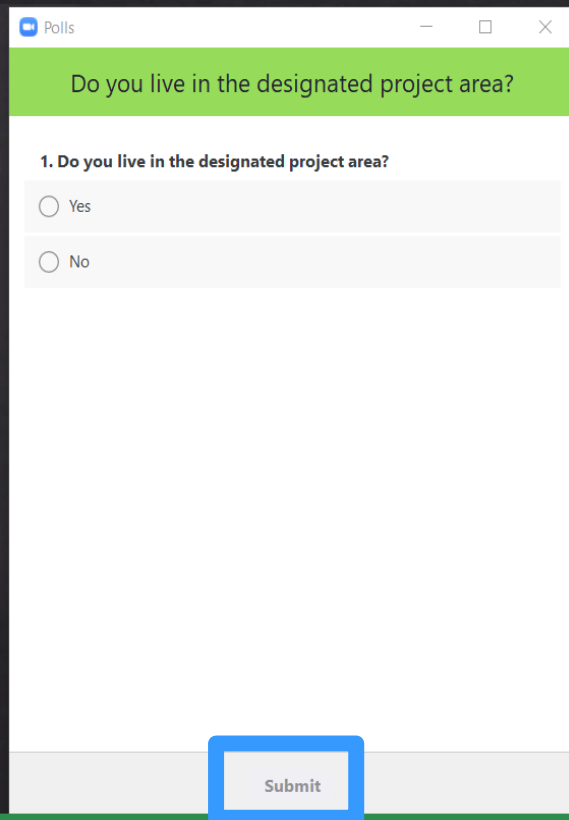
Below the Q&A history is a text input field with the placeholder text "Please input your question". At the bottom of the input area, there is a checkbox labeled "Send Anonymously" and a blue "Send" button.

# Zoom Technology Overview – Polling

## Computer

When the host activates the poll:

- Click your answer
- Press submit (blue box)



Do you live in the designated project area?

1. Do you live in the designated project area?

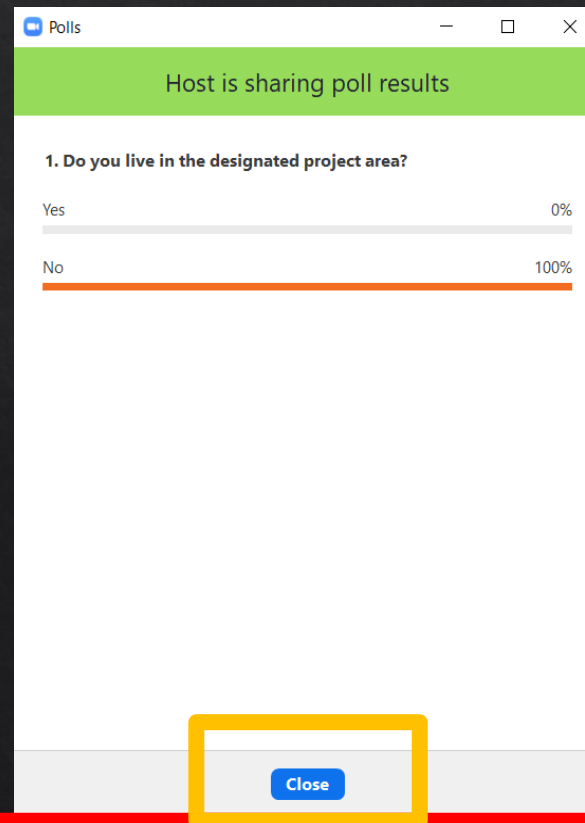
Yes

No

Submit

Once the poll closes, the host will share the results with meeting attendees

- To close simply press the close button (orange box)



Host is sharing poll results

1. Do you live in the designated project area?

Yes	0%
No	100%

Close

## Phone

- Phones have limited features for answering polls
- To answer a poll on a phone:
  - Raise your hand (\*9)
  - The host will unmute you
  - Say your answer to the poll

**Note:** when answering a poll on your phone, everyone in the webinar will be able to hear your answer.





Polling

# Meeting Norms

- Start on time . . . end on time.
- Raise your hand to be recognized to talk; there will be one speaker at a time
- Move to a quiet area and silence any background sounds when speaking
- Speak loud and clear so everyone can hear
- Everyone will be provided a chance to speak before a repeat speaker
- Be respectful of other ideas and perspectives – no finger pointing!
- Try to distinguish between I know (facts) and I think (opinions).
- Inappropriate written and/or verbal comment or language, including personal attacks and accusations, will result in the attendee being removed from the meeting.

Is anything missing?

# Fernwood Traffic Calming Overview

**Step 1:** Petition received Oct. 8, 2018

**Resident-Initiated Petition**



Define project limits and establish community buy-in early

**Step 2:** 50% approval response received on Dec. 20, 2019

**Initial Questionnaire**



Collect feedback about existing conditions

**Step 3:** Meeting held on Mar. 5, 2020

**Meeting #1 Orientation/Workshop**



Advance understanding of programs and options while gathering additional feedback

**Step 4:** Current Step June 4, 2020

**Meeting #2 Onsite/Walking**



Visualize draft plan on-site

**Step 5:** Mail late June 2020

**Final Polling**



Determine project area response to proposed plan

# Device Discussion

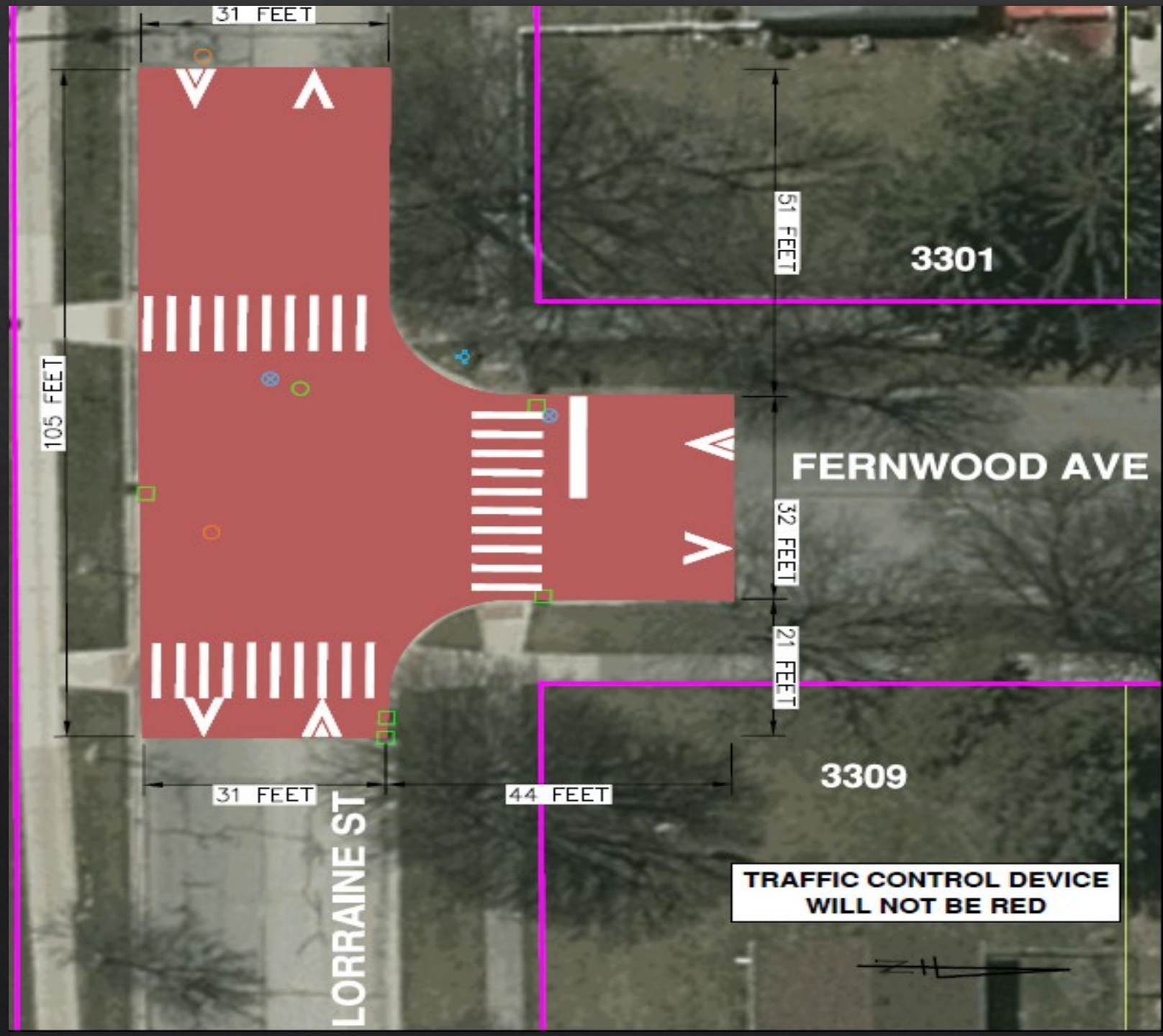
# Device #1: Raised Intersection

## Dimensions:

- Max length = 44 feet
- Max width = 105 feet
- Max height = 3 inches

## Device considerations:

- Improves pedestrian visibility
- Reinforces slower speeds
- Requires utility work (additional construction to raise 4 manholes)
- Emergency response may be delayed 2 to 10 seconds per device



# Raised Intersection Example: Green Rd and Fox Hunt Dr Intersection





Questions



Polling



# Device #2: Speed Table

## Dimensions:

- Max length = 22 feet
- Max width = 32 feet
- Max height = 3 inches

## Device considerations include:

- 12 % average traffic volume reduction
- Reinforces slower speeds
- Requires utility work (additional construction to raise 1 manhole)
- Emergency response may be delayed 2 to 10 seconds per device



## Speed Table Example:

### Scio Church Service Drive (7<sup>th</sup> to Chaucer) – Raised Crosswalk

Note: Speed Table will not have crosswalk markings.





Questions



Polling

# Device #3: Speed Table

## Dimensions:

- Max length = 22 feet
- Max width = 32 feet
- Max height = 3 inches

## Device considerations include:

- 12 % average traffic volume reduction
- Reinforces slower speeds
- Emergency response may be delayed 2 to 10 seconds per device



Speed Table Example:  
S. Forest Ave – Raised  
Crosswalk

Note: Speed Table will not have crosswalk markings.





Questions



Polling



# Device #4: Speed Table

## Dimensions:

- Max length = 22 feet
- Max width = 32 feet
- Max height = 3 inches

## Device considerations include:

- 12 % average traffic volume reduction
- Reinforces slower speeds
- Emergency response may be delayed 2 to 10 seconds per device



Speed Table Example:

Scio Church Service Drive (7<sup>th</sup> to Chaucer)

Note: Speed Table will not have crosswalk markings.





Questions



Polling

# Device #5: Median Island

## Dimensions:

- Max length = 20 feet
- Max width = 8 feet
- Max height = 4.5 inches

## Device considerations include:

- Reinforces slower speeds
- Removes two adjacent parking spots



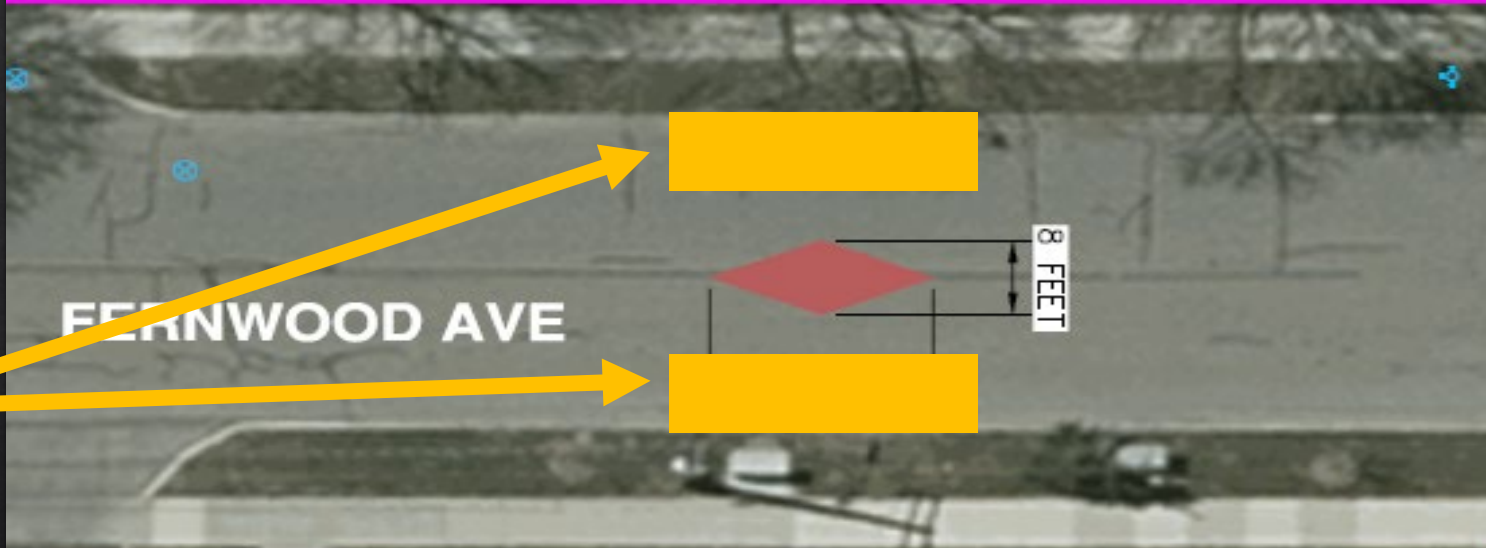
# Device #5: Median Island

## Dimensions:

- Max length = 20 feet
- Max width = 8 feet
- Max height = 4.5 inches

## Device considerations include:

- Reinforces slower speeds
- Removes two adjacent parking spots



# Median Island Example: Easy Street



# Median Island Example: Qwick Kurb Sign



<http://www.qwickkurb.com/bullnose-base/>





Questions



Polling

# Tentative Next Steps

**LATE JUNE**

MAIL AND POST  
ELECTRONICALLY FINAL  
POLLING

**MID JULY**

FINAL POLL REQUIRED  
TO BE POSTMARKED OR  
SUBMITTED  
ELECTRICALLY

**EARLY AUGUST**

CLERKS OFFICE TALLIES  
RESULTS

**AUGUST**

TRANSPORTATION  
COMMISSION

**SEPTEMBER**

CITY COUNCIL

**TBD**

CONSTRUCTION



Questions

# Contact Information

Phone: 734-794-6429

Email: [TrafficCalming@a2gov.org](mailto:TrafficCalming@a2gov.org)

Project Website: [a2gov.org/TCFernwood](http://a2gov.org/TCFernwood)