

I hereby certify that the plat hereon delineated is a correct one and that permanent metal monuments of not less than one inch in diameter and fifteen inches in length set in a concrete base at least four inches in diameter and forty-eight inches in depth have been placed at the points marked thereon as shown in the plat at all angles in the boundaries of the land platted, at all the intersections of streets, intersections of alleys or of streets and alleys and at the intersections of streets and alleys with the boundaries of the plat as shown on said plat.

J. V. A. Steele
Registered Civil Engineer

CERTIFICATE OF MUNICIPAL APPROVAL

This plat was approved by the Common Council of the City of Ann Arbor, Washtenaw County, Michigan at a meeting held.....

James S. Quinn
Clerk

This plat was approved by the Board of Public Works, of the City of Ann Arbor, Washtenaw County, Michigan at a meeting held.....

James S. Quinn
Clerk

CERTIFICATE OF APPROVAL

BY BOARD OF COUNTY AUDITORS
Approved by the Board of County Auditors of Washtenaw County, Michigan this..... day of..... 1928

John S. Cummings
Chairman

Shelby M. Stewart
.....

Watkinson

Director's Plat No. 11

Aug 28 1928
John S. Cummings

Aug 18-1928
Geo R. Hauer

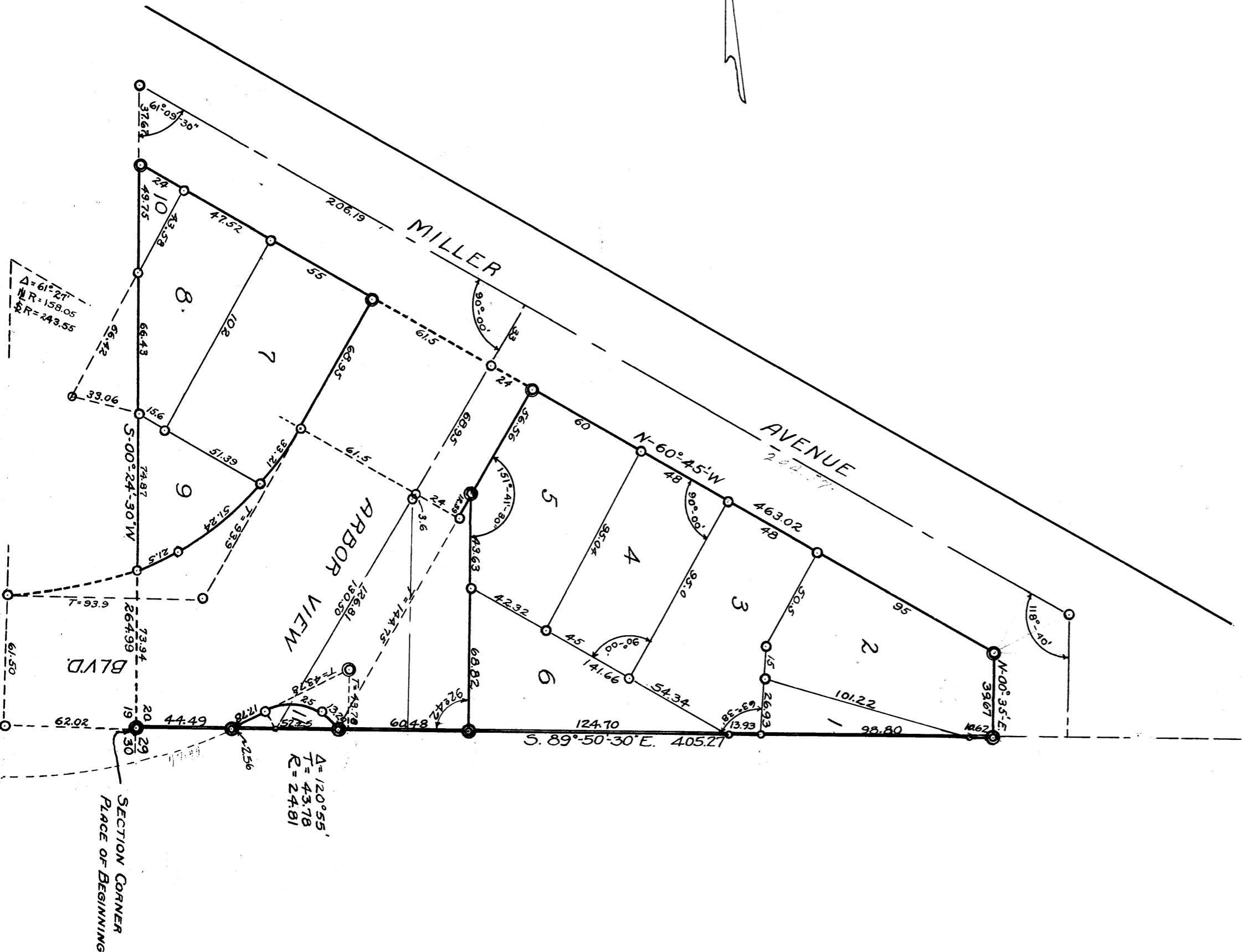
Aug 22-1928
Geo R. Hauer

ASSESSORS PLAT NO. 11.

OF A PART OF THE SW 1/4 OF SECTION 20,
T. 2 S., R. 6 E.,
IN THE
CITY OF ANN ARBOR,
WASHTENAW COUNTY, MICH.

Commencing at the section corner which is common to sections 19, 20, 29, and 30, Ann Arbor Township, Washtenaw County, Michigan; thence S. 89° 0' - 50" - 30" E. along the north line of Section 29, 495.27 feet to an iron pipe in the westerly line of Seventh Street; thence N. 00° - 35' E., along the westerly line of Seventh Street 39.67 feet to an iron pipe monument at the intersection of the westerly line of Seventh Street with the southwesterly line of Miller Avenue; thence N. 60° - 45' E. along the southwesterly line of Miller Avenue 453.02 feet to an iron pipe monument in the west line of Section 20 thence S. 00° - 24' - 30" W. along the west line of Section 20, 284.99 feet to the place of beginning, being a part of the south-west quarter Section 20, T. 2, S., R. 6, E., Washtenaw County, Michigan.

Scale 1"=50'



DEDICATION

KNOW ALL MEN BY THESE PRESENTS That I, Herbert W. Crippen, Assessor of the City of Ann Arbor, Washtenaw County, Michigan by virtue of authority in me vested by Section 3350 Compiled Laws of 1915 as amended, having been duly authorized by the Common Council of the City of Ann Arbor, Washtenaw County, Michigan, have caused the land described in the annexed plat to be surveyed, laid out, and platted to be known as "ASSESSOR'S PLAT NO. 11" of the City of Ann Arbor, Washtenaw County, Michigan.

A part of the Southwest quarter of Section 20, T. 2 S., R. 6 E., Washtenaw County, Michigan, and that the streets and alleys as shown on said plat are hereby dedicated to the use of the Public.

Herbert W. Crippen
Assessor of the City of Ann Arbor
Washtenaw County, Michigan.

ACKNOWLEDGMENT

STATE OF MICHIGAN
COUNTY OF WASHTENAW
On this..... day of..... A.D. 1928..... before me, a Notary Public, in and for said county, personally came the above named Herbert W. Crippen, Assessor of the City of Ann Arbor, Washtenaw County, Michigan, known to me to be the person who executed the above dedication, and upon being asked the same to be his free act and deed as such Assessor.....
Notary Public in and for Washtenaw County, Mich.
My Commission expires.....

Aug 18-1928
Geo R. Hauer

#136