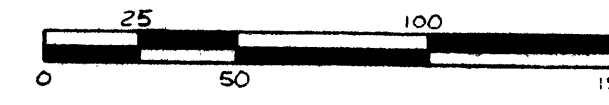


ASSESSOR'S PLAT No 54

PART OF THE NORTH 1/2
SECTION 4, T.3 S., R.6 E.,
CITY OF ANN ARBOR
WASHTENAW CO., MICHIGAN.

PREPARED BY AMERICAN ENGINEERING CO.
CIVIL ENGINEERS & SURVEYORS
206 S. MAIN, ANN ARBOR, MICH.



SCALE: 1" = 50'

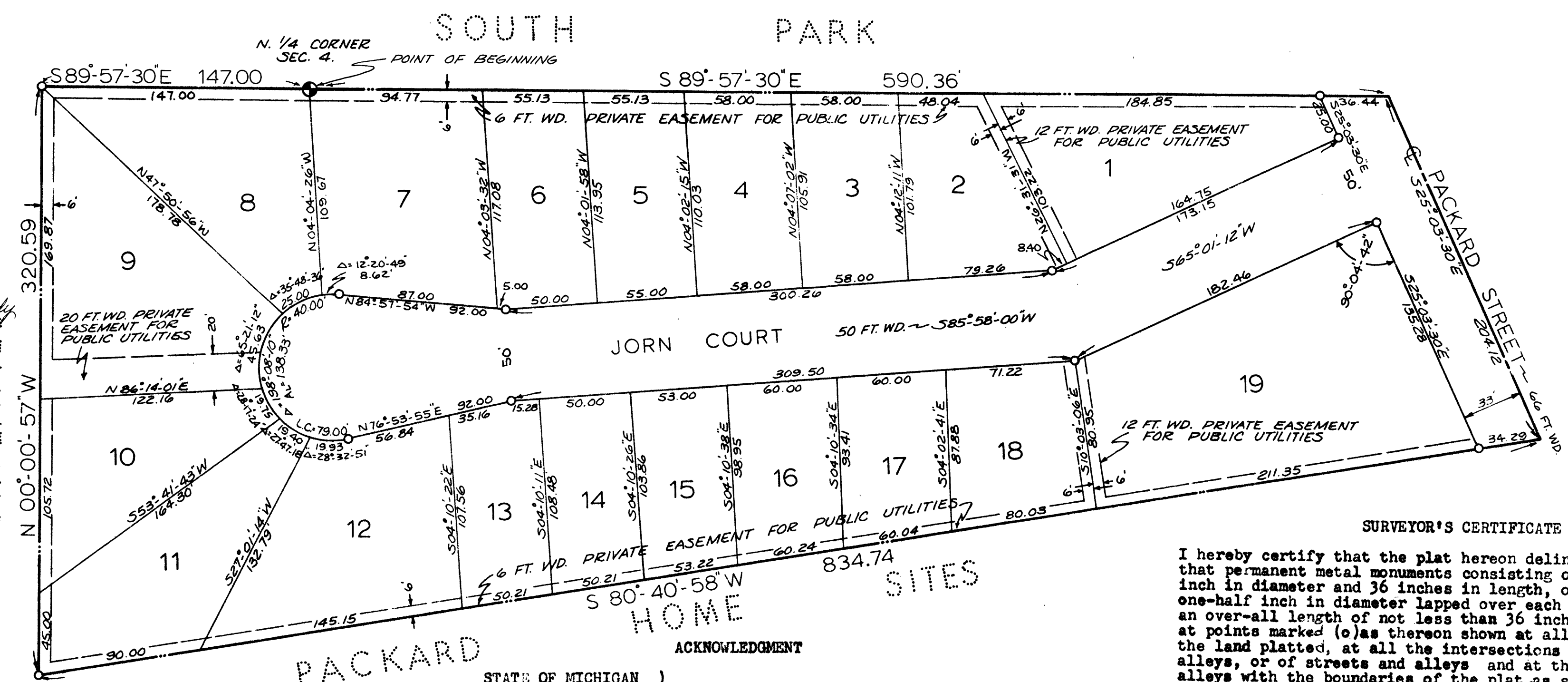
ALL DISTANCES ARE SHOWN IN FEET AND DECIMALS THEREOF. ALL CURVE DIMENSIONS ARE ARC LENGTHS.

1 OF 1
04/25/1966
ASSESSOR'S PLAT NO. 54
PAGE 13

COPY
Register's Office
Washtenaw County, S.S.
Plat of Assessor's Plat
No. 54
was Recorded this 25th day of
April, A. D., 1966 at 12:00 o'clock
P.M. in Liber. 18 of Plats
on Page 3
Patricia Newkirk Hardy
Register of Deeds
Richard E. Loney
Notary Public

I hereby certify this copy is a true copy of map or plat recorded in the Register of Deeds for record on
Date April 22, 1966
FILED IN
Date April 27, 1966
EXAMINED AND APPROVED
Date April 23, 1966
Quinn Green
CLERK

UNPLATTED



DESCRIPTION OF LAND PLATTED
The land embraced in the annexed plat of ASSESSOR'S PLAT NO. 54, Part of the North 1/2 Section 4, T.3 S., R.6 E., CITY OF ANN ARBOR, WASHTENAW CO., MICHIGAN is described as follows: Beginning at the North 1/4 corner, Section 4, T.3 S., R.6 E., Washtenaw County, Michigan; thence S89°57'30"E along the North line of said section 4 590.36 ft., to a Point on the centerline of Packard Street; thence S25°03'30"E along the centerline of Packard Street 204.12 ft.; thence S80°40'58"W 834.74 ft.; thence N00°00'57"W 320.59 ft.; thence S89°57'30"E 147.00 ft. to the Point of Beginning. Containing 19 lots numbered 1 through 19 consecutively

DEDICATION
KNOW ALL MEN BY THESE PRESENTS, That I, Walter Lahde, Assessor of the City of Ann Arbor, Washtenaw County, State of Michigan, by virtue of authority in me vested by Section 51, Act 172, of 1929, having been duly authorized by the City Council, have caused the land described in the annexed plat to be surveyed, laid out and platted, to be known as ASSESSOR'S PLAT NO. 54, Part of the North 1/2 Section 4, T.3 S., R.6 E., CITY OF ANN ARBOR, WASHTENAW CO., MICHIGAN, and that the streets and alleys are now being used for public purposes and that title to the road known as Jorn Court has been conveyed to the City of Ann Arbor and that the plat conforms with the requirements of Sec. 51, Act 172 of 1929, as amended and that the easements indicated on said plat are not dedicated to the public but reserved for public utilities, and any other use designated hereon, and no permanent structures are to be located within said easements.
WITNESS - WAYNE JOHNSON
WITNESS - LESLIE F. SCHWANBECK
WALTER LAHDE, ASSESSOR OF THE CITY OF ANN ARBOR

ACKNOWLEDGMENT
STATE OF MICHIGAN }
County of Washtenaw } ss
On this 5th day of March, A.D., 1965, before me, a Notary Public in and for said County, personally came the above named Walter Lahde, Assessor of the City of Ann Arbor, known to me to be the person who executed the above dedication, and acknowledged the same to be his free act and deed as such Assessor.
Esther I. Michelfelder
ESTHER I. MICHELFELDER
Notary Public, Washtenaw County, Mich.
My Commission expires January, 1968

MUNICIPAL APPROVAL
This plat was approved by the common council of the City of Ann Arbor, at a meeting held Nov. 1, 1965, and is in compliance with Section 19a Act 172, Public Acts of 1929, as amended.
John P. Bentley
JOHN P. BENTLEY CLERK

SURVEYOR'S CERTIFICATE
I hereby certify that the plat hereon delineated is a correct one and that permanent metal monuments consisting of bars not less than one-half inch in diameter and 36 inches in length, or shorter bars of not less than one-half inch in diameter lapped over each other at least 6 inches with an over-all length of not less than 36 inches in depth have been placed at points marked (o) as thereon shown at all angles in the boundaries of the land platted, at all the intersections of streets, intersections of alleys, or of streets and alleys and at the intersections of streets and alleys with the boundaries of the plat as shown on said plat.
PLAT DRAFTED AND PREPARED BY: Murray J. Knowles, Jr.
Reg. Land Surveyor #5342

APPROVAL OF COUNTY PLAT BOARD
THIS PLAT WAS APPROVED BY THE Washtenaw County Plat Board at a meeting held Dec. 12, 1965.
Patricia Newkirk Hardy
Patricia Newkirk Hardy
County Register of Deeds
John P. Flook
John P. Flook
County Drain Commissioner
J. Martin Remp
J. Martin Remp
Auditor
Herbert G. Loeffler
Herbert G. Loeffler
Auditor

CERTIFICATE OF APPROVAL BY THE CITY PLANNING COMMISSION
This plat was approved by the City Planning Commission of the City of Ann Arbor, Michigan, at a meeting held on the 12th day of October, 1965.
John C. Spelman, Jr.
John C. Spelman, Jr. Chairman
Richard W. Lavelly
Richard W. Lavelly Secretary