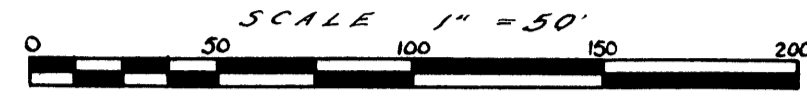


DEC 1 - 1953

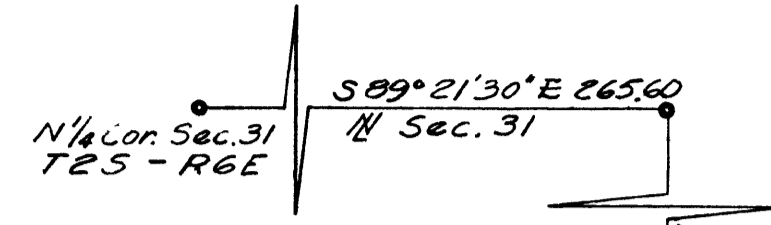
Sheet 1 of 2

# "ALEXANDER ACRES"

A SUBDIVISION OF PART OF THE NORTH ONE HALF OF SECTION 31, TOWN 2 SOUTH, RANGE 6 EAST, CITY OF ANN ARBOR, WASHTENAW COUNTY, MICHIGAN.



NOTE: ALL DIMENSIONS IN FEET AND DECIMALS THEREOF  
ALL DISTANCES ON CURVES ARE ARC LENGTHS

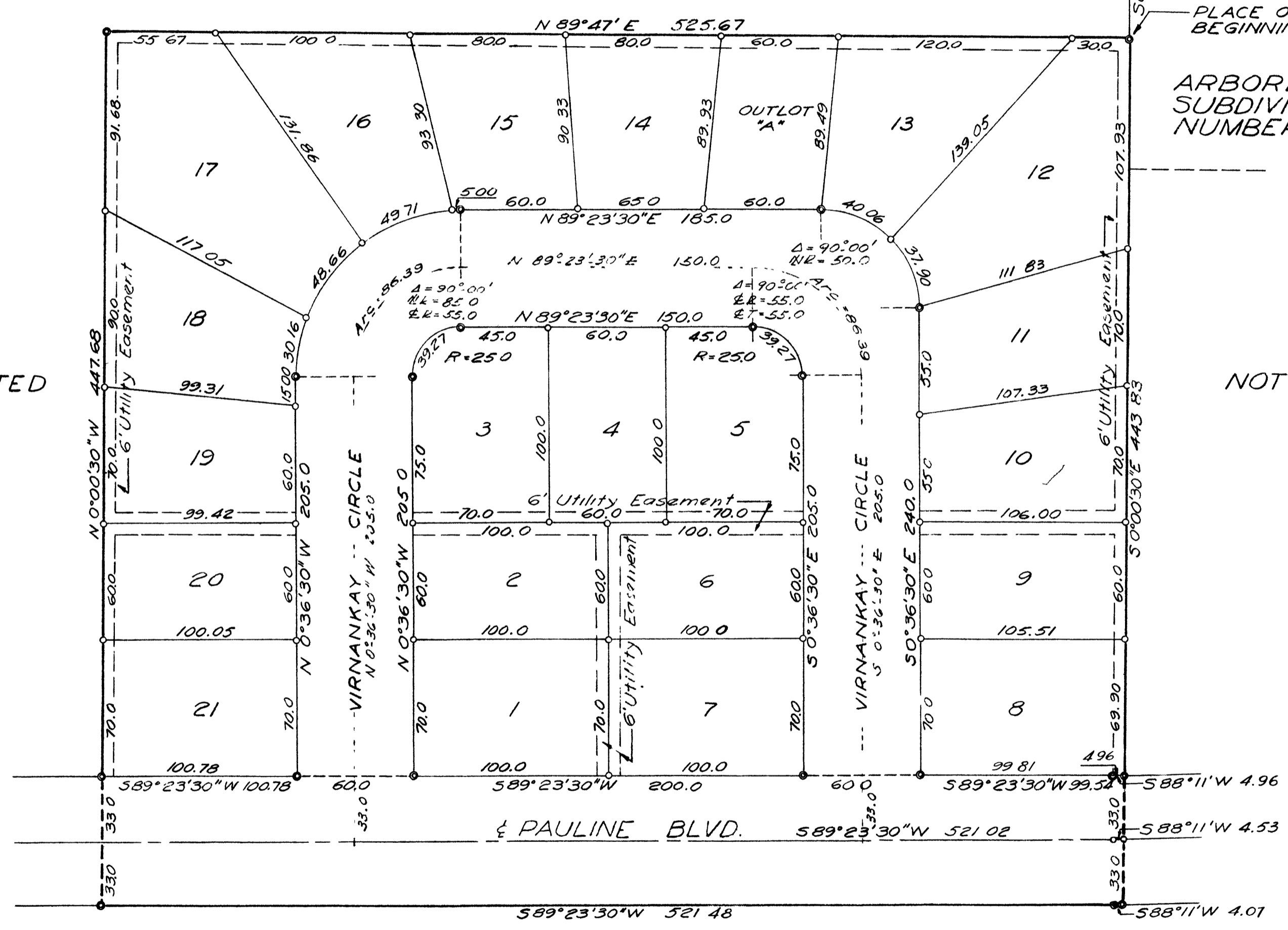


1 OF 2  
12/18/1953  
P0005001  
ALEXANDER ACRES  
LIBER:12 PAGE:6-7

NOT PLATTED

NOT PLATTED

NOT PLATTED



PLACE OF BEGINNING  
ARBORDALE SUBDIVISION NUMBER ONE

PAULINE BLVD.

# "ALEXANDER ACRES"

A SUBDIVISION OF PART OF THE NORTH ONE HALF OF SECTION 31, TOWN 2 SOUTH, RANGE 6 EAST, CITY OF ANN ARBOR, WASHTENAW COUNTY, MICHIGAN.



NOTE: ALL DIMENSIONS IN FEET AND DECIMALS THEREOF  
ALL DISTANCES ON CURVES ARE ARC LENGTHS

### DEDICATION

KNOW ALL MEN BY THESE PRESENTS, that we

**THE HANNAH BUILDING CO.**  
a MICHIGAN corporation by **EUGENE H. HANNAH**  
President, and **Eunice L. Hannah**, vice-president  
as proprietor have caused the land embraced in the annexed plat to be surveyed, laid out and platted to be known as **Alexander Acres**, a subdivision of part of the North 1/2 of Section 31, Town 2 South-Range 6 East, City of Ann Arbor, Washtenaw County, Michigan

and that the boulevard and drive as shown on said plat are hereby dedicated to the use of the public.

Signed and Sealed in the Presence of:  
**Frances Carmean** (Witness) **Eugene H. Hannah** (President)  
**Belva Lyons** (Witness) **Eunice L. Hannah** (vice-president)

### ACKNOWLEDGMENT

STATE OF Michigan }  
County of Washtenaw } ss.

On this 2nd day of October, A.D. 1953, before me, **Frances Carmean**, a Notary Public in and for said county appeared **Eugene H. Hannah and Eunice L. Hannah**

to me personally known, who being each by me duly sworn did say that they are the President and vice-president respectively of the **Hannah Building Co.** a Michigan corporation, and

that the seal affixed to said instrument is the corporate seal of said corporation and that said instrument was signed and sealed in behalf of said corporation by authority of its Board of Directors and the said **Eugene H. Hannah and Eunice L. Hannah** acknowledged said instrument to be the free act and deed of said corporation.

**Frances Carmean**  
Notary Public in and for Washtenaw County  
My Commission expires Aug. 13, 1956

### DESCRIPTION OF LAND PLATTED

The land embraced in the annexed plat of **Alexander Acres**, A subdivision of Part of the North 1/2 of Section 31, Town 2 South, Range 6 East, City of Ann Arbor, Washtenaw County, Michigan is described as follows: Commencing at the North 1/4 corner Section 31, T 2S R6E, Washtenaw County, Michigan, thence S 89°21'30" E 265.60' along the North Line of the section, thence S 0°00'30" E 766.14 feet for a place of beginning, thence continuing S 0°00'30" E 443.83 feet, thence S 88°11' W 4.07 feet, thence S 89°23'30" W 521.48 feet, thence N 0°00'30" W 447.68 feet, thence N 89°47' E 525.67 feet to the place of beginning.

### APPROVAL BY COUNTY PLAT BOARD

This plat was approved on the 4th day of December, 1953, by the Washtenaw County Plat Board

**Thomas A. Fitzgerald** (County Register of Deeds)  
**J. Martin Rempp** (Auditor)  
**Adolph F. Gross** (Auditor)  
**Herbert G. Loeffler** (Auditor)

### CERTIFICATE OF APPROVAL BY THE CITY PLANNING COMMISSION

This plat was approved by the Planning Commission of the City of Ann Arbor, Mich., at a meeting held on the 20th day of October, 1953

**John E. Swisher, jr.** (Chairman)  
**Sybil K. Bennett** (Secretary)

I hereby certify that this copy is a true copy of the map or plat forwarded the Register of Deeds for recording.  
Date December 15, 1953  
Filed in Auditor's Office  
Date December 22, 1953  
Examined and Approved  
Date December 15, 1953

**John B. [Signature]**  
PLAT ENGINEER

### SURVEYOR'S CERTIFICATE

I hereby certify that the plat hereon delineated is a correct one and that permanent metal monuments consisting of bars not less than one-half inch in diameter and 48 inches in length, or shorter bars of not less than one-half inch in diameter lapped over each other at least 6 inches with an over-all length of not less than 48 inches, encased in a concrete cylinder at least 4 inches in diameter and 48 inches in depth have been placed at points marked thus (⊙) as thereon shown at all angles in the boundaries of the land platted, at all the intersections of streets, intersections of alleys, or of streets and alleys, and at the intersections of streets and alleys with the boundaries of the plat as shown on said plat.

**Herbert S. Hicks**  
Registered Land Surveyor or Registered Professional Engineer  
Herbert S. Hicks, No. 1715

### MUNICIPAL APPROVAL

This plat was approved by the Board of Public Works of the City of Ann Arbor, Michigan, at a meeting held November 4, 1953

**Fred J. Looker** (Clerk)

### MUNICIPAL APPROVAL

This plat was approved by the Common Council of the City of Ann Arbor at a meeting held November 16, 1953

**Fred J. Looker** (Clerk)

### COUNTY TREASURER'S CERTIFICATE

Office of County Treasurer, Washtenaw County. I hereby certify, that there are no tax liens or titles held by the State on the lands described hereon, and that there are no tax liens or titles held by individuals on said lands, for the five years preceding the 21st day of November, 1953 and that the taxes for said period of five years are all paid, as shown by the records of this office.

This certificate does not apply to taxes, if any, now in process of collection by township, city or village collecting officers.  
**W. F. Vernon** (County Treasurer)

### COPY

Register's Office }  
Washtenaw County, } ss.  
Plat of **Alexander Acres**  
City of **Ann Arbor**  
was Recorded this 18th day of **December**, 1953 at 4:50 o'clock  
A.M. in Liber 12 of **Plats**  
on Page 6 + 7  
**Thomas A. Fitzgerald**  
Register of Deeds

ORIGINAL ON FILE