

WELCOME!

*The Lower Town Area
Mobility Study Meeting
Will Begin Soon.*

Technology Overview – Things to Know

- To help prevent “Zoombombing,” (when an unauthorized person or stranger joins a Zoom event and says offensive comments or shows offensive images), the video, speaking, and screen sharing functions are available to presenters, but disabled for participants.
- You can communicate through the Q&A feature.
- You can leave and rejoin the meeting at any time (unless the meeting is at capacity or you are removed for inappropriate behavior).
- Multiple opportunities for questions will be provided throughout the presentation.
- Presentation and additional materials are available at www.a2gov.org/lowertown

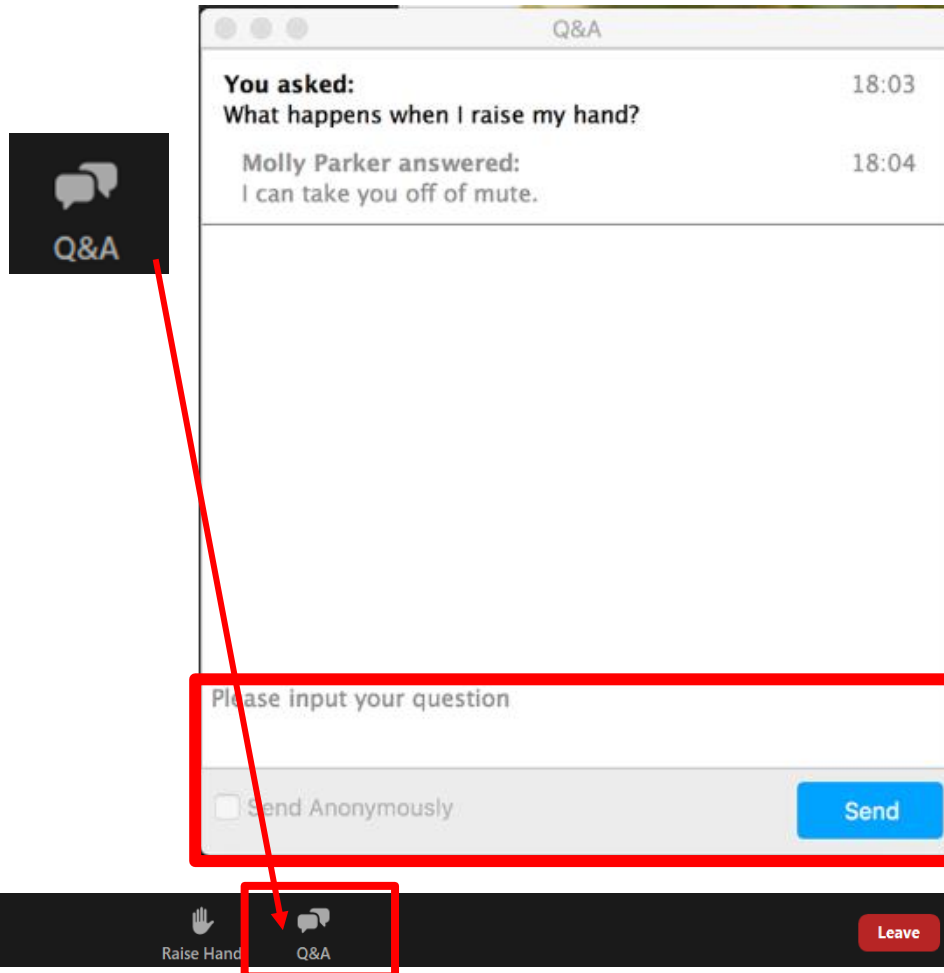
Technology Overview – Ask a question/share a comment

We will be using the Q&A feature for those using a computer and the Raise Hand feature for those who are on the phone.

Computer

Q&A:

- Please use the Q&A feature located at the bottom of the screen to ask a question/comment.
- Type your question/comment.
- Click Send.



Phone

Raise Hand:

- Select *9 to raise your hand
- You will be identified by the last 3 digits of your phone number



Zoom Meeting Norms

- Commit to learning and avoid speculation – we encourage you to ask questions through the chat feature so we can explore the issue together.
- When speaking over the phone, please move to a quiet area and silence any background sounds. We want to be sure that we hear what you are saying.
- Please remember the importance of rights and the dignity of others. With that, we ask that you:
 - Critique ideas, not people.
 - Are thoughtful about your language so this can be a comfortable and respectful forum for all participants - inappropriate written and/or verbal comment or language, including personal attacks and accusations, will result in the attendee being removed from the meeting.

Public Engagement Outreach Survey

Thank you for participating with the City of Ann Arbor. The city is trying to gain a better understanding of who we are reaching to find ways we can continuously improve public engagement efforts and support inclusivity. To help us gain this understanding, please complete this brief, anonymous survey. This survey is completely voluntary; you are not required to fill it out.

To fill out the survey, please visit: <https://bit.ly/2X7LDxW>

Follow-up Expectations

- Meeting summaries will be posted by Monday, November 23 on the project website.
- Your feedback will be considered in addition to technical and cost considerations for the recommendations of this study.



Public Meeting #2

Vision, Goals, and Alternatives

Lower Town Area Mobility Study

City of Ann Arbor

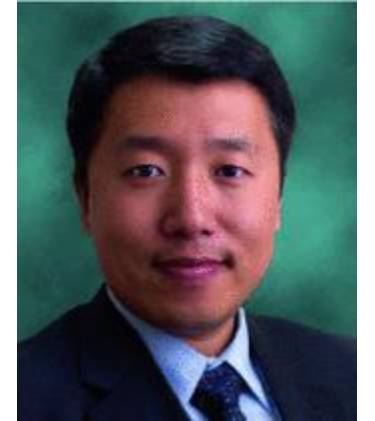
YOUR PROJECT TEAM



Eric Dryer
Transportation Planner



Lauren Hood
Facilitator



Luke Liu
City Project Manager



Stephen Dearing
Traffic Engineer



Heather Seyfarth
City Planner



**Take a Moment to Participate in our
Poll!**

www.ahaslides.com/lowertown

Why Do a Mobility Study?

- Need a holistic view of transportation conditions in the Lower Town area
- Consider all travelers in the area
- Overall goal is to make traveling around the Lower Town Area easier, safer, and more efficient



What We're Studying

Purpose is to identify opportunities to make traveling easier within Lower Town.

Looking Specifically at:

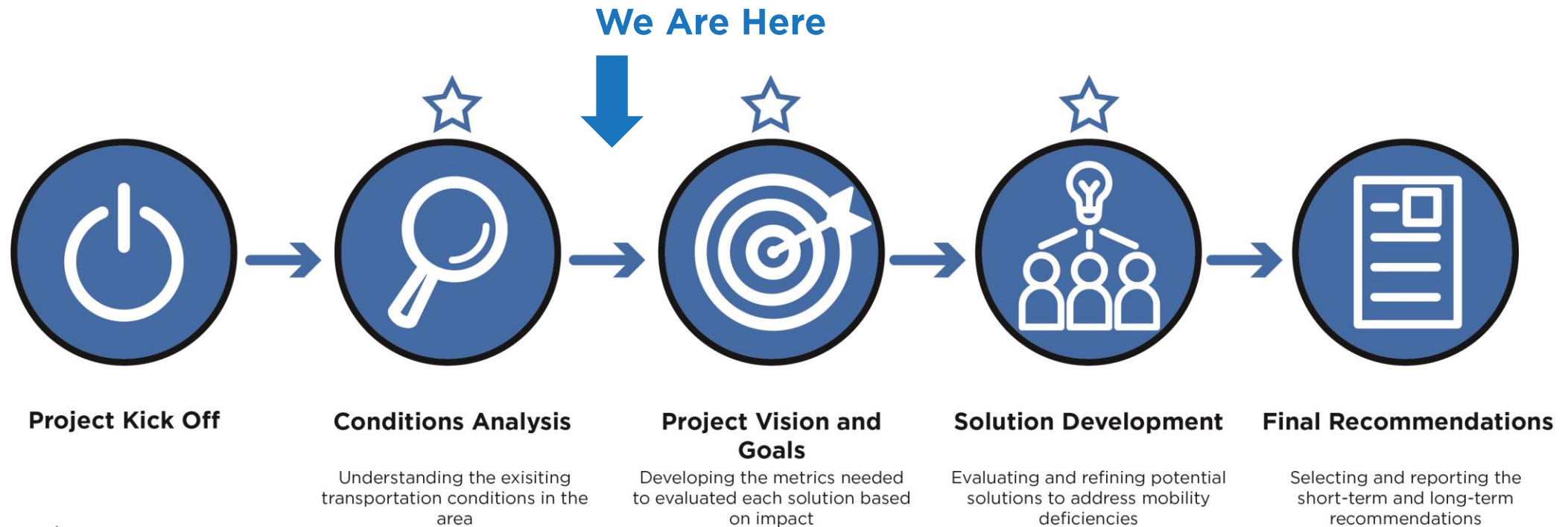
- Traffic Congestion
- Bicycle Travel and Connections
- Pedestrian Movements
- Public Transit
- Roadway Safety
- Intersection Designs



Downtown Ann Arbor

Study Process

- Two Year Timeline
- Nearing the halfway point



Outcomes of the Study

- Identify ways to improve mobility for all users
 - Drivers, cyclists, pedestrians, transit riders, etc.
- Explore opportunities to change travel habits
 - Changing travel habits and patterns can help limit congestion issues
- Innovative solutions that improve efficiency of the system



Today's Public Meeting

- Review Existing Conditions Findings
- Discuss Vision and Goals for Lower Town Area
- Brainstorming for Alternatives



Public Engagement

SEPTEMBER 25TH, 2020
12 - 1 PM

WHAT IS A MOBILITY STUDY?

OCTOBER 9TH, 2020
12 - 1 PM

**TRAFFIC CONDITIONS:
WHAT CONTRIBUTES TO TRAFFIC
CONGESTION IN THE AREA?**

OCTOBER 23RD, 2020
12 - 1 PM

**BICYCLE AND PEDESTRIAN
CONDITIONS: HOW CAN WE MAKE
WALKING AND BIKING EASIER?**

NOVEMBER 6TH, 2020
12 - 1 PM

**SAFETY CONDITIONS:
HOW CAN WE MAKE TRAVELING
SAFER?**

Virtual Office Hours



Public Meetings



Stakeholder Interviews



What We've Heard

Stakeholder Concerns

- Gaps in non-motorized facilities
- Few walkable businesses
- Growing population in area
- Peak hour congestion from commuters
- Inadequate public transit frequency
- Traffic safety discourages walking/biking
- New development parking is inadequate
- Limited crossing opportunities of Huron River



What We've Heard

Concerns from Virtual Office Hours

- Specific areas in Study Area in need of safety improvements
- Residents don't feel comfortable walking and biking
- Transit is not frequent enough to use
- Heavy traffic from M-14 coming through area
- Bike infrastructure is disconnected
- Safety concerns around A2 STEAM school
- New development is adding to traffic
- Safety conflicts between bikes and pedestrians



What We've Heard

Opportunities

- More frequency and more visibility to transit
- Improve walking connection to Hospital
- Easier access to Border-to-Border trail
- Add more mixed-use retail to new developments
- Improve snow clearance in winter for bikes and peds
- Add safe crossing infrastructure
- Create a cultural shift to more walking and biking
- Educate public on safely using streets



Traffic Conditions in Lower Town

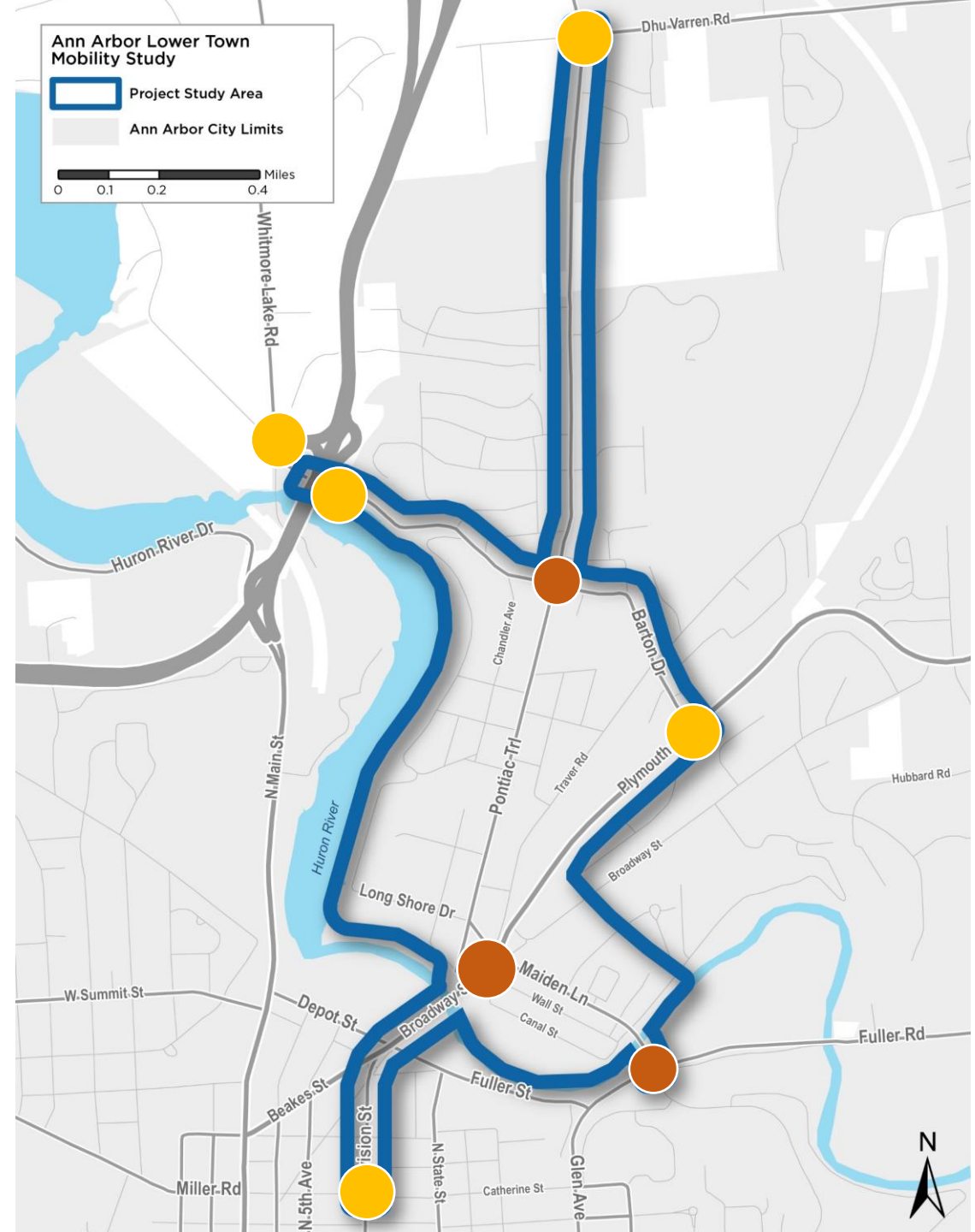
High Congestion Intersections

Based on Model

- Plymouth Rd at Barton Dr
- US-23 off-ramp to Barton Dr
- Barton Dr to US-23 on-ramp
- Dhu Varren Rd at Pontiac Trail
- Division St at Catherine St

Based on Observation

- Barton Dr at Pontiac Trail
- Maiden Ln/Broadway St/Moore St
- Maiden Ln at Fuller Rd



Travel Patterns

- 55% of trips along Lower Town area roads are passing through the area
- 21% are coming to Lower Town from other areas in and around Ann Arbor
- 20% are traveling from Lower Town to districts outside
- Only 4% of trips are completely within Lower Town



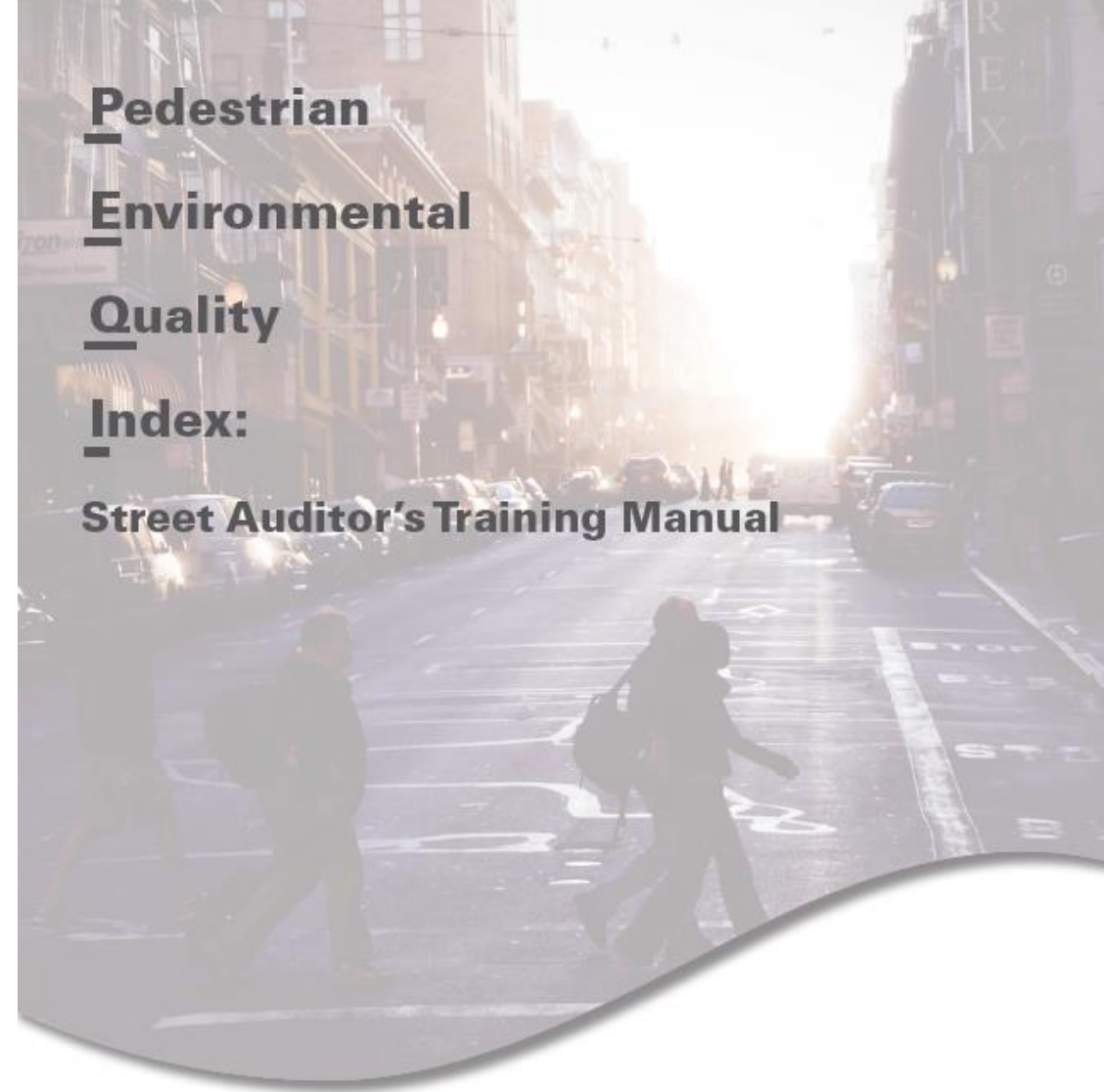
Ped/Bike Analysis Approach

Team used two tools:

- Pedestrian Environmental Quality Index (PEQI)
- Bicycle Environmental Quality Index (BEQI)

Benefits of these tools:

- Based on feedback from national experts
- Comprehensive
- Customizable
- Observational field survey



San Francisco Department of Public Health

Program on Health, Equity and Sustainability

<http://www.sfphes.org/>

October 2012



Input Categories

Intersection Safety

- Crosswalks
- Traffic Control

Traffic

- Number of Lanes
- Speed Limit

Street Design

- Width of Facility
- Connectivity






Land Use

- Retail Use
- Public Art

Perceived Safety

- Street Lighting
- Signs

PEQI & BEQI Scores

-  0 - 20 Unsuitable for pedestrians/bicyclists
-  21 - 40 Poor pedestrian/bicyclist conditions exist
-  41 - 60 Basic pedestrian/bicyclist conditions exist
-  61 - 80 Reasonable pedestrian/bicyclist conditions exist
-  81 - 100 Ideal pedestrian/bicyclist conditions exist



Pontiac Trail & Dhu Varren Rd



Barton Dr & Plymouth Rd



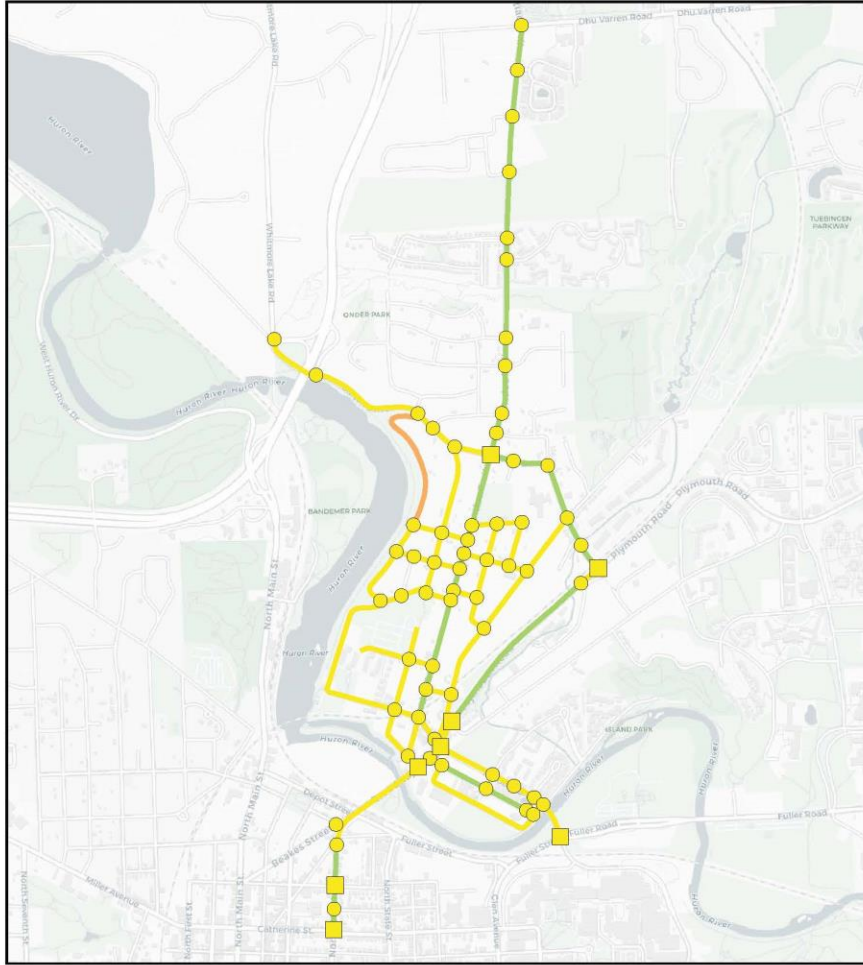
Plymouth Rd Broadway St



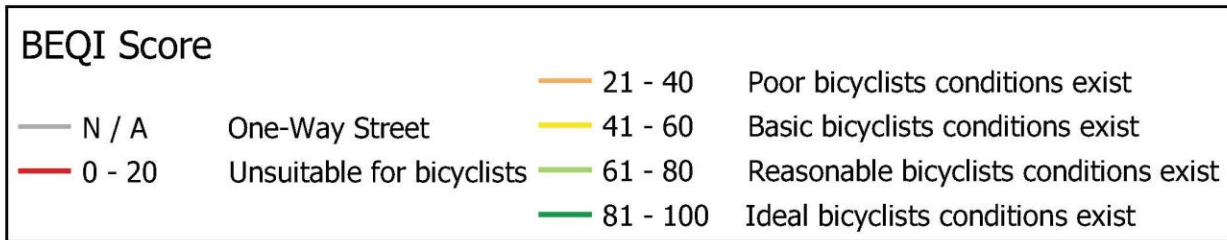
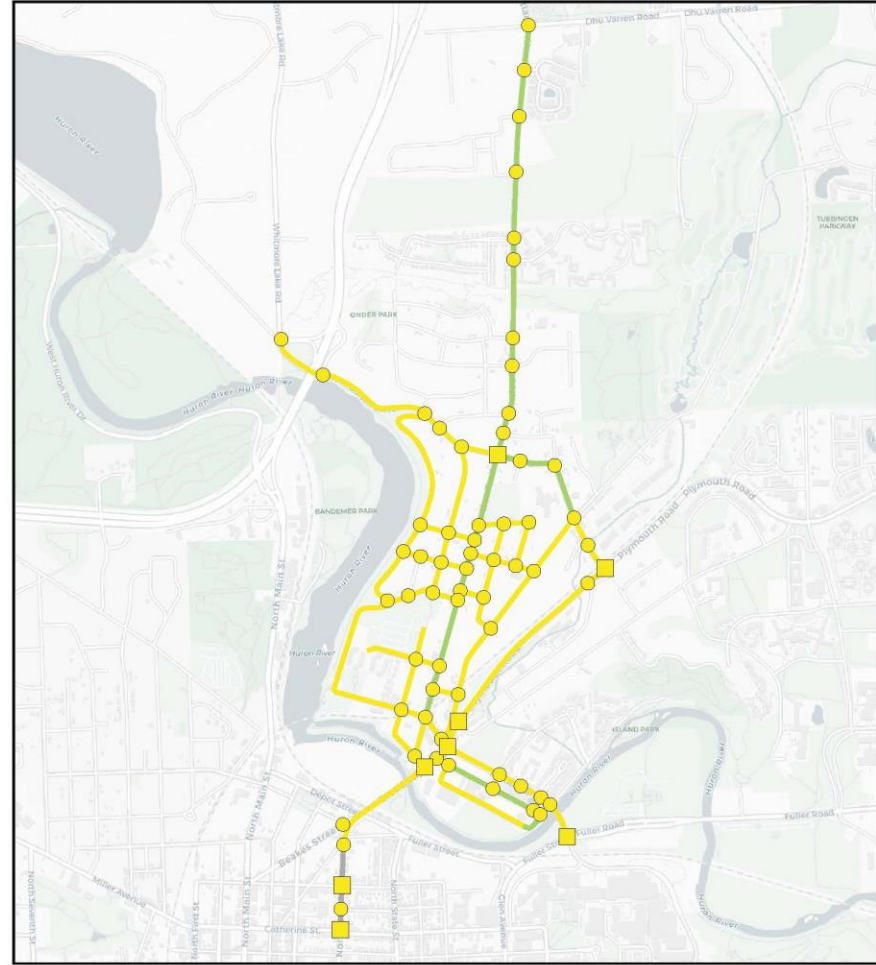
Pontiac Trail & Amherst Ave

Bicycle Environmental Quality Index (BEQI)

N / E Side



S / W Side



Street & Intersection BEQI Scores calculated based on San Francisco Department of Public Health Methodology.

Safety

Crash Analysis

- 5-year analysis
- 479 crashes (264 at 3 major intersections)
- 4 ped and 10 bicycle crashes
- Recommended mitigations include:
 - Roundabouts
 - Providing paved shoulders
 - Checking clearance intervals for signalized intersections
 - Leading pedestrian intervals
 - Alternate intersection configurations
 - Enhanced pedestrian crossings



Review of Uncontrolled Pedestrian Crossings

- Evaluation in accordance with NCHRP 562 “Improving Pedestrian Safety at Unsignalized Crossings”
- 31 existing pedestrian crossings were evaluated
- 1 merited Standard Plus treatment
- 30 merited Standard (5 did not have in place)
- 4 new locations identified



Road Safety Audit



Pedestrian
Infrastructure



Speed
Management



Traffic
Congestion



Bicycle
Infrastructure



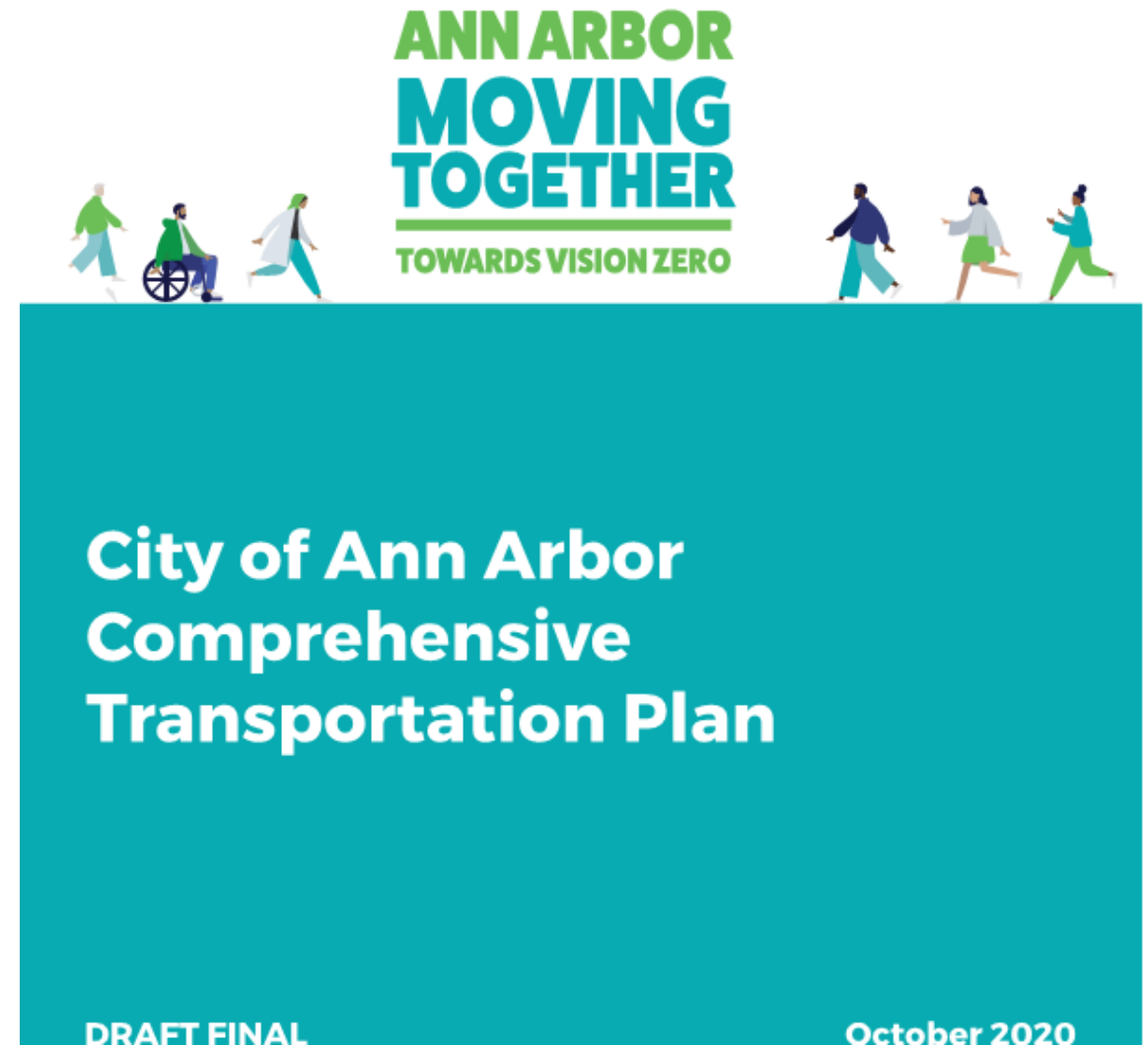
Pavement
Conditions



Traffic Control
Devices

Comprehensive Transportation Plan

- Ann Arbor: Moving Together – creating a safer, more sustainable, accessible, and equitable transportation system for everyone.
- Mobility Values
 - Safety
 - Mobility
 - Accessibility for All
 - Healthy People and Sustainable Places
 - Regional Connectivity
- Critical Goals
 - Vision Zero
 - Carbon Neutrality



Workshop Structure

- Split into Breakout Groups
- 1st Breakout – 2 parts (15 Minutes)
 - Lower Town Area Issues
 - Project Goals
- 2nd Breakout (20 Minutes)
 - Alternatives
- Report out to larger group between and after breakouts

Issues and Goals

15 Minutes

Issues Q1:

What do you see as the biggest transportation issues in the Lower Town Area?

Issues Q2:

What is your experience moving through the Lower Town Area, as a driver, pedestrian, bicyclist or transit rider? How could your experience be improved?

Goals Q1:

What goals do you have in improving the mobility conditions in Lower Town

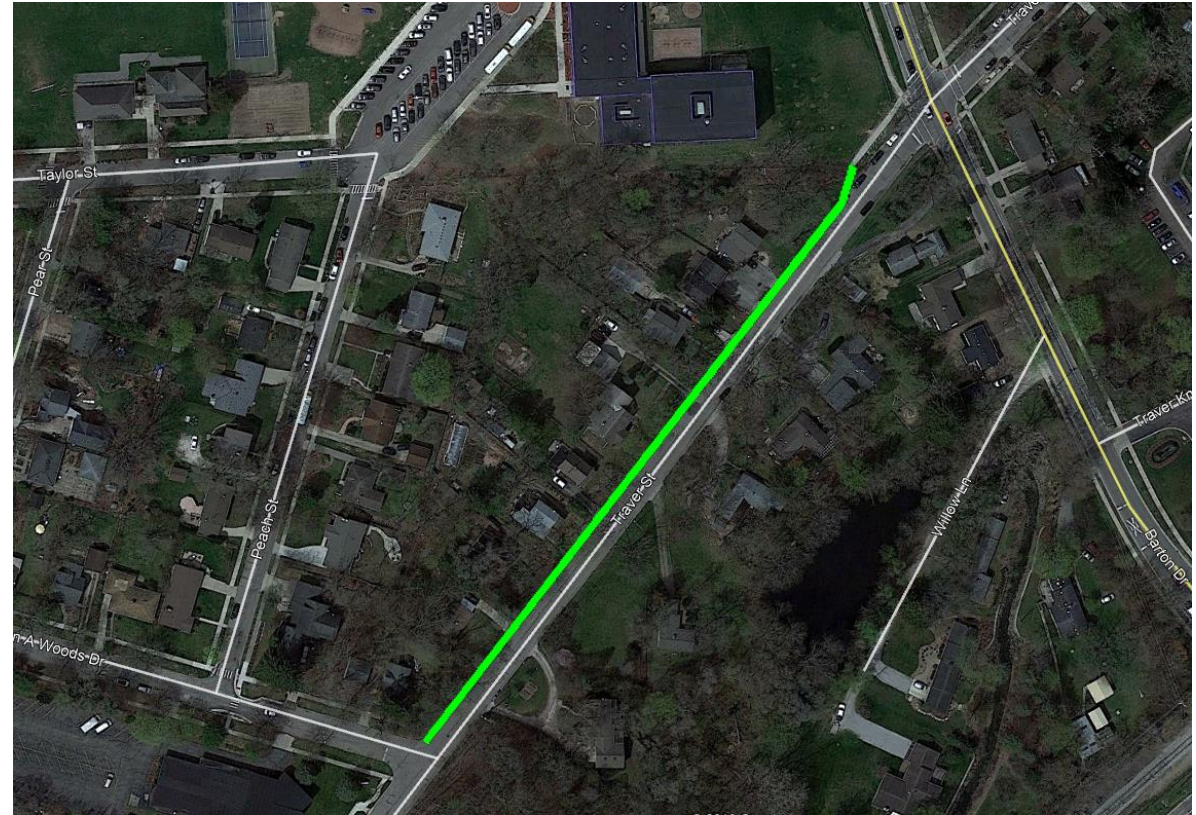
Report Out

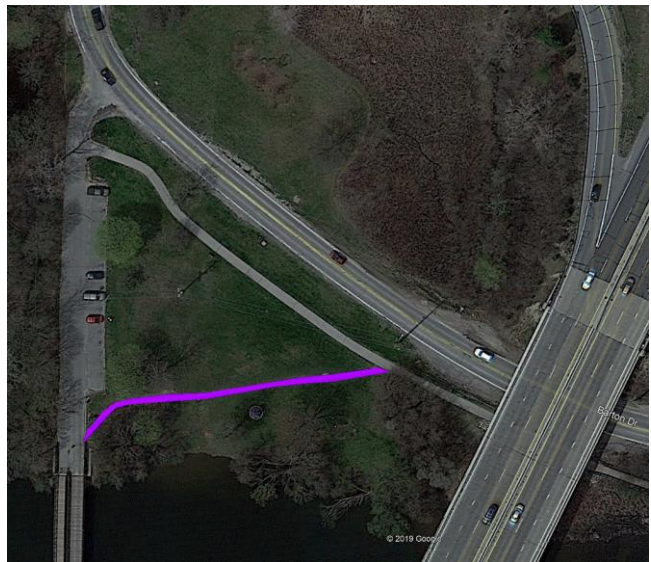
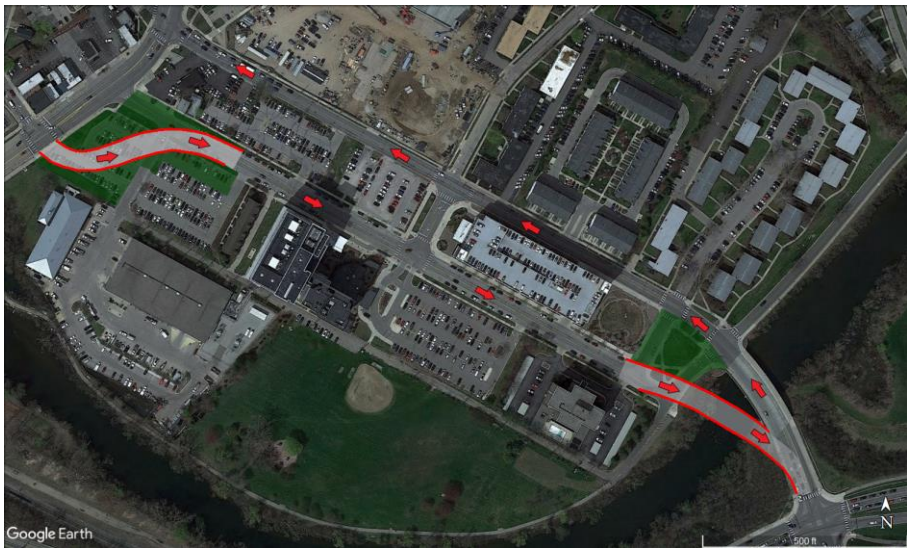
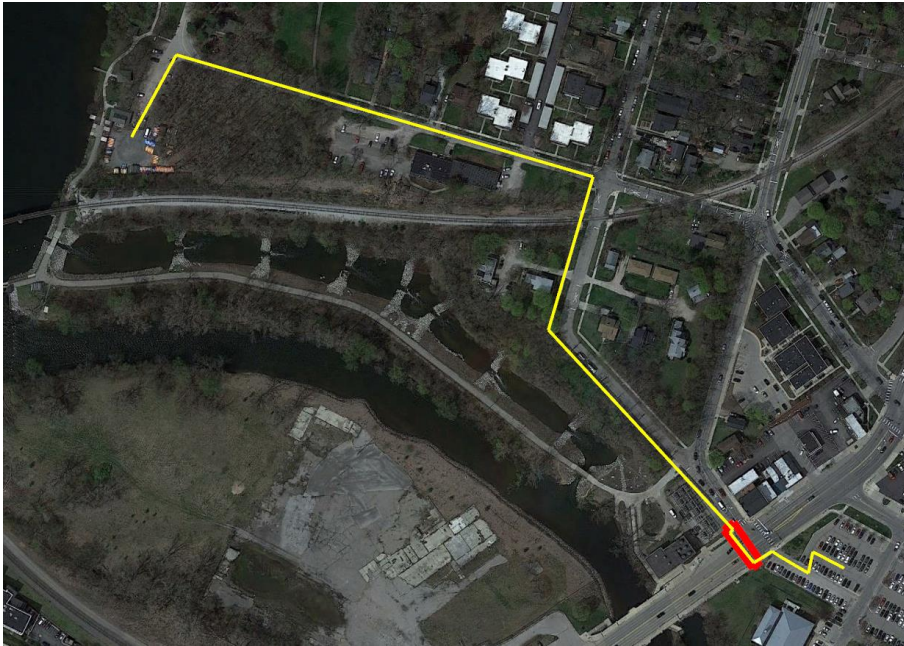
Let's Discuss Your Group's Findings

Alternatives

Potential Alternatives

- Road Safety Audit Improvement Alternatives:
 - Intersection changes
 - Lighting upgrades
 - Non-motorized infrastructure
 - Transit Improvements
 - Speed Management
 - ADA Access





Roundabout image

Transportation Demand Management

- Strategies to redistribute when and how people travel through Lower Town
 - Improved non-motorized conditions
 - Improve public transit
 - Ridesharing programs
 - Incentives to give up parking
 - Flexible work times
 - Transit supportive development



Improvement Ideas from the Community

- From Virtual Office Hours:
 - RRFBs along Pontiac Trail
 - Speed management along Pontiac Trail
 - Seamless Border-to-Border trail connection from Broadway
 - Green bike lane paint
 - Driver and pedestrian safety education
 - Park and Ride Locations



Alternatives

20 Minutes

Alternatives Q1:

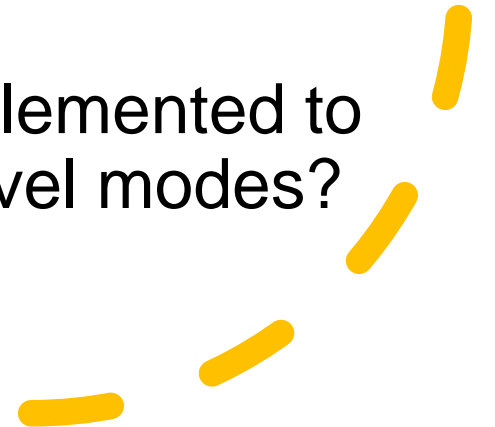
What would you like to see done in the Lower Town Area to improve mobility conditions?

Alternatives Q2:

Consider the most problematic areas in Lower Town and share ideas for potential improvements.

Alternatives Q3:

What improvements could be implemented to encourage residents to switch travel modes?



Report Out

Let's Discuss Your Group's Findings

Next Steps

- Summary of Public Meeting #2
- Consolidation and Refinement of Alternatives
- Analysis and Evaluation of Alternatives
- Public Meeting #3 – Present Alternatives
- Report Development
- Public Meeting #4 – Overall Findings and Recommendations