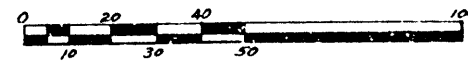


PLAT OF
"GEORGE P. WHALEY'S SUBDIVISION"
of part of Lots 15 and 17 and all of Lot 16 of W.S. Maynard's Second Addition,
CITY OF ANN ARBOR
Washtenaw County, Michigan

Scale: 1 inch = 40 feet.



OR Original
 Feb 21-1918
 Geo. L. Johnson
 County Auditor

POLAROID
 GEORGE P. WHALEY'S SUBDIVISION
 PLAT 4
 02/23/1918
 1 OF 1

DEDICATION

Know all Men by These Presents, That we George P. Whaley
 and Alla D. Whaley his wife; George Monroe Swartout
 and Augusta Swartout his wife; and Catherine Parker
Batham as proprietors have caused the land embraced in the annexed plat to be surveyed,
 laid out and platted, to be known as "George P. Whaley's Subdivision" City of Ann Arbor, Washtenaw
 County, Michigan and that the streets and alleys as shown on said plat are hereby dedicated to the
 use of the public.

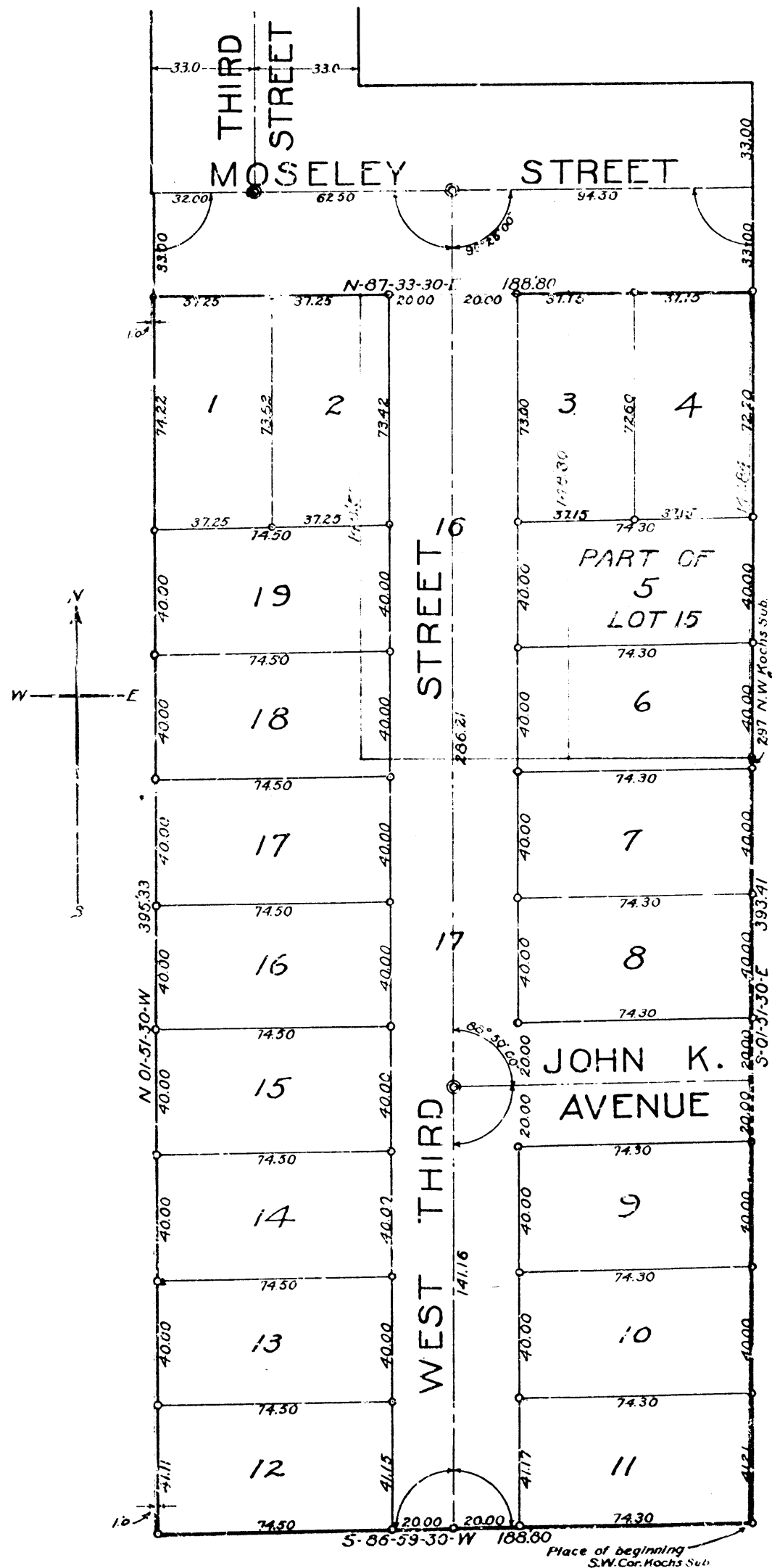
George P. Whaley [L. S.]
Alla D. Whaley [L. S.]
George Monroe Swartout [L. S.]
Mrs. Augusta Swartout [L. S.]

Signed and sealed in the presence of:
Walter C. Conway
Josephus Golden

STATE OF MICHIGAN, }
 County of Washtenaw, } ss.
 On this 11th day of Sept, A. D. 1917
 before me, Josephus Golden, a Notary Public in and for said County,
 appeared George P. Whaley and Alla D. Whaley his wife;
Catherine Parker Batham and George Monroe Swartout his wife; and
Augusta Swartout his wife known to me to be the persons who
 executed the above dedication, and acknowledged the same to be their free act and deed.
Josephus Golden
 Notary Public, Washtenaw County, Mich.
 My Commission expires March 1-1921

DESCRIPTION OF LAND PLATTED

Beginning at the southwest corner of John Koch's Subdivision, on Section 29, in the City of Ann
 Arbor, Washtenaw County, Michigan; thence S. 86° 59' 30" W. 188.80 feet, thence N. 1° 51' 30" W. 395.33
 feet, thence N. 87° 33' 30" E. 188.80 feet, thence S. 1° 51' 30" E. 393.41 feet to the place of beginning, being
 part of lots 15 and 17 and all of lot 16 of W. S. Maynard's Second Addition to the City of Ann Arbor,
 Washtenaw County, Michigan.



SURVEYOR'S CERTIFICATE

I hereby certify that the plat hereon delineated is a correct one, and that permanent monuments,
 consisting of iron pipes, three-quarters of an inch in diameter and two feet long, have been planted at
 all points marked thus \odot , and that all points marked thus \bullet , iron pipe as above surrounded with
 stone, have been planted as thereon shown.

H. H. Atwell
 Surveyor.

CERTIFICATE OF APPROVAL BY BOARD OF PUBLIC WORKS

This plat was approved by the Board of Public Works of the City of Ann Arbor, of the County
 of Washtenaw, State of Michigan, at a meeting held October 17, 1917

(Date)
J. G. Reynolds
 Clerk.

CERTIFICATE OF APPROVAL BY THE COMMON COUNCIL

This plat was approved by the Common Council of the City of Ann Arbor, Washtenaw County,
 State of Michigan, at a meeting held December 17, 1917

(Date)
J. G. Reynolds
 Clerk.

COUNTY TREASURER'S CERTIFICATE

Office of County Treasurer, Washtenaw County, Michigan

I hereby certify that there are no tax liens or titles held by the State on the lands
 described below, and that there are no tax liens or titles held by individuals on said
 lands for five years preceding the 11th day of Sept, 1917, and
 that the taxes for said period of five years are paid as shown by the records of this office.

DESCRIPTION

Beginning at the southwest corner of John Koch's Subdivision, on Section 29, in the City of Ann
 Arbor, Washtenaw County, Michigan; thence S. 86° 59' 30" W. 188.80 feet, thence N. 1° 51' 30" W. 395.33
 feet, thence N. 87° 33' 30" E. 188.80 feet, thence S. 1° 51' 30" E. 393.41 feet to the place of beginning, being
 part of lots 15 and 17, and all of lot 16 of W. S. Maynard's Second Addition to the City of Ann Arbor,
 Washtenaw County, Michigan.

J. G. Reynolds
 County Treasurer.

CERTIFICATE OF APPROVAL BY THE BOARD OF COUNTY AUDITORS

This plat was approved on the 21st day of July, 1917, by
 the Board of County Auditors of the County of Washtenaw, State of Michigan.

J. G. Reynolds
John K. ...

NOTE—Red lines show location of old lot lines as well as they may be determined. The plat of
 W. S. Maynard's Addition to the City of Ann Arbor, Washtenaw County, Michigan, is deficient and the
 dimensions given do not appear to be consistent. The lines as established fit the lines of occupation
 which are old enough to fix the boundaries.

RECORDED
 February 1918
 P. L. ...
 Mabel E. Blum 1914