

Primary Control Point

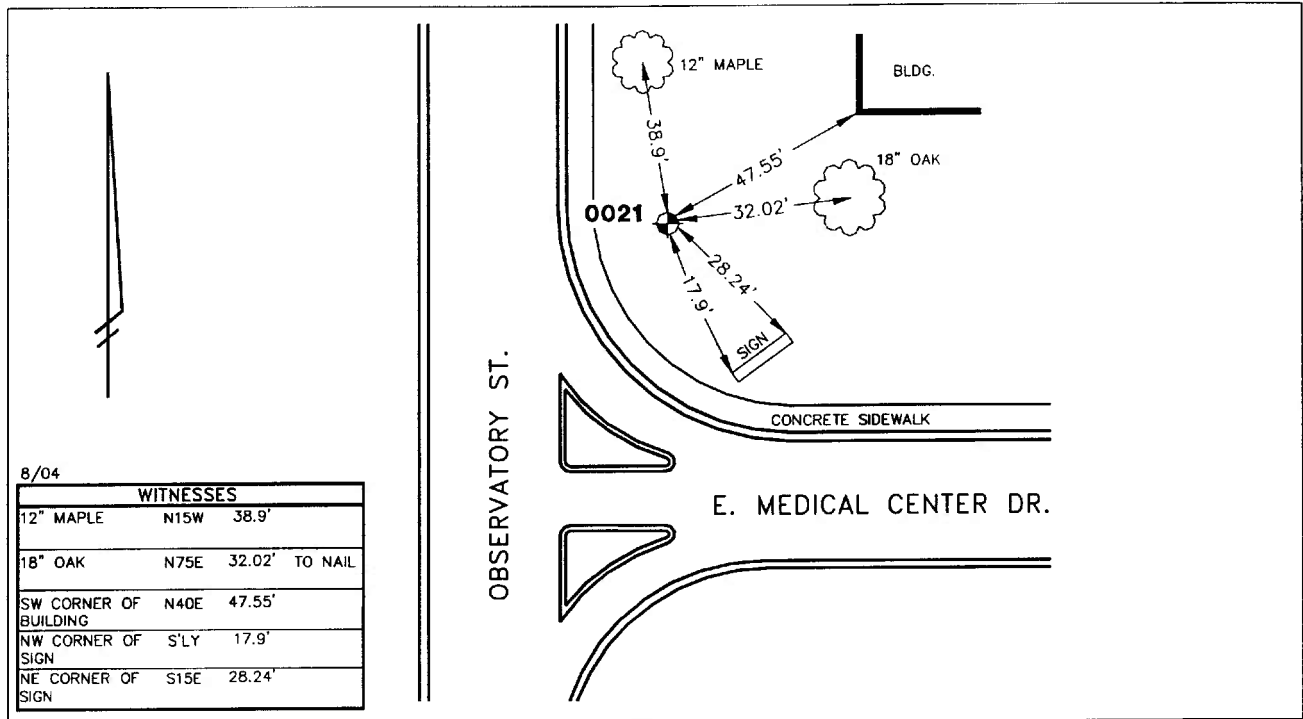
AAGRS No. 0021

City of Ann Arbor

NGS PID NE1045

Public Services Area • Project Management Unit
CONTROL STATION DATA SHEET

Approximate Location: Observatory St. and E. Medical Center Dr.



STATION 0021 IS LOCATED AT THE NORTHEAST CORNER OF OBSERVATORY STREET AND EAST MEDICAL CENTER DRIVE, SAID STATION BEING IN THE NORTHEAST 1/4 OF SECTION 28, ANN ARBOR TOWNSHIP IN THE CITY OF ANN ARBOR, MICHIGAN. THE STATION IS LOCATED APPROXIMATELY 63' NORTH OF THE BACK OF CURB ON THE NORTH SIDE OF EAST MEDICAL CENTER DRIVE AND 42' EAST OF THE BACK OF CURB ON THE EAST SIDE OF OBSERVATORY STREET. SAID STATION IS A PRIMARY CONTROL STATION AND IS DESCRIBED AS A U.S. COAST AND GEODETIC SURVEY TRIANGULATION STATION DISC STAMPED: MICHIGAN 1943, SET IN TOP OF A ROUND CONCRETE MONUMENT, FLUSH WITH THE GROUND. THIS IS A NATIONAL GEODETIC SURVEY STATION, WITH THE DESIGNATION: MICHIGAN, AND PID: NE1045.

Horizontal		Vertical	
Latitude (dms)	N 42 16 53.88998	Accuracy	1st Order Class II
Longitude (dms)	W 83 43 51.07157	Datum	NAVD 88
State Plane Zone	2113 MI South	Elevation in meters	275.443
Scale	0.99996194	Elevation in International feet	903.68
Geoid Height in meters	-33.91		
Convergence (dms)	0 25 57.7		
Accuracy	1st Order		
Datum	NAD 83		No. 0021
Easting (X) in meters	4052442.213		Sector: EC
Northing (Y) in meters	87020.782		
Easting (X) in International feet	13295414.085		
Northing (Y) in International feet	285501.253		