

# Quick Build Opportunities

---



**ANN ARBOR  
MOVING  
TOGETHER**  

---

**TOWARDS VISION ZERO**

# Quick Build Opportunities

1. Ann (Main – 5th)\*
2. Glen/Fuller\*\*
3. Liberty/Stadium
4. Maple (Dexter – Miller)\*
5. Packard (Main – State)\*\*
6. S. University/State\*\*
7. Washington (Ashley – Fletcher)\*

\*\* Tier 1 corridor/intersection

\* Tier 2 corridor/intersection



# Ann Street

## Primary safety concerns

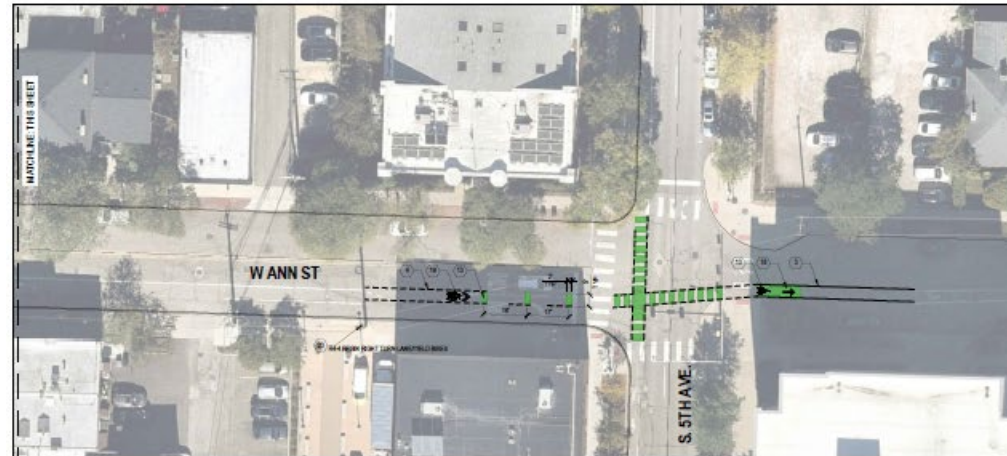
- Crashes involving pedestrians and bicyclists
- Volume of crashes

## Objectives

- Reduce exposure to pedestrians
- Increase visibility of bicyclists

## Strategies

- Bike thru-intersection markings
- Paint/post bump-outs



# Glen/Fuller

## Primary safety concerns

- Crashes involving bicyclists
- Head on – left turn crashes
- Angle crashes

## Objectives

- Reduce speeds, especially turning speeds
- Increase visibility of bicyclists

## Strategies

- Bike markings
- Hardened centerlines
- Paint/post bump-outs & island



# Liberty/Stadium

## Primary safety concerns

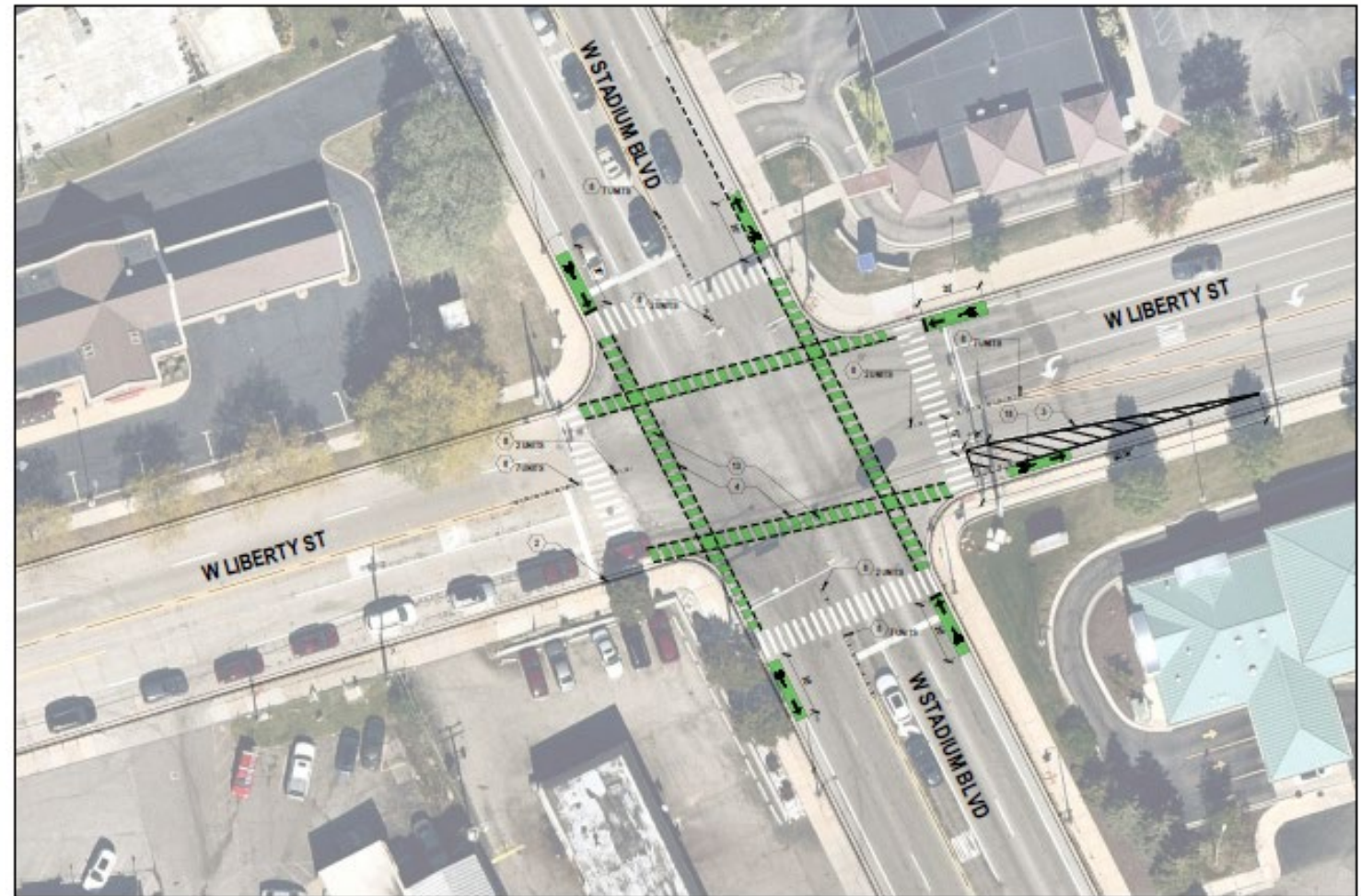
- Head On – Left Turn crashes
- Volume of crashes
- Crash involving bicyclists
- Wide and intimidating crossings for both pedestrians and bicyclists

## Objectives

- Reduce turning speeds
- Increase visibility of bicyclists

## Strategies

- Bike thru-intersection markings
- Hardened centerlines



# Maple Road (Foss – Dexter)

## Primary safety concerns

- Volume of crashes
- Abrupt end to bike lane at Dexter

## Objectives

- Reduce vehicle speeds
- Increase comfort and visibility of bicyclists

## Strategies

- Bike thru-intersection markings
- Bike lane “gateways”
- Hardened centerlines
- Paint/post islands



Photo:qwickkurb.com

# S. University/State

## Primary safety concerns

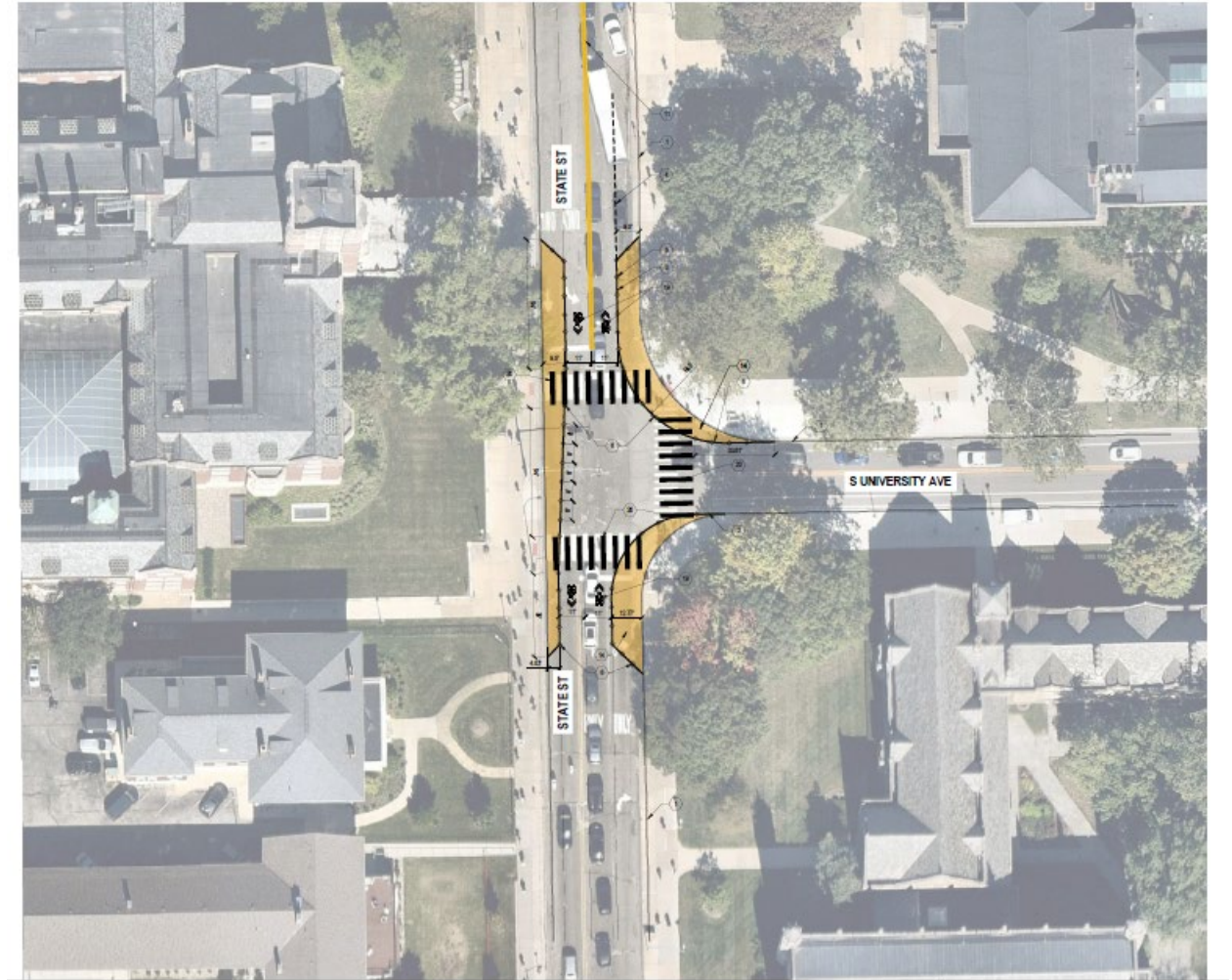
- Crashes involving bicyclists
- Volume of pedestrians
- Complexity of the intersection (all-way stops with turn lanes)

## Objectives

- Simplify intersection
- Prioritize pedestrian and bicycle travel

## Strategies

- Removal of turn lanes / change of traffic patterns
- Paint/post bump-outs



# Packard Street (Main – State)

## Primary safety concerns

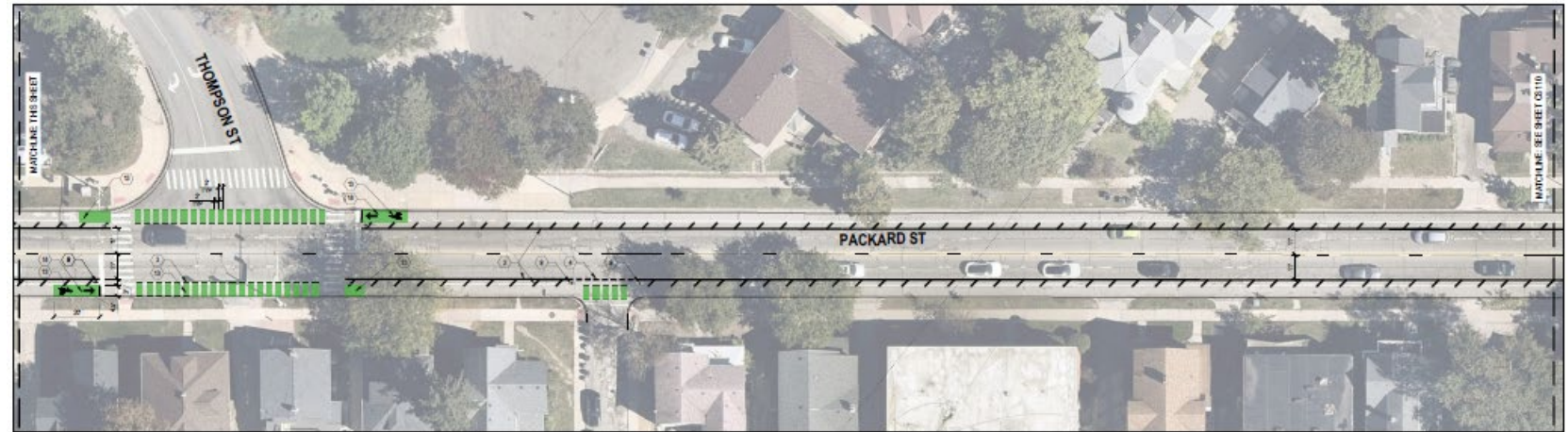
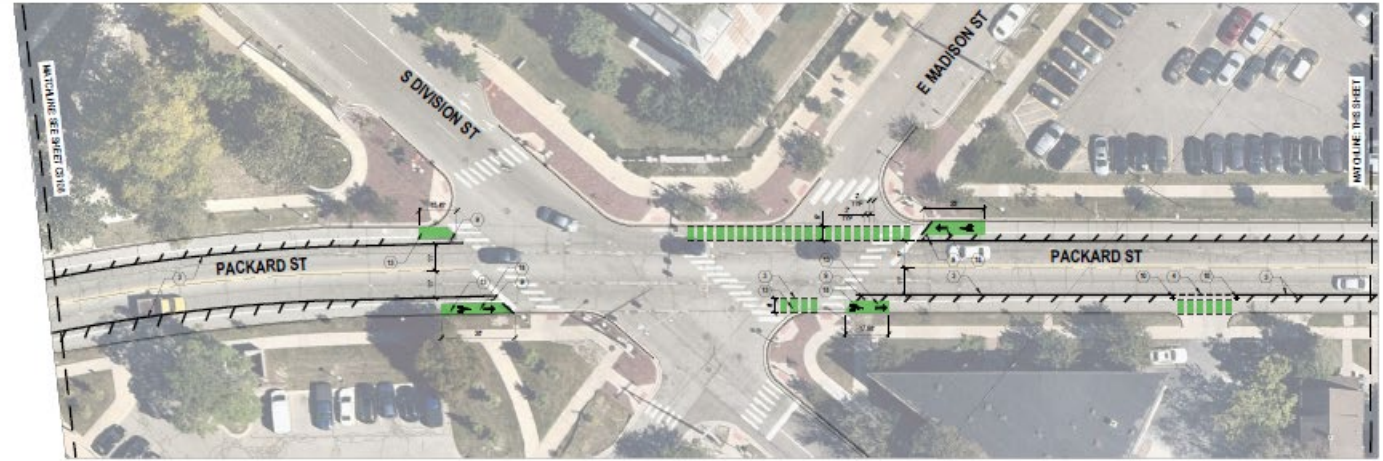
- Volume of crashes
- Crashes involving bicyclists

## Objectives

- Reduce vehicle speeds
- Increase comfort and visibility of bicyclists

## Strategies

- Bike thru-intersection markings
- Bike lane “gateways”





# Washington Street (Main – Fletcher)

## Primary safety concerns

- Crashes involving pedestrians
- Head On – Left Turn crashes
- Volume of crashes

## Objectives

- Increase visibility of pedestrians
- Reduce turning speeds
- Simplify traffic patterns

## Strategies

- Removal of turn lanes / change of traffic patterns
- Paint/post bump-outs

