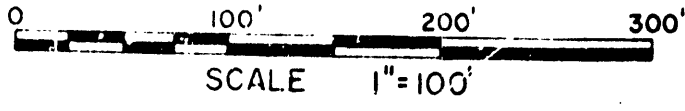


FOR RECORD
 MAR 13 3 26 PM '67
 PATRICIA NEWKIRK HANBY
 REGISTER OF DEEDS
 WASHTENAW COUNTY, MICH
 Liber 18 of Plate
 on Pages 39 and 40

ORIGINAL

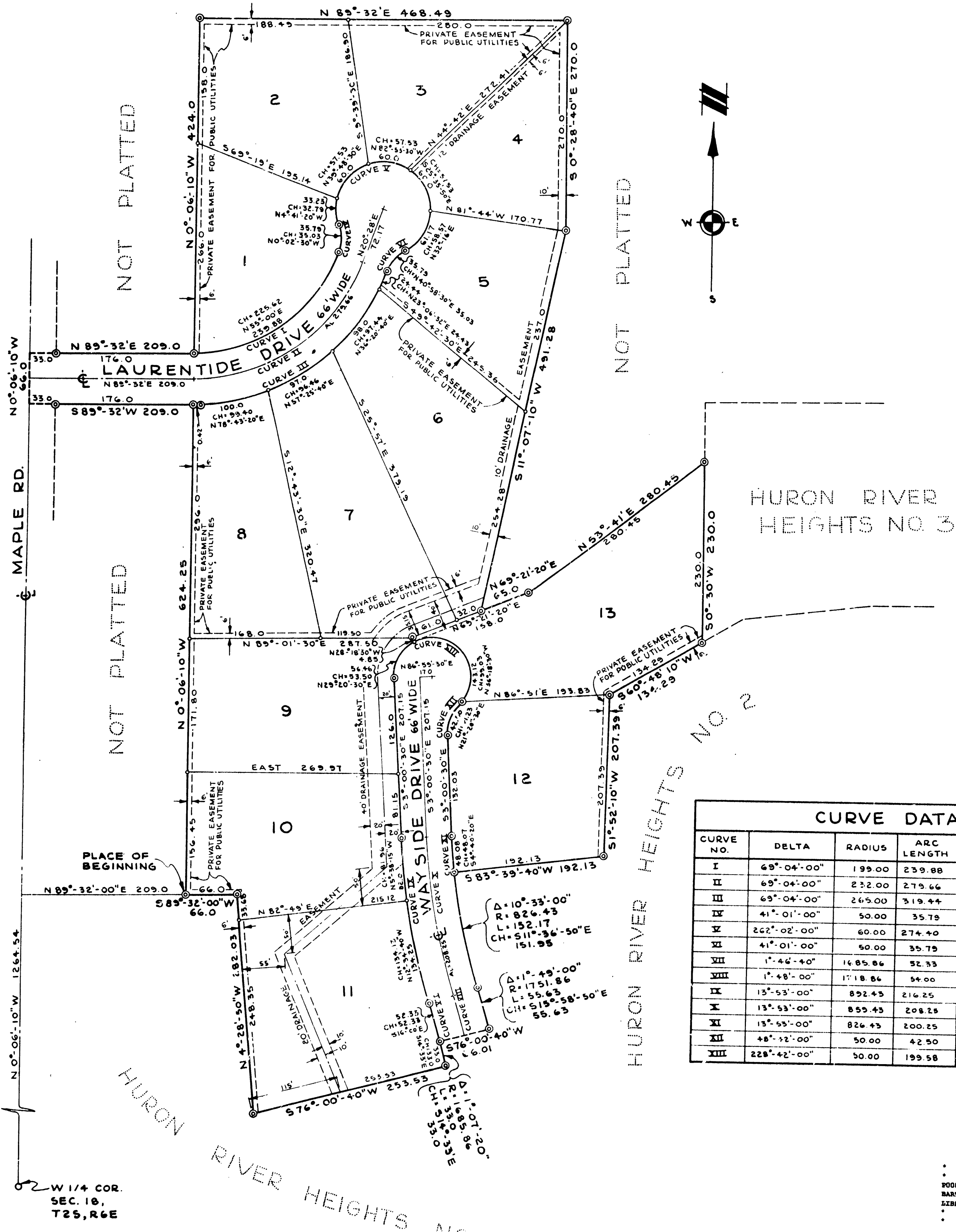
BARTON PLATEAU

A SUBDIVISION OF PART OF THE NW 1/4 OF SECTION 18, T2S,
 R6E, ANN ARBOR TOWNSHIP, WASHTENAW COUNTY, MICHIGAN



ALL DIMENS. NS IN FEET AND DECIMALS THEREOF
 ALL DIMENSIONS ON CURVES ARE ARC LENGTHS
 PREPARED AND DRAFTED BY ATWELL-HICKS, INC.
 114 NORTH FIRST ST. ANN ARBOR, MICHIGAN

NOT PLATTED



W 1/4 COR.
 SEC. 18,
 T2S, R6E

RECEIVED
 FOR RECORD
 MAR 13 3 26 PM '67
 PATRICIA NEWKIRK HANBY
 REGISTER OF DEEDS
 WASHTENAW COUNTY, MICH

See Liber 1193, page 44.

Liber 18 of Plate Page 39

CURVE DATA

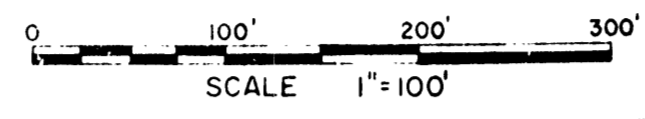
CURVE NO.	DELTA	RADIUS	ARC LENGTH	CHORD BEARING	CHORD LENGTH
I	69°-04'-00"	199.00	239.88	N 55°-00'-00"E	225.62
II	69°-04'-00"	232.00	279.66	N 55°-00'-00"E	265.03
III	69°-04'-00"	265.00	319.44	N 55°-00'-00"E	300.45
IV	41°-01'-00"	50.00	35.79	N 0°-02'-30"W	35.03
V	262°-02'-00"	60.00	274.40	S 69°-32'-00"E	90.54
VI	41°-01'-00"	50.00	35.79	N 40°-58'-30"E	35.03
VII	1°-46'-40"	1485.86	32.33	S 16°-00'-00"E	52.33
VIII	1°-48'-00"	1718.86	34.00	S 15°-59'-30"E	54.00
IX	13°-53'-00"	892.43	216.25	S 9°-57'-00"E	215.72
X	13°-53'-00"	855.43	208.25	S 9°-57'-00"E	207.74
XI	13°-53'-00"	826.43	200.25	S 9°-57'-00"E	199.76
XII	+8°-12'-00"	50.00	42.50	N 21°-20'-30"W	41.23
XIII	228°-42'-00"	50.00	199.58	S 68°-35'-30"W	91.10

FOR RECORD
MAR 13 3 25 PM '67
PATRICIA NEWKIRK HARDY
REGISTER OF DEEDS
WASHTENAW COUNTY, MICH
Liber 18 of Plats
on Pages 39 and 40

ORIGINAL

BARTON PLATEAU

A SUBDIVISION OF PART OF THE NW 1/4 OF SECTION 18, T2S, R6E, ANN ARBOR TOWNSHIP, WASHTENAW COUNTY, MICHIGAN



ALL DIMENSIONS IN FEET AND DECIMALS THEREOF
ALL DIMENSIONS ON CURVES ARE ARC LENGTHS
PREPARED AND DRAFTED BY ATWELL-HICKS, INC.
114 NORTH FIRST ST. ANN ARBOR, MICHIGAN

DEDICATION

KNOW ALL MEN BY THESE PRESENTS, that we, Donald T. Cunningham and Virginia H. Cunningham his wife, David C. English and Grace L. English his wife, Irving H. Reimer and Helen W. Reimer his wife as proprietors, have caused the land embraced in the annexed plat to be surveyed, laid out and platted to be known as BARTON PLATEAU a subdivision of part of the NW 1/4 of Section 18, T2S, R6E, Ann Arbor Township, Washtenaw County, Michigan and that the Drives and Road as shown on said plat are hereby dedicated to the use of the public and the easements indicated on said plat are not dedicated to the public but reserved for public utilities and any other use designated hereon and no permanent structures are to be located within said easement.

Signed in the Presence of:

Sheila Fawn LaDux
Sheila Fawn LaDux, Witness
Barbara J. Gordon
Barbara J. Gordon, Witness

Donald T. Cunningham
Donald T. Cunningham
1241 S. Maple Road
Ann Arbor, Michigan

Virginia H. Cunningham
Virginia H. Cunningham
1241 S. Maple Road
Ann Arbor, Michigan

David C. English
David C. English
1699 Broadway
Ann Arbor, Michigan

Grace L. English
Grace L. English
1699 Broadway
Ann Arbor, Michigan

Irving H. Reimer
Irving H. Reimer
2374 Blueberry Lane
Ann Arbor, Michigan

Helen W. Reimer
Helen W. Reimer
2374 Blueberry Lane
Ann Arbor, Michigan

ACKNOWLEDGMENT

STATE OF MICHIGAN)
) ss.
County of Washtenaw)

On this 28th day of November, A. D., 1966 before me, a Notary Public in and for said County, personally came the above named Donald T. Cunningham and Virginia H. Cunningham his wife, David C. English and Grace L. English his wife, Irving H. Reimer and Helen W. Reimer his wife, known to me to be the persons who executed the above dedication, and acknowledged the same to be their free act and deed.

Barbara J. Gordon
Barbara J. Gordon
Notary Public, Washtenaw County, Michigan
My Commission expires July 27, 1968...

DESCRIPTION OF LAND PLATTED

The land embraced in the annexed plat of BARTON PLATEAU a subdivision of part of the NW 1/4 of Section 18, T2S, R6E, Ann Arbor Township, Washtenaw County, Michigan is described as follows:
Commencing at the West 1/4 corner of Section 18, T2S, R6E, Ann Arbor Township, Washtenaw County, Michigan; thence along the west line of said section, N 0° -06' -10" W 1264.54 feet; thence N 89° -32' -00" E 209.0 feet for a PLACE OF BEGINNING; thence N 0° -06' -10" W 624.25 feet; thence S 89° -32' W 209.0 feet; thence along the west line of said section, N 0° -06' -10" W 66.0 feet; thence N 89° -32' E 209.0 feet; thence N 0° -06' -10" W 424.0 feet; thence N 89° -32' E 468.49 feet; thence S 0° -26' -40" E 270.0 feet; thence S 11° -07' -10" W 491.28 feet; thence N 69° -21' -20" E 65.0 feet; thence N 53° -41' E 280.45 feet; thence S 0° -30" W 230.0 feet; thence S 60° -48' -10" W 134.29 feet; thence S 1° -52' -10" W 207.39 feet; thence S 83° -39' -40" W 192.13 feet; thence Southerly 152.17 feet along the arc of a circular curve concave to the East, radius 826.43 feet, chord S 15° -58' -50" E 55.63 feet; thence S 76° -00' -40" W 66.01 feet; thence Southerly 33.0 feet along the arc of a circular curve concave to the West, radius 1685.86 feet, chord S 14° -33' E 33.0 feet; thence S 76° -00' -40" W 253.53 feet; thence N 4° -28' -50" W 282.03 feet; thence S 89° -32' W 66.0 feet to the Place of Beginning, being a part of the NW 1/4 of Section 18, T2S, R6E, Ann Arbor Township, Washtenaw County, Michigan, containing 13 lots numbered 1 through 13 inclusive.

CERTIFICATE OF MUNICIPAL APPROVAL

This plat was approved by the Township Board of the Township of Ann Arbor at a meeting held... 1-9-67... and is in compliance with Section 19a and that the width of lots conforms with requirements of Section 30, Act 172, of 1929 as amended.

Laurance Frederick
Laurance Frederick, Clerk

APPROVAL BY COUNTY PLANNING COMMISSION

This plat was approved by the Washtenaw County Metropolitan Planning Commission at a meeting held on the... day of... 1966...

John R. Meadows
John R. Meadows, Acting Chairman
Cecil O. Creal
Cecil O. Creal, Secretary-Treasurer
Eugene Kramer
Eugene Kramer, Director

APPROVAL BY BOARD OF COUNTY ROAD COMMISSIONERS

This plat has been examined and was approved on the... day of... 1967, by the Washtenaw County Board of Road Commissioners.

Raymond L. Koch
Raymond L. Koch, Chairman
Don A. Weir
Don A. Weir, Vice-Chairman
H. L. Frisinger
H. L. Frisinger, Member

COUNTY TREASURER'S CERTIFICATE

I hereby certify, that there are no tax liens or titles held by the State on the lands described hereon, and that there are no tax liens or titles held by individuals on said lands for the five years preceding the... day of... 1967, and that the taxes for said period of five years are all paid, as shown by the records of this office.
This certificate does not apply to taxes, if any, now in process of collection by township, city or village collecting officer.

Sylvester A. Leonard
Sylvester A. Leonard, County Treasurer

APPROVAL BY COUNTY PLAT BOARD

This plat was approved on the... day of... 1967, by the Washtenaw County Plat Board.

Patricia Newkirk Hardy
Patricia Newkirk Hardy
County Register of Deeds
John H. Flook
John H. Flook
County Drain Commissioner
J. Martin Rempp
J. Martin Rempp
Auditor
Herbert G. Loeffler
Herbert G. Loeffler
Auditor
John P. Cook
John P. Cook
Auditor

SURVEYOR'S CERTIFICATE

I hereby certify that the plat hereon delineated is a correct one and that permanent metal monuments consisting of iron rods at least one half inch in diameter and thirty-six inches in length encased in concrete cylinder at least four inches in diameter and thirty-six inches in length have been placed at all points marked thus "©" as thereon shown at all angles in the boundary of the plat, at the intersection of lines of streets, and at the intersection of the lines of streets with the boundaries of the plat as shown on said plat.

Robert J. Jagow
Robert J. Jagow
Registered Surveyor No. 6998
114 N. First Street, Ann Arbor, Michigan

Richard H. Jones

FO086002 2 OF 2
BARTON PLATEAU
LIBER 18 PAGE 39-40 03/13/1967

Liber 18 of Plats Page 40

RECEIVED
FOR RECORD
MAR 13 3 25 PM '67
REGISTER OF DEEDS
WASHTENAW COUNTY, MICH