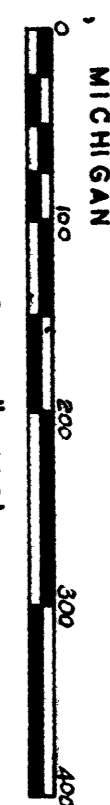


ASSESSOR'S PLAT No 39

PART OF THE WEST 1/2 SECTION 34 TOWN 2 SOUTH,
RANGE 6 EAST CITY OF ANN ARBOR, WASHINGTON
COUNTY, MICHIGAN

SCALE 1" = 100'

ALL DIMENSIONS IN FEET AND DECIMALS THEREOF
ALL CURVE DIMENSIONS ARE ARC LENGTHS

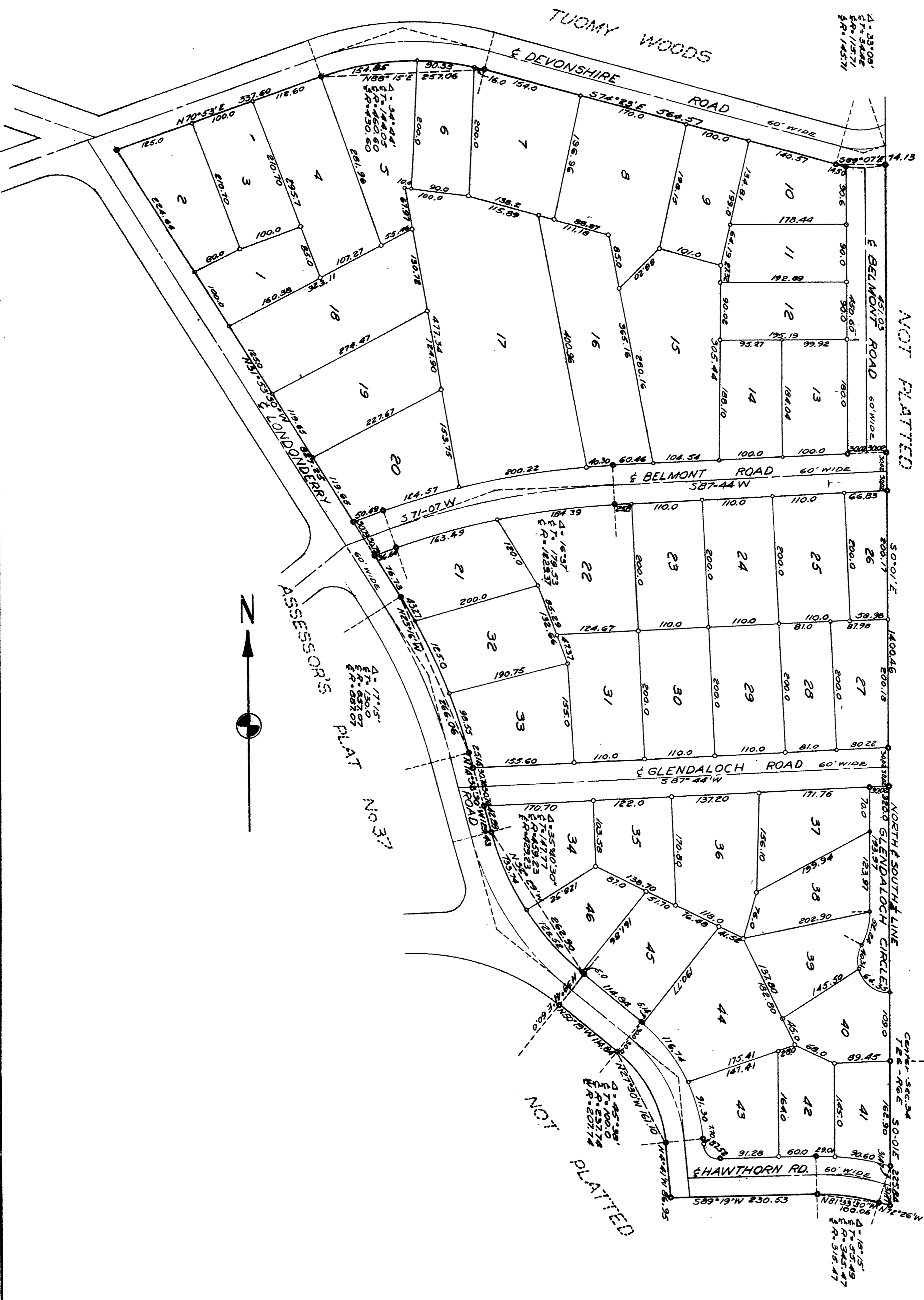


SHEET 1 OF 2

SURVEY BY ATWELL-HICKS INC.

ANN ARBOR

ANN HILLS



ASSESSOR'S PLAT No 39

PART OF THE WEST 1/2 SECTION 34 TOWN 2 SOUTH,
RANGE 6 EAST CITY OF ANN ARBOR, WASHTENAW
COUNTY, MICHIGAN

SHEET 2 OF 2



SCALE 1" = 100'
ALL DIMENSIONS IN FEET AND DECIMALS THEREOF
ALL CURVE DIMENSIONS ARE ARC LENGTHS

SURVEY BY ATWELL - HICKS INC.
ANN ARBOR

DEDICATION

KNOW ALL MEN BY THESE PRESENTS, That I, Curt H. Will
Assessor of the City of Ann Arbor
of Washtenaw County, State of Michigan, by virtue of authority
in me vested by Section 51, Act 172, of 1929, having been duly authorized by the
City Council
have caused the land described in the annexed plat to be surveyed, laid out and platted,
to be known as ASSESSOR'S PLAT NO. 39, part of the West
1/2, Section 34, Town 2 South, Range 6 East, City of Ann
Arbor, Washtenaw County, Michigan

and that the streets and alleys as shown on said plat are now being used for such
purposes.

Robert J. Jasow
ROBERT J. JASOW (Witness)

Fred J. Looker
FRED J. LOOKER (Witness)
Curt H. Will (Seal)
Assessor of the city
Ann Arbor..

DESCRIPTION OF LAND PLATTED

The land embraced in the annexed plat of ASSESSOR'S PLAT NO. 39..
part of the West 1/2, Section 34, Town 2 South, Range 6
East, City of Ann Arbor, Washtenaw County, Michigan...

is described as follows: Beginning at the center of Section 34, Town
2 South Range 6 East, City of Ann Arbor, Washtenaw County,
Michigan; thence along the North and South quarter line S 0°
01' E 225.84 feet; thence N 72° 26' W 19.02 feet; thence along
the arc of a circular curve concave to the South of radius
315.47 feet subtended by a chord which bears N 81° 33' 30"
W 100.06 feet; thence S 89° 19' W 230.53 feet; thence N 4° 41'
W 86.95 feet; thence along the arc of a circular curve concave
to the Southwest of radius 207.74 feet subtended by a chord
which bears N 27° 30' W 161.10 feet; thence N 50° 19' W 114.84
feet; thence N 39° 41' E 60.0 feet; thence along the arc of a
circular curve concave to the Northeast of radius 429.23 feet
subtended by a chord which bears N 32° 29' W 262.90 feet;
thence N 14° 38' 30" W 129.43 feet; thence along the arc of a
circular curve concave to the Southwest of radius 887.07 feet
subtended by a chord which bears N 23° 16' W 266.06 feet;
thence N 31° 53' 30" W 827.25 feet; thence N 70° 53' E 337.60
feet; thence along the arc of a circular curve concave to the
South of radius 430.60 feet subtended by a chord which bears
N 88° 15' E 257.06 feet; thence S 74° 23' E 564.57 feet;
thence along the arc of a circular curve concave to the North
of radius 145.71 feet subtended by a chord which bears S 89°
07' E 74.13 feet; thence along the North and South quarter
line of said Section 34, S 0° 01' E 1400.46 feet to the place
of beginning.

SURVEYOR'S CERTIFICATE

I hereby certify that the plat hereon delineated is a correct one and that permanent
metal monuments consisting of bars not less than one-half inch in diameter and 48 inches
in length, or shorter bars of not less than one-half inch in diameter lapped over each
other at least 6 inches with an over-all length of not less than 48 inches, encased in a
concrete cylinder of at least 4 inches in diameter and 48 inches in depth have been placed
at points marked thus (O) as thereon shown at all angles in the boundaries of the
land platted, at all the intersections of streets, intersections of alleys, or of streets and
alleys, and at the intersections of streets and alleys with the boundaries of the plat as
shown on said plat.

Herbert S. Hicks
Registered Land Surveyor
Herbert S. Hicks, No. 1715

CERTIFICATE OF APPROVAL BY THE CITY PLANNING COMMISSION

This plat was approved by the Planning Commission of the City of Ann
Arbor, Michigan, at a meeting held on the 26 day
of OCTOBER 1954.

John E. Swisher, Jr. (Chairman)
Sybil K. Bennet (Secretary)

ACKNOWLEDGMENT

STATE OF MICHIGAN }
County of Washtenaw } ss.

On this 16 day of October, A.D. 1954,
before me, a Notary Public in and for said county, personally came the above named
Curt H. Will, Assessor of
the City of Ann Arbor, known to me to be the
person who executed the above dedication, and acknowledged the same to be his free
act and deed as such

Fred J. Looker
FRED J. LOOKER
Notary Public in and for Washtenaw County.
My Commission expires May 7, 1956.

APPROVAL BY COUNTY PLAT BOARD

This plat was approved on the 9th day of
December 1954 by the
Washtenaw County Plat Board

Thomas A. FitzGerald (County Register of Deeds)
J. Martin Rempp (Auditor)
Adolph F. Gross (Auditor)
Herbert G. Loeffler (Auditor)

MUNICIPAL APPROVAL

This plat was approved by the Board of Public Works of the City of
Ann Arbor, Michigan, at a meeting held on the 3rd day
of December 1954.

Fred J. Looker (Clerk)

MUNICIPAL APPROVAL

This plat was approved by the Common Council
of the City of Ann Arbor
at a meeting held November 15, 1954

Fred J. Looker (Clerk)

COPY
Register's Office
Washtenaw County, } ss.
Plat of Assessor's Plat No 39
City of Ann Arbor
was recorded this 30th day of
December, A.D., 1954, at 9⁵⁵ o'clock
A.M. in Liber 12 of Plats
on Page 367
Thomas A. FitzGerald
Register of Deeds

I hereby certify this copy is a true copy of map or
plat forwarded the Register of Deeds for recording.
Date December 28, 1954
Filed in Auditor General's Dept.
Date January 11, 1955
Examined and approved
Date December 28, 1954
Violet Bergman
Auditor General
By [Signature]
Plat Engineer