

WESTPORT HEIGHTS SUBDIVISION

ORIGINAL

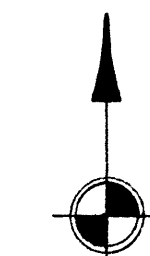
A SUBDIVISION OF

PART OF THE SOUTHWEST 1/4 OF THE
NORTHEAST 1/4 AND PART OF THE
NORTHWEST 1/4 OF THE SOUTH-
EAST 1/4 OF SECTION 19, TOWN
2 SOUTH, RANGE 6 EAST,
CITY OF ANN ARBOR,
WASHTENAW COUNTY,
MICHIGAN.



SURVEY BY
ATWELL-HICKS, INC.

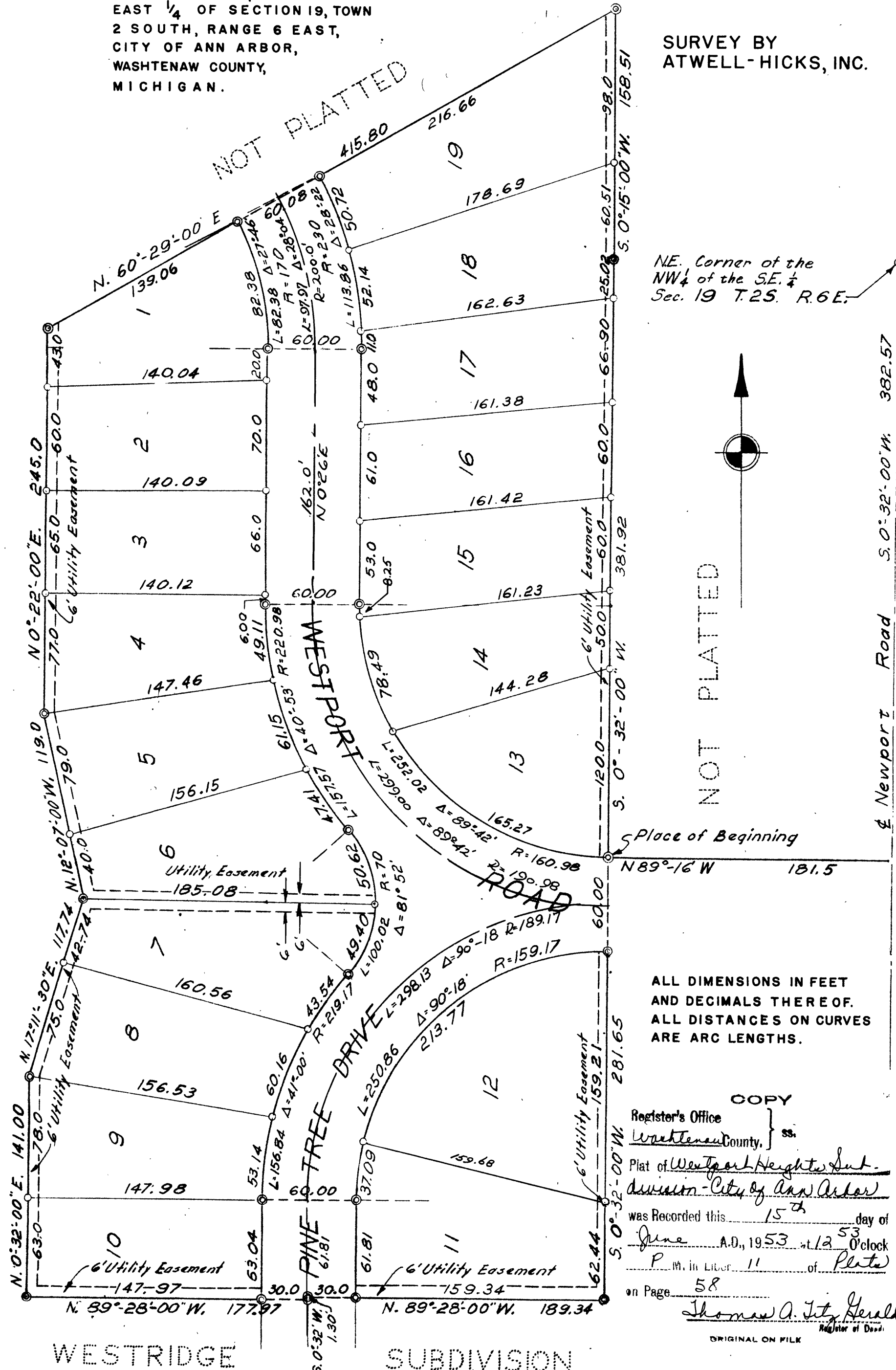
NE. Corner of the
NW 1/4 of the SE 1/4
Sec. 19 T.2S. R.6E.



NOT PLATTED

NOT PLATTED

NOT PLATTED



ALL DIMENSIONS IN FEET
AND DECIMALS THEREOF.
ALL DISTANCES ON CURVES
ARE ARC LENGTHS.

COPY
Register's Office
Washtenaw County, ss.
Plat of Westport Heights Sub-
division - City of Ann Arbor
was Recorded this 15th day of
June A.D., 1953 at 12:53 o'clock
P.M. in Liber 11 of Plats
on Page 58
Thomas A. Fitzgerald
Register of Deeds

DEDICATION

KNOW ALL MEN BY THESE PRESENTS, that we, NEIL O. STAEBLER, ...
DOING BUSINESS UNDER THE ASSUMED NAME OF
STAEBLER AND SON, EDWARD C. BLISKA, AND VIRGINIA
T. BLISKA, HIS WIFE, ...
as proprietors, have caused the land embraced in the annexed plat to be surveyed,
laid out and platted, to be known as "WESTPORT HEIGHTS", A SUB-
DIVISION OF PART OF THE SOUTHWEST 1/4 OF THE SOUTH-
EAST 1/4 AND PART OF THE NORTHWEST 1/4 OF THE SOUTH-
EAST 1/4 OF SECTION 19, TOWN 2 SOUTH, RANGE 6 ...
EAST 1/4 OF SECTION 19, TOWN 2 SOUTH, RANGE 6 ...
AND THAT THE ROAD AND DRIVE as shown on said plat are
hereby dedicated to the use of THE PUBLIC.

Signed and Sealed in
the Presence of:
Alice Mott (Witness) Neil O. Staebler (L.S.)
Kenneth Heining (Witness) Edward C. Bliska (L.S.)
Virginia T. Bliska (L.S.)

ACKNOWLEDGMENT

STATE OF MICHIGAN } ss.
County of WASHTENAW }
On this 19th day of MAY, 1953, before me,
a Notary Public in and for said County, personally came the above named ...
NEIL O. STAEBLER, EDWARD C. BLISKA AND VIRGINIA
T. BLISKA, HIS WIFE, ...
known to me to be the persons who executed the above dedication, and acknowledged
the same to be their free act and deed.
Notary Public: W. F. VERNER
My Commission expires: 1-13-57

SURVEYOR'S CERTIFICATE

I hereby certify that the plat hereon delineated is a correct one and that permanent
metal monuments consisting of bars not less than one-half inch in diameter and 48 inches
in length, or shorter bars of not less than one-half inch in diameter lapped over each
other at least 6 inches with an over-all length of not less than 48 inches, encased in a
concrete cylinder at least 4 inches in diameter and 48 inches in depth have been placed
at points marked thus () as thereon shown on all angles in the boundaries of the
land platted, at all the intersections of streets, intersections of alleys, or of streets and
alleys, and at the intersections of streets and alleys with the boundaries of the plat as
shown on said plat.
Registered Land Surveyor or Registered Professional Engineer
HERBERT S. HICKS No. 1715

DESCRIPTION OF LAND PLATTED

The land embraced in the annexed plat of "WESTPORT HEIGHTS", A ...
SUBDIVISION OF PART OF THE SOUTHWEST 1/4 OF THE ...
NORTHWEST 1/4 AND PART OF THE NORTHWEST 1/4 OF THE ...
SOUTHWEST 1/4 OF SECTION 19, TOWN 2 SOUTH, RANGE 6 ...

EAST, CITY OF ANN ARBOR, WASHTENAW COUNTY, MICHIGAN
IS DESCRIBED AS FOLLOWS:

COMMENCING AT THE NORTHEAST CORNER OF THE
NORTHWEST 1/4 OF THE SOUTHWEST 1/4 OF SECTION 19, TOWN
2 SOUTH, RANGE 6 EAST, ANN ARBOR TOWNSHIP, WASHTEN-
AW COUNTY MICHIGAN; THENCE S 0°32' 00" W ALONG THE
CENTER LINE OF NEWPORT ROAD AND THE EAST LINE OF THE
NORTHWEST 1/4 OF THE SOUTHWEST 1/4 OF SAID SECTION 382.
57 FEET; THENCE N 89°16' 00" W 181.5 FEET FOR A
PLACE OF BEGINNING; THENCE S 0°32' 00" W 281.65 FEET;
THENCE N 89°28' 00" W 189.34 FEET; THENCE S 0°32'
00" W 1.30 FEET; THENCE N 89°28' 00" W 177.97 FEET;
THENCE N 0°32' 00" E 141.00 FEET; THENCE N 17°11'
30" E 117.74 FEET; THENCE N 12°07' 00" W 119.0
FEET; THENCE N 0°22' 00" E 245.0 FEET; THENCE N 60°
29' 00" E 415.80 FEET; THENCE S 0°15' 00" W 158.51
FEET; THENCE S 0°32' 00" W 381.92 FEET TO THE PLACE
OF BEGINNING.

APPROVAL BY COUNTY PLAT BOARD

This plat was approved on the 15th day of
June, 1953, by the
Washtenaw County Plat Board
THOMAS A. FITZGERALD (County Register of Deeds)
J. MARTIN REMPP (County Auditor)
ADOLPH F. GROSS (County Auditor)
HERBERT G. LOEFFLER (County Auditor)

CERTIFICATE OF APPROVAL BY THE CITY PLANNING COMMISSION

THIS PLAT WAS APPROVED BY THE PLANNING COMMISSION OF
THE CITY OF ANN ARBOR, MICH., AT A MEETING HELD ON THE
15th DAY OF JUNE, 1953

FREDERICK N. MCOMBER (CHAIRMAN)
WILLIAM C. WALZ (SECRETARY)

MUNICIPAL APPROVAL

THIS PLAT WAS APPROVED BY THE BOARD OF PUBLIC WORKS OF
THE CITY OF ANN ARBOR, MICHIGAN, AT A MEETING
HELD MAY 20, 1953

FRED J. LOOKER (CLERK)

COUNTY TREASURER'S CERTIFICATE

Office of County Treasurer, ... WASHTENAW County.
I hereby certify that there are no tax liens or titles held by the State on the lands de-
scribed hereon, and that there are no tax liens or titles held by individuals on said lands,
for the five years preceding the 3rd day of
June, 1953 and that the taxes for said period of
five years are all paid, as shown by the records of this office

W. F. VERNER (County Treasurer)

MUNICIPAL APPROVAL

This plat was approved by the COMMON COUNCIL of the CITY of ANN ARBOR, MICHIGAN,
at a meeting held June 1, 1953

I hereby certify that this copy is a true copy of
the map or plat forwarded to the Register of Deeds
for recording.
Date June 12, 1953
Filed in Auditor General's Dept.
Date June 17, 1953
Examined and Approved
Date June 12, 1953
Auditor General
Fred J. Looker (Clerk)