

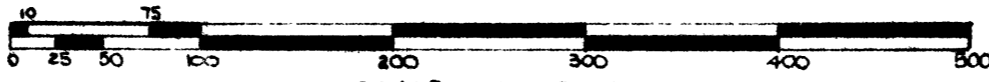
PO186001 1 OF 1
GLACIER HIGHLANDS SUBDIVISION NO 2
LIBER:16 PAGE:4 05/11/1966

GLACIER HIGHLANDS SUBDIVISION NO 2

OF PART OF W. 1/2 OF S.E. 1/4 OF SECTION 23, T.2 S., R.6 E.

PREPARED & DRAFTED BY
MASON L. BROWN & SON
INCORPORATED
CIVIL ENGINEERS & LAND SURVEYORS
120 MADISON AVENUE,
DETROIT 26, MICHIGAN.

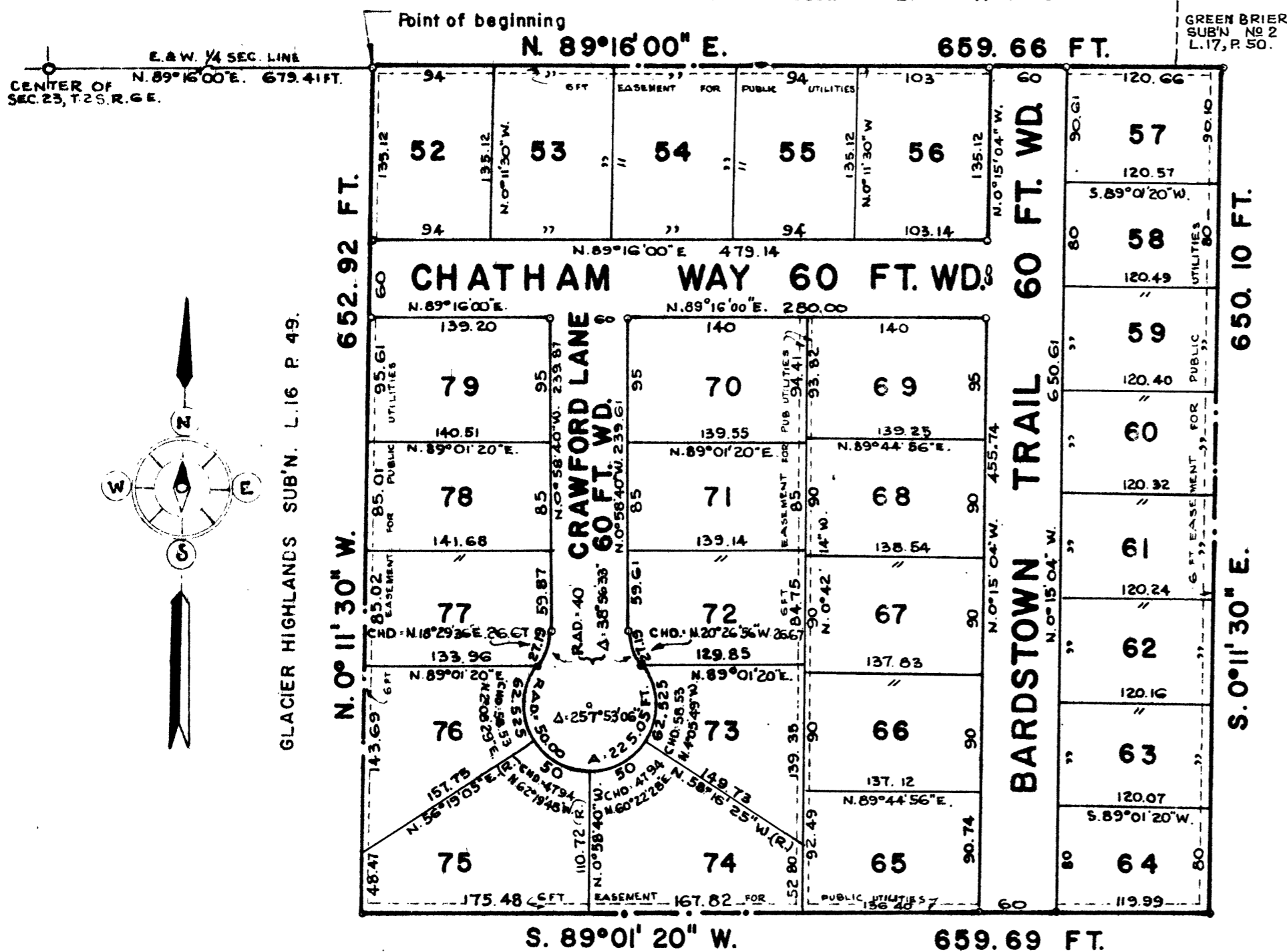
CITY OF ANN ARBOR, WASHTENAW CO., MICHIGAN.



GreenBrier Sub'n L. 17 P. 37 & 38

NOTE

DIMENSIONS HEREON ARE IN FEET AND DECIMALS THEREOF
ALL CURVILINEAR DIMENSIONS ARE SHOWN ALONG THE ARC.



GLACIER HIGHLANDS SUB'N. L. 16 P. 49.

UNPLATTED

CERTIFICATE OF APPROVAL BY THE CITY PLANNING COMMISSION

This plat was approved by the Planning Commission of the City of Ann Arbor, Michigan at a meeting held on the 11th day of JANUARY, 1966

John H. Spelman Jr.
John H. Spelman Jr. (Vice-Chairman)
Keith F. Weiland
Keith F. Weiland (Secretary)

DEDICATION

KNOW ALL MEN BY THESE PRESENTS, that we the Glacier Highlands, Inc., a Michigan Corporation, by John C. Stegeman, President and D. R. Wisely, Vice-President, as Proprietors, have caused the land embraced in the annexed plat to be surveyed, laid out and platted, to be known as "GLACIER HIGHLANDS SUBDIVISION NO. 2" of part of W. 1/2 of S.E. 1/4 of Section 23, T. 2 S., R. 6 E., City of Ann Arbor, Washtenaw Co., Michigan, and that the private easements shown on said plat are hereby reserved for public utilities and that the streets as shown on said plat are hereby dedicated to the use of the public.

WITNESSES:
Sheila S. Schnur by John C. Stegeman
SHEILA S. SCHNUR John C. Stegeman, President
2638 Bedford, Ann Arbor
Barbara T. Belle Isle by D. R. Wisely
BARBARA T. BELLE ISLE D. R. Wisely, Vice-President & Secretary
3720 Meadow Lane, Saline

APPROVAL BY COUNTY PLAT BOARD

This plat was approved on the 5th day of April, 1966 by the Washtenaw County Plat Board.

Patricia Newkirk Hardy
Patricia Newkirk Hardy (County Register of Deeds)
John Flook
John Flook (County Drain Commissioner)
J. Martin Rempff
J. Martin Rempff (Auditor)
John P. Cook
John P. Cook (Auditor)
Herbert G. Loeffler
Herbert G. Loeffler (Auditor)

ACKNOWLEDGMENT

State of Michigan) ss.
County of Washtenaw)

On this 24th day of November, 1965, before me, a Notary Public in and for said County, appeared John C. Stegeman, President and D. R. Wisely, Vice-President, to me personally known who being each by me duly sworn, did say that they are the President and Vice-President, respectively of Glacier Highlands, Inc., a Michigan Corporation, and that said instrument was signed in behalf of said Corporation by authority of its Board of Directors, and the said John C. Stegeman and D. R. Wisely, acknowledged said instrument to be the free act and deed of said Corporation.

My commission expires Sheila S. Schnur
SHEILA S. SCHNUR, Notary Public
Washtenaw County, Michigan
My Commission Expires: 3-8-69

DESCRIPTION

The land embraced in the annexed plat of "GLACIER HIGHLANDS SUBDIVISION NO. 2" of part of W. 1/2 of S.E. 1/4 of Section 23, T. 2 S., R. 6 E., City of Ann Arbor, Washtenaw Co., Michigan and comprised of Lots 52 to 79 inclusive is described as follows: Beginning at a point in the East and West 1/4 line of said Section 23 which point is distant N. 89°16'00" E. 679.41 ft. from the center post of said Section 23; thence along said E. and W. 1/4 Section Line, being also the Southerly line of Green Brier Subdivision (Recorded in Liber 17, Pages 37 and 38 of Plats, Washtenaw County Records) N. 89°16'00" E. 659.66 ft.; thence S. 0°11'30" E. 650.10 ft.; thence along the Northerly and Easterly line of GLACIER HIGHLANDS SUBDIVISION (Recorded in Liber 16, Page 49 of Plats, Washtenaw County Records) S. 89°01'20" W. 659.69 ft. and N. 0°11'30" W. 652.92 ft. to the point of beginning.

COPY
Register's Office
Washtenaw County, Mich.
Plat of Glacier Highlands
Subdivision No. 2
was recorded on 11th day of May
A. D., 1966 at 10:40 o'clock
A. M. in Liber 18 of Plats
on Page 4
Patricia Newkirk Hardy
Register of Deeds
ORIGINAL ON FILE By Dep.

CERTIFICATE OF MUNICIPAL APPROVAL

I hereby certify that this plat has been approved by the City Council of the City of Ann Arbor at a regular meeting, held January 31, 1966 and is in compliance with Sec. 19a and that the width of lots is in compliance with requirements of Sec. 30, Act 172 of 1929, as amended.

John P. Bentley
JOHN P. BENTLEY, City Clerk

TAX CERTIFICATE OFFICE OF THE COUNTY TREASURER, WASHTENAW COUNTY, MICHIGAN

I hereby certify, That there are no tax liens or titles held by the State on the lands described above and that there are no tax liens or titles held by individuals on said lands, for the five years preceding the 5 day of April, 1966 and that the taxes for said period of five years are paid, as shown by the records of this office. This certificate does not apply to taxes, if any, now in process of collecting for Township, City or Village collecting officers.

Sylvester A. Leonard
Sylvester A. Leonard (County Treasurer)

SURVEYORS CERTIFICATE

I hereby certify that the Plat hereon delineated is a correct one, and that permanent metal monuments consisting of iron rods not less than one-half inch in diameter and 36-inches in length, encased in concrete cylinders 4-inches in diameter and 36-inches in length, have been set at points marked thus (o) as thereon shown at all angles in the boundaries of the land platted, at all intersections of the lines of streets, and at intersections of the lines of streets with the boundaries of the Plat.

William G. Carlson
WILLIAM G. CARLSON
Registered Land Surveyor No 14759
120 MADISON AVE., DETROIT 26, MICH.

I hereby certify this copy is a true copy of map or plat forwarded the Registrar of Deeds for recording.
Date May 10, 1966
FILED IN DEPT. OF TREASURY
Date May 13, 1966
EXAMINED AND APPROVED
Date May 10, 1966
Aurora Green
AURORA GREEN
STATE CLERK
Richard C. Jordan
RICHARD C. JORDAN
Clerk of the Board of Commissioners