

# PACKARD HILLS SUBDIVISION OF PART OF NE 1/4 SEC. 4, T. 3 S., R. 6 E. PITTSFIELD TOWNSHIP WASHTENAW COUNTY, MICH.

RECORDED IN THE REGISTER'S OFFICE OF WASHTENAW COUNTY, MICHIGAN, ON THE FIRST DAY OF OCTOBER 1924 AT 10:30 O'CLOCK A.M. IN PLAT NO. 15 OF LIBER 6.

*Aug 20 1928*  
*John A. Munnings*

## DEDICATION

Know All Men By These Presents that we *Joseph B. Stearns* and *F. L. E. Stearns* his wife; and *George E. Colburn* and *Allie W. Colburn* his wife, as proprietors have caused the land embraced in the annexed plat to be surveyed, laid out and platted and known as PACKARD HILLS SUBDIVISION of part of NE 1/4 of Sec. 4, T. 3 S., R. 6 E., Pittsfield Township, Washtenaw County, Michigan, and that the streets as shown on said plat are hereby dedicated to the use of the public.

Signed and Sealed in the Presence of  
*Hugo Mann* (LS)  
*Joseph B. Stearns* (LS)  
*George E. Colburn* (LS)  
*Allie W. Colburn* (LS)

STATE OF MICHIGAN }  
COUNTY OF WASHTENAW } SS

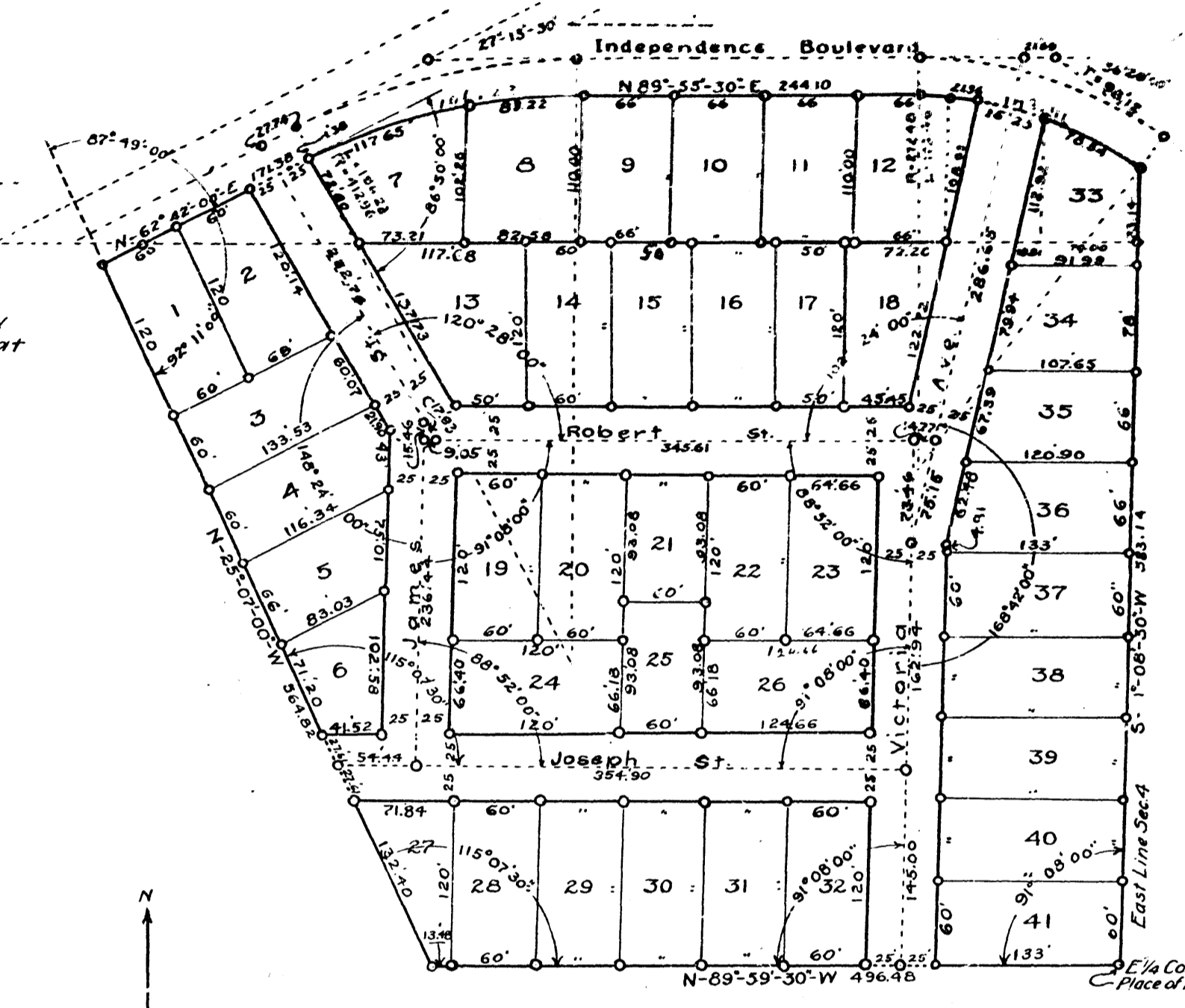
On this *twentieth* day of *August*, 1928 before me a Notary Public in and for said county, personally came the above named *Joseph B. Stearns* and *George E. Colburn* who are known to me to be the persons who executed the above dedication and acknowledged the same to be their free act and deed.

*Hugo Mann*  
Notary Public, Washtenaw Co., Mich.  
My commission expires *March 16, 1928*

## CERTIFICATES OF APPROVAL

This plat was examined and approved at a meeting of the Board of County Auditors of Washtenaw County, Michigan, on the *17th* day of *August*, 1928.  
Chairman *Walter W. Fowler* (LS)  
Board of County Auditors *W. S. Haun* (LS)  
*Edward J. Brown* (LS)

This plat was examined and approved at a Board meeting of the Board of Supervisors of the Township of Pittsfield, Washtenaw County, Michigan, on the *19th* day of *August*, 1928.  
*Arthur K. Krueger*  
Clerk



## TAX CERTIFICATE

OFFICE OF COUNTY TREASURER,  
WASHTENAW COUNTY, MICHIGAN

I hereby certify that there are *no* tax liens or titles held by the State on the land described below, and that there are *no* tax liens or titles held by individuals on said lands, and that the taxes on said lands for the five years preceding the *1st* day of *August*, 1928 are fully paid, as shown by the records of this office.  
*Matth E. Olson*  
County Treasurer.

## SURVEYORS CERTIFICATE

I hereby certify that the plat hereon delineated is a correct one, and that permanent monuments consisting of *1/2* and *3/4* inch iron pipes 30 inches in length have been planted at points marked thus as thereon shown at all angles in the boundaries of the land platted and at all intersection of streets.  
*W. W. Munnings*  
Registered Civil Engineer.

## DESCRIPTION

The Land embraced in the annexed plat of "PACKARD HILLS SUBDIVISION" of Part of NE 1/4 Sec. 4, T. 3 S., R. 6 E., Pittsfield Township, Washtenaw County, Michigan, is described as follows; Beginning at an iron pipe marking the E 1/4 Corner Sec. 4 running thence N 89° 59' 30" E, 496.48 feet to an iron pipe; thence, N 25° 07' 00" W, 564.82 feet to an iron pipe; thence, N 62° 42' 00" E, 171.38 feet to an iron pipe, marking the point of a curve; thence, in the Arc of a circular curve, to the right, of radius 412.96 feet, thru a central angle of 27° 13' 30" to an iron pipe marking a point of tangency; thence, N 89° 55' 30" E, 244.10 feet to an iron pipe marking the point of a curve; thence, in the Arc of a circular curve, to the right, of radius 272.48 feet, thru a central angle of 36° 29' 00" to an iron pipe; thence, S 1° 08' 30" W, 583.14 feet to the Place of Beginning.

## CERTIFICATE OF RECORD

REGISTER'S OFFICE }  
WASHTENAW COUNTY } SS

Received for record the *FIRST* day of *OCTOBER* 1924 at *10:30* o'clock A.M., and recorded on page *45* of Liber *6* of Plats.  
*John A. Munnings*  
Register.