

# "NORTHWOOD"

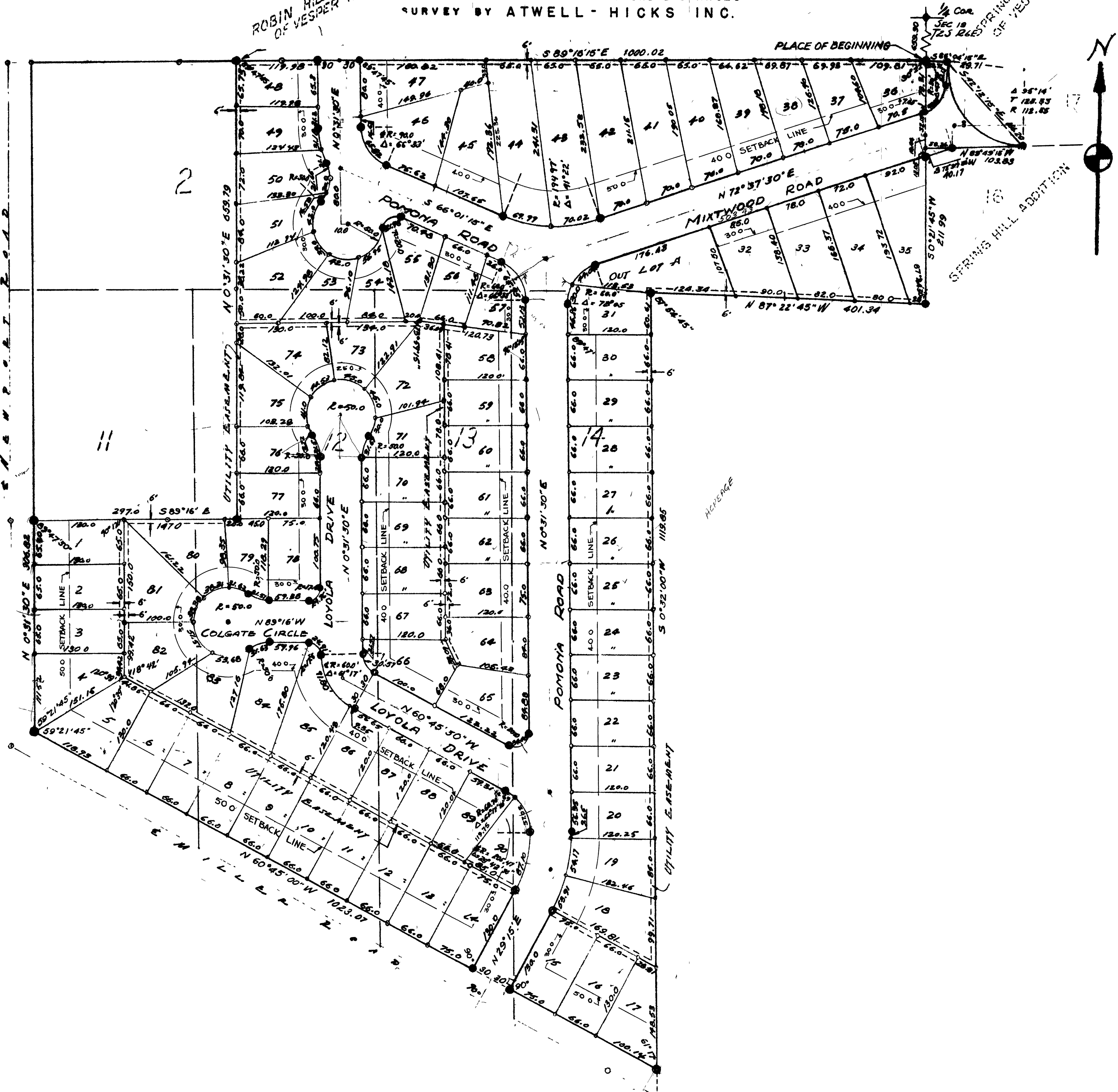
A SUBDIVISION OF  
PART OF LOTS 16 & 17 OF "SPRING HILL ADDITION" TO THE CITY OF ANN ARBOR  
AND  
PART OF LOTS 2, 11, 12, 13 & 14 OF THE PLAT OF THE S. E. 1/4 OF SECTION 19  
TOWN 2 SOUTH RANGE 6 EAST  
CITY OF ANN ARBOR WASHTENAW COUNTY MICHIGAN  
SCALE: 1" = 100'

0 100 200 300

ALL DIMENSIONS IN FEET AND DECIMALS THERE OF  
ALL CURVE DIMENSIONS ARE CHORD DISTANCES  
SURVEY BY ATWELL-HICKS INC.

ROBIN HILLS SUB.  
OF VESPER HTS.

1/4 Cor.  
SEC 19  
725 ACED  
SPRING HILL S. SUB.  
OF VESPER HTS.



# "NORTHWOOD"

A SUBDIVISION OF  
PART OF LOTS 16 & 17 OF "SPRING HILL ADDITION" TO THE CITY OF ANN ARBOR  
AND  
PART OF LOTS 2, 11, 12, 13 & 14 OF THE PLAT OF THE S. E. 1/4 OF SECTION 19  
TOWN 2 SOUTH RANGE 6 EAST  
CITY OF ANN ARBOR WASHTENAW COUNTY MICHIGAN  
SCALE: 1" = 100'



ALL DIMENSIONS IN FEET AND DECIMALS THEREOF  
ALL CURVE DIMENSIONS ARE CHORD DISTANCES  
SURVEY BY ATWELL - HICKS INC.

### DEDICATION

Know all men by these presents, that we Erwin C. Overbeck, Humbard, and Luella F. Overbeck, Wife, as proprietors, have caused the land embraced in the annexed plat to be surveyed, laid out and plat- ted, to be known as "Northwood" A Subdivision of Part of Lots 16-17 of Spring Hill Addition to the City of Ann Arbor and Part of Lots 2, 11, 12, 13 and 14 of the plat of the S. E. 1/4 of Section 19, Town 2 South, Range 6 East, City of Ann Arbor, Washtenaw County, Michigan, and that the streets and alleys as shown on said plat are hereby dedicated to the use of the Public

Signed and Sealed in the Presence of:

*Louis C. Andrews* (L.S.)  
*Erwin C. Overbeck* (L.S.)  
*Phoebe A. Eisemann* (Witness)  
*Luella F. Overbeck* (L.S.)

### ACKNOWLEDGEMENT

State of Michigan  
County of Washtenaw  
On this 21st day of February, 1952, before me, a Notary Public in and for said County, personally came the above named Erwin C. Overbeck and Luella F. Overbeck known to me to be the persons who executed the above dedication, and acknowledged the same to be their free act and deed.

*Phoebe A. Eisemann*  
Notary Public Washtenaw County

My Commission Expires Jan 10, 1956

### MUNICIPAL APPROVAL

This plat was approved by the Common Council of the City of Ann Arbor, Michigan at a meeting held March 17, 1952

*Fred J. Looker*  
Fred J. Looker (Clerk)

### DESCRIPTION OF LAND PLATTED

The land embraced in the annexed plat of "Northwood", A Subdivision of Part of Lots 16-17 of Spring Hill Addition to the City of Ann Arbor and Part of Lots 2, 11, 12, 13 and 14 of the plat of the Southeast 1/4 of Section 19, Town 2 South, Range 6 East, City of Ann Arbor, Washtenaw County, Michigan, is described as follows:

Commencing at the east 1/4 post of Section 19, Town 2 South, Range 6 East, City of Ann Arbor, Washtenaw County, Michigan, and running thence south 0°-21'-45" west 659.90 feet in the section line for a PLACE OF BEGINNING; thence south 86°-04'-15" east 29.71 feet; thence southeasterly in the arc of a circular curve concave to the northeast and having a radius of 112.55 feet, the chord of which bears south 42°-12'-15" east 166.20 feet; thence north 89°-49'-15" west 103.83 feet; thence south 72°-37'-30" west 40.17 feet; thence south 0°-21'-45" west 211.99 feet; thence north 87°-22'-45" west 401.34 feet; thence south 0°-32'-00" west 1119.85 feet to the northerly line of Miller Avenue; thence north 60°-45'-00" west in the northerly line of said Avenue 1023.07 feet to the east line of Newport Road; thence north 0°-31'-30" east in the east line of said Road 306.82 feet; thence south 89°-16'-00" east 297.00 feet; thence north 0°-31'-30" east 659.79 feet; thence south 89°-16'-15" east 1000.02 feet to the place of beginning.

### CERTIFICATE OF APPROVAL BY THE CITY PLANNING COMMISSION

This plat was approved by the Planning Commission of the City of Ann Arbor at a meeting held on the 26th day of February, 1952

*Frederick N. McOmber*  
Frederick N. McOmber (Chairman)  
*William C. Wala*  
William C. Wala (Secretary)

### SURVEYOR'S CERTIFICATE

I hereby certify that the plat hereon delineated is a correct one and that permanent metal monuments consisting of bars not less than one-half inch in diameter and 48 inches in length, or shorter bars of not less than one-half inch in diameter lapped over each other at least 6 inches with an over-all length of not less than 48 inches, encased in a concrete cylinder at least 4 inches in diameter and 48 inches in depth have been placed at points marked thus (.....) as thereon shown at all angles in the boundaries of the land platted, at all the intersections of streets, intersections of alleys, or of streets and alleys, and at the intersections of streets and alleys with the boundaries of the plat as shown on said plat.

*Herbert S. Ficks*  
Herbert S. Ficks  
Registered Land Surveyor or Registered Professional Engineer

### MUNICIPAL APPROVAL

This plat was approved by the Board of Public Works of the City of Ann Arbor at a meeting held March 6, 1952  
*Fred J. Looker*  
Fred J. Looker (Clerk)

### APPROVAL BY BOARD OF COUNTY AUDITORS

Approved by the Board of County Auditors of Washtenaw County, Michigan, this 16th day of April, 1952  
*J. Martin Rempp*  
J. Martin Rempp (Chairman)  
*Herbert G. Loeffler*  
Herbert G. Loeffler

### COUNTY TREASURER'S CERTIFICATE

Office of County Treasurer, Washtenaw County.  
I hereby certify, that there are no tax liens or titles held by the State on the lands described hereon, and that there are no tax liens or titles held by individuals on said lands, for the five years preceding the 15th day of April, 1952, and that the taxes for said period of five years are all paid, as shown by the records of this office, except

This certificate does not apply to taxes, if any, now in process of collection by township, city or village collecting officers.  
*W.F. Verner*  
W.F. Verner (County Treasurer)

COPY  
Register's Office  
Washtenaw County, ss.  
Plat of Northwood  
City of Ann Arbor  
was Recorded this 21st day of  
April, 1952 at 2:10 o'clock  
P.M. in Liber 11 of (Series)  
Page 3 and 39  
*Erwin C. Overbeck*  
*Luella F. Overbeck*  
By *P.D. Newkirk* Reg.

I HEREBY CERTIFY THAT THIS COPY IS A TRUE COPY OF THE MAP OR PLAT FORWARDED THE REGISTER OF DEEDS FOR RECORDING.

COMPILED April 24, 1952  
*Wayne Jewell Purdy*  
DEPUTY AUDITOR GENERAL  
Wayne Jewell Purdy

Examined and Approved  
April 24, 1952  
*Wayne Jewell Purdy*  
DEPUTY AUDITOR GENERAL  
Wayne Jewell Purdy

FILED IN AUDITOR GENERAL'S DEPT.

April 28, 1952  
*Wayne Jewell Purdy*  
DEPUTY AUDITOR GENERAL  
Wayne Jewell Purdy