

(COPY)

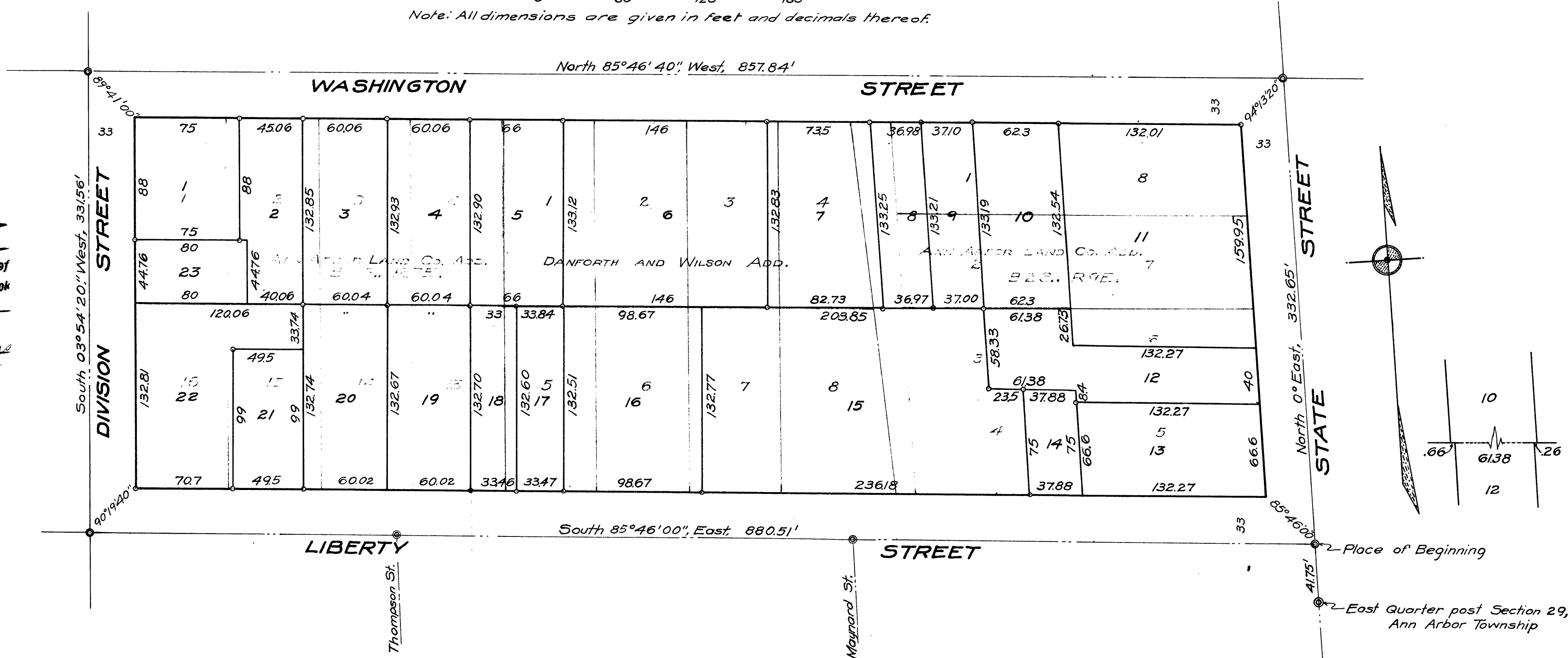
"ASSESSOR'S PLAT NO. 27"

BEING A REPLAT OF BLOCK 2 SOUTH OF HURON ST. RANGE 7 AND 9 EAST OF SECOND ST. AS SHOWN IN THE PLAT OF THE ANN ARBOR LAND CO. AND A REPLAT OF DANFORTH AND WILSON ADD. BEING A PART OF THE SOUTH ONE HALF OF THE N.E. QUARTER OF SEC. 29, TOWN 2S., RANGE 6E., MICHIGAN.

CITY OF ANN ARBOR WASHTENAW CO. MICHIGAN

Scale: One Inch = Sixty Feet
0 60 120 180

Note: All dimensions are given in feet and decimals thereof.



Examined and Approved
May 2, 1935
G. Hartman
Deputy Auditor General

I HEREBY CERTIFY THAT THIS COPY IS
A TRUE COPY OF THE MAP OR PLAT
FORWARDED THE REGISTER OF DEEDS
FOR RECORDING.
G. Hartman
Deputy Auditor General

FILED IN AUDITOR GENERAL'S DEPT
May 8, 1935
G. Hartman
Deputy Auditor General

Register's Office
Washtenaw County
Plat of Assessor's Plat No. 27
Was Recorded this 3rd day of
May, A.D. 1935 at 9 A.M. O'Clock
in Book 9 of Plats
on Page 18
John J. Cummings
Register of Deeds

1 OF 1
05/03/1935
ASSESSOR'S PLAT NO. 27
PAGE 18

DEDICATION

KNOW ALL MEN BY THESE PRESENTS: That I, Herbert W. Crippen, Assessor of the City of Ann Arbor, Washtenaw County, Michigan, by virtue of authority in me vested by Section 51, Act 172 P.A. of 1929, having been duly authorized by the Common Council of the City of Ann Arbor, Washtenaw County, Michigan, have caused the land described in the annexed plat to be surveyed, laid out and platted, to be known as "Assessor's Plat No. 27, being a replat of Block 2 South of Huron St. Range 7 and 9 East of Second St. as shown in the Plat of the Ann Arbor Land Co. and a replat of Danforth and Wilson Add.," being a part of the South one half of the N.E. Quarter of Sec. 29, Town 2S., Range 6E., Michigan in the City of Ann Arbor, Washtenaw County, Michigan and that the streets and alleys as shown on said plat are hereby dedicated to the use of the public.

Witnesses
Harry S. Atwell
Frank M. Raney
Assessor of the City of Ann Arbor
Washtenaw Co., Michigan

ACKNOWLEDGMENT

STATE OF MICHIGAN }
COUNTY OF WASHTENAW } ss
On this 29 day of April, A.D. 1935,
before me a Notary Public in and for said county personally came the above named Herbert W. Crippen, Assessor of the City of Ann Arbor, Washtenaw County, Michigan known to me to be the person who executed the above dedication and acknowledged the same to be his free act and deed as such Assessor.

Clara M. Mast
Notary Public in and for Washtenaw
County, Michigan.

My commission expires June 29, 1936

DESCRIPTION

Commencing at the East Quarter post of Section 29, Ann Arbor Township, Washtenaw County, Michigan, thence N. 0° E. along the Section line, 41.75 feet to the Place of Beginning which is the intersection of the center line of Liberty Street with the center line of State Street, thence N. 0° E. along the center line of State Street, 332.65 feet to its intersection with the center line of Washington Street, thence N. 85° 46' 40" W. along the center line of Washington Street, 857.84 feet, to its intersection with the center line of Division Street, thence S. 03° 54' 20" W. along the center line of Division Street, 331.56 feet to its intersection with the center line of Liberty Street, thence S. 85° 46' 00" E. along the center line of Liberty Street, 880.51 feet to its intersection with the center line of State Street, the Place of Beginning.

SURVEYOR'S CERTIFICATE

I hereby certify that the plat hereon delineated is a correct one and that permanent metal monuments of not less than one inch in diameter and fifteen inches in length set in a concrete base of at least four inches in diameter and forty eighty inches in length have been placed at all points marked thus @ as hereon shown at all angles in the boundaries of land platted, at all the intersections of Streets, intersections of streets and alleys, or of alleys, and of the intersections of streets and alleys with the boundaries of the plat as shown on said plat.

George H. Sandenburgh
Registered Civil Engineer

CERTIFICATE OF MUNICIPAL APPROVAL

This plat was approved by the Common Council of the City of Ann Arbor, Washtenaw County, Michigan, at a meeting held this 7 day of March, 1935.

Judith Perry
City Clerk.

This plat was approved by the Board of Public Works of the City of Ann Arbor, Washtenaw County, Michigan, at a meeting held this 20 day of March, 1935.

Judith Perry
City Clerk.

CERTIFICATE OF APPROVAL BY BOARD OF COUNTY AUDITORS

Approved by the Board of County Auditors of Washtenaw County, Michigan this 30 day of April, 1935.

L. O. Cushing
Chairman
Otto D. ...
Edwin L. Brown