

# ADDENDUM No. 1

RFP No. 22-50

## Russell Street Improvements

**Due: June 9, 2022 by 10:00 a.m. (local time)**

The information contained herein shall take precedence over the original documents and all previous addenda (if any), and is appended thereto. **This Addendum includes 9 attached pages, and plan sheets as noted below.**

The Proposer is to acknowledge receipt of this Addendum No. 1, including all attachments in its Proposal by so indicating in the proposal that the addendum has been received. Proposals submitted without acknowledgement of receipt of this addendum may be considered non-conforming.

The following forms provided within the RFP Document should be included in submitted proposal:

- Attachment D - Prevailing Wage Declaration of Compliance
- Attachment E - Living Wage Declaration of Compliance
- Attachment G - Vendor Conflict of Interest Disclosure Form
- Attachment H - Non-Discrimination Declaration of Compliance

**Proposals that fail to provide these completed forms listed above upon proposal opening may be rejected as non-responsive and may not be considered for award.**

### I. CORRECTIONS/ADDITIONS/DELETIONS

Changes to the RFP documents which are outlined below are referenced to a page or Section in which they appear conspicuously. Offerors are to take note in its review of the documents and include these changes as they may affect work or details in other areas not specifically referenced here.

Section/Page(s)	Change
Pages 2-4	The Bid Form has been amended to reflect the modifications of this Addendum No. 1. Item number 254, Handrail, Lump Sum has been added.
Pages 5-6 + Plans	The project is adding handrail to the north side ramps to Maple Meadows as shown in the attached drawings (Plan Sheet 8A, Plan Sheet 11), detailed specification dated 06-02-2022, and Bid Form.
Plans Only	The controlled stormwater outlet structure detail has been corrected to show the proper Fluidic Cone outlet size of 9-inches (Plan Sheet 19, dated 06-02-2022). The Fluidic Cone model remains the same (FC-9).

Offerors are responsible for any conclusions that they may draw from the information contained in the Addendum.

**E. Schedule of Pricing/Cost – 20 Points**

Company: \_\_\_\_\_

**Unit Price Bid –**

<u>Item No.</u>	<u>Item Description</u>	<u>Unit</u>	<u>Est. Qty.</u>	<u>Unit Price</u>	<u>Total Price</u>
130	Protective Fencing	Ft	100	\$	\$
135	Stump, Remove	Ea	5	\$	\$
140	Exploratory Excavation, (0-10 ft. deep) (Trench Det 1, Modified)	Ea	2	\$	\$
201	Certified Payroll Compliance and Reporting	LSUM	1	\$	\$
202	General Conditions, Max \$80,000	LSUM	1	\$	\$
203	Audio-visual Recording	LSUM	1	\$	\$
204	Fence, Remove	Lft	185	\$	\$
205	Pavt Mrkg, Polyurea, 4 inch, White	Ft	300	\$	\$
206	Pavt Mrkg, Polyurea, 12 inch, White	Ft	80	\$	\$
207	Pavt Mrkg, Polyurea, 24 inch, White	Ft	12	\$	\$
210	Sign, Type B, Temp, Prismatic, Furn & Oper	Sft	328	\$	\$
211	Barricade, Type III, High Intensity, Furn & Oper	Ea	4	\$	\$
212	Plastic Drum, Fluorescent, Furn & Oper	Ea	50	\$	\$
213	Sign, Portable, Changeable Message, NTFICIP-Compliant, Furn & Oper	Ea	2	\$	\$
215	Sign Cover	Ea	2	\$	\$
217	Pedestrian Type II Barricade, Temp	Ea	4	\$	\$
219	Pedestrian Path, Temp	Ft	20	\$	\$
220	Pedestrian Ramp, Temp	Ea	1	\$	\$
226	Minor Traffic Devices, Max \$35,000	LSUM	1	\$	\$
227	Traffic Regulator Control	LSUM	1	\$	\$
229	Erosion Control, Inlet Filter	Ea	10	\$	\$
230	Sewer, Any Size or Depth, Rem	Ft	675	\$	\$
231	Dr Structure, Any Size or Depth, Rem	Ea	8	\$	\$
233	Curb and Gutter, Any Type or Size, Rem	Ft	100	\$	\$
234	Sidewalk and Ramps, Remove	Sft	965	\$	\$
235	Driveway Approach, Remove	Sft	2830	\$	\$
236	Pavement, Remove	Syd	160	\$	\$
237	Machine Grading, Modified, Russell	Sta	5	\$	\$
238	Sidewalk Grading	Ft	175	\$	\$
239	Sidewalk Ramp Grading	Ea	3	\$	\$

<u>Item No.</u>	<u>Item Description</u>	<u>Unit</u>	<u>Est. Qty.</u>	<u>Unit Price</u>	<u>Total Price</u>
240	Non-Hazardous Contrm'd Mat'l Handling & Disposal	Cyd	10	\$	\$
241	Subgrade Undercutting, Type IIB	Cyd	100	\$	\$
242	Structure Covers, Special	Lbs	6000	\$	\$
243	6 inch, Wrapped Underdrain	Ft	1300	\$	\$
244	Aggregate Base Course, 21AA, Modified	Ton	950	\$	\$
245	Maintenance Gravel, 21AA, Modified	Ton	100	\$	\$
246	Sand Subbase Course, Class II - C.I.P.	Cyd	90	\$	\$
251	Curb and Gutter, Conc, AA Det SD-R-1, Special	Ft	1300	\$	\$
252	Driveway Opening, Conc, Detail M, P-NC	Ft	200	\$	\$
253	Concrete Pavement, 8-inch with integral curb	Syd	160	\$	\$
254	Handrail	LSUM	1	\$	\$
255	Sidewalk, Concrete, 4 inch, Special	Sft	4500	\$	\$
256	Sidewalk Ramp, Concrete, 6 inch, Special	Sft	300	\$	\$
257	Sidewalk Retaining Wall, 6 inch to 24 inch	Sft	270	\$	\$
259	Drive Approach, Conc, 6 inch, Non-Reinf, P-NC	Sft	1200	\$	\$
261	Detectable Warning Surface, Modified	Ft	20	\$	\$
265	Hand Patching, Modified	Ton	5	\$	\$
267	HMA, EL	Ton	500	\$	\$
270	No Parking Sign	Ea	4	\$	\$
272	Irrigation Systems, Protection and Maintenance	LSUM	1	\$	\$
274	Project Clean-Up and Restoration, Special - Russell	LSUM	1	\$	\$
276	Topsoil Surface, 4 inch	Syd	4000	\$	\$
277	Seeding and Mulching	Syd	4000	\$	\$
278	Storm Control Structure, R1	Each	1	\$	\$
285	D.I. CL 50 Water Main, w/Poly Wrap, 8 inch, Tr Det I, Mod	Ft	10	\$	\$
287	Reducer, 8 inch x 6 inch	Ea	1	\$	\$
288	Tee, 8 inch x 8 inch x 8 inch	Ea	1	\$	\$
289	Fire Hydrant Assy, w/Extensions, Complete	Ea	1	\$	\$
294	6 inch Water Main, Abandon	Lft	10	\$	\$
298	Fire Hydrant, Rem	Ea	1	\$	\$
320	RCP, Sewer, C76, CL-IV, 12 inch, Tr Det I	Ft	140	\$	\$

<u>Item No.</u>	<u>Item Description</u>	<u>Unit</u>	<u>Est. Qty.</u>	<u>Unit Price</u>	<u>Total Price</u>
322	RCP, Sewer, C76, CL- IV, 36 inch, Tr Det I	Ft	500	\$	\$
362	Type II Manhole (6 ft. Dia.) (0-10 ft. deep)	Ea	5	\$	\$
363	Type II Manhole (6 ft. Dia.) Add'l Depth	Vf	9	\$	\$
367	Double Inlet	Ea	4	\$	\$
460	Excavate & Backfill for Water Service Tap and Lead	Lft	36	\$	\$
566	Adjust Structure Cover	Ea	4	\$	\$
567	Adjust Monument Box or Gate Valve Box	Ea	4	\$	\$
703	Silt Fence	Ft	500	\$	\$
810	Cercis Canadensis, 6 Foot Clump	EA	1	\$	\$
810	Nyssa Sylvatica, 2-inch	EA	2	\$	\$
810	Ostrya Virginiana, 2-inch	EA	2	\$	\$
810	Quercus Macrocarpa, 2.5-inch	EA	3	\$	\$

**Total Contract Price**

\$ \_\_\_\_\_

CITY OF ANN ARBOR  
DETAILED SPECIFICATION  
FOR  
**HANDRAIL**

WT:CT:RJM

1 of 2

06/02/22

**a. Description.** This work shall consist of fabricating and installing Handrail along the sidewalk as shown on the Plans. It shall include, but not be limited to, the furnishing of all material, labor and equipment to fabricate and install the handrail as described by this special provision. All work shall be performed in accordance with Sections 711, and 716 of the MDOT 2020 Standard Specifications for Construction (as applicable), as shown on the plans, and as specified herein.

**b. Quality Assurance.**

Fabricator Qualifications: Firm experienced in producing fabricated steel products similar to those indicated for this Project with a record of successful in-service performance and with sufficient production capacity to produce required units without delaying the Work.

Welding Standards: Comply with applicable provisions of AWS D1.1 "Structural Welding Code—Steel" and AWS D1.3 "Structural Welding Code—Sheet Steel."

The Contractor shall submit drawings detailing fabrication and installation of the fabricated steel products, including, but not limited to, sections, details, and other information that may be required by the Engineer.

**c. Materials.** The miscellaneous metal products used in the fabrication shall meet the requirements of Section 908 of the MDOT 2020 Standard Specifications and as approved by the Engineer. All materials shall be provided with smooth surfaces and be free of blemishes.

Steel Pipe: ASTM A 53, standard weight (schedule 40), hot-dipped galvanized steel pipe unless otherwise indicated.

Fasteners: Steel - ASTM A153 or ASTM A123 as applicable

Steel Plates, Shapes, and Bars: ASTM A 36.

Weld connections using materials and methods that minimize distortion and develop strength and corrosion resistance of base metals. Obtain fusion without undercut or overlap. Remove welding flux immediately. Finish exposed welds and surfaces smooth and blended.

All welded joints, seams, and corners shall be ground smooth. Welded corners shall exhibit only a slight roundness of 1/16" radius.

Dimensional tolerances: All fabricated items shall be built within an 1/8" of the dimensions as shown on the drawings.

**Construction.** Fabrications shall be installed plumb, level, square and true, set at proper elevations and positioning. Bearing surfaces and surfaces to be in permanent contact shall be cleaned of all dirt, rust, and all other substances before the members are assembled.

Do not weld, cut or abrade the surfaces of exterior units which have been hot dip galvanized after fabrication, and are intended for bolted or screwed field connections.

Installation of Anchor Bolts: Drill holes of diameter and depth recommended by anchor manufacturer. Clean hole of dust and debris before inserting anchor. Assemble anchor and complete installation according to manufacturer recommendations.

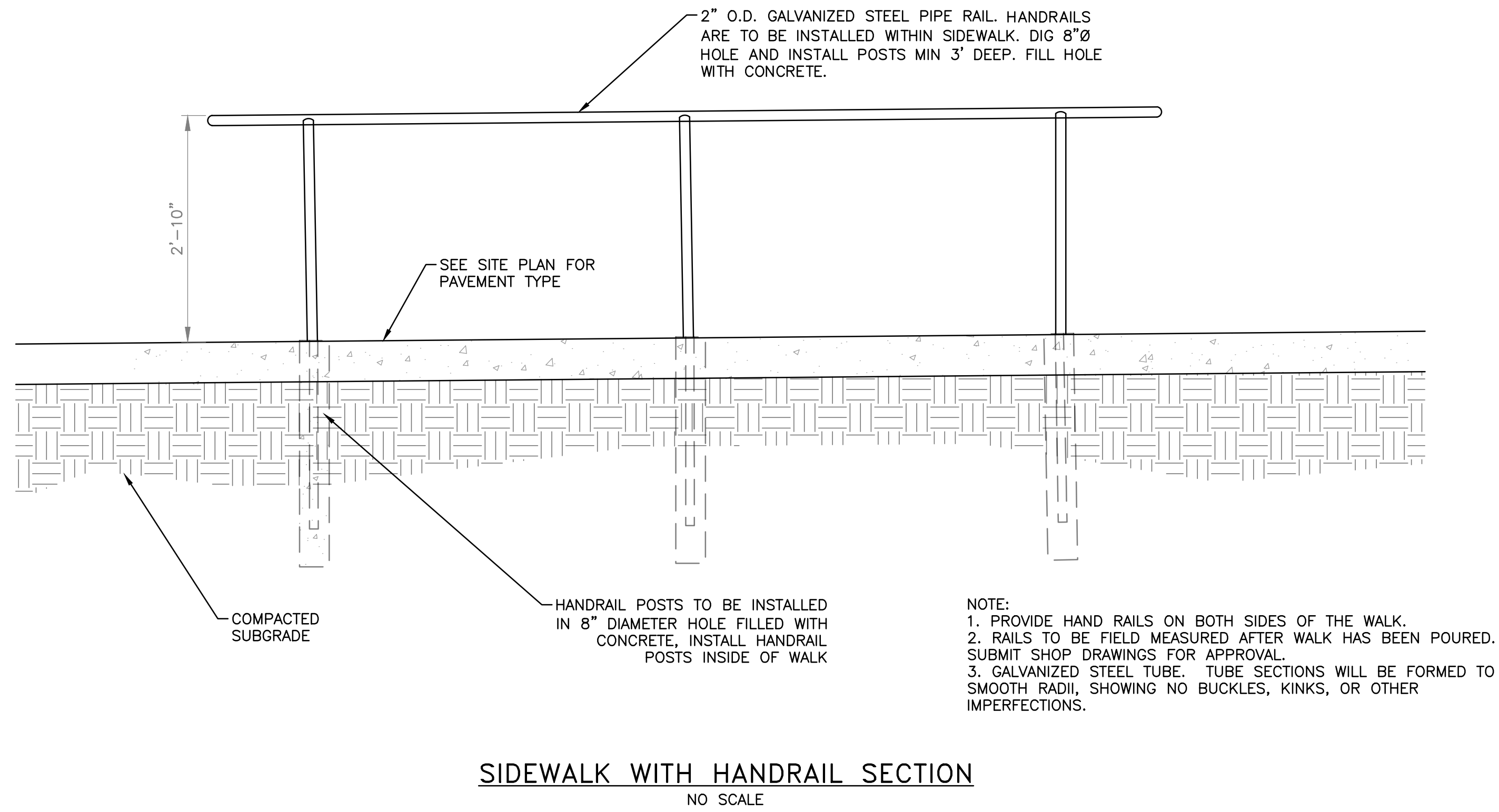
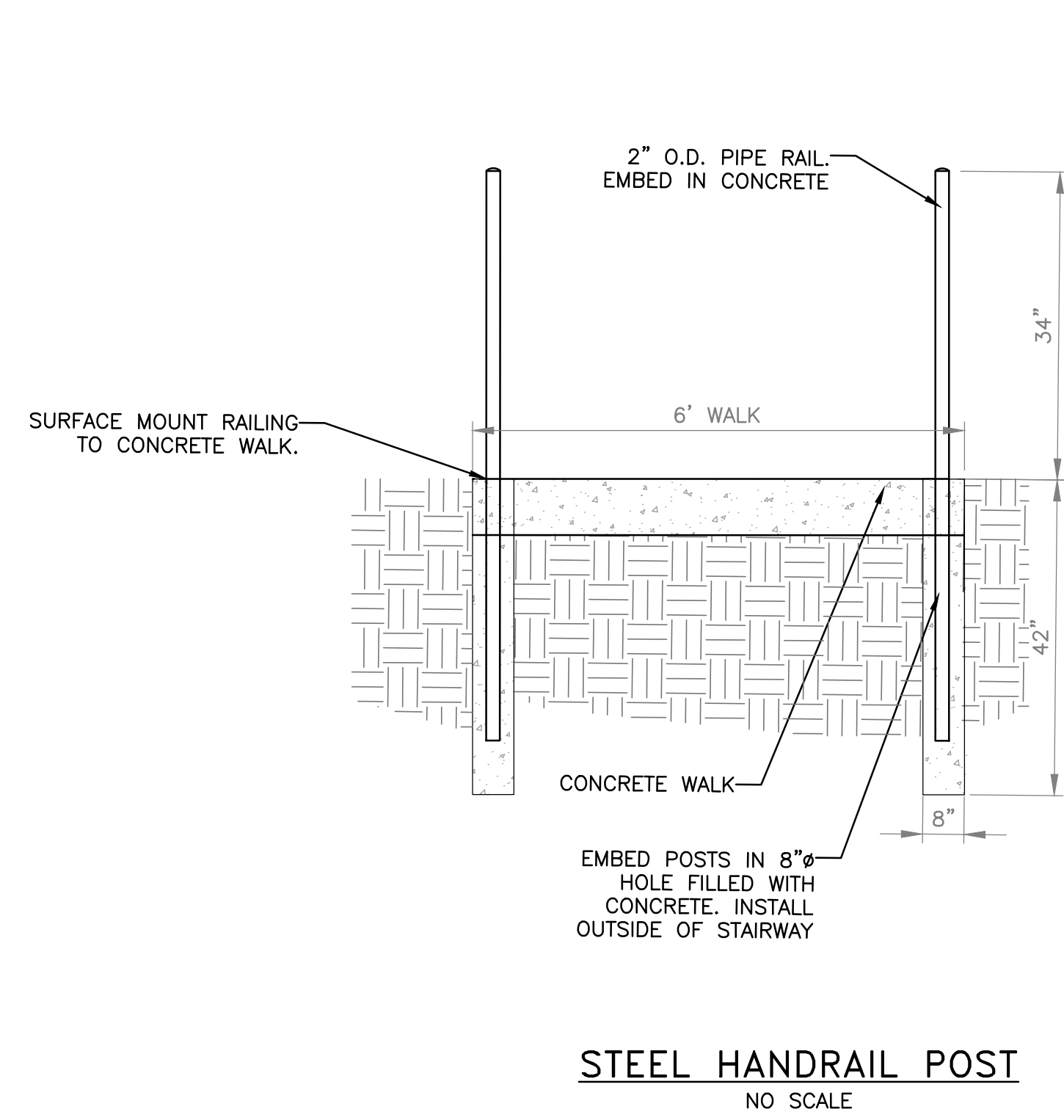
Provide pipe railing system with maximum 8-foot maximum post spacing and minimum 42-inch railing height to top rail. Top rail of handrailing system shall be 34-inches high above the sidewalk.

Provide removable pipe railings with close-fitting sleeves set in concrete where indicated on the Plans. Sleeves shall be 1-inch less in length than thickness of concrete.

**d. Measurement and Payment.** The completed work, as described, will be measured and paid for at the approved price for the following pay item:

<u>Contract Item (Pay Item)</u>	<u>Pay Unit</u>
Handrail .....	Lump Sum

Payment shall include all materials, labor, and equipment required to furnish, fabricate and install the handrail in accordance with the Plans and specification, complete. Cost of mounting hardware, bolts, and washers shall be included in these items.

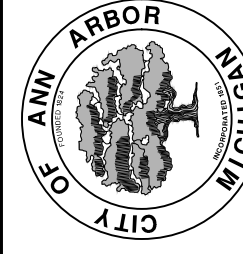


NOTE:  
 1. PROVIDE HAND RAILS ON BOTH SIDES OF THE WALK.  
 2. RAILS TO BE FIELD MEASURED AFTER WALK HAS BEEN POURED. SUBMIT SHOP DRAWINGS FOR APPROVAL.  
 3. GALVANIZED STEEL TUBE. TUBE SECTIONS WILL BE FORMED TO SMOOTH RADII, SHOWING NO BUCKLES, KINKS, OR OTHER IMPERFECTIONS.



Know what's below.  
Call Before you dig.

CITY OF ANN ARBOR  
 PUBLIC SERVICES  
 301 EAST HURON STREET  
 ANN ARBOR, MI 48106-1667  
 www.a2gov.org



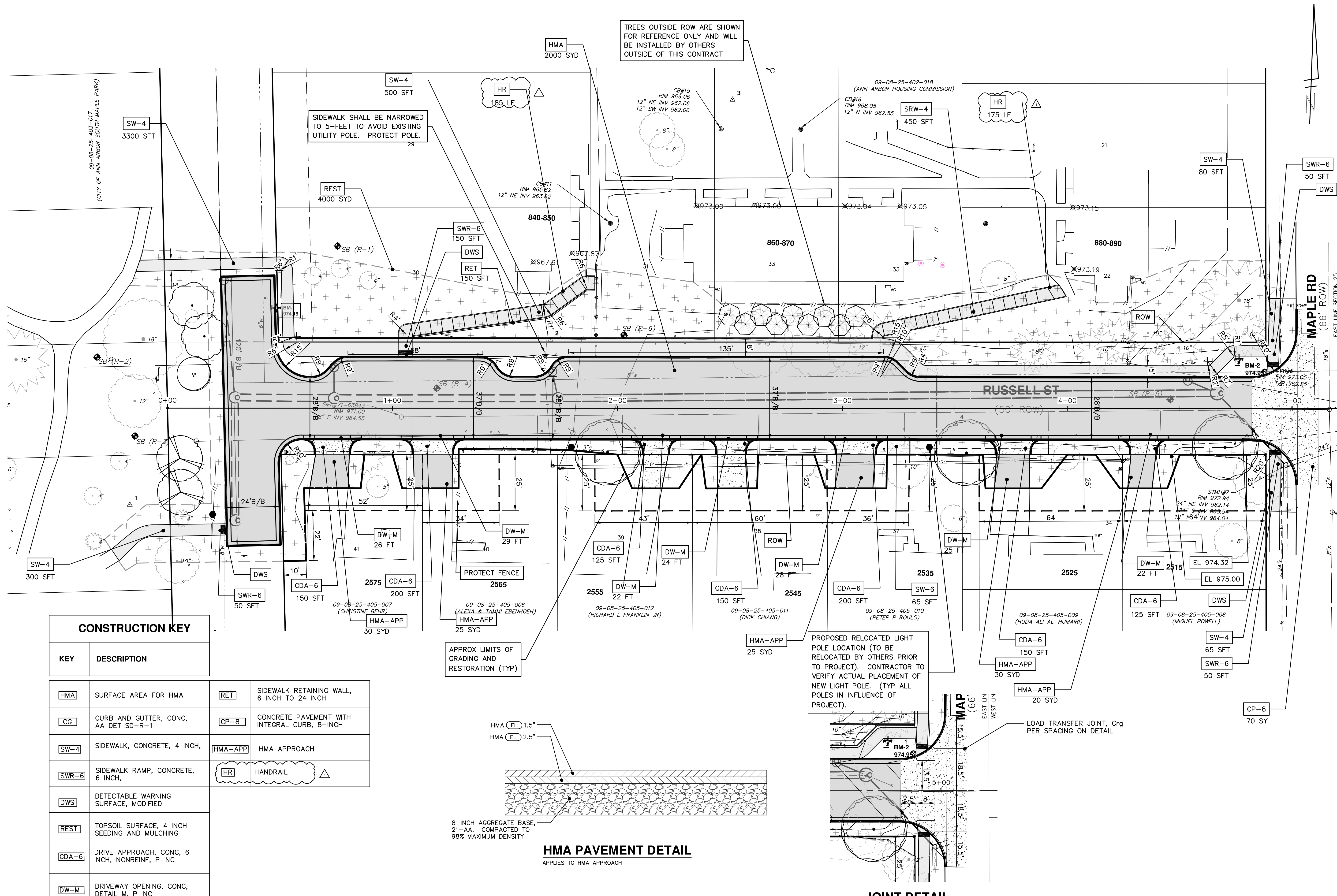
CITY OF ANN ARBOR - PUBLIC SERVICES - ENGINEERING  
 RUSSELL STREET IMPROVEMENTS

SCALE PLAN: #####  
 DRAWING No. 2014000-8A

SHEET No. 8A OF 22

REV.	DESCRIPTION	DATE	DRAWN	CHECKED
01	ADDENDUM #1	6/7/2022		

C:\pw\_work\2\1102116\GRD-PLTS-Proposed Road.dwg Dwg Created: 16-May-22 -- \_a2 standard bw.stb -- Plot Date: 2-Jun-22

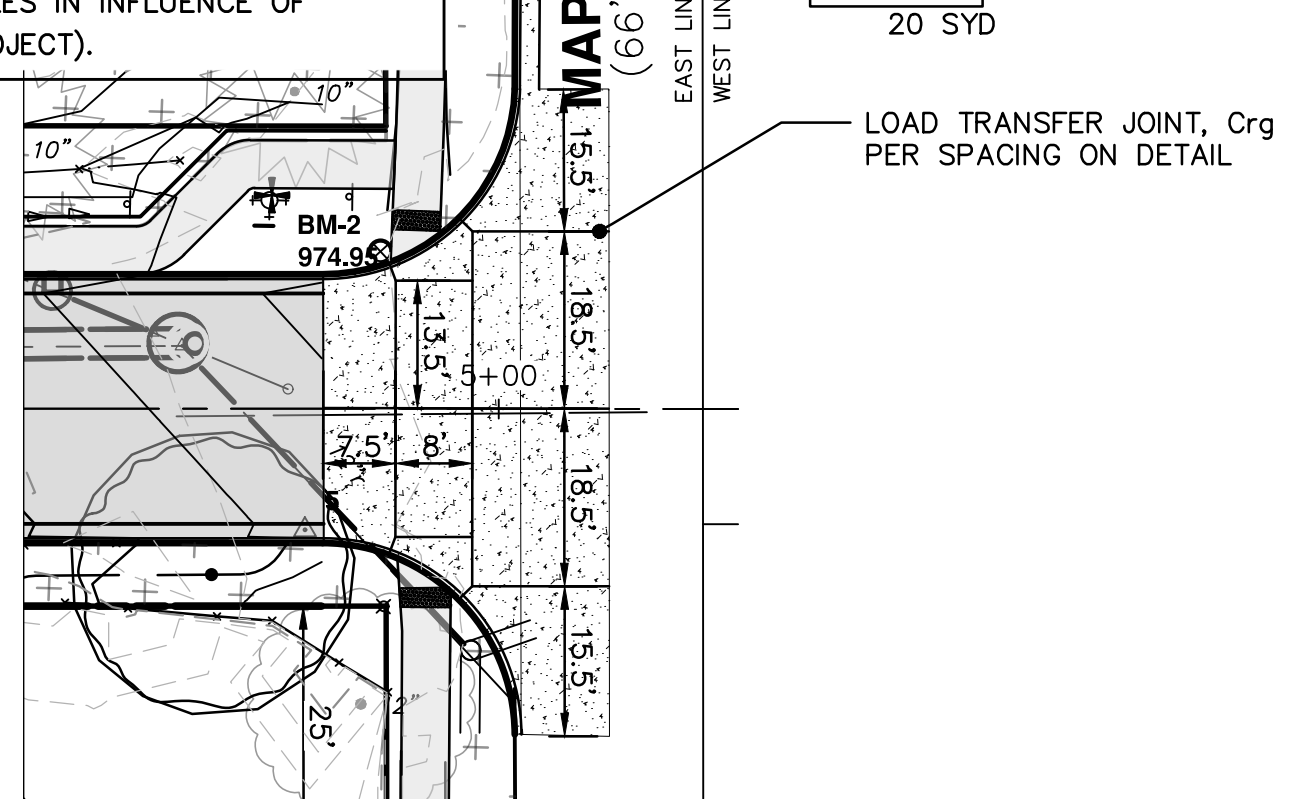
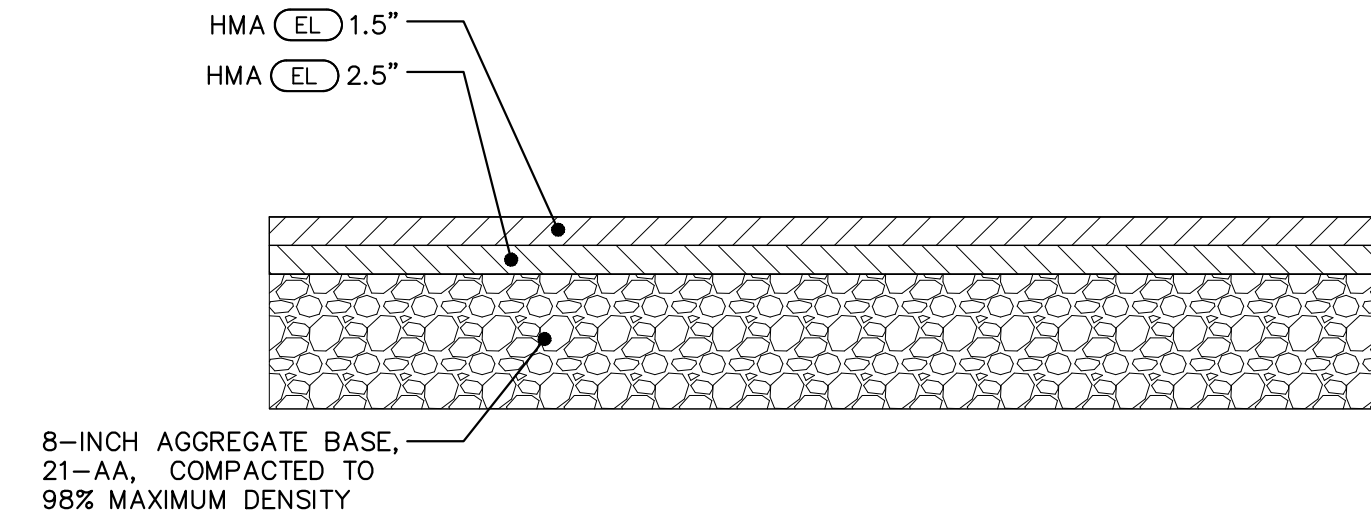


TREES OUTSIDE ROW ARE SHOWN FOR REFERENCE ONLY AND WILL BE INSTALLED BY OTHERS OUTSIDE OF THIS CONTRACT

SIDEWALK SHALL BE NARROWED TO 5- FEET TO AVOID EXISTING UTILITY POLE. PROTECT POLE.

PROPOSED RELOCATED LIGHT POLE LOCATION (TO BE RELOCATED BY OTHERS PRIOR TO PROJECT). CONTRACTOR TO VERIFY ACTUAL PLACEMENT OF NEW LIGHT POLE. (TYP ALL POLES IN INFLUENCE OF PROJECT).

APPROX LIMITS OF GRADING AND RESTORATION (TYP)



CONSTRUCTION KEY	
KEY	DESCRIPTION
[HMA]	SURFACE AREA FOR HMA
[CG]	CURB AND GUTTER, CONC, AA DET SD-R-1
[SW-4]	SIDEWALK, CONCRETE, 4 INCH,
[SWR-6]	SIDEWALK RAMP, CONCRETE, 6 INCH,
[DWS]	DETECTABLE WARNING SURFACE, MODIFIED
[REST]	TOPSOIL SURFACE, 4 INCH SEEDING AND MULCHING
[CDA-6]	DRIVE APPROACH, CONC, 6 INCH, NONREINF, P-NC
[DW-M]	DRIVEWAY OPENING, CONC, DETAIL M, P-NC
[RET]	SIDEWALK RETAINING WALL, 6 INCH TO 24 INCH
[CP-8]	CONCRETE PAVEMENT WITH INTEGRAL CURB, 8-INCH
[HMA-APP]	HMA APPROACH
[HR]	HANDRAIL

Know what's below. Call Before you dig.

REV	DATE	DESCRIPTION	CHECKED	DRAWN
01	6/2/2022			

**CITY OF ANN ARBOR - PUBLIC SERVICES - ENGINEERING**

RUSSELL STREET IMPROVEMENTS

SCALE PLAN: 1" = 20'  
PROFILE: 1" = 4'

DRAWING NO. 2014000-11

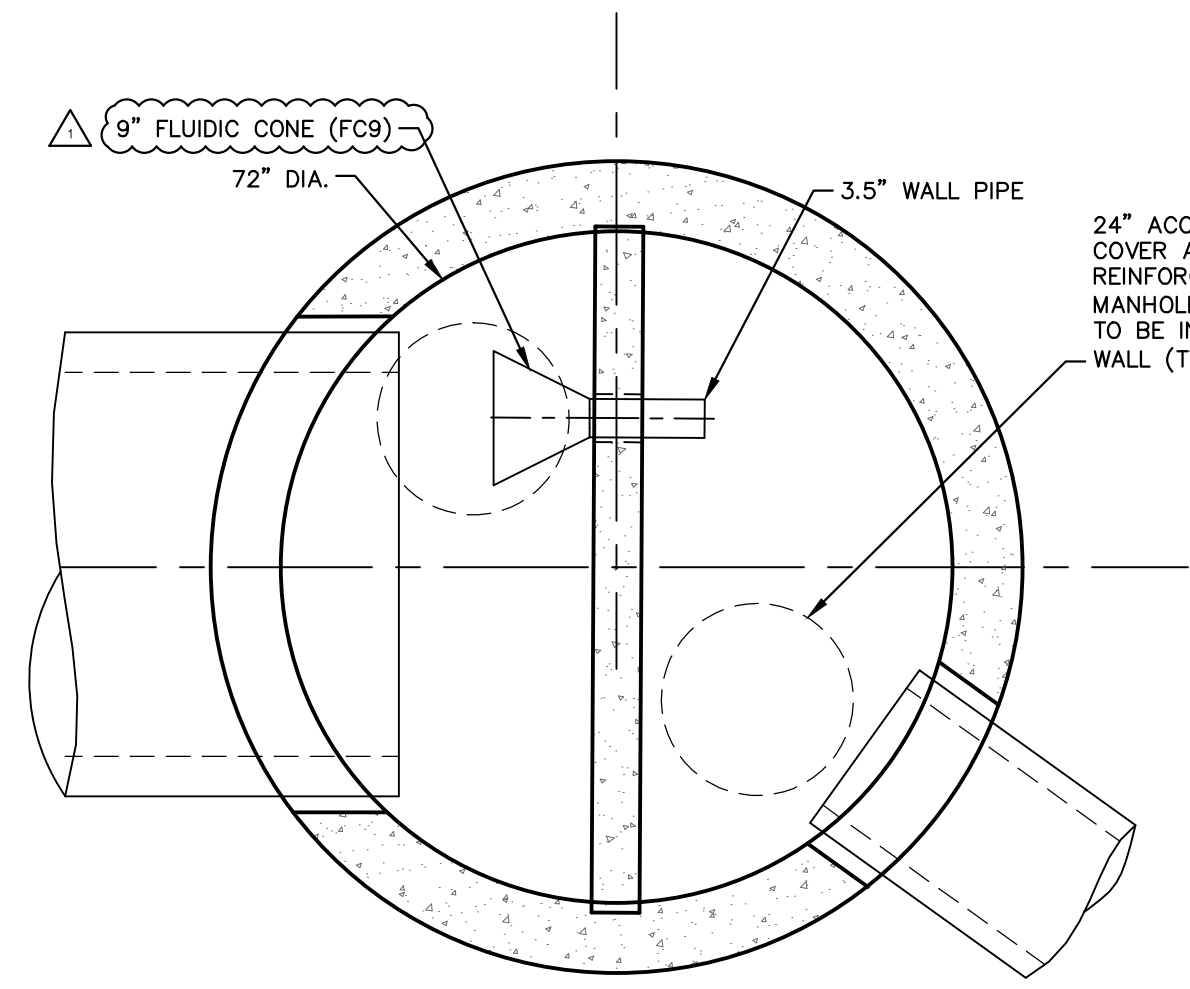
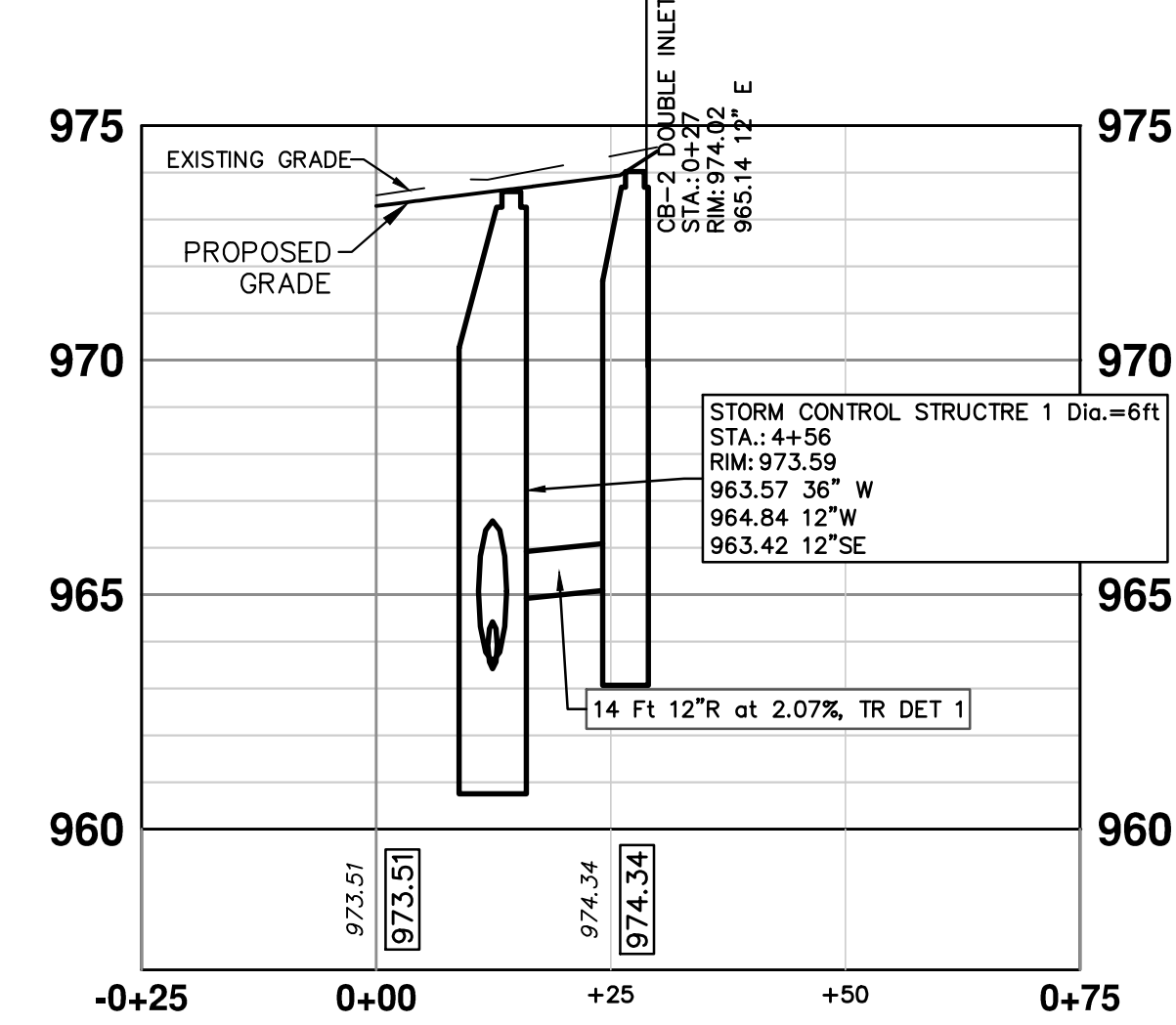
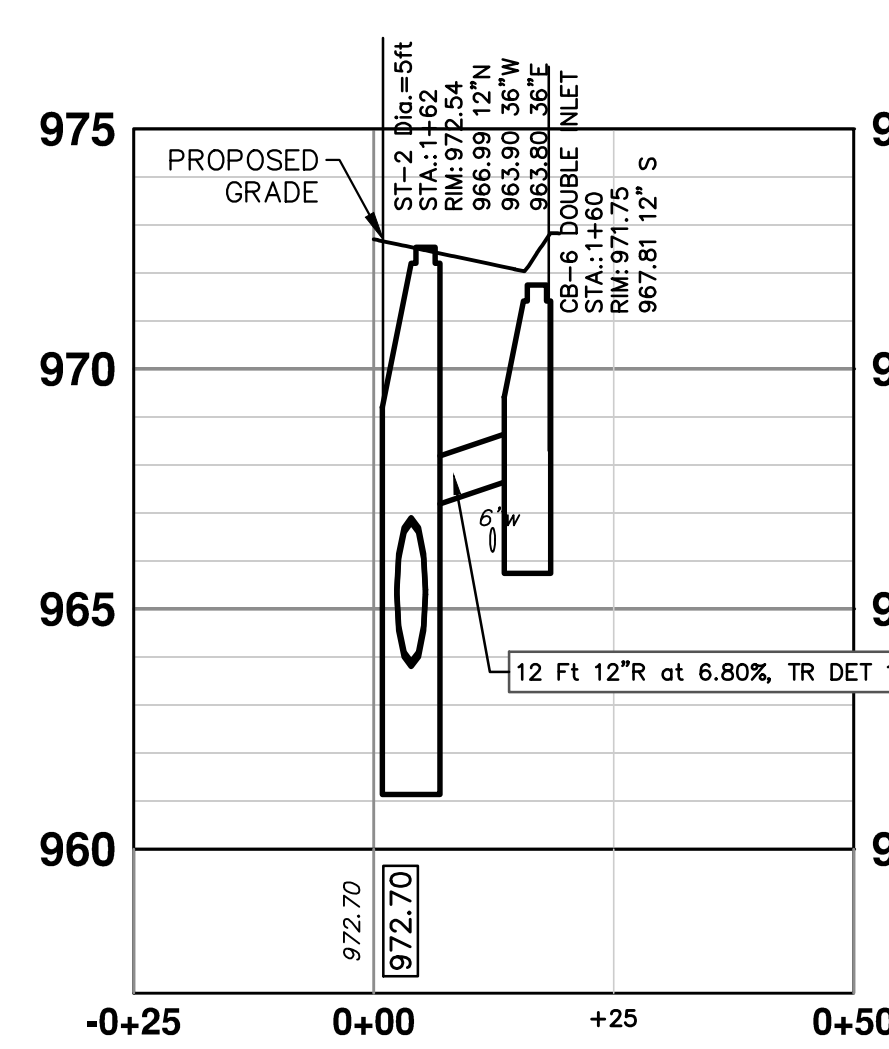
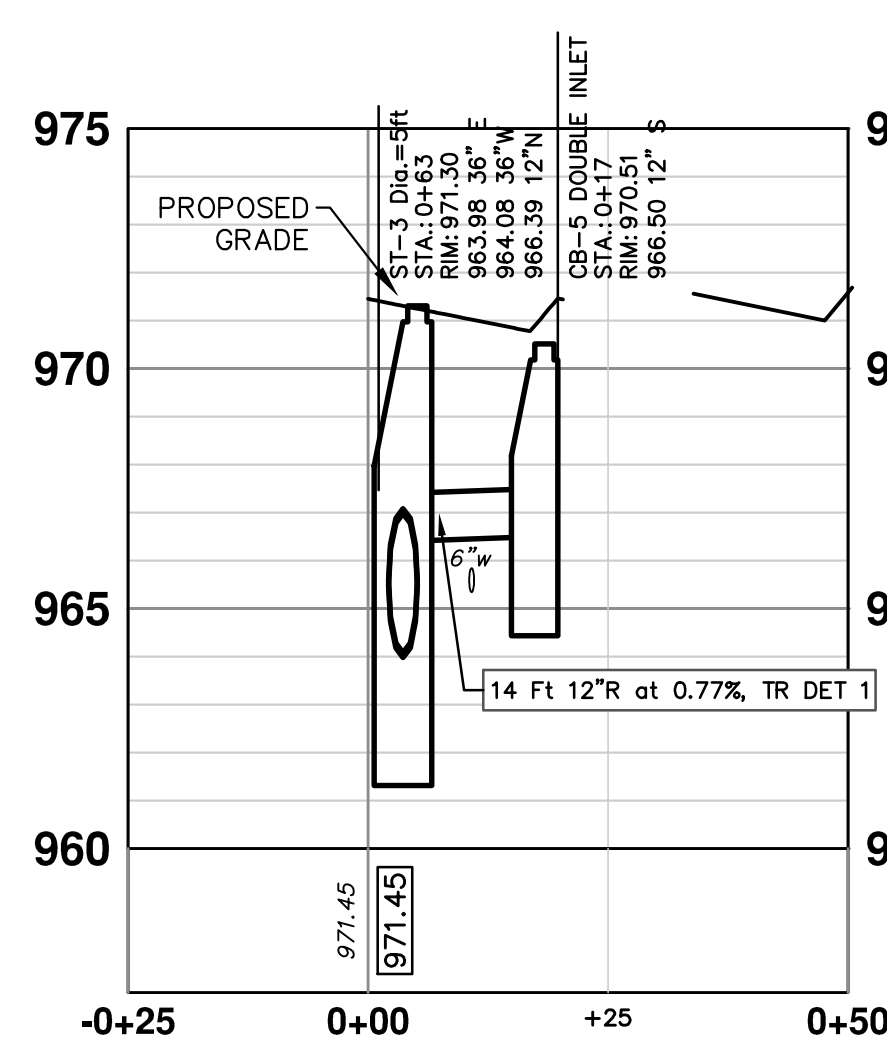
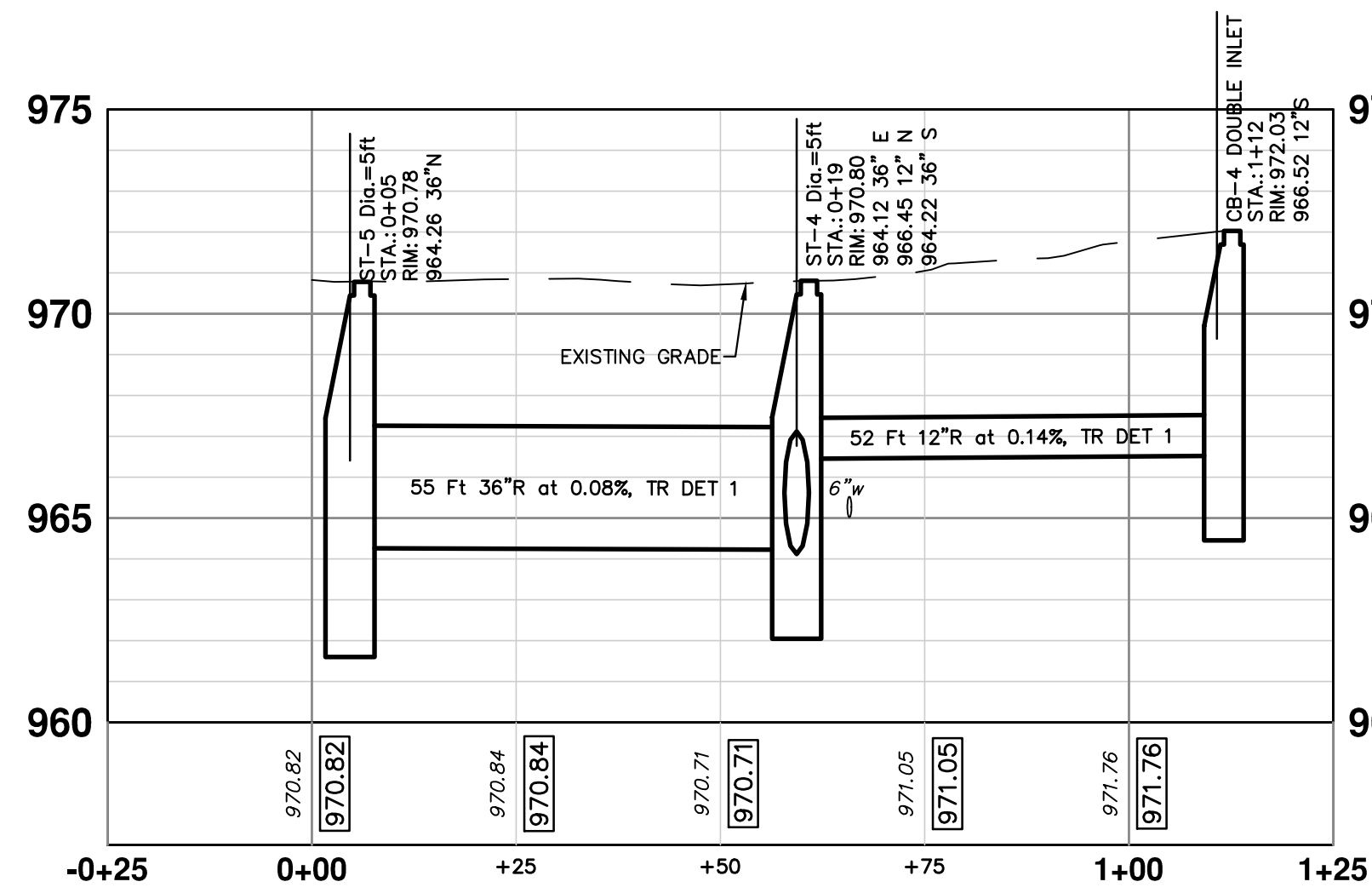
SHEET NO. 11 OF 22

**CITY OF ANN ARBOR**  
PUBLIC SERVICES  
301 EAST HURON STREET  
ANN ARBOR, MI 48106-0647  
ANN ARBOR 734/794-4410  
www.a2gov.org

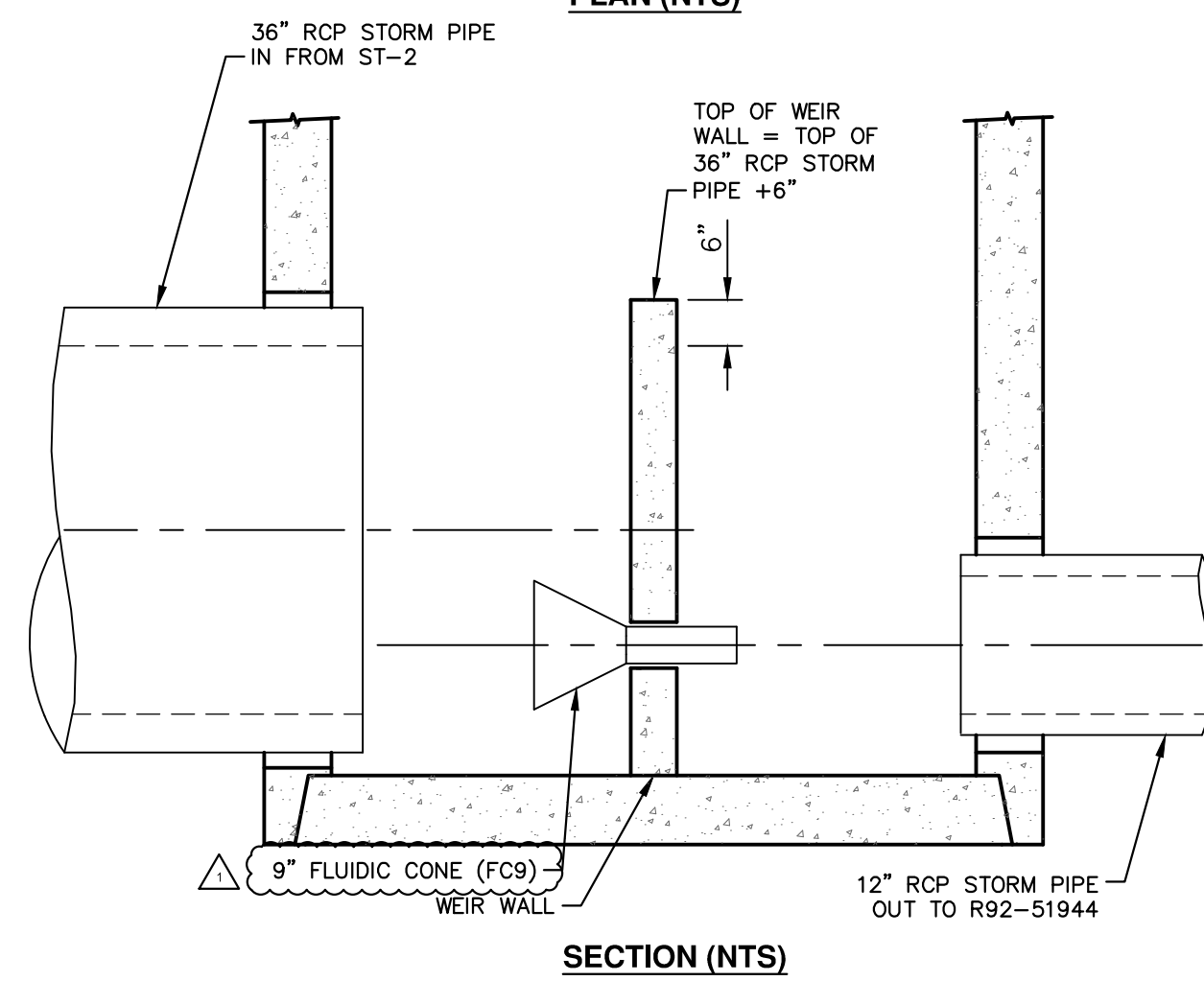
**PAVING PLAN**



C:\pwork\mhoemke\1102116\CST-PLTS-Proposed Storm.dwg Dwg Created: 2-Jun-22 - \_a2 standard bw.stb - Plot Date: 2-Jun-22



PLAN (NTS)



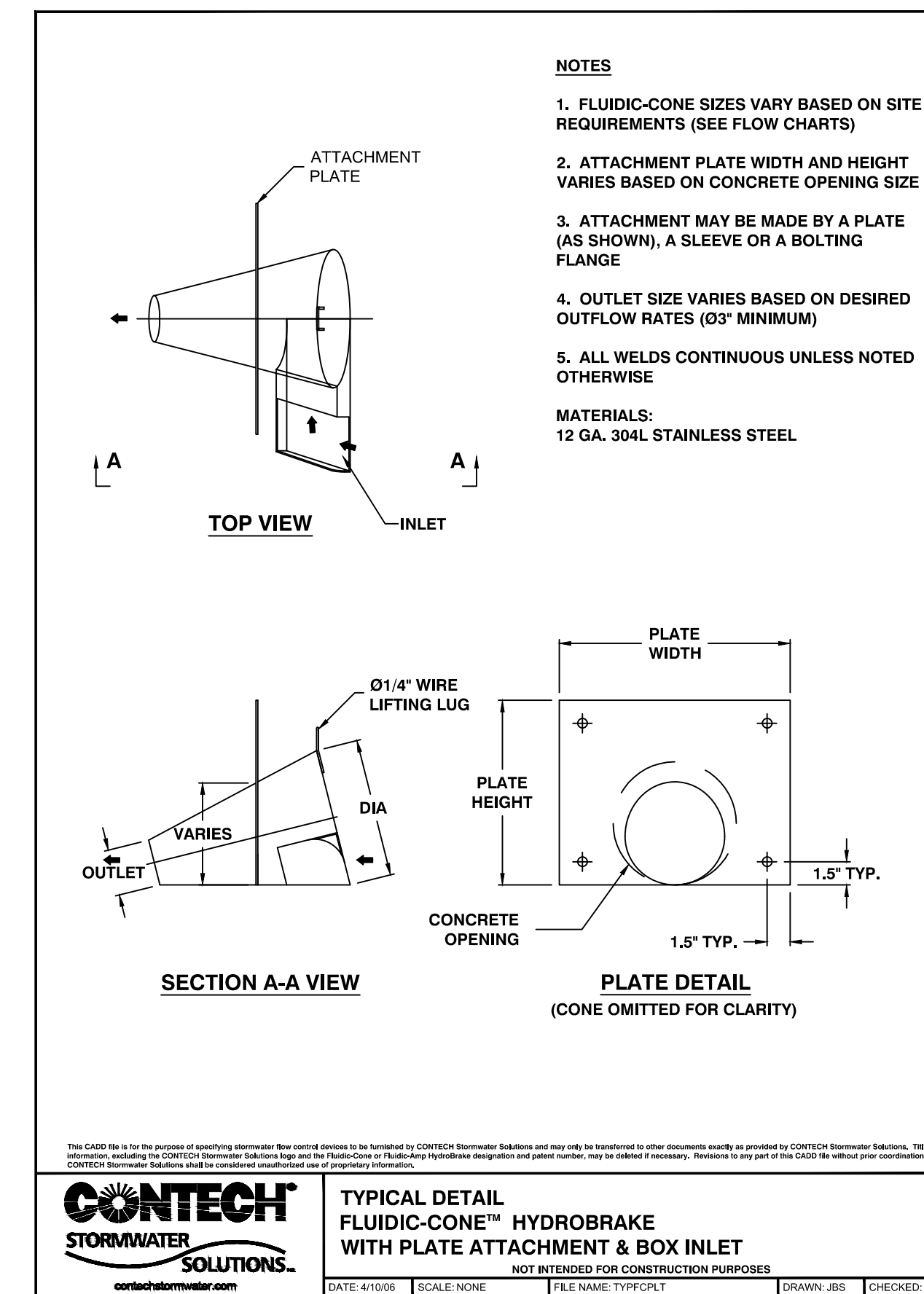
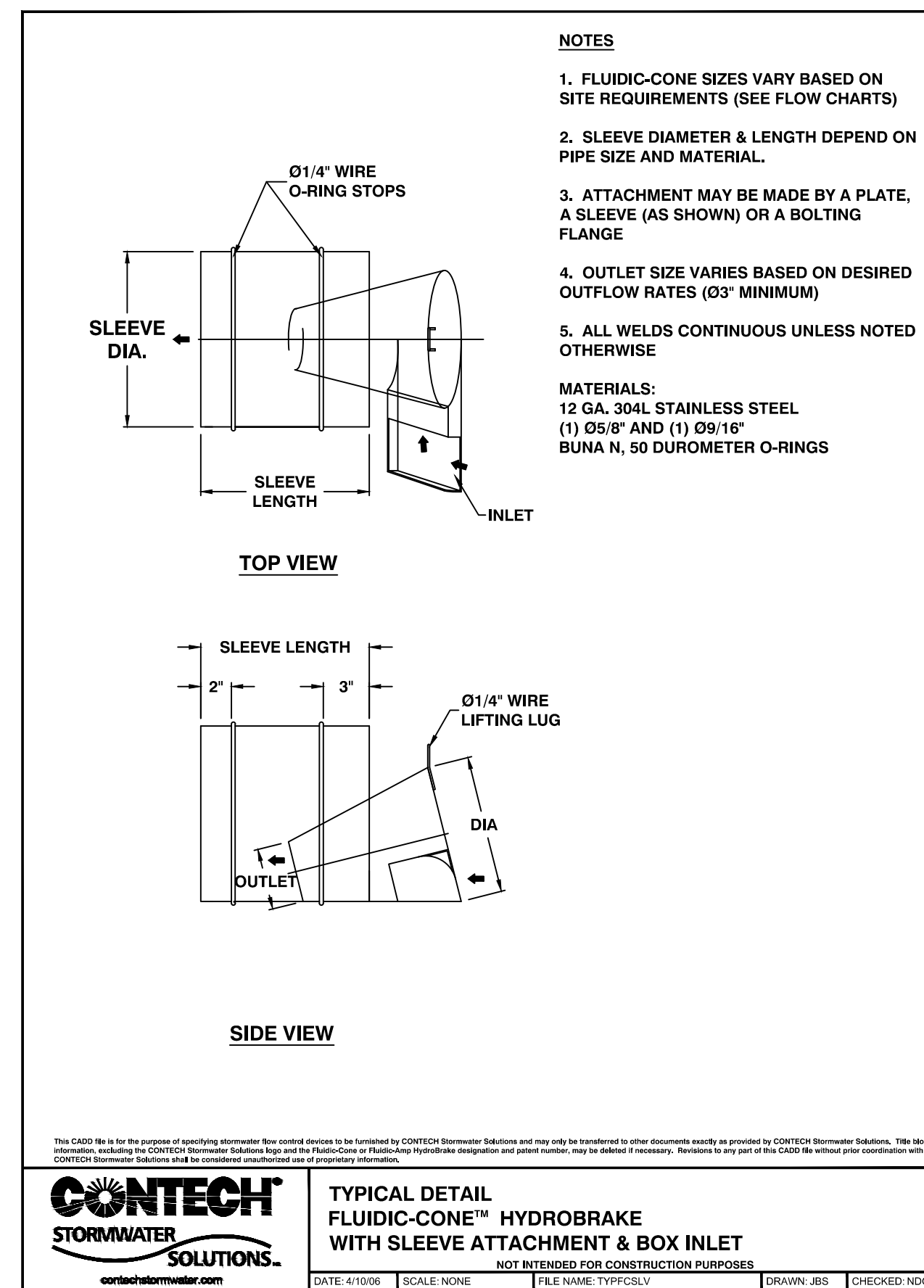
SECTION (NTS)

NOTE:

- CONTRACTOR SHALL PROVIDE SHOP DRAWINGS AND DESIGN CALCULATIONS FOR EACH OF THE "STORM CONTROL STRUCTURE, 1" ITEMS AND THEY SHALL BE SIGNED AND SEALED BY A PROFESSIONAL ENGINEER REGISTERED IN THE STATE OF MICHIGAN.
- "STORM CONTROL STRUCTURE, 1" SHALL BE MANUFACTURED TO ASTM C76-CL2 SPECIFICATIONS FOR HS-20 TRUCK LOADING.
- REINFORCED CONCRETE DESIGN IS TO COMPLY WITH APPLICABLE MINIMUM REQUIREMENTS SET FORTH IN ACI 350-01(CODE REQUIREMENTS FOR ENVIRONMENTAL ENGINEERING CONCRETE STRUCTURES).
- TOP SLAB OF STRUCTURE SHALL BE PRE-CAST CONCRETE WITH TWO 24-INCH OPENINGS.
- STANDARD MANHOLE STEPS TO BE PLACED ALONG THE MANHOLE WALL FOR BOTH ACCESS POINTS.

**UNDERGROUND STORMWATER STORAGE CONTROL STRUCTURE**

PAID FOR AS STORM STORM CONTROL STRUCTURE 1

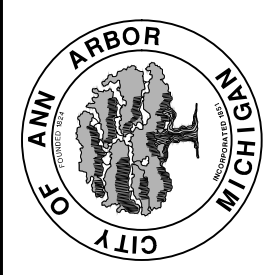


INCLUDED IN PAY ITEM FOR STORM CONTROL STRUCTURE 1. THE ABOVE DETAILS ARE EXAMPLES OF THE FLOW RESTRICTION DEVICES REQUESTED FOR THE PROJECT. OTHER SIMILAR DEVICES WILL BE CONSIDERED FOR USE. FLOW RESTRICTION DEVICES MUST CONFORM TO THE DETAILED SPECIFICATION.



REV.	DESCRIPTION	DATE	DRAWN	CHECKED
01	ADDENDUM #1	6/2/2022		

CITY OF ANN ARBOR  
PUBLIC SERVICES  
301 EAST HURON STREET  
ANN ARBOR MI 48107-8647  
www.a2gov.org



**CITY OF ANN ARBOR - PUBLIC SERVICES - ENGINEERING**  
**RUSSELL STREET IMPROVEMENTS**  
PROPOSED CATCH BASIN PROFILES

SCALE PLAN: 1" = 20'  
PROFILE: 1" = 4'  
DRAWING No. 2014000-17