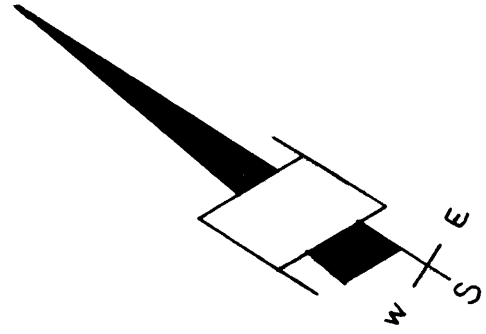
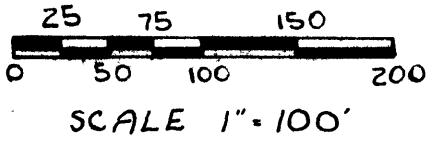


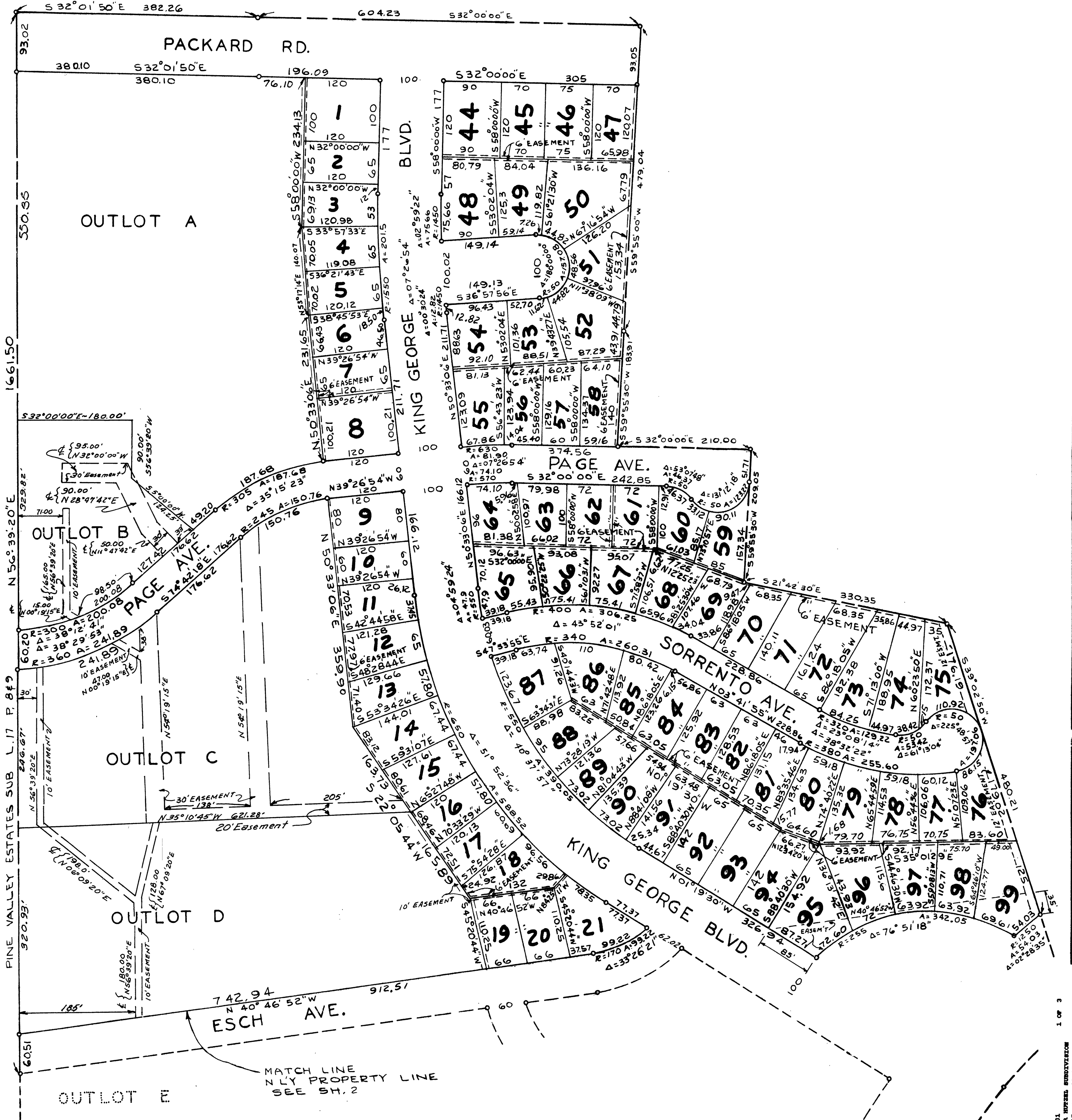
"SMOKLER HUTZEL SUBDIVISION"

OF PART OF THE S.E. 1/4 OF SECTION 4 AND PART OF THE N.E. 1/4 OF SECTION 9, T.3 S., R.6E., CITY OF ANN ARBOR, WASHTENAW COUNTY, MICHIGAN



NOTE:

ALL DIMENSIONS ARE SHOWN IN FEET AND DECIMALS THEREOF, ALL CURVILINEAR DIMENSIONS ARE SHOWN ALONG THE ARC, ALL EASEMENTS ARE PRIVATE FOR PUBLIC UTILITIES AND DRAINAGE.

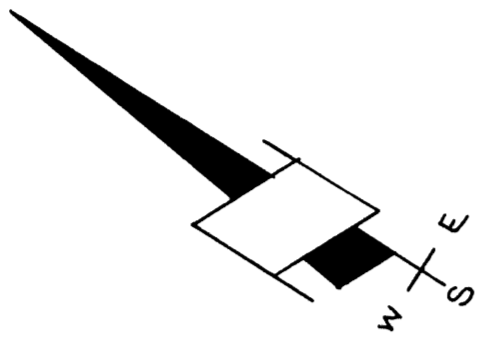
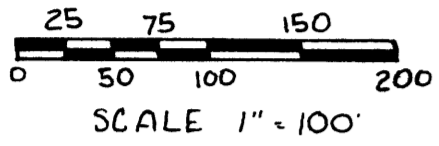


"SMOKLER HUTZEL SUBDIVISION"

OF PART OF THE S.E. 1/4 OF SECTION 4 AND PART OF THE N.E. 1/4 OF SECTION 9, T.3 S., R.6 E., CITY OF ANN ARBOR, WASHTENAW COUNTY, MICHIGAN

NOTE:

ALL DIMENSIONS ARE SHOWN IN FEET AND DECIMALS THEREOF.
ALL CURVILINEAR DIMENSIONS ARE SHOWN ALONG THE ARC.
ALL EASEMENTS ARE PRIVATE FOR PUBLIC UTILITIES AND DRAINAGE



OUTLOT D

MATCH LINE
N'LY PROPERTY LINE
AVE.

ESCH N 40°46'52" W
746.47 656.47

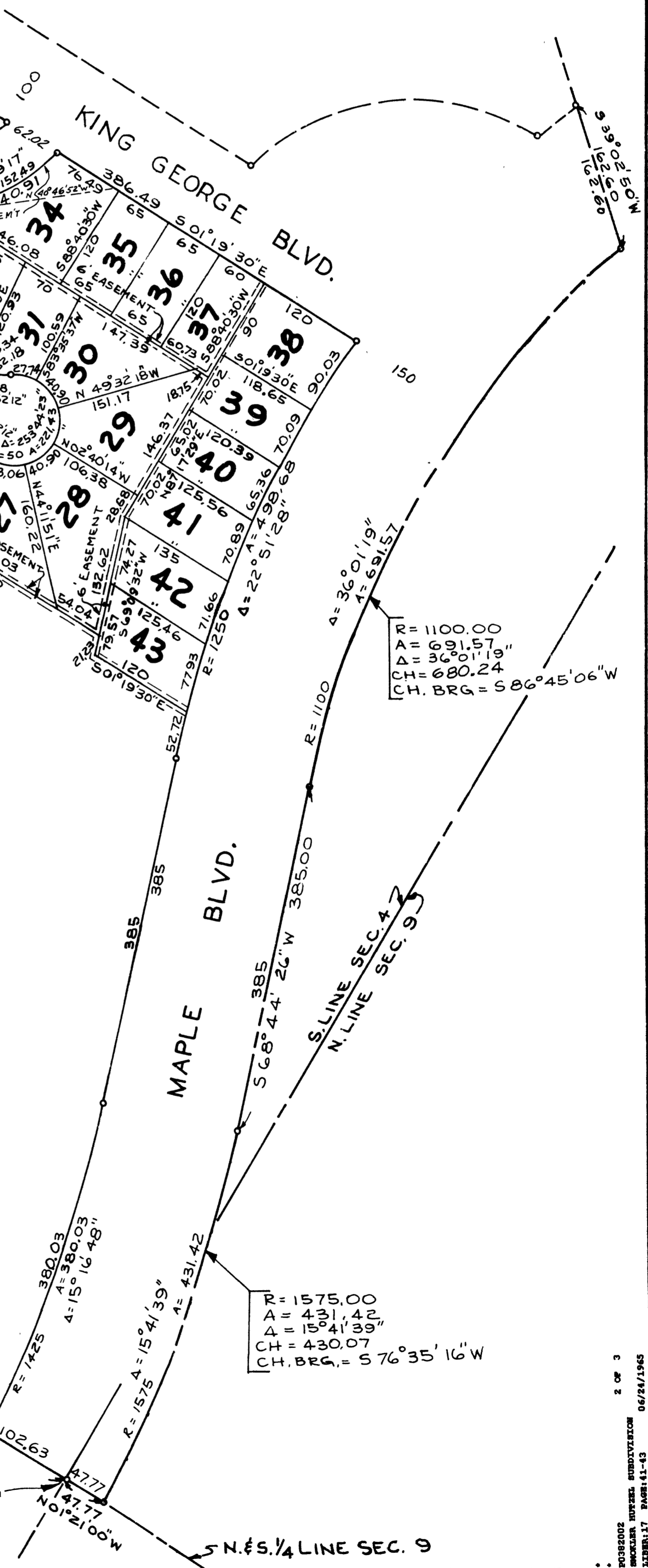
OUTLOT E

N 56°39'20" E 611.46
611.46

N 01°46'10" W 1136.49
1239.11

N 65 1/4 LINE SEC. 4

POINT OF BEGINNING
S. 1/4 COR. SEC. 4
T.3 S., R.6 E.



R = 1100.00
A = 69.57
Δ = 36°01'19"
CH = 680.24
CH. BRG = S 86°45'06" W

R = 1575.00
A = 431.42
Δ = 15°41'39"
CH = 430.07
CH. BRG = S 76°35'16" W

N 65 1/4 LINE SEC. 9
SHEET 2 OF 3 SHEETS

"SMOKLER HUTZEL SUBDIVISION"

OF PART OF THE S.E. 1/4 OF SECTION 4 AND PART OF THE N.E. 1/4 OF SECTION 9, T.3 S., R.6 E., CITY OF ANN ARBOR, WASHTENAW COUNTY, MICHIGAN

DEDICATION

KNOW ALL MEN BY THESE PRESENTS, that we, SYLVAN DEVELOPMENT COMPANY, INC., a Michigan corporation by Bert L. Smokler, President, and Arthur E. Knoff, Secretary, and EDWARD C. HUTZEL and MARGARET C. HUTZEL, his wife, as proprietors, have caused the land embraced in the annexed plat to be surveyed, laid out and platted to be known as SMOKLER-HUTZEL SUBDIVISION, part of the S. E. 1/4 of Section 4 and part of the N. E. 1/4 of Section 9, T. 3 S., R. 6 E., City of Ann Arbor, Washtenaw County, Michigan, and the streets and alleys as shown on said plat are hereby dedicated to the use of the public, and that the easements indicated on said plat are not dedicated to the public but reserved for public utilities, and any other use designated hereon, and no permanent structures are to be located within said easements. Signed and sealed in the presence of:

SYLVAN DEVELOPMENT COMPANY, INC.
200 Northland Towers
Southfield, Michigan

Priscilla E. Harper
Priscilla E. Harper (Witness)

Bert L. Smokler
Bert L. Smokler, President

Ruth A. Chesney
Ruth A. Chesney (Witness)

Arthur E. Knoff
Arthur E. Knoff, Secretary

Edward S. Tripp
Edward S. Tripp (Witness)

Edward C. Hutzel
Edward C. Hutzel
2525 Packard Road, Ann Arbor, Michigan

Roberta S. Ward
Roberta S. Ward (Witness)

Margaret C. Hutzel
Margaret C. Hutzel
2525 Packard Road, Ann Arbor, Michigan

ACKNOWLEDGMENT

STATE OF MICHIGAN)
) ss
COUNTY OF OAKLAND)

On this 24th day of February 1965, before me, a Notary Public in and for said County, personally came the above named Bert L. Smokler and Arthur E. Knoff to me personally known, who being each by me duly sworn did say that they are the President and Secretary respectively of the SYLVAN DEVELOPMENT COMPANY, INC., a Michigan corporation, and that the seal affixed to said instrument is the corporation seal of said corporation and that the said instrument was signed and sealed in behalf of said corporation by authority of its Board of Directors; and the said officers acknowledged the said instrument to be the free act and deed of said corporation.

Mary M. Lemcke
Mary M. Lemcke, Notary Public, Oakland Co.

My Commission Expires: August 13, 1967

ACKNOWLEDGMENT

STATE OF MICHIGAN)
) ss
COUNTY OF WASHTENAW)

On this 4th day of February 1965, before me, a Notary Public in and for said County, personally came the above named Edward C. Hutzel and Margaret C. Hutzel, his wife, known to me to be the persons who executed the above dedication and acknowledged the same to be their free act and deed.

Edward S. Tripp
Edward S. Tripp Notary Public, Washtenaw Co.

My Commission Expires: Jan 7, 1969

COUNTY TREASURER'S CERTIFICATE

Office of County Treasurer, Washtenaw County, I hereby certify that there are no tax liens of titles held by the State on the lands described hereon, and that there are no tax liens of titles held by individuals on said lands, for the five years preceding the 23 day of April 1965 and that the taxes for said period of five years are all paid, as shown by the records of this office. This certificate does not apply to taxes, if any, now in process of collection by Township, City or Village collecting officers.

Sylvester A. Leonard
Sylvester A. Leonard (County Treasurer)

DESCRIPTION OF LAND PLATTED

The land embraced in the annexed plat of SMOKLER-HUTZEL SUBDIVISION, part of the S. E. 1/4 of Section 4 and part of the N. E. 1/4 of Section 9, T. 3 S., R. 6 E., City of Ann Arbor, Washtenaw County, Michigan, is described as follows:

Beginning at the S. 1/4 corner of Section 4, T. 3 S., R. 6 E., City of Ann Arbor, Washtenaw County, Michigan, thence along the North and South 1/4 line of said Section 4 N. 01° 46'10" W. 1239.11 ft.; thence along the Southeasterly boundary of Pine Valley Estates Subdivision, Liber 17, Pages 8 and 9 of Washtenaw County Plats N. 56° 39'20" E. 2272.96 ft.; thence along the Easterly line of Packard Road (93 ft. wide) the following two courses: S. 32° 01'50" E. 382.26 ft. and S. 32° 00'00" E. 604.23 ft.; thence S. 59° 55'00" W. 479.04 ft.; thence S. 59° 55'30" W. 183.91 ft.; thence S. 32° 00'00" E. 210.00 ft.; thence S. 59° 55'30" W. 209.05 ft.; thence S. 21° 42'30" E. 330.35 ft.; thence S. 39° 02'50" W. 642.81 ft.; thence along a curve to the left 691.57 ft., radius 1100.00 ft., central angle 36° 01' 19", chord length 680.24 ft., chord bearing S. 86° 45'06" W.; thence S. 68° 44'26" W. 385.00 ft.; thence along a curve to the right 431.42 ft., radius 1575.00 ft., central angle 15° 41'39", chord length 430.07 ft., chord bearing S. 76° 35'16" W.; thence N. 01° 21'00" W. 47.77 ft. to the point of beginning and containing 99 lots numbered 1 through 99 and 5 outlots lettered A through E.

SURVEYOR'S CERTIFICATE

I hereby certify that the plat hereon delineated is a correct one and that permanent metal monuments consisting of bars not less than one-half inch in diameter and 36 inches in length, or shorter bars of not less than one-half inch in diameter lapped over each other at least 6 inches with an overall length of not less than 36 inches encased in a concrete cylinder at least 4 inches in diameter and 36 inches in depth have been placed at points marked thus (O) as thereon shown at all angles in the boundaries of the land platted, at all the intersections of streets, intersections of alleys, or of streets and alleys, and at the intersections of streets and alleys with the boundaries of the plat as shown on said plat.

PREPARED AND DRAFTED BY:

Eugene F. Zeimet
EUGENE F. ZEIMET
Registered Professional Engineer
Number 9209
200 Northland Towers
Southfield, Michigan

CERTIFICATION OF APPROVAL BY THE CITY PLANNING COMMISSION

The plat was approved by the Planning Commission of the City of Ann Arbor, Michigan, at a meeting held on the 9th day of March 1965

Joseph W. Edwards
Joseph W. Edwards, Chairman

Richard W. Lavelly
Richard W. Lavelly, Secretary

CERTIFICATE OF MUNICIPAL APPROVAL

The plat was approved by the Common Council of the City of Ann Arbor at a meeting held April 19, 1965 and that the width of lots is in compliance with requirements of Section 30, Act 172, of 1929, as amended, and is in compliance with Section 19a.

Lambert H. Fleming
LAMBERT H. FLEMING, Clerk (Acting)

APPROVAL OF COUNTY PLAT BOARD

This plat was approved on the 4th day of June 1965 by the Washtenaw County Plat Board.

Patricia Newkirk Hardy
Patricia Newkirk Hardy (County Register of Deeds)

J. Martin Remp
J. Martin Remp (Auditor)

Herbert G. Loeffler
Herbert G. Loeffler (Auditor)

John P. Cook
John P. Cook (Auditor)

John H. Flook
John H. Flook (County Drain Commissioner)

COPY

Register's Office
Washtenaw County, S. S.
Plat of Smokler Hutzel
Subdivision
was Recorded this 24th day of
June, A. D., 1965 at 1:30 o'clock
P. M., in Liber 17 of Page 41 thru 43
Patricia Newkirk Hardy
Register of Deeds

I hereby certify this copy is a true copy of map or plat forwarded the Register of Deeds for recording.
Date June 23, 1965
FILED BY Patricia Newkirk Hardy REGISTER GENERAL'S DEPT.
Date June 23, 1965
INDEXED AND APPROVED
Date June 23, 1965
Alison Green
ALISON GREEN
REGISTER GENERAL'S DEPT.