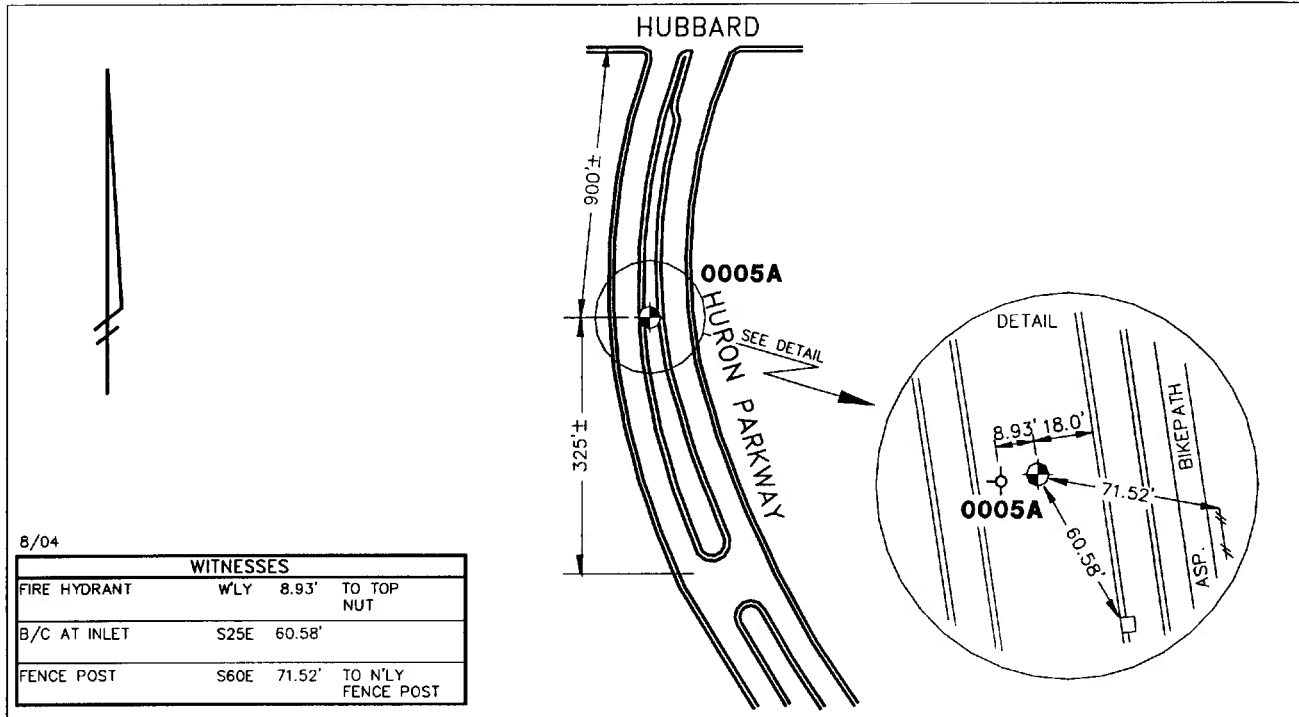


Public Services Area • Project Management Unit  
**CONTROL STATION DATA SHEET**

Approximate Location: Huron Pkwy. South of Hubbard Rd.



8/04

WITNESSES			
FIRE HYDRANT	W'LY	8.93'	TO TOP NUT
B/C AT INLET	S25E	60.58'	
FENCE POST	S60E	71.52'	TO N'LY FENCE POST

STATION 0005A IS LOCATED ON THE GRASS TRAFFIC ISLAND BETWEEN NORTHBOUND AND SOUTHBOUND HURON PARKWAY, APPROXIMATELY 900' SOUTH OF HUBBARD ROAD, SAID STATION BEING IN THE SOUTHEAST 1/4 OF SECTION 22, ANN ARBOR TOWNSHIP IN THE CITY OF ANN ARBOR, MICHIGAN. THE STATION IS LOCATED APPROXIMATELY 325' NORTH OF THE VEHICULAR TURN AROUND BETWEEN HUBBARD ROAD AND GLAZIER WAY AND 8.93' EAST OF THE FIRE HYDRANT. SAID STATION IS A PRIMARY CONTROL STATION AND IS DESCRIBED AS THE 1993 EDITION OF THE CITY OF ANN ARBOR BRASS DISC, SET IN CONCRETE PER DETAIL I AND IS FLUSH WITH THE GROUND. THIS STATION WAS SET BY THE CITY OF ANN ARBOR IN 1993 AND IS PAIRED WITH STATION 0005B.

Horizontal		Vertical	
Latitude (dms)	N 42 17 33.25057	Accuracy	2nd Order Class II
Longitude (dms)	W 83 42 19.56357	Datum	NAVD 88
State Plane Zone	2113 MI South	Elevation in meters	248.771
Scale	0.99995997	Elevation in International feet	816.18
Geoid Height in meters	-33.89		
Convergence (dms)	0 26 60.0		
Accuracy	1st Order		
Datum	NAD 83		No. 0005A
Easting (X) in meters	4054529.196		Sector: EC
Northing (Y) in meters	88251.327		
Easting (X) in International feet	13302261.142	Grid Azimuth to	
Northing (Y) in International feet	289538.474	Control Station 0005B	163°25'50"