

Affidavit regarding width of unmarked easements recorded in Liber 991 of Records on page 349 on the 14th day of June, 1962 W.W.

For Name to Unsub Plot, see Liber 5 of Miscellaneous Records page 464

Examined and Approved: April 27, 1929 J. J. Hurrey

# BARNARD HEIGHTS

A part of the SE 1/4 of Section 31, T2S, R6E, Washtenaw County, Michigan.

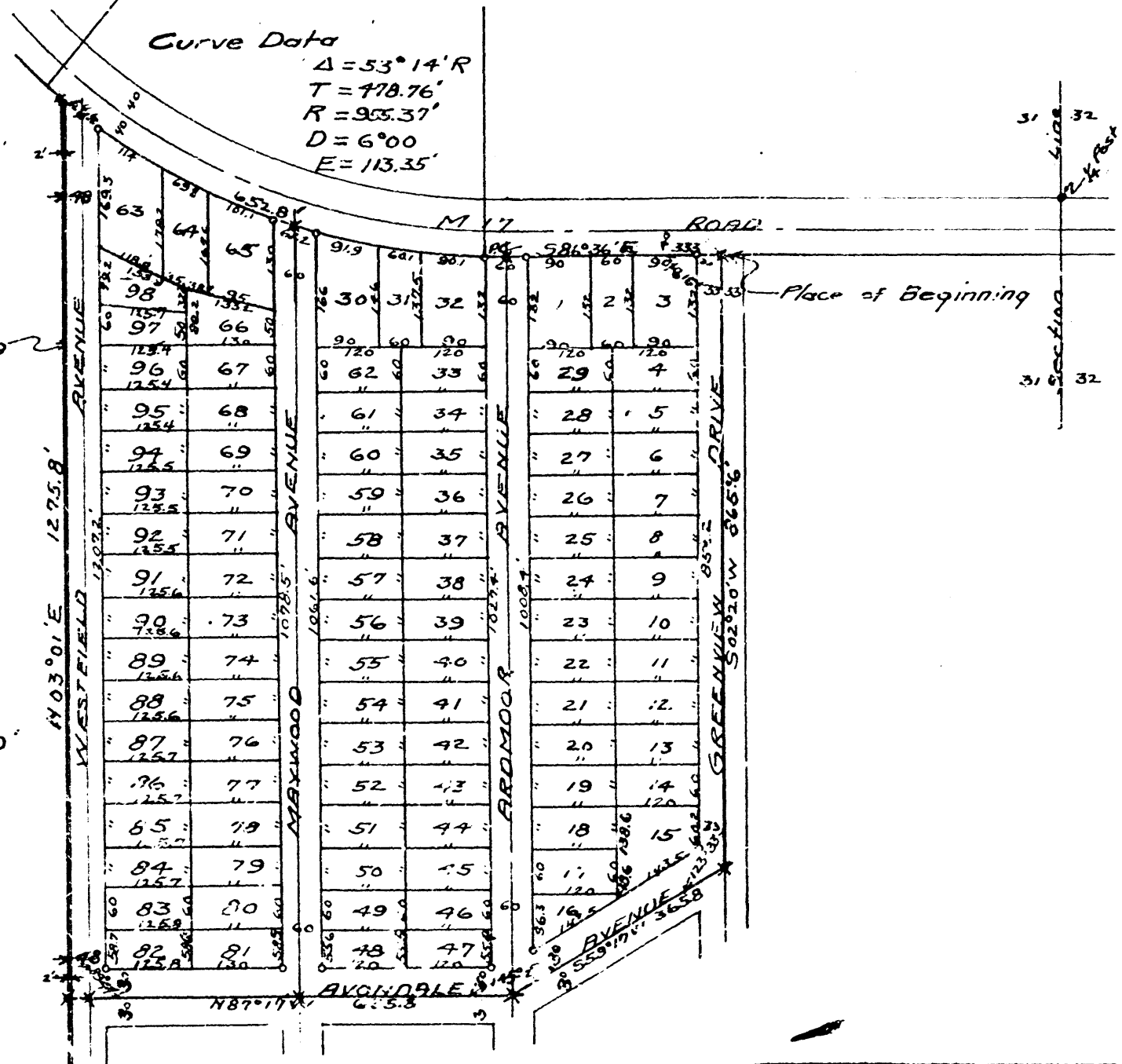
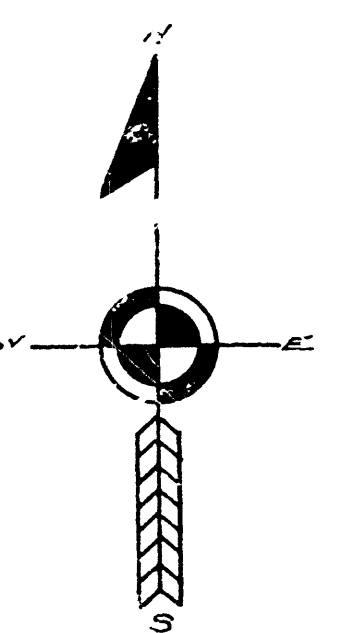
### DEDICATION

Know all men by these presents, That we, Earl S. Barnard, a married man, as proprietor and Minnie L. Barnard, his wife, have caused the land embraced in the annexed plat to be surveyed, laid out and platted, to be known as, "BARNARD HEIGHTS" Washtenaw Co., Mich., and that the streets as shown on said plat are hereby dedicated to the use of the public.

Signed and Sealed in Presence of Earl S. Barnard (L.S.)  
Minnie L. Barnard  
J. M. Covert, Notary  
G. W. Barnard

STATE OF MICHIGAN } ss.  
County of Washtenaw }  
On this 15th day of April, 1929 before me, a Notary Public in and for said county, personally came the above named Earl S. Barnard and Minnie L. Barnard, his wife, known to me to be the persons who executed the above dedication, and acknowledged the same to be their free act and deed.  
Carroll Leonard  
Notary Public, Washtenaw, Co., Mich.  
My Commission Expires July 14, 1930.

Scale 1" = 200'



### DESCRIPTION OF LAND PLATTED

The land embraced in the annexed plat of "BARNARD HEIGHTS" Beginning at a point 80 feet south and 1044.8 feet west of the 1/4 post between Section 31 & 32, T2S, R6E, Washtenaw Co., Michigan; said point being on the S side of M17; thence S02°20'W 865.6 ft.; thence S59°17'W 365.8 ft.; thence N87°17'W 635.8 ft.; thence N03°01'E 1275.8 ft. to the S side of M17 thence along a 6°00' degree curve 452.8 ft. to the P.C.; thence S86°36'E 333.0 ft. along S side of M17 to the place of beginning.

### CERTIFICATE OF MUNICIPAL APPROVAL

This plat was approved by the Township Board of the Township of Ann Arbor at a meeting held April 26, 1929.  
Edwin W. Eaton, Clerk

### CERTIFICATE OF APPROVAL BY THE COUNTY BOARD

This plat was approved on the 15th day of April, 1929.  
Jay L. Pray, Treasurer

### CERTIFICATE OF APPROVAL BY THE BOARD OF COUNTY AUDITORS

Approved by the Board of County Auditors of Washtenaw County, Michigan, this 15th day of April, 1929.  
Walter W. Brown, Auditor

RECORDED IN THE OFFICE OF THE REGISTER OF DEEDS, Washtenaw County, Michigan, on the 29th day of APRIL, A.D. 1929, at 9:00 o'clock A.M. and recorded in the 8th volume of PLATS on page 24.  
John S. [Signature], Register of Deeds

NOTE: All dimensions are given in feet and decimals thereof.

### SURVEYOR'S CERTIFICATE

I hereby certify that the plot herein delineated is a correct one and that permanent metal monuments of not less than one inch in diameter and fifteen inches in length set in a concrete base at least four inches in diameter and forty-eight inches in depth have been placed at points marked thus \* as shown, shown at all angles in the boundaries of the land platted, at all intersections of streets and at the intersections of the streets with the boundaries of the plot as shown on said plat.  
George Waller, Notary  
Registered Civil Engineer

### COUNTY TREASURER CERTIFICATE RELATING TO TAXES

Office of County Treasurer, Washtenaw Co., I hereby certify, that there are no tax liens or titles held by the state on the lands described below, and that there are no tax liens or titles held by individuals on said lands, for the five years preceding the 17th day of April, 1929 and that the taxes for said period of five years are paid as shown by the records of this office.  
Frank H. [Signature], Treasurer  
A part of the SE 1/4 of Section 31, T2S, R6E, Washtenaw County, Michigan

### CERTIFICATE AS TO STATE TRUNK LINE

We hereby certify that said plat appears to include land located on a state trunk line.  
County Plat Board  
Examined and Approved: [Signature]  
Deputy State Highway Commissioner