

I hereby certify this copy to be a true copy of map
as filed forwarded the Register of deeds to
recording.

Date May 15, 1959
FILED IN AUDITOR GENERAL'S OFFICE

Date May 20, 1959
EXAMINED AND APPROVED

Date May 18, 1959

Frank E. Swisher
Auditor General

John E. Swisher Jr.

COPY

Register's Office

Washtenaw County

Plat of Valley Park

Was Recorded this 18 day of

May A.D., 1959 at 2:32 o'clock

in Liber 14 of plat

of Page 56

Patricia M. Hardy

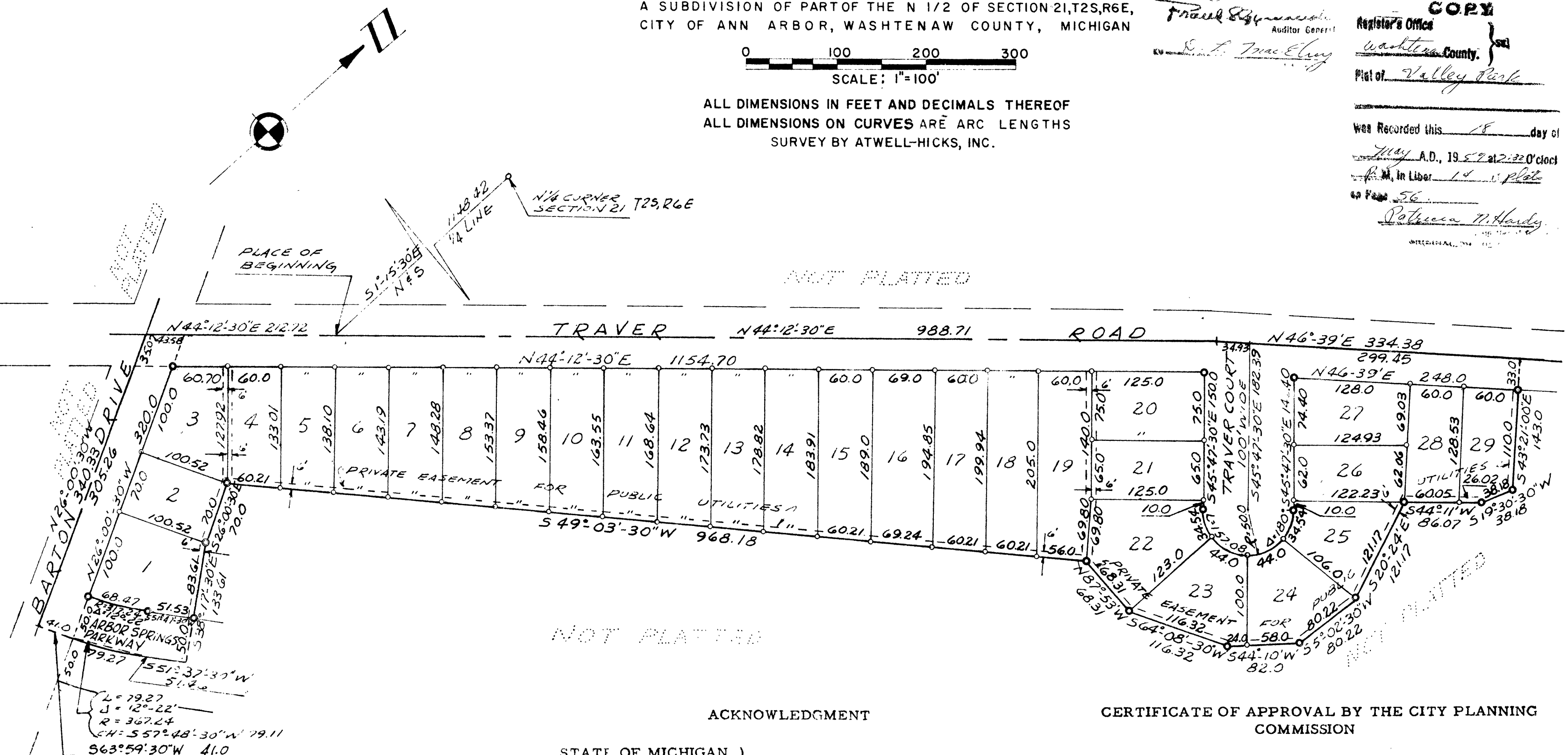
REGISTRAR

VALLEY PARK

A SUBDIVISION OF PART OF THE N 1/2 OF SECTION 21, T2S, R6E,
CITY OF ANN ARBOR, WASHTENAW COUNTY, MICHIGAN



ALL DIMENSIONS IN FEET AND DECIMALS THEREOF
ALL DIMENSIONS ON CURVES ARE ARC LENGTHS
SURVEY BY ATWELL-HICKS, INC.



DEDICATION

KNOW ALL MEN BY THESE PRESENTS, that we, John R. McMullen and Pauline L. McMullen his wife, Paul F. Icerman and Evelyn M. Icerman his wife and George Eddy Popp and Floy Mae Popp his wife, as proprietors and Ann Arbor Federal Savings and Loan Association, a Corporation organized under the Home Owners Loan Act of 1933 of the United States of America by Frederick Schmid Vice President and Gertrude E. Wenger Assistant Secretary, as mortgagee, have caused the land embraced in the annexed plat to be surveyed, laid out and platted to be known as VALLEY PARK a subdivision of part of the N 1/2 of Section 21, T2S, R6E, City of Ann Arbor, Washtenaw County, Michigan and that the road, drive, parkway and court as shown on the plat are hereby dedicated to the use of the public.

Signed and sealed in the Presence of:

S. D. Jones Witness
F. C. Forsythe Witness

John R. McMullen
John R. McMullen
Pauline L. McMullen
Pauline L. McMullen
Paul F. Icerman
Paul F. Icerman
Evelyn M. Icerman
Evelyn M. Icerman
George Eddy Popp
George Eddy Popp
Floy Mae Popp
Floy Mae Popp

Signed and Sealed in the Presence of:

Joann Luckhardt Witness
Richard L. Butcher Witness

ANN ARBOR FEDERAL SAVINGS AND LOAN ASSOCIATION By:
Frederick Schmid
Frederick Schmid
Gertrude E. Wenger
Gertrude E. Wenger

ACKNOWLEDGMENT

STATE OF MICHIGAN)
) ss.
County of Washtenaw)

On this 18 day of May, A.D., 1959 before me, a Notary Public in and for said County, personally came the above named John R. McMullen, Pauline L. McMullen, Paul F. Icerman, Evelyn M. Icerman, George Eddy Popp and Floy Mae Popp, known to me to be the persons who executed the above dedication and acknowledged the same to be their free act and deed.

F. C. Forsythe
Notary Public, Washtenaw County, Michigan
My Commission expires Feb. 1, 1961.

ACKNOWLEDGMENT

STATE OF MICHIGAN)
) ss.
County of Washtenaw)

On this 18 day of May, A.D., 1959, before me, a Notary Public in and for said County, appeared Frederick Schmid and Gertrude E. Wenger, to me personally known, who being each by me duly sworn did say that they are the Vice President and the Assistant Secretary respectively of Ann Arbor Federal Savings and Loan Association, and that the seal affixed to said instrument is the corporate seal of said corporation and that said instrument was signed Frederick Schmid in behalf of said corporation by authority of its Board of Directors and the said Frederick Schmid and Gertrude E. Wenger acknowledged said instrument to be the free act and deed of said corporation.

Richard L. Butcher
Richard L. Butcher
Notary Public, Washtenaw County, Michigan
My Commission expires Feb. 1, 1961.

DESCRIPTION OF LAND PLATTED

The land embraced in the annexed plat of VALLEY PARK, a subdivision of part of the N 1/2 of Section 21, T2S, R6E, City of Ann Arbor, Washtenaw County, Michigan is described as follows:

Commencing at the N 1/4 corner of Section 21, T2S, R6E, Ann Arbor, Washtenaw County, Michigan, thence along the north and south 1/4 line of said section S 1°-15'-30" E 1148.42 feet for a PLACE OF BEGINNING; thence N 44°-12'-30" E 938.71 feet; thence N 46°-39' E 334.38 feet; thence S 43°-21' E 143.0 feet; thence S 19°-30'-30" W 38.18 feet; thence S 44°-11' W 86.07 feet; thence S 20°-24' E 121.17 feet; thence S 5°-02'-30" W 80.22 feet; thence S 44°-10' W 82.0 feet; thence S 64°-08'-30" W 116.32 feet; thence N 87°-53' W 68.31 feet; thence S 49°-03'-30" W 968.18 feet; thence S 26°-00'-30" E 70.0 feet; thence S 38°-17'-30" E 133.61 feet; thence S 51°-37'-30" W 51.46 feet; thence southwesterly 79.27 feet in the arc of a circular curve concave to the northwest, radius 367.24 feet, chord S 57°-48'-30" W 79.11 feet; thence S 63°-59'-30" W 41.0 feet; thence N 26°-00'-30" W 340.33 feet; thence N 44°-12'-30" E 212.72 feet to the place of beginning, containing 29 lots numbered 1 through 29 inclusive.

SURVEYOR'S CERTIFICATE

I hereby certify that the plat hereon delineated is a correct one and that permanent metal monuments consisting of bars not less than one-half inch in diameter and 36 inches in length, or shorter bars of not less than one-half inch in diameter lapped over each other at least 6 inches with an over-all length of not less than 36 inches, encased in a concrete cylinder at least 4 inches in diameter and 36 inches in depth have been placed at points marked thus (O) as thereon shown at all angles in the boundaries of the land platted, at all the intersections of lines of streets, and at the intersections of lines of streets with the boundaries of the plat as shown on said plat.

Robert J. Jagow
Robert J. Jagow
Registered Land Surveyor # 6998

CERTIFICATE OF APPROVAL BY THE CITY PLANNING COMMISSION

This plat was approved by the Planning Commission of the City of Ann Arbor, Michigan at a meeting held on the 18th day of May, 1959.

Dean Coston, Chairman
John E. Swisher Jr., Secretary

CERTIFICATE OF MUNICIPAL APPROVAL

This plat was approved by the Common Council of the City of Ann Arbor at a meeting held May 11, 1959 and that the width of lots is in compliance with requirements of Section 30, Act 172, of 1929, as amended.

Fred J. Looker
Fred J. Looker, Clerk

COUNTY TREASURER'S CERTIFICATE

Office of County Treasurer, Washtenaw County
I hereby certify, that there are no tax liens or titles held by the State on the lands described hereon, and that there are no tax liens or titles held by individuals on said lands, for the five years preceding the 15th day of May, 1959, and that the taxes for said period of five years are all paid, as shown by the records of this office.

This certificate does not apply to taxes, if any, now in process of collection by township, city or village collecting officers.
W. F. Verner
W. F. Verner (County Treasurer)

APPROVAL BY COUNTY PLAT BOARD

This plat was approved on the 15th day of May, 1959 by the Washtenaw County Plat Board.

Patricia Newkirk Hardy County Register of Deeds
Herbert C. Chandler Auditor
J. Martin Remp Auditor
Herbert C. Loeffler Auditor