

ORIGINAL VERNON DOWNS

PART OF THE SOUTHWEST QUARTER OF SECTION 31, TOWN 2 SOUTH, RANGE 6 EAST
A SUBDIVISION OF THE CITY OF ANN ARBOR, WASHTENAW COUNTY, MICHIGAN

SCALE: 1"=100'
NOTE: ALL DIMENSIONS ARE IN FEET AND DECIMALS THEREOF

DEDICATION

KNOW ALL MEN BY THESE PRESENTS, that we George V. Airey and Aurora I. Airey his wife, and Walter Miller and Zella Miller his wife, as proprietors, have caused the land embraced in the annexed plat to be surveyed, laid out and platted, to be known as Vernon Downs, part of the southwest quarter of Section 31, Town 2 South, Range 6 East, a Subdivision of the City of Ann Arbor, Washtenaw County, Michigan, and that the roads, boulevards and places as shown on said plat are hereby dedicated to the use of the public.

Signed and Sealed in the Presence of:

William S. Herbert *George V. Airey* L.S.
William S. Herbert George V. Airey
(Witness) (Witness)

Ruth M. Hollister *Aurora I. Airey* L.S.
Ruth M. Hollister Aurora I. Airey
(Witness) (Witness)

William S. Herbert *Walter Miller* L.S.
William S. Herbert Walter Miller
(Witness) (Witness)

Ruth M. Hollister *Zella Miller* L.S.
Ruth M. Hollister Zella Miller
(Witness) (Witness)

ACKNOWLEDGMENT

STATE OF MICHIGAN) ss
COUNTY OF WASHTENAW)

On this 15 day of June 1954, before me, a Notary Public in and for said county, personally came the above named George V. Airey, Aurora I. Airey, Walter Miller and Zella Miller, known to me to be the persons who executed the above dedication, and acknowledged the same to be their free act and deed.

Margarete E. Metzger
Margarete E. Metzger
Notary Public, Washtenaw County

My commission expires June 29, 1956.

DESCRIPTION

A parcel of land situated in the southwest quarter of Section 31, Township 2 South, Range 6 East, in Ann Arbor Township, Washtenaw County, State of Michigan, and more particularly described as follows:

Commencing at the west 1/4 post of said Section 31; thence N 89° 53' E along the east and west 1/4 line of said Section 2154.03 feet; thence S 0° 14' W 1224.36 feet for a place of beginning; thence S 89° 33' E 1183.77 feet; thence S 0° 26' W 1147.47 feet; thence S 89° 15' W 295.00 feet along the south line of said section and the centerline of Scio Church Road; thence N 0° 26' E 233.00 feet; thence S 89° 11' 20" W 884.69 feet; thence N 0° 14' E 1238.94 feet to the place of beginning, containing 35.86 acres of land more or less.

COUNTY TREASURER'S CERTIFICATE

Office of County Treasurer, Washtenaw County

I hereby certify, that there are no tax liens or titles held by the State on the lands described hereon, and that there are no tax liens or titles held by individuals on said lands, for five years preceding the 15 day of June, 1954, and that the taxes for said period of five years are paid, as shown by the records of this office

This certificate does not apply to taxes, if any, now in process of collection by township, city or village collecting officers.

W. F. Verner
W. F. Verner (County Treasurer)

APPROVAL BY COUNTY PLAT BOARD

This plat was approved on the 12th day of July, 1954 by the Washtenaw County Plat Board.

Thomas A. Fitzgerald
Thomas A. Fitzgerald (County Register of Deeds)

J. Martin Rempp
J. Martin Rempp (Auditor)

Adolph F. Gross
Adolph F. Gross (Auditor)

Herbert G. Loefler
Herbert G. Loefler (Auditor)

MUNICIPAL APPROVAL

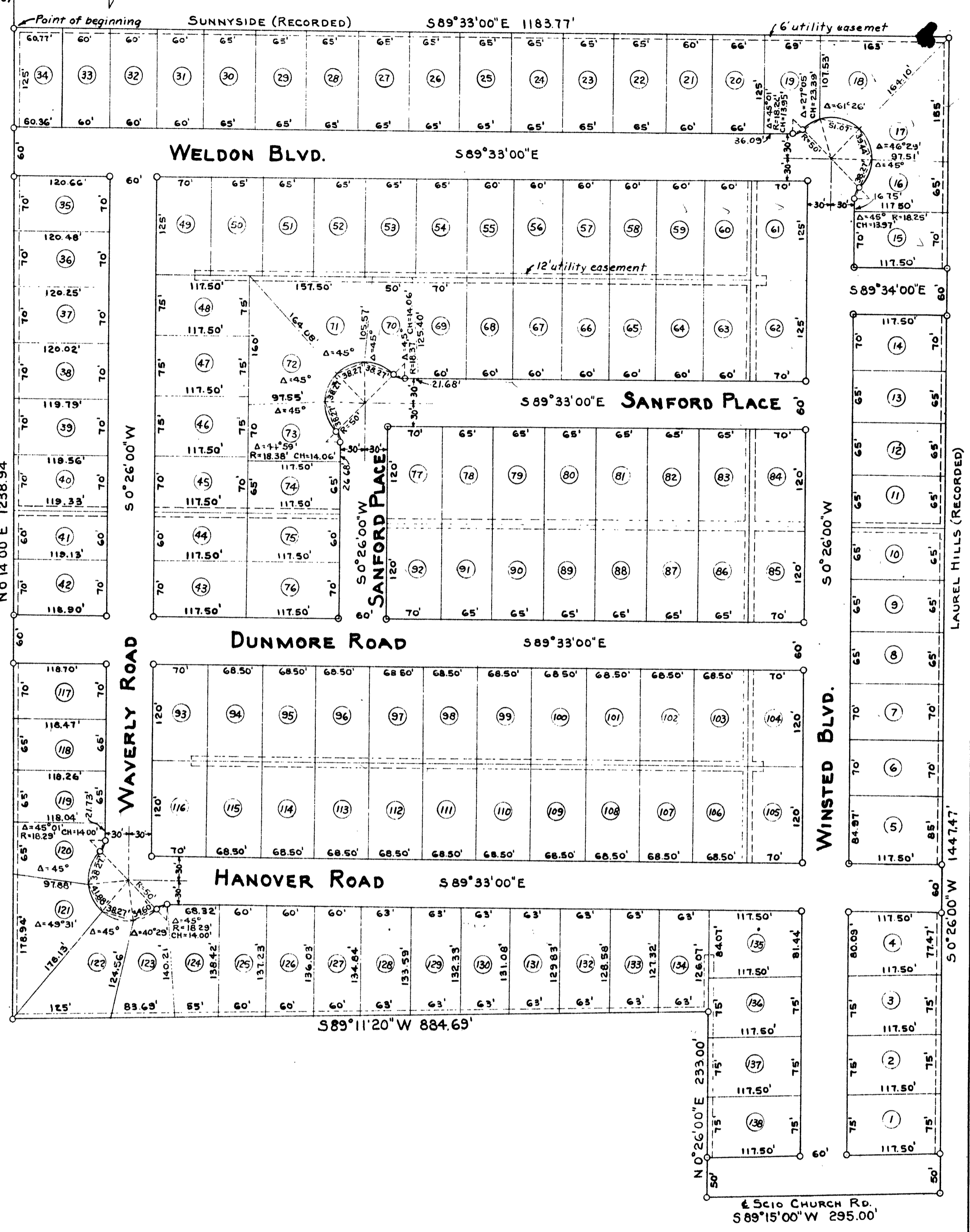
This plat was approved by the Common Council of the City of Ann Arbor at a meeting held July 1954.

Fred J. Looker
Fred J. Looker (Clerk)

APPROVAL BY THE BOARD OF PUBLIC WORKS

This plat was approved by the Board of Public Works of the City of Ann Arbor, at a meeting held July 2 1954.

Fred J. Looker
Fred J. Looker (Clerk)



CERTIFICATE OF APPROVAL BY THE CITY PLANNING COMMISSION

This plat was approved by the Planning Commission of the City of Ann Arbor, Michigan, at a meeting held on the 6 day of JULY, 1954.

John E. Swisher, Jr.
John E. Swisher, Jr. (Chairman)

Sybil K. Bennett
Sybil K. Bennett (Secretary)

SURVEYOR'S CERTIFICATE

I hereby certify that the plat hereon delineated is a correct one and that permanent metal monuments consisting of bars not less than one-half inch in diameter and 48 inches in length, encased in a concrete cylinder at least 4 inches in diameter and 48 inches in depth have been placed at points marked thus (O) as thereon shown at all angles in the boundaries of the land platted, at all the intersections of streets and at the intersections of streets and alleys with the boundaries of the plat as shown on said plat. All dimensions are given in feet and decimals thereof.

Samuel R. Dyer
Samuel R. Dyer
Regis. No. 1160

COPY

Register's Office
Washtenaw County,) ss.
Plat of Vernon Downs
City of Ann Arbor

was Recorded this 20th day of July, A.D., 1954 at 3³⁷ o'clock P.M. in Liber 12 of Plats

on Page 23

Thomas A. Fitzgerald
Thomas A. Fitzgerald
Register of Deeds

ORIGINAL ON FILE

1 OF 1
07/20/1954

I hereby certify that this copy is a true copy of the map or plat forwarded the Register of Deeds for recording.

Date July 14, 1954

Filed in Auditor's Office

Date July 22, 1954

Examined and Approved

Date July 14, 1954

John B. Martin
John B. Martin
AUDITOR GENERAL

W. J. McCoy
W. J. McCoy
PLAT ENGINEER