

CERTIFICATE OF STATE APPROVAL

This Assessor's Plat No. 6, of the city of Ann Arbor, was examined and approved on the day of 1922.

DEPUTY AUDITOR GENERAL.

ASSESSORS PLAT NO. 6.

N THE

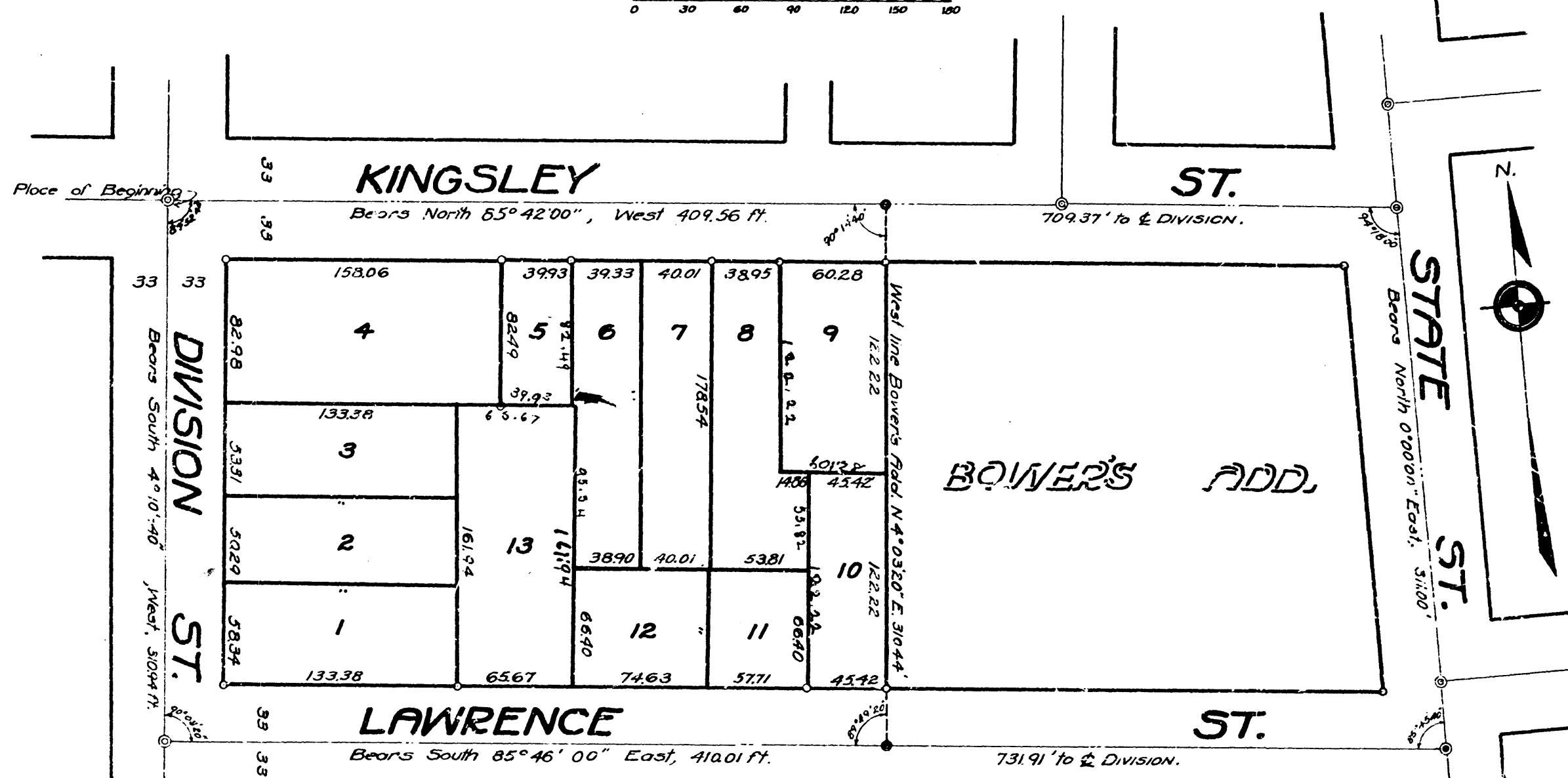
CITY OF ANN ARBOR

WASHTENAW COUNTY MICHIGAN

CERTIFICATE OF RECORD

REGISTER OF DEEDS OFFICE WASHTENAW COUNTY MICHIGAN Received for record of day of 1922, and recorded in Liber of Plats, page

REGISTER OF DEEDS



CERTIFICATE OF MUNICIPAL APPROVAL

By The Common Council Of The City Of Ann Arbor, Washtenaw County, Michigan. This plat was examined and approved by the Common Council of the City of Ann Arbor at a meeting held on the day of 1922.

Isaac G. Reynolds City Clerk

By The Board Of Public Works Of The City Of Ann Arbor, Washtenaw County, Michigan.

This plat was examined and approved by the Board of Public Works of the City of Ann Arbor at a meeting held on the day of 1922.

Isaac G. Reynolds City Clerk

CERTIFICATE OF COUNTY APPROVAL

By The Board Of County Auditors Of Washtenaw County, State Of Michigan.

This plat was examined and approved by the County Board of Auditors of Washtenaw County, Michigan on the day of 1922.

Edmund Smith Chairman

DESCRIPTION

The land included in the annexed Assessor's Plat No. 6, to the city of Ann Arbor, Washtenaw county, State of Michigan, is described as follows: Beginning at a point on the center line of Kingsley Street, 709.37 feet west of the east line of Section 29, Town 2 South Range 6 East, of Michigan Meridian, said line is the E. of State St, thence South 47°40' West, 310.94 feet along the C. of Division St. to its intersection with the C. of Lawrence St, thence South 85°46'00" East, 410.01 feet along the C. of Lawrence St. to its intersection with the West line of Bowers' Addition as recorded in the Register of Deeds Office of Washtenaw County in Liber U of Deeds, page 671; thence North 04°03'20" East 310.44 feet along the west line of Bowers' Add. to the C. of Kingsley St, thence North 85°42'00" West, 409.56 feet along the C. of Kingsley St. to its intersection with the C. of Division St, the place of beginning. The land described is a part of the north east 1/4 Section 29, T. 2 S., R. 6 E.

SURVEYOR'S CERTIFICATE

I hereby certify that the plat hereon delineated is a correct one and that permanent monuments consisting of an iron pipe with brick and stone, have been set at the intersections of all streets marked thus and consisting of an iron pipe of all angles in the boundaries of the land platted and marked thus. The iron pipe are all 3/4 by 30 or larger. All dimensions are given in feet and decimals thereof.

Geo. H. Sandenburgh Registered Civil Engineer

DEDICATION

Know all MEN BY THESE PRESENTS, That I, Herbert W. Crippen, Assessor of the City of Ann Arbor, Washtenaw County, Michigan, by virtue of authority vested by Act 91, of Public Acts of 1839 as amended having been duly authorized by the Common Council of the City of Ann Arbor, have caused the land described in the annexed plat, to be surveyed, laid out and platted, to be known as "Assessor's Plat No. 6, City of Ann Arbor, Washtenaw County, Michigan", and that the streets and alleys as shown are hereby dedicated to the use of the public.

Witnesses: - James W. McAdams, Herbert W. Crippen, Assessor of the City of Ann Arbor, Harold E. Sewell

ACKNOWLEDGMENT

STATE OF MICHIGAN } ss. COUNTY OF WASHTENAW } On this 23rd day of May, A.D. 1922, before me a Notary Public in and for said city of Ann Arbor, personally came the above named Herbert W. Crippen, Assessor of the City of Ann Arbor, known to me to be the person who executed the above dedication and acknowledged the same to be his free act and deed as such assessor. My Commission Expires March 23, 1925.

RECORDED FOR THE 9th day of May A. D. 1922. H. J. ... M. and room 114. Plats on Page 36. P. J. Townsend Register of Deeds. Agnes L. Woody

RECORDED FOR THE 9th day of May A. D. 1922. H. J. ... M. and room 114. Plats on Page 36. P. J. Townsend Register of Deeds. Agnes L. Woody