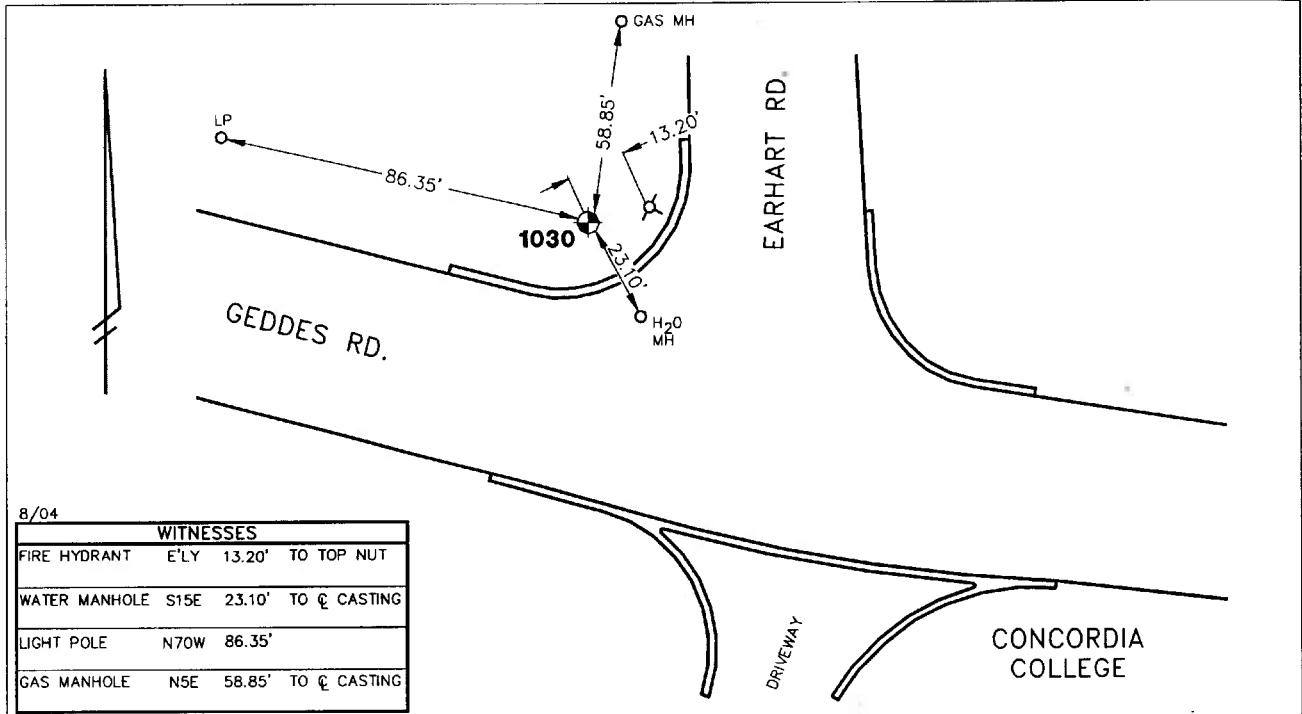


Public Services Area • Project Management Unit
CONTROL STATION DATA SHEET

Approximate Location: Geddes Rd. at Earhart Rd.



8/04

WITNESSES		
FIRE HYDRANT	E'LY	13.20' TO TOP NUT
WATER MANHOLE	S15E	23.10' TO C CASTING
LIGHT POLE	N70W	86.35'
GAS MANHOLE	N5E	58.85' TO C CASTING

STATION 1030 IS LOCATED AT THE NORTHWEST CORNER OF GEDDES ROAD AND EARHART ROAD, SAID STATION BEING IN THE SOUTHEAST 1/4 OF SECTION 26, ANN ARBOR TOWNSHIP IN CITY ANN ARBOR, MICHIGAN. THE STATION IS LOCATED 13.20' WEST OF THE FIRE HYDRANT AND 23.1' NORTHWESTERLY OF A WATER MANHOLE IN THE NORTHERLY LANE OF GEDDES ROAD. SAID STATION IS A VERTICAL CONTROL STATION AND IS DESCRIBED AS THE 1993 EDITION OF THE CITY OF ANN ARBOR BRASS DISC, SET IN CONCRETE PER DETAIL II AND IS FLUSH WITH THE GROUND. THIS STATION WAS SET BY THE CITY OF ANN ARBOR 1993.

Benchmark

Vertical

Accuracy	2nd Order Class II
Datum	NAVD 88
Elevation in meters	247.423
Elevation in International feet	811.75

No. 1030
 Sector: EC