

"FIRST RED OAK SUBDIVISION OF VESPER HEIGHTS"

PART OF THE NORTHEAST QUARTER, SECTION 19,
TOWN TWO SOUTH, RANGE SIX EAST,
WASHTENAW COUNTY, MICHIGAN.

ORIGINAL
10

DEDICATION.

KNOW ALL MEN BY THESE PRESENTS, That we Henry B. Graves, as proprietor, and Mabelle M. Graves, his wife, have caused the land embraced in the annexed plat to be surveyed, laid out and platted, to be known as "FIRST RED OAK SUBDIVISION OF VESPER HEIGHTS, part of the north east quarter, section 19, town two south, range six east, Washtenaw County, Michigan", and that the streets and alleys as shown on said plat are hereby dedicated to the use of the public.

Signed and Sealed in Presence of

Earl H. Cress Henry B. Graves (L.S.)
Louis C. Andrews Mabelle M. Graves (L.S.)

STATE OF MICHIGAN ss
County of Washtenaw

On this 12th day of September 1941, before me, a Notary Public in and for said county, personally came the above named Henry B. Graves and Mabelle M. Graves, his wife, known to me to be the persons who executed the above dedication, and acknowledged the same to be their free act and deed.

Louis C. Andrews
Notary Public, Washtenaw County, Michigan.

My Commission expires March 1943.

DESCRIPTION OF THE LAND PLATTED.

The land embraced in the annexed plat of "FIRST RED OAK SUBDIVISION OF VESPER HEIGHTS, part of the northeast quarter, section 19, town two south, range six east, Washtenaw County, Michigan" is described as follows:
Commencing at the south west corner of the south east quarter of the north east quarter of section 19, town 2 south, range 6 east, Meridian of Michigan; thence north 00°-50'-30" west along the west line of the south east quarter of the north east quarter of said section 312.0 feet FOR A PLACE OF BEGINNING; thence north 89°-09'-30" east 55.0 feet to a point of curve of a circular curve to the right of radius 241.75 feet; thence south easterly 168.78 feet in the arc of a circular curve of radius 241.75 feet to a point of tangency; thence south 50°-50'-30" east 140.0 feet to a point of curve of a circular curve to the left of radius 459.35 feet; thence south easterly in the arc of said curve 96.47 feet; thence north 00°-44'-30" west 1375.5 feet to the center line of Sunset Road; thence west along the center line of Sunset Road 400.0 feet; thence south 00°-50'-30" east 1180.65 feet to the place of beginning.

COUNTY TREASURER'S CERTIFICATE RELATING TO TAXES.
(Sec. 135, Act 206, 1893, as amended - Sec. 4134, C.L. 1915.)

Office of County Treasurer, Washtenaw County.

I hereby certify, That there are no tax liens or titles held by the State on the lands described hereon, and that there are no tax liens or titles held by individuals on said lands, for the five years preceding the 12th day of September 1941, and that the taxes for said period of five years are paid, as shown by the records of this office.

This certificate does not apply to taxes, if any, now in process of collection by township, city or village collecting officers.

Clyde D. Fleming
County Treasurer.

SURVEYOR'S CERTIFICATE.

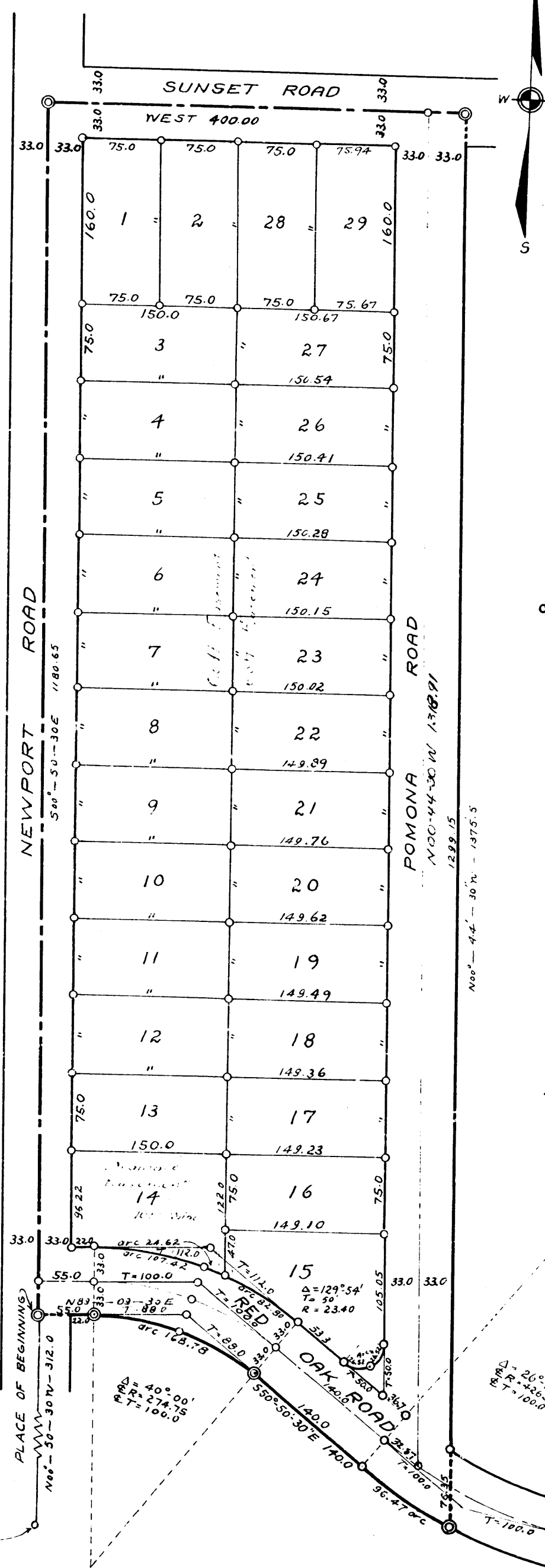
I hereby certify that the plat hereon delineated is a correct one and that permanent metal monuments consisting of bars not less than one-half inch in diameter and 48 inches in length, or shorter bars of not less than one-half inch in diameter lapped over each other at least 6 inches with an over-all length of not less than 48 inches, encased in a concrete cylinder at least 4 inches in diameter and 48 inches in depth have been placed at points marked thus © as thereon shown at all angles in the boundaries of the land platted, at all intersections of streets, intersections of alleys, or of streets and alleys, and at intersections of streets and alleys with the boundaries of the plat as shown on said plat.

Harry H. Atwell
Registered Engineer and Surveyor.



SCALE: ONE INCH = ONE HUNDRED FEET.

Note: All dimensions are shown in feet and decimals thereof.



CERTIFICATE OF APPROVAL BY THE BOARD OF COUNTY ROAD COMMISSIONERS.

This plat has been examined and was approved on the 12th day of September 1941, by the Washtenaw County Board of Road Commissioners.

C. E. Ferguson, Chairman.
Geo. Gill, Member.
H. L. Frisinger, Member.

CERTIFICATE OF MUNICIPAL APPROVAL.

This plat was approved by the Township Board of the Township of Ann Arbor at a meeting held September 12, 1941.

Edward W. Frederick, Clerk.

CERTIFICATE OF APPROVAL BY THE BOARD OF COUNTY AUDITORS.

Approved by the Board of County Auditors of Washtenaw County, Michigan, this 12th day of September 1941.

John S. Miller, Chairman.
L. C. Cushing, Member.
Elmer L. Brown, Member.

CERTIFICATE AS TO COUNTY ROADS.

We hereby certify that said plat appears to include land located on a county road.

John S. Miller, Chairman.
L. C. Cushing, Member.
Elmer L. Brown, Member.
Board of County Auditors.

Examined and approved September 12, 1941.

C. E. Ferguson, Chairman.
Geo. Gill, Member.
H. L. Frisinger, Member.
County Road Commission.

CERTIFICATE OF APPROVAL BY CITY PLANNING COMMISSION.

Approved by the City Planning Commission this 25th day of August 1941.

Edward R. Couper, Chairman.
Eli A. Golup, Secretary.

Examined and Approved

Mayme Jewell Purdy, Deputy Auditor General.

REGISTRY OF DEEDS
Washtenaw County

RECORDED for Record the 15th day of September 1941
at 1:15 P.M.
recovered in Liber. 10 of Plats

Katherine W. Skene
Register of Deeds

S.W. Cor of SE
of NE Sec 19

REGISTERED
 ENGINEER
 HARRY H. ATWELL
 MICHIGAN
 1937-1941