

HEREBY CERTIFY THAT THIS COPY IS A TRUE COPY OF THE MAP OR PLAT FORWARDED TO THE REGISTER OF DEEDS FOR RECORDING.

"FRISINGER LAND COMPANY'S THIRD SUBDIVISION"

COPY

IN THE CITY OF ANN ARBOR, WASHTENAW COUNTY, MICHIGAN.
PART OF THE SOUTH HALF SECTION 33, T.2 S., R.6 E., MERIDIAN OF MICHIGAN.

CERTIFICATE OF APPROVAL BY THE BOARD OF PUBLIC WORKS.

This plat was approved by the Board of Public Works of the City of Ann Arbor at a meeting held July 17, 1941.

COMPARED July 7, 1941
Mayme Jewell Purdy
Mayme Jewell Purdy DEPUTY AUDITOR GENERAL

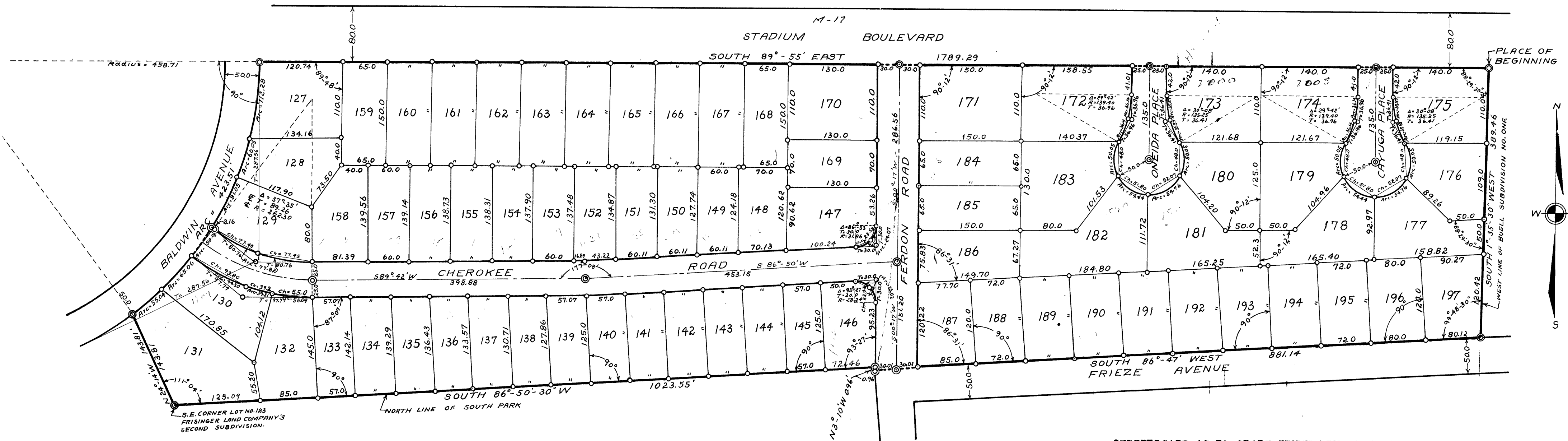
FILED IN AUDITOR GENERAL'S DEPT.

July 17, 1941
Mayme Jewell Purdy
Mayme Jewell Purdy DEPUTY AUDITOR GENERAL

SCALE: ONE INCH = 100 FEET.

NOTE: All dimensions are given in feet and decimals thereof.

Fred C. Perry
FRED C. PERRY, Clerk.



DEDICATION.

KNOW ALL MEN BY THESE PRESENTS, That we the Frisinger Land Company, a Michigan Corporation, by Louis C. Andrews, Vice President, and Edward F. Conlin, Secretary, as proprietor, have caused the land embraced in the annexed plat to be surveyed, laid out and platted to be known as "FRISINGER LAND COMPANY'S THIRD SUBDIVISION, in the City of Ann Arbor, Washtenaw County, Michigan, Part of the south half Section 33, T. 2 S., R. 6 E., Meridian of Michigan" and that the streets and alleys as shown on said plat are hereby dedicated to the use of the public.

Frisinger Land Company.

Signed and Sealed in the Presence of

Wilson H. White
WILSON H. WHITE
Phoebe A. Eisemann
PHOEBE A. EISEMANN
STATE OF MICHIGAN

Louis C. Andrews, Vice President.
Louis C. Andrews
Edward F. Conlin, Secretary.
Edward F. Conlin

County of Washtenaw

On this 21st day of May, A.D. 1941, before me a Notary Public in and for said county appeared Louis C. Andrews and Edward F. Conlin to me personally known, who being each by me duly sworn did say that they are the Vice President and Secretary respectively of the Frisinger Land Company, a Michigan Corporation, and that the seal affixed to said instrument is the corporate seal of said corporation and that said instrument was signed and sealed in behalf of said corporation by authority of its Board of Directors and the said Louis C. Andrews and Edward F. Conlin acknowledged said instrument to be the free act and deed of said corporation.

Phoebe A. Eisemann
PHOEBE A. EISEMANN
Notary Public, Washtenaw County, Michigan.
My commission expires Oct. 22, 1943.

SURVEYOR'S CERTIFICATE.

I hereby certify that the plat hereon delineated is a correct one and that permanent metal monuments consisting of bars of not less than one-half inch in diameter and 48 inches in length, or shorter bars of not less than one-half inch in diameter lapped over each other at least 6 inches with an over-all length of not less than 48 inches, encased in a concrete cylinder at least 4 inches in diameter and 48 inches in depth have been placed at points marked thus © as thereon shown at all angles in the boundaries of the land platted, at all intersections of streets, intersections of alleys, or of streets and alleys, and at intersections of streets and alleys with the boundaries of the plat as shown on said plat.

Harry H. Atwell
Harry H. Atwell
Registered Engineer and Surveyor.

DESCRIPTION OF THE LAND PLATTED.

The land embraced in the annexed plat of "FRISINGER LAND COMPANY'S THIRD SUBDIVISION, in the City of Ann Arbor, Washtenaw County, Michigan, Part of the south half of Section 33, T. 2 S., R. 6 E., Meridian of Michigan" is described as follows:

Beginning at a point in the east line of Section 33, Ann Arbor Township, Washtenaw County, Michigan 1550.42 feet south of the east quarter post of said section, this point being the intersection of the south line of Stadium Boulevard with the east line of said section; thence S 1°-35'-30" W 389.46 feet along the west line of Buell Subdivision Number One; thence S 86°-47' W 881.14 feet along the north line of Frieze Avenue; thence N 3°-10' W 0.96 feet; thence S 86°-50'-30" W 1023.55 feet along the north line of South Park to the south east corner of lot number 123 of Frisinger Land Company's Second Subdivision; thence N 24°-14' W 143.81 feet along the easterly line of said lot to the south easterly line of Baldwin Avenue; thence north easterly and northerly in the easterly line of Baldwin Avenue in the arc of a circular curve of radius 458.71 feet a distance of 423.51 feet to the south line of Stadium Boulevard, the curve above mentioned beginning at a point in the south line of Stadium Boulevard 1789.29 feet N 89°-55' W from the place of beginning, the tangent being at right angles to Stadium Boulevard and 287.56 feet in length; thence S 89°-55' E 1789.29 feet to the place of beginning.

CERTIFICATE OF MUNICIPAL APPROVAL.

This plat was approved by the Common Council of the City of Ann Arbor at a meeting held July 17, 1941.
Fred C. Perry
FRED C. PERRY, Clerk.

CERTIFICATE OF APPROVAL BY THE BOARD OF COUNTY AUDITORS.

Approved by the Board of County Auditors of Washtenaw County, Michigan, this 23rd day of May, 1941.

John S. Miller, Chairman.
JOHN S. MILLER
L. O. Cushing
L. O. CUSHING
Elmer L. Brown
ELMER L. BROWN

Examined and Approved

July 7, 1941
Mayme Jewell Purdy
Mayme Jewell Purdy Deputy Auditor General

CERTIFICATE AS TO STATE TRUNK LINE OR FEDERAL AID ROADS.

We hereby certify that said plat appears to include land located on a state trunk line or federal aid road.

John S. Miller
JOHN S. MILLER
L. O. Cushing
L. O. CUSHING
Elmer L. Brown
ELMER L. BROWN
Board of County Auditors.

Width and location of state trunk line and federal aid road O.K.

State Highway Commissioner.

CERTIFICATE OF APPROVAL BY CITY PLANNING COMMISSION.

Approved by the City Planning Commission this 17th day of May, 1941.

Edward M. Couper, Chairman.
EDWARD M. COUPER
Eli H. Gallup, Secretary.
ELI H. GALLUP

COUNTY TREASURER'S CERTIFICATE RELATING TO TAXES.
(Sec. 135, Act 206, 1893, as amended - Sec. 4134, C. L. 1915.)
Office of County Treasurer, Washtenaw County.

I hereby certify, That there are no tax liens or titles held by the State on the lands described hereon, and that there are no tax liens or titles held by individuals on said lands, for the five years preceding the 17th day of May, 1941 and that the taxes for said period of five years are paid as shown by the records of this office.

This certificate does not apply to taxes, if any, now in process of collection by township, city or village collecting officers.

Clyde D. Fleming, County Treasurer.
CLYDE D. FLEMING

COPY
Register's Office
Washtenaw County, ss.
Plat of Frisinger Land Company's Third Subdivision, City of Ann Arbor
was Recorded this 7th day of July, A.D., 1941, at 2:50 o'clock P. M. in Liber 10 of Plats
on Page 5
Katherine W. Skau
Katherine W. Skau
Register of Deeds

Finding that width and location of State Trunk Line and Federal Aid Roads conform to plans on file, I hereby approve this plat.
Donald Kennedy
DONALD KENNEDY
State Highway Commissioner.