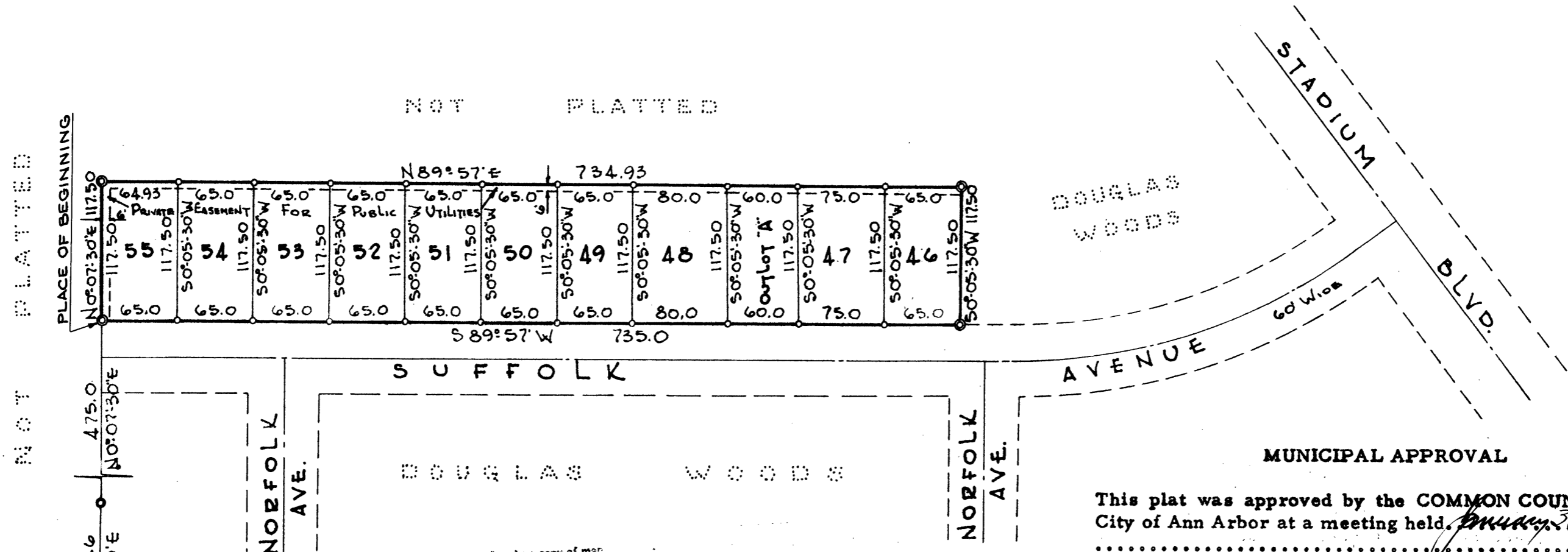
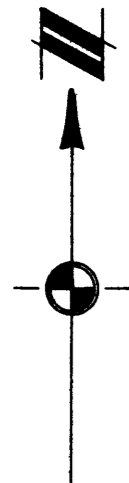


DOUGLAS WOODS NO. 2

A SUBDIVISION OF PART OF THE NW 1/4 OF SECTION 31, T2S, R6E,
 CITY OF ANN ARBOR, WASHTENAW COUNTY, MICHIGAN



ALL DIMENSIONS IN FEET AND DECIMALS THEREOF
 ALL DIMENSIONS ON CURVES ARE ARC LENGTHS
 SURVEY BY ATWELL-HICKS, INC.



W 1/4 Cor. Sec. 31
 T2S, R6E
 N 89° 55' E 1466.76'
 E & W 1/4 LINE

I hereby certify this copy is a true copy of map or plat forwarded the Register of Deeds for recording.
 Date April 17, 1961
 FILED IN AUDITOR GENERAL'S DEPT.
 Date April 19, 1961
 EXAMINED AND APPROVED
 Date April 17, 1961
 By Otis M. Smith
 OTIS M. SMITH
 AUDITOR GENERAL
 By Richard E. Lomax
 Richard E. Lomax - Plat Examiner

COMM
 Registrar's Office
 Washtenaw County
 FILED
Douglas Woods No. 2
 was Recorded this 17th day of
April, A.D., 1961 at Ann Arbor
 P.M. in Liber 15 of Plats
 on Page 51
Patricia Newkirk Hardy

MUNICIPAL APPROVAL
 This plat was approved by the COMMON COUNCIL of the City of Ann Arbor at a meeting held January 24, 1961

CITY CLERK'S CERTIFICATE
 Office of City Clerk, City of Ann Arbor
 I hereby certify, that the width and depth of lots shown on this plat are in compliance with rules and regulations of the City of Ann Arbor and the requirements as to width and depth of Sec. 30 of Act 172, Public Acts of 1929 as amended by Act 186 Public Acts of 1954.

DEDICATION
 KNOW ALL MEN BY THESE PRESENTS, that we, Robert C. Bliss and Evelyn D. Bliss, his wife, Franklin C. Kuenzel and Clara L. Kuenzel, his wife, Chester R. Stackhouse and Sophie M. Stackhouse, his wife, and Virgil C. Smith and Eleanor Jane Smith, his wife, as proprietors, have caused the land embraced in the annexed plat to be surveyed, laid out and platted to be known as DOUGLAS WOODS NO. 2 a subdivision of part of the NW 1/4 of Section 31, T2S, R6E, City of Ann Arbor, Washtenaw County, Michigan.
 Signed and Sealed in the Presence of:

DESCRIPTION OF LAND PLATTED
 The land embraced in the annexed Plat of DOUGLAS WOODS NO. 2 a subdivision of part of the NW 1/4 of Section 31, T2S, R6E, City of Ann Arbor, Washtenaw County, Michigan is described as follows:

Commencing at the W 1/4 corner of Section 31, T2S, R6E, Ann Arbor Township, Washtenaw County, Michigan; thence along the E & W 1/4 line of said Section 31 N 89° -53' E 1466.76 feet; thence N 0° -19' E 601.46 feet; thence N 0° -07' -30" E 475.0 feet for a PLACE OF BEGINNING; thence continuing N 0° -07' -30" E 117.50 feet; thence N 89° -57' E 734.93 feet; thence S 0° -05' -30" W 117.50 feet; thence S 89° -57' W 735.0 feet to the place of beginning, being a part of the NW 1/4 of Section 31 and containing 10 lots numbered 46 through 55 inclusive and one outlot lettered "A".

CERTIFICATE OF APPROVAL BY THE CITY PLANNING-COMMISSION
 This plat was approved by the Planning Commission of the City of Ann Arbor, Michigan at a meeting held on the 24th day of JANUARY, 1961

SURVEYOR'S CERTIFICATE
 I hereby certify that the plat hereon delineated is a correct one and that permanent metal monuments consisting of bars not less than one-half inch in diameter and 36 inches in length, or shorter bars of not less than one-half inch in diameter lapped over each other at least 6 inches with an over-all length of not less than 36 inches, encased in a concrete cylinder at least 4 inches in diameter and 36 inches in depth have been placed at points marked thus (O) as thereon shown at all angles in the boundaries of the land platted, at all the intersections of lines of streets, and at the intersections of lines of streets with the boundaries of the plat as shown on said plat.

COUNTY TREASURER'S CERTIFICATE
 Office of County Treasurer, Washtenaw County
 I hereby certify, that there are no tax liens or titles held by the State on the lands described hereon, and that there are no tax liens or titles held by individuals on said lands for the five years preceding the 16th day of April, 1961 and that the taxes for said period of five years are all paid, as shown by the records of this office.
 This certificate does not apply to taxes, if any, now in process of collection by township, city or village collecting officers.

ACKNOWLEDGMENT
 STATE OF MICHIGAN)
) ss.
 County of Washtenaw
 On this 24th day of January, 1961, before me a Notary Public in and for said County, personally came the above named Robert C. Bliss and Evelyn D. Bliss, his wife, Franklin C. Kuenzel and Clara L. Kuenzel, his wife, Chester R. Stackhouse and Sophie M. Stackhouse, his wife, and Virgil C. Smith and Eleanor Jane Smith, his wife known to me to be the persons who executed the above dedication, and acknowledged the same to be their free act and deed.

.....
 Robert J. Jagow
 Registered Land Surveyor # 6998

APPROVAL BY COUNTY PLAT BOARD
 This plat was approved on the 23rd day of April, 1961 by the Washtenaw County Plat Board.

.....
 Notary Public, Washtenaw County
 Mae M. Lascelle
 My Commission expires 4-4-59

.....
 Patricia Newkirk Hardy
 County Register of Deeds
 John P. Cook
 Auditor
 J. Martin Rempp
 Auditor
 John H. Flook
 County Drain Commissioner
 Herbert G. Loeffler
 Auditor