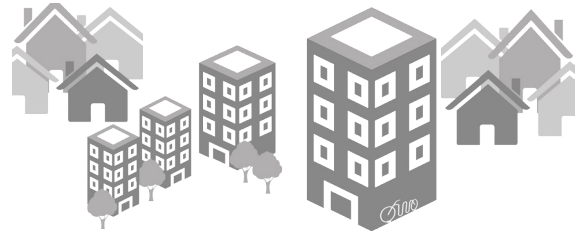


# Bicycle Parking Manual for Businesses



Produced by the City of Ann Arbor  
August 2015  
For Additional Information, please contact:  
Jeff Kahan, City Planner  
City of Ann Arbor  
(734) 794-6000 x. 42614  
JKahan@a2gov.org



Investing in safe and convenient bicycle parking can benefit your business. More and more people in Ann Arbor are taking advantage of the convenience, flexibility and cost-effectiveness of traveling by bicycle.

One of the most crucial parts of that travel is a safe and secure place to park one's bike. Having such a place in front of your business can increase your overall parking capacity at a small cost, attract customers who

ride bicycles, eliminate the clutter and damage of unplanned bicycle parking and encourage customers that generally drive to try biking instead.

This guide will walk you through the relatively simple process of installing bike parking at your business. It will also illustrate the design guidelines that apply. It is important to note that bicycle parking cannot be installed in the public right of way without special permission.

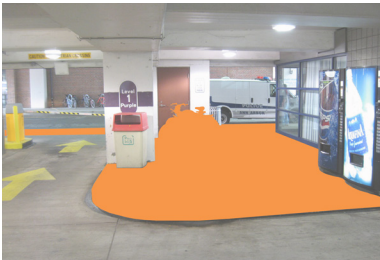


## Location Requirements

- Exterior bicycle parking facilities shall be placed in close proximity to main building entrances and in a location that is visible and easily accessible.
- A physical barrier, designed to prevent motor vehicles from driving into bicycle parking areas, shall be provided between bicycle and motor vehicle parking when bicycle-parking areas are located within a parking structure or lot.
- Bicycle parking in parking structures shall be located on the street level and near an entrance and public sidewalk.



The bicycle parking is clearly visible from the store entry. Additionally, it is accessible from the street by the paved sidewalk.



Notice that the bikes are physically separated from the motor-vehicle drive and are located near both the entrance and the public sidewalk.



## Enclosed Storage Area Requirements

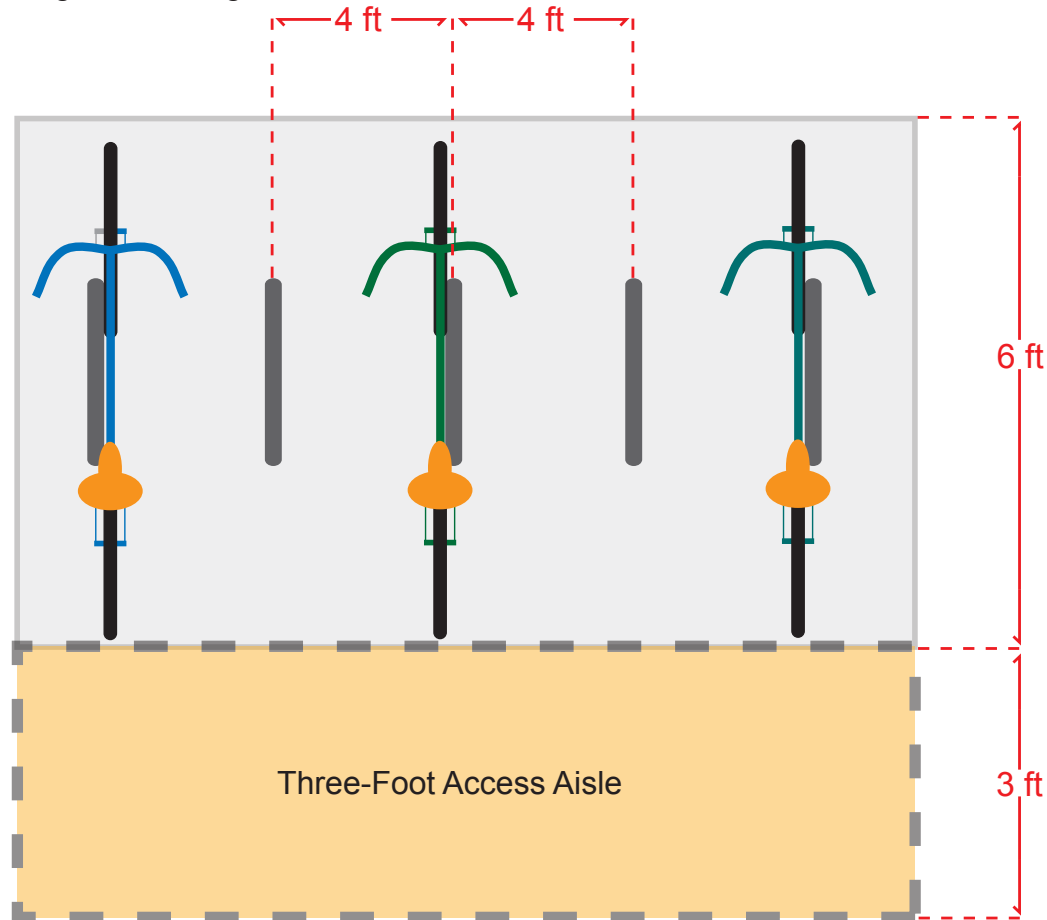
- Asphalt, concrete, porous pavement, pavers or brick shall connect the enclosed bicycle storage area to a sidewalk or driveway.
- Enclosed bicycle storage constructed exterior to a building shall comply with the zoning regulations for accessory structures.

*Contact a City Planner if contemplating modifications to bicycle parking facilities for existing apartment, office or commercial buildings.*

## Space & Size Requirements

All racks are required to have spaces that are at least two-feet wide and six-feet long with a three-foot access aisle. Please note that the placement of bike parking facilities cannot interfere with the required 6-foot pedestrian walkway or any ADA required ramps.

Credit can be extended for creative designs that use the available space more efficiently and store the equivalent number of bicycles in a smaller area, subject to staff review. Wall mounted spaces are appropriate for long term storage.



## Lighting Requirements

**Minimum Illumination Level:**  
0.4 foot candelas

Bicycle parking spaces shall be illuminated from one-half hour after sunset to one-half hour before sunrise, at the levels specified at left.

**Maximum Uniformity Ratio:**  
10 to 1

The lighting of such areas must be designed to provide illumination levels at all unobstructed points of the bicycle parking area. Illumination levels shall be measured three feet above the lot surface.

## Downtown Business Owners

Business owners located within the Ann Arbor Downtown Development Authority's (DDA) boundary should contact the DDA for assistance in acquiring bicycle parking facilities. The DDA works with downtown business owners to place a variety of bicycle parking facilities, please see below for examples. Requests for parking facilities are periodically reviewed by the DDA.

When contacting the DDA, business owners should be prepared to provide the following information:

- Contact name
- Phone number
- Business location (address)
- Requested location of rack and anticipated usage

The DDA can be reach via phone at 734.994.6697. The DDA's office is located at: 150 South Fifth Avenue, Suite 301, Ann Arbor, MI 48104.

An overview and detailed map of the DDA boundary can be found on the following page.

## Examples of DDA Bicycle Parking Facilities

The DDA's portfolio of current bicycle parking facilities include inverted u's, on-street bicycle racks, bike lockers, a bike house (located inside the Maynard Parking Garage), and a variety of unique bicycle hoops.

**Bicycle Hoops**



**Bicycle Racks**

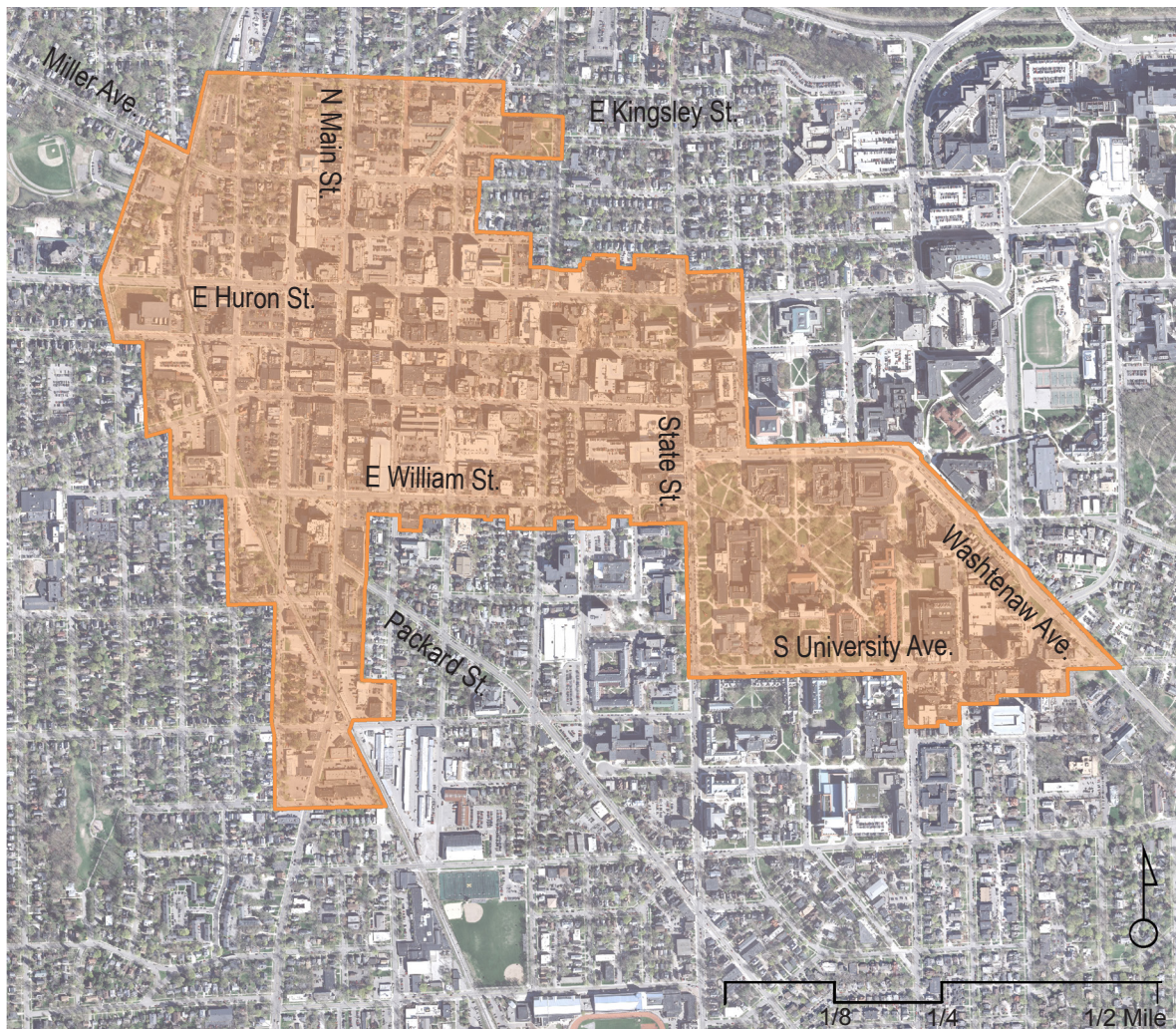
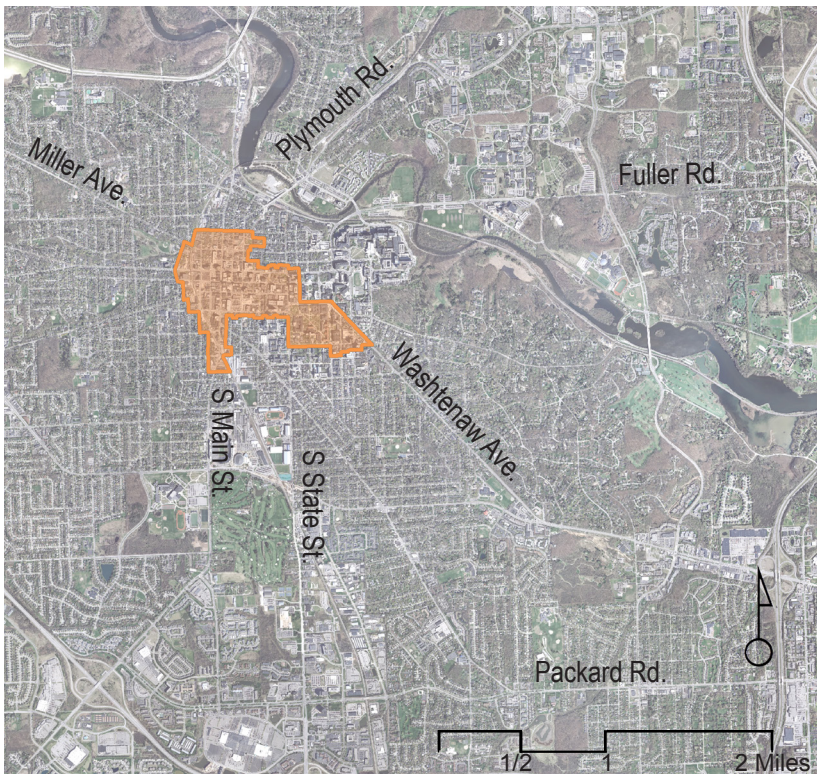


**Maynard Bike House**



# The Downtown Development Authority Boundary

The orange outline relates to the boundaries of the Ann Arbor Downtown Development Authority (DDA). Business owners within the DDA should contact the DDA on the placement of bicycle parking facilities.



## Bicycle Parking Space

An area and facility used for the securing of bicycles. This term shall include enclosed bicycle storage, covered bike racks or fixed bicycle racks which meet the requirements for this chapter for bicycle parking.

Ann Arbor City Code, Chapter 59, section 5:161 Definitions

## Facility Standards

### Class A

#### *Medium to Long-term Parking*

Enclosed storage lockers

- Enclosed bicycle parking shed
- A room within a building, which contains individual storage lockers or rack space
- Individual private garages
- Approximate cost for a bike locker for two bikes = \$2,100 without installation



### Class B

#### *Short to Medium-term Parking*

Covered bicycle racks

- A building overhang or a free standing cover with a minimum clearance of 7 feet above grade shall cover the racks
- Approximate cost for canopy (depends on size and design) = \$1,000 to \$10,000



### Class C

#### *Short-term Parking*

Fixed bicycle racks

- Any rack that meets the definition of a bicycle rack as stated above
- Approximate cost for one hoop style rack = \$115 to \$160 without installation



## Bike Rack & Locker Suppliers

These vendors either manufacture or supply racks and bike lockers. Please feel free to contact them for pricing and specifications for your location. This information is provided for the convenience of the user; the City of Ann Arbor does not endorse these vendors.

### **American Bicycle Security Company**

P.O. Box 7359  
Ventura, California 93006  
Phone: 800.245.3723  
Website: [www.ameribike.com](http://www.ameribike.com)

### **Duo-Gard**

40442 Koppernick Rd.  
Canton, Michigan 48187  
Phone: 734.207.9700  
Website: [www.duo-gard.com](http://www.duo-gard.com)

### **Bike Security Racks Company, Inc.**

12 Sawyer Loop  
Wentworth, New Hampshire 03282  
Phone: 855.545.2757  
Website: [www.bikeracks.com](http://www.bikeracks.com)

### **Function First Bike Security, Inc.**

3935 North Country Club Road #25  
Tucson, Arizona 85716  
Phone: 520.322.9626  
Website: [www.bikerack.com](http://www.bikerack.com)

### **Creative Pipe, Inc.**

P.O. Box 2458  
Rancho Mirage, California 92270  
Phone: 800.644.8467  
Website: [www.creativepipe.com](http://www.creativepipe.com)

### **The Park Catalog**

3350 NW Boca Raton Blvd., Suite B2  
Boca Raton, Florida 33431  
Phone: 800.695.3503  
Website: [www.theparkcatalog.com](http://www.theparkcatalog.com)

### **Cycle-Safe, Inc.**

5211 Cascade Road SE, Suite 210  
Grand Rapids, Michigan 49546  
Phone: 888.950.6531  
Website: [www.cyclesafe.com](http://www.cyclesafe.com)

### **Park-A-Bike**

708 Alhambra Boulevard  
Sacramento, California 95816  
Phone: 800.630.7225  
Website: [www.parkabike.com](http://www.parkabike.com)

### **DERO Bike Rack Company**

504 Malcom Avenue SE, Suite 100  
Minneapolis, Minnesota 55414  
Phone: 888.337.6729  
Website: [www.dero.com](http://www.dero.com)

### **Saris Cycling Group**

5253 Verona Road  
Madison, Wisconsin 53711  
Phone: 800.783.7257  
Website: [www.sarisparking.com](http://www.sarisparking.com)

### **Dobra Design**

5139 Somerville Street  
Vancouver, British Columbia V5W 3H3  
Phone: 888.642.3722  
Website: [www.dobradesign.com](http://www.dobradesign.com)

## Questions?

For the full text of the City of Ann Arbor's bike parking requirements please refer to:

Ann Arbor City Code, Chapter 59, section 5:167 Required Parking

For the full text of the City of Ann Arbor's bike parking design standards please refer to:

Ann Arbor City Code, Chapter 59, section 5:168.1 Design Standards

The Ann Arbor's City Code is available online at:

<http://library.municode.com/index.aspx?clientId=11782&stateId=22&stateName=Michigan>

Any questions regarding bicycle parking should be directed to:

Jeff Kahan, City Planner  
City of Ann Arbor  
(734) 794-6000, x.42614  
[jkahan@a2gov.org](mailto:jkahan@a2gov.org)

Any questions regarding bicycle parking facilities downtown should be directed to:

Susan Pollay, Executive Director  
Ann Arbor Downtown Development Authority  
(734) 994-6697  
[dda@a2dda.org](mailto:dda@a2dda.org)

Any questions regarding bicycle commuting or other alternative commuting options should be directed to:

Nancy Shore, Program Director  
[getDowntown](http://getDowntown.org)  
(734) 214-0100  
[nancy@getdowntown.org](mailto:nancy@getdowntown.org)



**City of Ann Arbor**  
**301 East Huron Street**  
**Ann Arbor, MI 48104**  
**[www.a2gov.org](http://www.a2gov.org)**

Printed on Recycled Paper

Prepared by Systems  
Planning  
August 2015