

C:\Users\daykman\Documents\Projects\2014 Sewer Lining Project\2013019LP1.dwg Dwg Created: 24-Feb-14 - \_a2 standard bw.stb - Plot Date: 29-Apr-14



**811**  
Know what's below.  
Call before you dig.

REV.	DESCRIPTION	DATE	DRAWN	CHECKED

CITY OF ANN ARBOR  
PUBLIC SERVICES  
301 EAST HURON STREET  
ANN ARBOR, MI 48106-1647  
www.a2gov.org

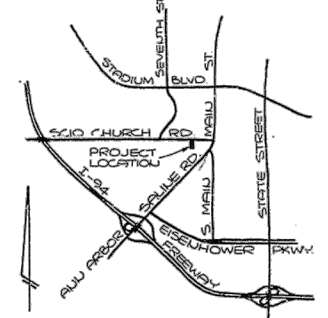
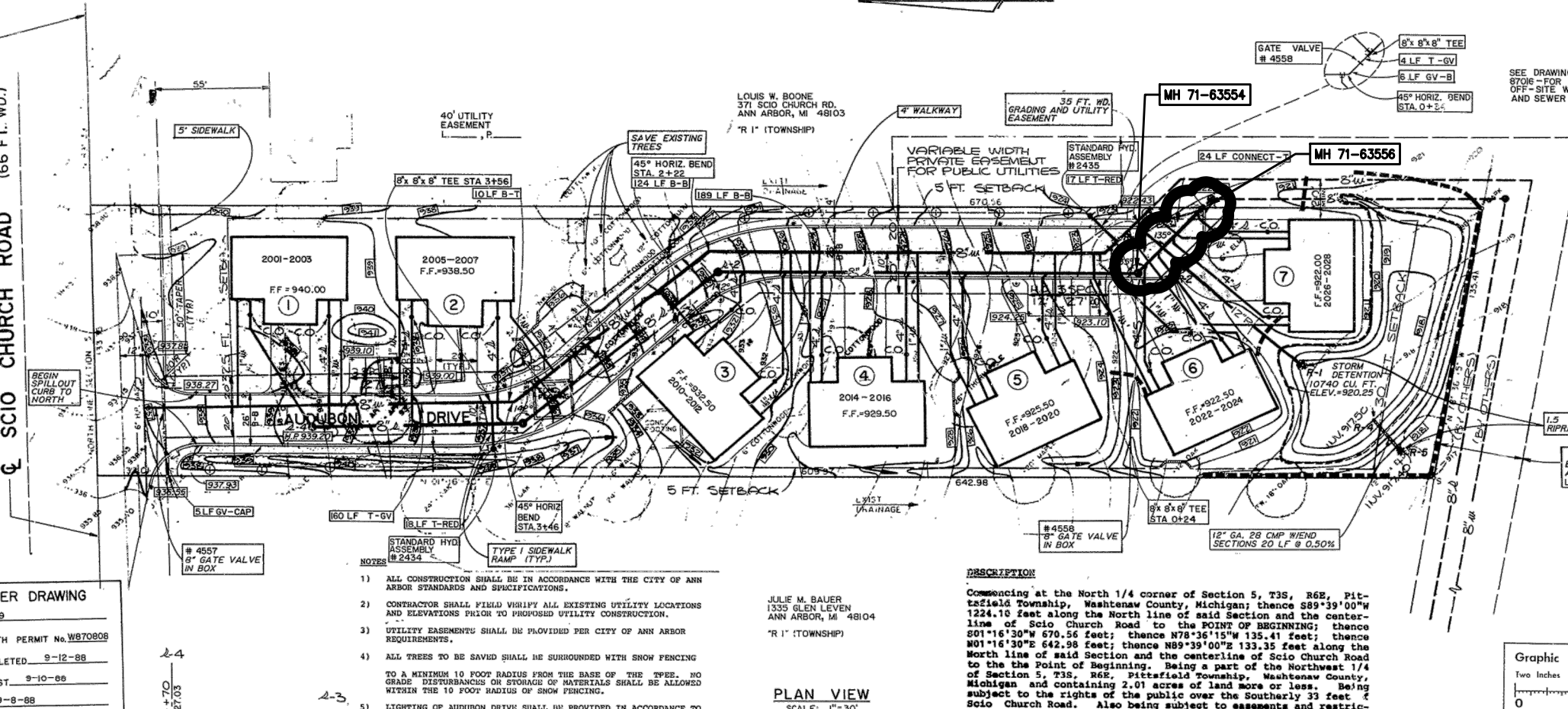
**PROJECT MANAGEMENT - PUBLIC SERVICES - CITY OF ANN ARBOR**  
2014 SEWER LINING PROJECT  
AUDUBON DRIVE CROSS LOTS  
SANITARY SEWER

SCALE: NTS  
DRAWING No. 2013019-19A  
SHEET No. 13A OF 51

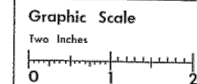


S:\Project Management\Design\201301915.dwg Created: 5-Feb-14 10:20:14 AM Plot Date: 29-Apr-14

SCIO CHURCH ROAD (66 FT. WD.)



- LEGEND** (PROPOSED FEATURES)
- NO PARKING SIGN
  - SUGAR MAPLE MK. 2 1/2" CALIPER
  - CONCRETE WALKWAY
  - RAMP
  - LANDSCAPE SCREEN 3 1/2" HIGH YEW (TAXUS MEDIA) 3' O.C.
  - DRAINAGE FLOW
  - STRAW BALES
  - EXISTING STORM
  - PROPOSED STORM
  - EXISTING SANITARY
  - PROPOSED SANITARY
  - EXISTING WATER
  - PROPOSED WATER



**OWNER / DEVELOPER**  
 JOSEPH B. GRAMMATICO  
 2275 CHAUCER COURT  
 ANN ARBOR, MI 48103  
 PHONE: 769-1414

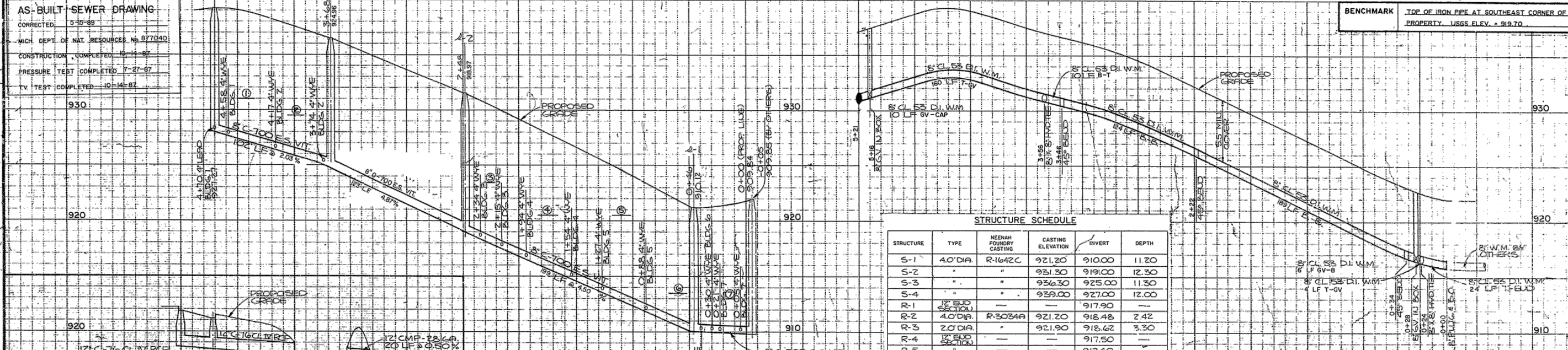
**AS-BUILT WATER DRAWING**  
 CORRECTED 5-15-89  
 MICH. DEPT. OF HEALTH PERMIT No. W870806  
 CONSTRUCTION COMPLETED 9-12-88  
 BACTERIOLOGICAL TEST 9-10-88  
 PRESSURE TEST 9-8-88

**AS-BUILT SEWER DRAWING**  
 CORRECTED 5-15-89  
 MICH. DEPT. OF NAT. RESOURCES No. 877040  
 CONSTRUCTION COMPLETED 10-14-87  
 PRESSURE TEST COMPLETED 7-27-87  
 TV TEST COMPLETED 10-14-87

- NOTES**
- ALL CONSTRUCTION SHALL BE IN ACCORDANCE WITH THE CITY OF ANN ARBOR STANDARDS AND SPECIFICATIONS.
  - CONTRACTOR SHALL FIELD VERIFY ALL EXISTING UTILITY LOCATIONS AND ELEVATIONS PRIOR TO PROPOSED UTILITY CONSTRUCTION.
  - UTILITY EASEMENTS SHALL BE PROVIDED PER CITY OF ANN ARBOR REQUIREMENTS.
  - ALL TREES TO BE SAVED SHALL BE SURROUNDED WITH SNOW FENCING TO A MINIMUM 10 FOOT RADIUS FROM THE BASE OF THE TREE. NO GRADE DISTURBANCES OR STORAGE OF MATERIALS SHALL BE ALLOWED WITHIN THE 10 FOOT RADIUS OF SNOW FENCING.
  - LIGHTING OF AUDUBON DRIVE SHALL BE PROVIDED IN ACCORDANCE TO THE CITY OF ANN ARBOR REQUIREMENTS.

**DESCRIPTION**  
 Commencing at the North 1/4 corner of Section 5, T3S, R6E, Pittsfield Township, Washtenaw County, Michigan; thence S89°39'00"W 1224.10 feet along the North line of said Section and the centerline of Scio Church Road to the POINT OF BEGINNING; thence S01°16'30"W 670.56 feet; thence N78°36'15"W 135.41 feet; thence N01°16'30"W 642.98 feet; thence N89°39'00"E 133.35 feet along the North line of said Section and the centerline of Scio Church Road to the Point of Beginning. Being a part of the Northwest 1/4 of Section 5, T3S, R6E, Pittsfield Township, Washtenaw County, Michigan and containing 2.01 acres of land more or less. Being subject to the rights of the public over the Southern 33 feet of Scio Church Road. Also being subject to assessments and restrictions of record, if any.

**PLAN VIEW**  
 SCALE: 1"=30'



**STRUCTURE SCHEDULE**

STRUCTURE	TYPE	NEENAH FOUNDRY CASTING	CASTING ELEVATION	INVERT	DEPTH
S-1	4.0'DIA.	R-1642C	921.20	910.00	11.20
S-2	"	"	931.30	919.00	12.30
S-3	"	"	936.30	925.00	11.30
S-4	"	"	939.00	927.00	12.00
R-1	12" END SECTION	"	"	917.90	"
R-2	4.0'DIA.	R-3034A	921.20	918.48	2.42
R-3	2.0'DIA.	"	921.90	918.62	3.30
R-4	12" END SECTION	"	"	917.50	"
R-5	"	"	"	917.40	"

**ENGINEERING DEPARTMENT - CITY OF ANN ARBOR**

**COUNTRY PLACE**  
 AS-BUILT

SCALE  
 HOR 1"=40'  
 VERT 1"=4'  
 DRAWING NO.  
**87076 - R, S, W**  
 SHEET NO. OF

BENCH MARK	SURVEY BOOK	REV. NO.	DESCRIPTION	DATE	DR. BY	CH. BY
			AS-BUILT	5-16-89	CP	
			PER CITY OF ANN ARBOR	5-19-87	SJB	WCC
			ORIGINAL ISSUE	4-87	SJB	RJW

**811**  
 Know what's below. Call before you dig.

**CITY OF ANN ARBOR**  
 PUBLIC SERVICES  
 301 EAST HURON STREET  
 P.O. BOX 86102/8687  
 ANN ARBOR, MI 48103  
 www.aajgo.org

**PROJECT MANAGEMENT - PUBLIC SERVICES - CITY OF ANN ARBOR**  
 2014 SEWER LINING PROJECT  
 AUDUBON DRIVE CROSS LOTS  
 SANITARY SEWER

SCALE: 1"=40'  
 DRAWING NO. 87076 - R, S, W  
 SHEET NO. 13 OF 51

REV.	DESCRIPTION	DATE	DRAWN	CHECKED



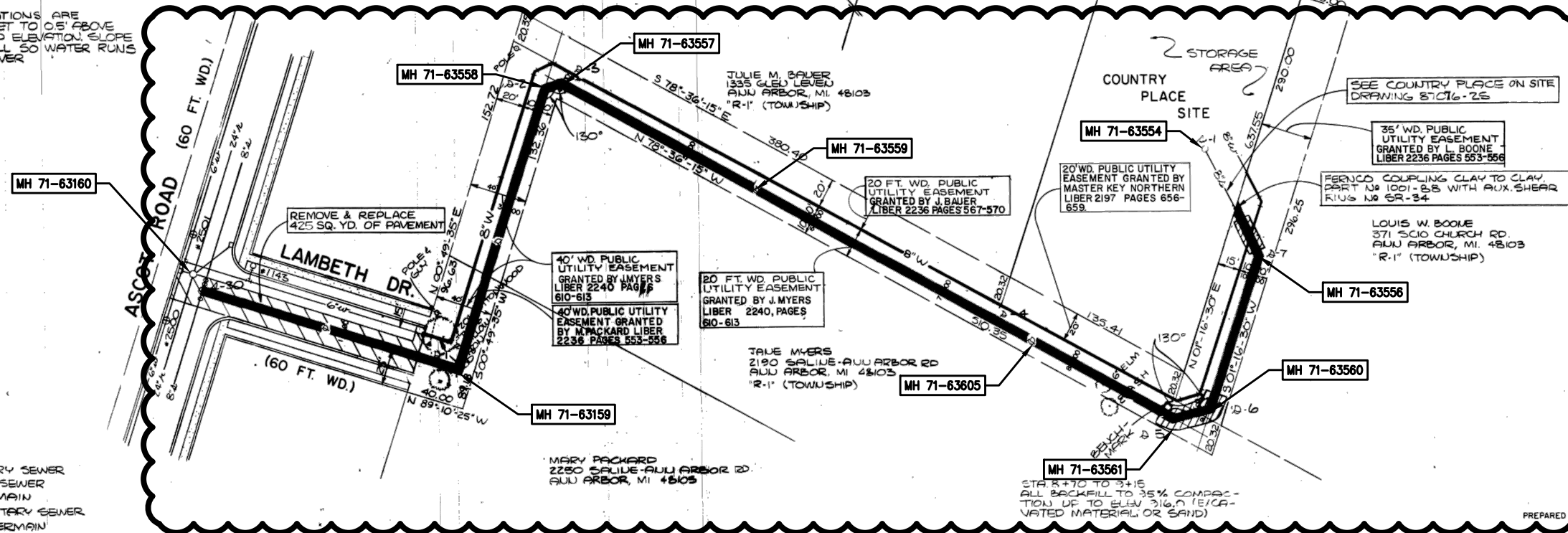
**STRUCTURE SCHEDULE**

STRUCTURE	TYPE	CASTING	CASTING ELEVATION	INVERT	DEPTH
A-50	EXISTING		913.44 ±	905.85	9.59
S-1	4.0' DIA.	SEE SPEC PAGE 50-1	909.70 ±	904.74	4.96
S-2	"	"	915.10 ±	905.75	9.35
S-3	"	"	915.10 ±	905.99	9.11
S-4	"	"	915.50 ±	907.55	7.95
S-5	"	"	919.70 ±	908.53	11.17
S-6	"	"	919.90 ±	908.53	11.37
S-7	"	"	922.10 ±	909.49	12.61

**CONSTRUCTION NOTES**

- 1.) WHERE REMOVAL OF EXISTING CURB AND GUTTER, SIDEWALK OR PAVEMENT IS REQUIRED, THE CONTRACTOR SHALL SANICUT OR REMOVE TO THE NEAREST JOINT. CURB AND GUTTERS SHOWN AS EXISTING AND NOT TO BE REMOVED UNDER THIS CONTRACT, WHICH IS DAMAGED OR DISPLACED BY THE CONTRACTOR, SHALL BE REMOVED AND REPLACED BY THE CONTRACTOR AT HIS EXPENSE.
- 2.) CONTRACTOR SHALL ADJUST TO GRADE ALL VALVE BOXES AND MANHOLES ENCOUNTERED WITHIN THE EXISTING ROADWAY.
- 3.) TREE REMOVAL IS INCLUDED IN GENERAL CONDITIONS.
- 4.) TWO (2) WORKING DAYS PRIOR TO ANY EXCAVATION, CONTRACTOR MUST CONTACT MISS DIG FOR LOCATION OF EXISTING UTILITIES.

CASTING ELEVATIONS ARE APPROXIMATE. SET TO 0.5' ABOVE EXISTING GROUND ELEVATION. SLOPE SURROUNDING FILL SO WATER RUNS AWAY FROM COVER



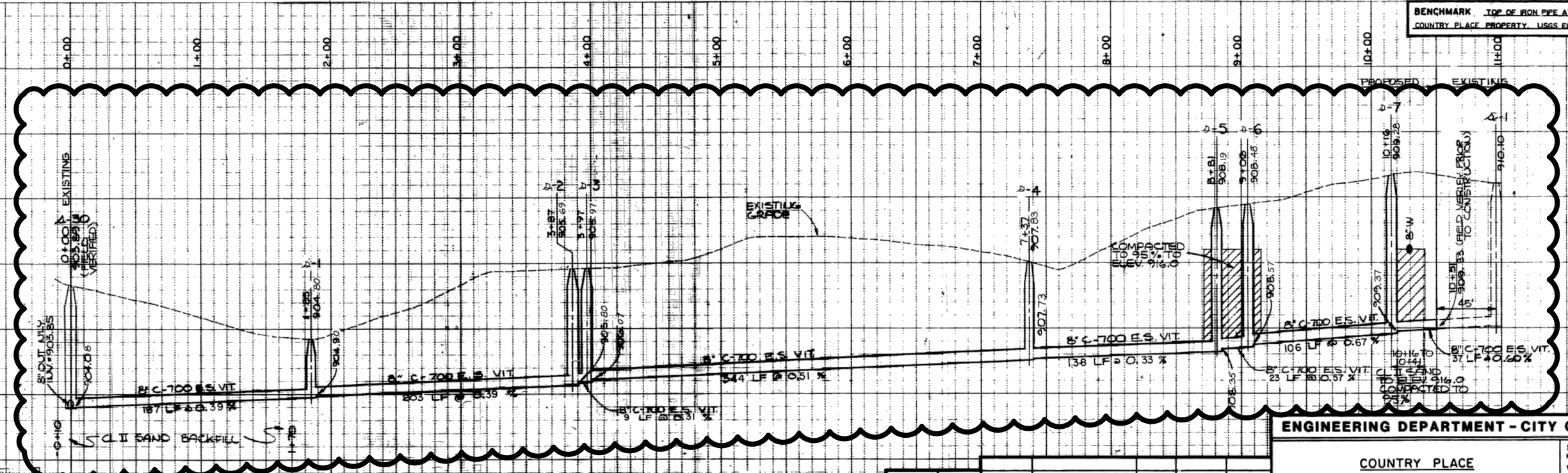
**LEGEND**

- A- EXISTING SANITARY SEWER
- S- EXISTING STORM SEWER
- W- EXISTING WATERMAIN
- S- PROPOSED SANITARY SEWER
- W- PROPOSED WATERMAIN

**AS-BUILT SEWER DRAWING**  
 CORRECTED 4-4-89  
 MICH. DEPT. OF NAT. RESOURCES No. 877050  
 CONSTRUCTION COMPLETED 8-22-88  
 PRESSURE TEST COMPLETED 8-30-88  
 TV. TEST COMPLETED 7-7-88

PREPARED  
 W. F. LEWIS PE, MICH. No. 14336

BENCHMARK TOP OF IRON PIPE AT SOUTHEAST CORNER OF COUNTRY PLACE PROPERTY. USGS ELEV. = 919.70



**ENGINEERING DEPARTMENT - CITY OF ANN ARBOR**

**COUNTRY PLACE  
 SANITARY SEWER  
 PLAN AND PROFILE**

SCALE: HOR: 1" = 40'  
 VERT: 1" = 4'

DRAWING NO. 87016 - S  
 SHEET NO. 1 OF 2

WASHTENAW ENGINEERING CO., INC.

BENCH MARK	SURVEY BOOK	REV. NO.	DESCRIPTION	DATE	DR. BY	CH. BY
"AS-BUILT"		4-8-89	JWC	ZK		
ORIGINAL ISSUE		10-87	SJB, DJS	WCC		

S:\Project Management\Design\201301914 Sewer Lining Project\Plan Production\Primary\201301914.dwg Created: 5-Feb-14 - 10:02 standard bw.stb - Plot Date: 29-Apr-14

**811**  
 Know what's below. Call before you dig.

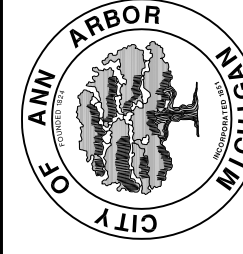
**CITY OF ANN ARBOR**  
 PUBLIC SERVICE  
 301 EAST HURON STREET  
 P.O. BOX 86102/5847  
 ANN ARBOR, MI 48108-0110  
 www.a2gov.org

**ANN ARBOR**

PROJECT MANAGEMENT - PUBLIC SERVICES - CITY OF ANN ARBOR  
 2014 SEWER LINING PROJECT  
 AUDUBON DRIVE CROSS LOTS  
 SANITARY SEWER

SCALE: NTS  
 DRAWING NO. 2013019-14  
 SHEET NO. 14 OF 51



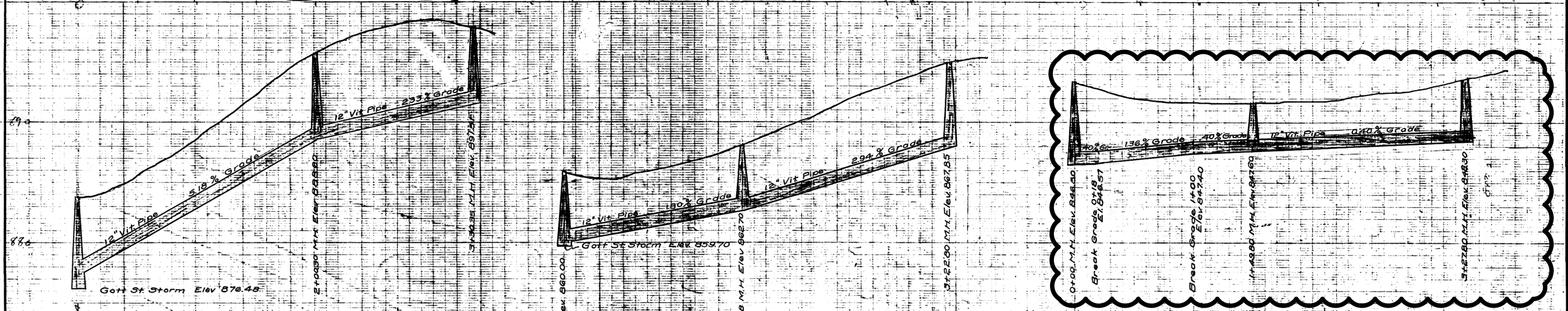
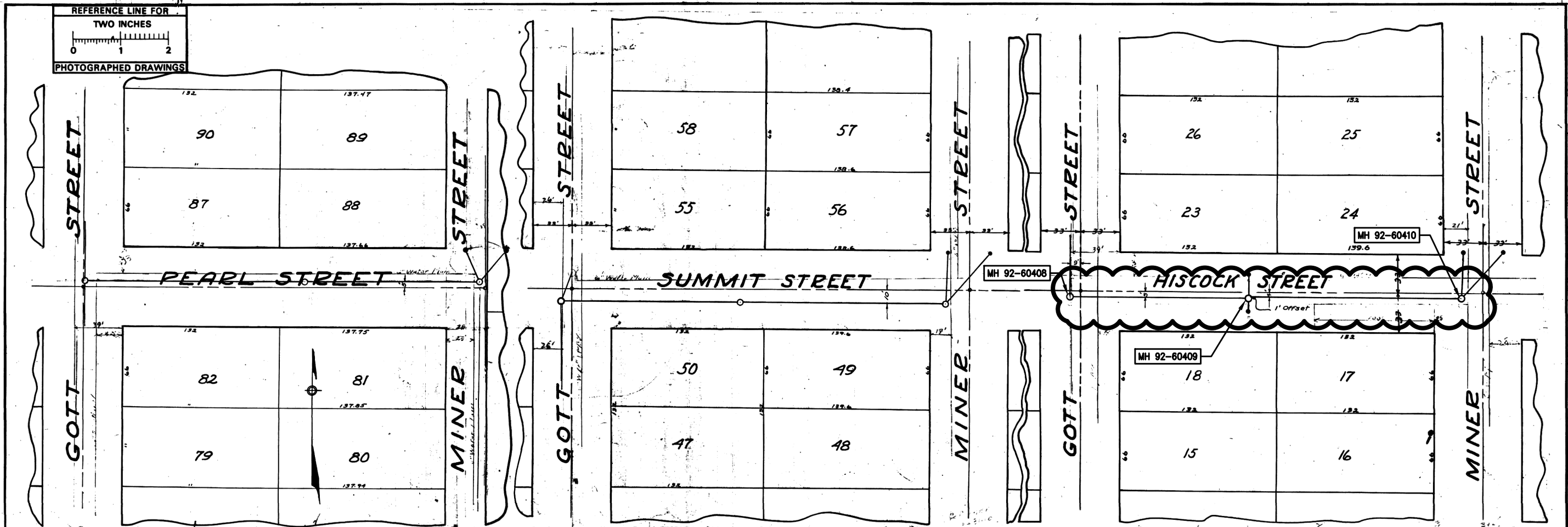
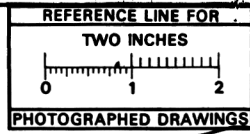


REV.	DESCRIPTION	DATE	DRAWN	CHECKED





S:\Project Management\Design\2013019 2014 Sewer Lining Project\Plan Production\Primary\2013019S1.dwg Dwg Created: 5-Feb-14 - \_o2 standard bw.stb - Plot Date: 29-Apr-14



Digital Status  
Scanned On: 2-23-05  
By: DSK  
Despatched: Yes  
Vector  
D.C.R.

SHEET No	CITY ENGINEER'S OFFICE
INDEX No 1570	<b>ANN ABBOB-MICH.</b>
SHELF No 6	PLAN AND PROFILE
SIZE C	STORM SEWER
SUB. No 637	<b>PEARL - SUMMIT</b>
Drawn By	GOTT To MINER
Traced By	Geo. H. Sandenburgh, City Engineer
Checked By	1926-3-18.
	Scales Plan 1"=40' Prof. Vert. 1"=40'

811 Know what's below. Call Before you dig.

REV.	DESCRIPTION	DATE	DRAWN	CHECKED

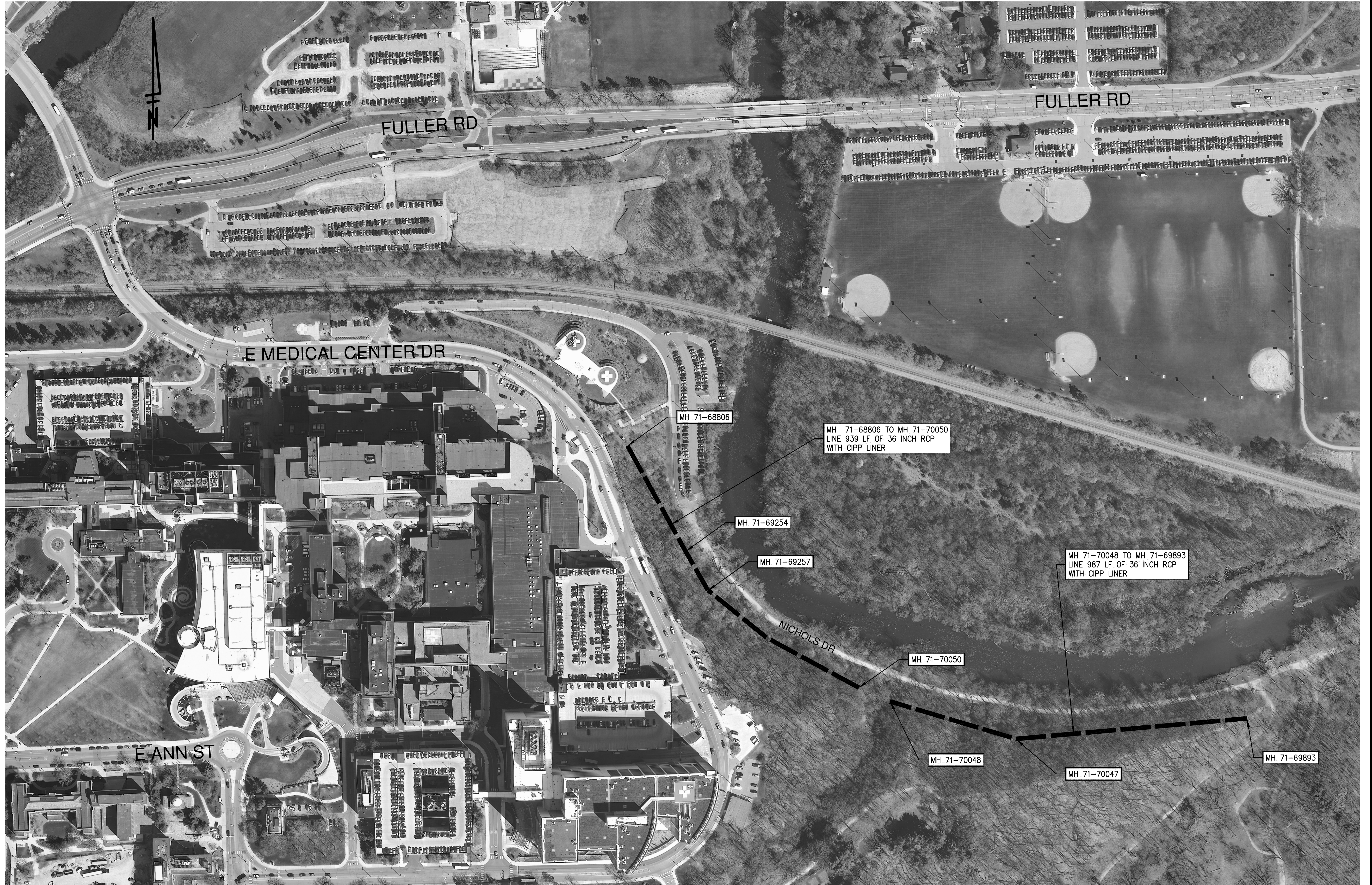
CITY OF ANN ARBOR  
PUBLIC SERVICES  
301 EAST HURON STREET  
ANN ARBOR MI 48106-1547  
www.a2gov.org

CITY OF ANN ARBOR  
PUBLIC SERVICES - CITY OF ANN ARBOR  
2014 SEWER LINING PROJECT  
HISCOCK STREET  
STORM SEWER

SCALE: NTS  
DRAWING No. 2013019-15  
SHEET No. 15 OF 51

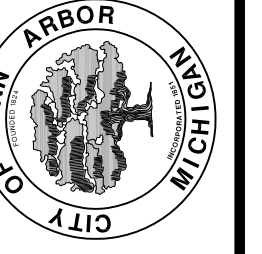


C:\Users\dayman\Documents\Projects\2014 Sewer Lining Project\2013019LP2.dwg Dwg Created: 24-Feb-14 - \_o2 standard bw.stb - Plot Date: 29-Apr-14



REV.	DESCRIPTION	DATE	DRAWN	CHECKED

CITY OF ANN ARBOR  
PUBLIC SERVICE  
301 EAST HURON STREET  
ANN ARBOR MI 48107-0647  
www.a2gov.org



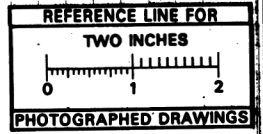
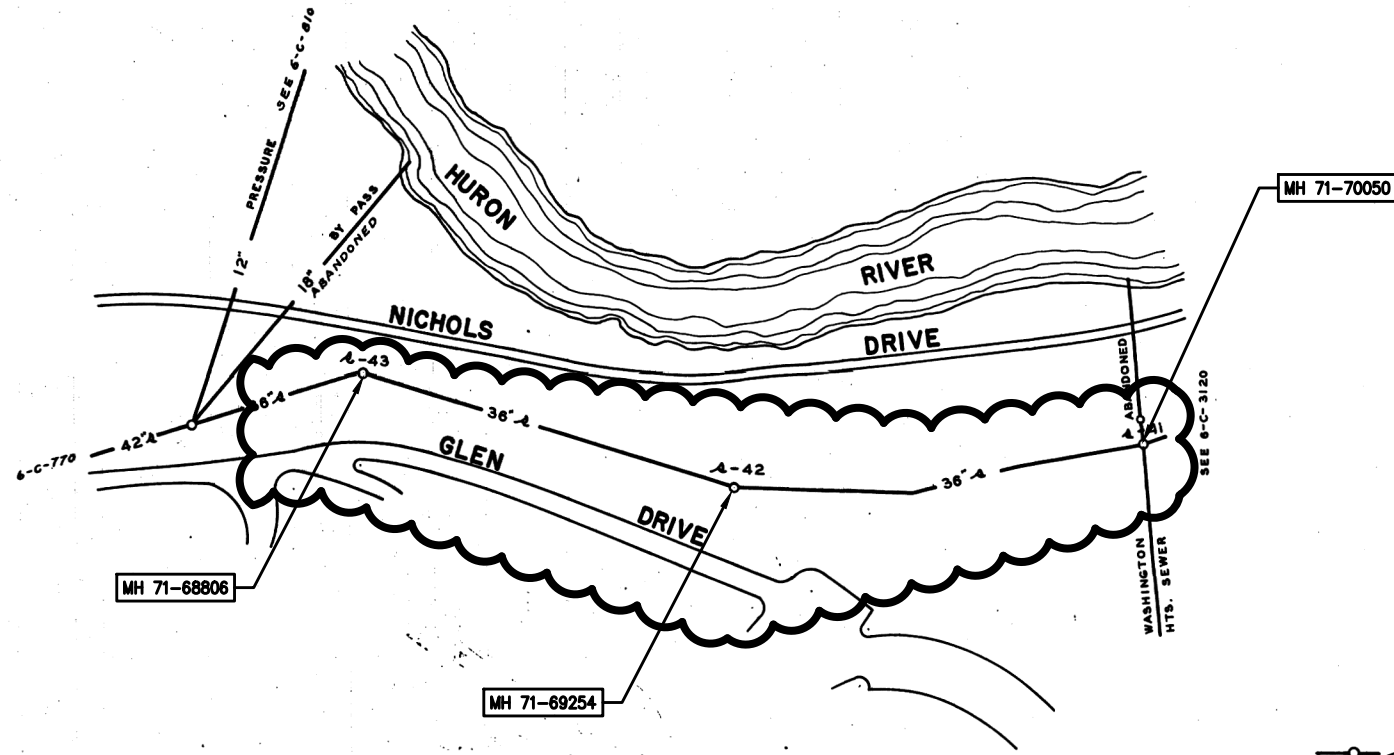
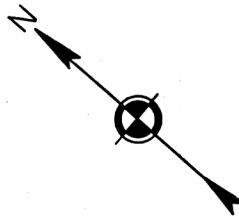
PROJECT MANAGEMENT - PUBLIC SERVICES - CITY OF ANN ARBOR  
2014 SEWER LINING PROJECT  
SOUTHSIDE INTERCEPTOR  
SANITARY SEWER

SCALE: NTS  
DRAWING No.  
2013019-16A



S:\Project Management\Design\2013019 2014 Sewer Lining Project\Plan Production\Primary\201301952.dwg Dwg Created: 5-Feb-14 - \_o2 standard bw.stb - Plot Date: 29-Apr-14

Digital Status  
Scanned On: 10/14/15  
By: LJS

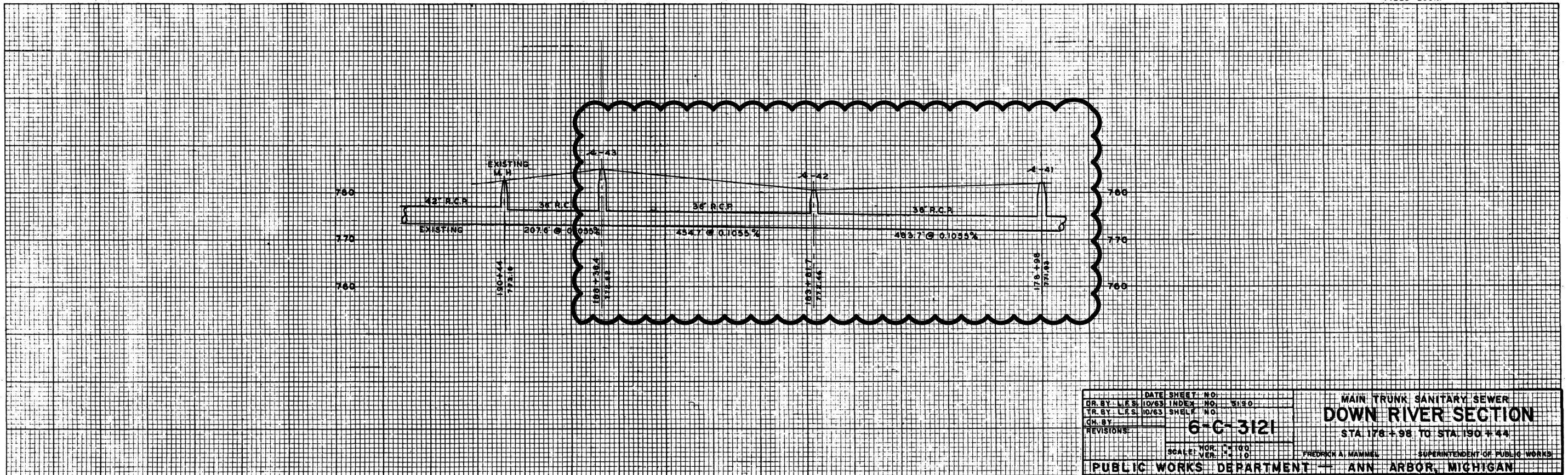


**LEGEND**

○	—	○	EXISTING SANITARY SEWER
●	—	○	PROPOSED " "
○	—	○	EXISTING STORM SEWER
●	—	○	PROPOSED " "
—	—	—	WATER
—	—	—	GAS

**REFERENCES**

BENCH MARK:  
DRAWINGS:  
PROFILES:  
FIELD BOOK:



DATE SHEET NO:	6-C-3121	MAIN TRUNK SANITARY SEWER
DR. BY: L.F.S. 10/63 INDEX NO. 5150		<b>DOWN RIVER SECTION</b>
TR. BY: L.F.S. 10/63 SHEET NO.		STA 178+98 TO STA 190+44
CH. BY:		
REVISIONS:		
SCALE: HOR. 1"=100'		FREDRICK A. MAMMEL SUPERINTENDENT OF PUBLIC WORKS
VER. 1"=10'		
PUBLIC WORKS DEPARTMENT - ANN ARBOR, MICHIGAN		



CITY OF ANN ARBOR  
PUBLIC SERVICE  
301 EAST HURON STREET  
ANN ARBOR, MI 48107-2647  
www.a2gov.org



PROJECT MANAGEMENT - PUBLIC SERVICES - CITY OF ANN ARBOR  
2014 SEWER LINING PROJECT  
SOUTHSIDE INTERCEPTOR  
SANITARY SEWER



S:\Project Management\Design\2013019 2014 Sewer Lining Project\Plan Production\Primary\201301952.dwg Dwg Created: 5-Feb-14 - 02 standard bw.stb - Plot Date: 29-Apr-14



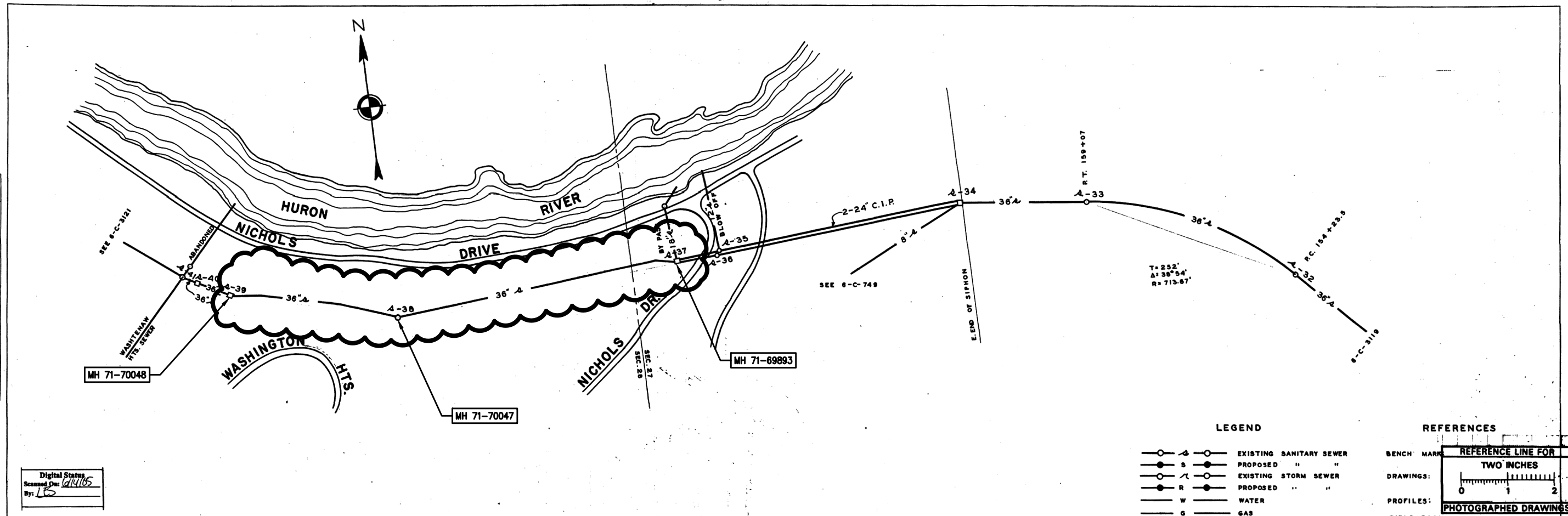
REV.	DESCRIPTION	DATE	DRAWN	CHECKED

CITY OF ANN ARBOR  
PUBLIC SERVICE  
301 EAST HURON STREET  
ANN ARBOR MI 48106-1547  
www.a2gov.org



PROJECT MANAGEMENT - PUBLIC SERVICES - CITY OF ANN ARBOR  
2014 SEWER LINING PROJECT  
SOUTHSIDE INTERCEPTOR  
SANITARY SEWER

SCALE: HORIZ. 1"=100'  
VERTICAL 1"=10'  
DRAWING No. 2013019-17  
SHEET No.



**LEGEND**

	EXISTING SANITARY SEWER
	PROPOSED " "
	EXISTING STORM SEWER
	PROPOSED " "
	WATER
	GAS

**REFERENCES**

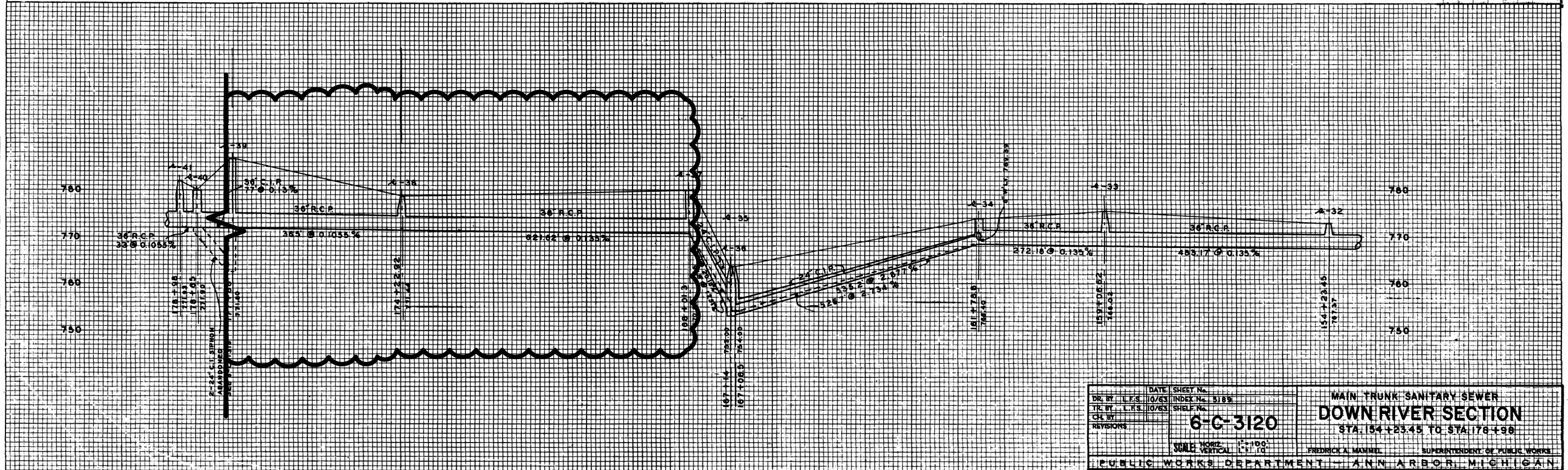
BENCH MARK:

DRAWINGS:

PROFILES:

FIELD BOOK:

Digital Status  
Scanned On: 6/14/15  
By: LBS



DATE: 10/6/13	SHEET No. 5189	<b>MAIN TRUNK SANITARY SEWER DOWN RIVER SECTION</b> STA. 154+23.45 TO STA. 178+98
DR. BY: L.F.S.	INDEX No.	
TR. BY: L.F.S.	SHELF No.	SCALE: HORIZ. 1"=100' VERTICAL 1"=10' FREDRICK A. MAHNEE SUPERINTENDENT OF PUBLIC WORKS
CHEK BY:		
<b>6-C-3120</b>		PUBLIC WORKS DEPARTMENT - ANN ARBOR MICHIGAN
REVISIONS:		

PLATE & CROSS SECTION, U. P. F. & R. E. STANDARD

Printed in U.S.A.





**PROJECT MANAGEMENT - PUBLIC SERVICES - CITY OF ANN ARBOR**  
 2014 SEWER LINING PROJECT  
 NORTH UNIVERSITY AVENUE  
 STORM SEWER

**811**  
 Know what's below.  
 Call before you dig.

REV.	DATE	DRAWN	CHECKED	DESCRIPTION

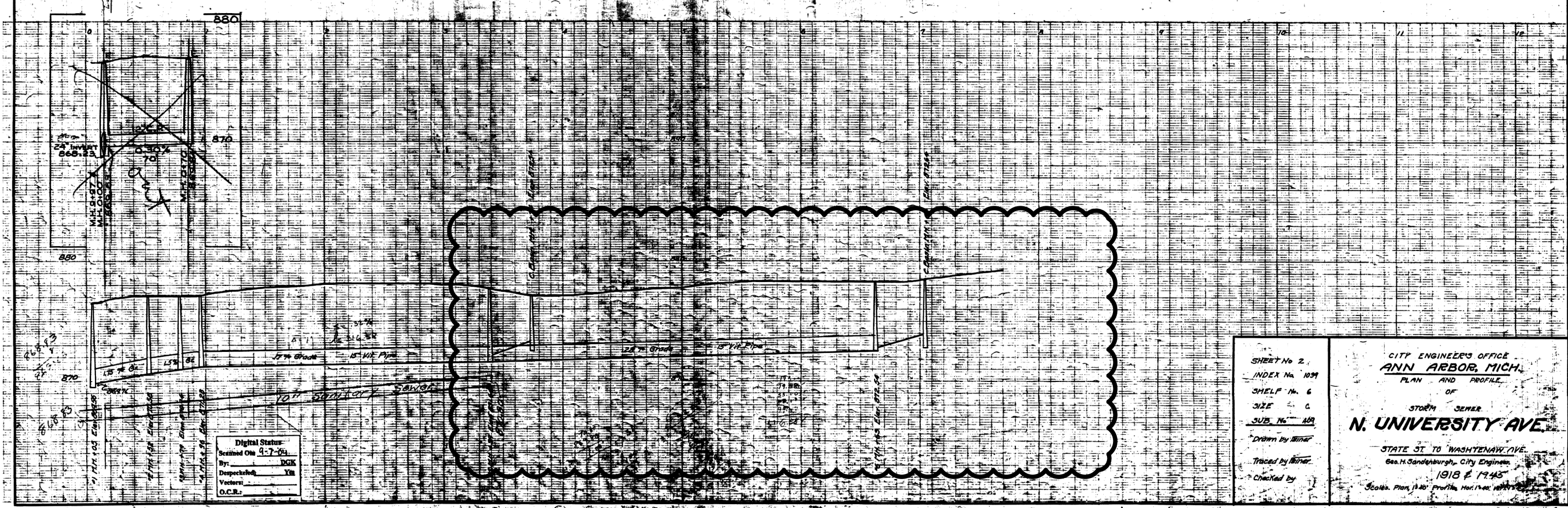
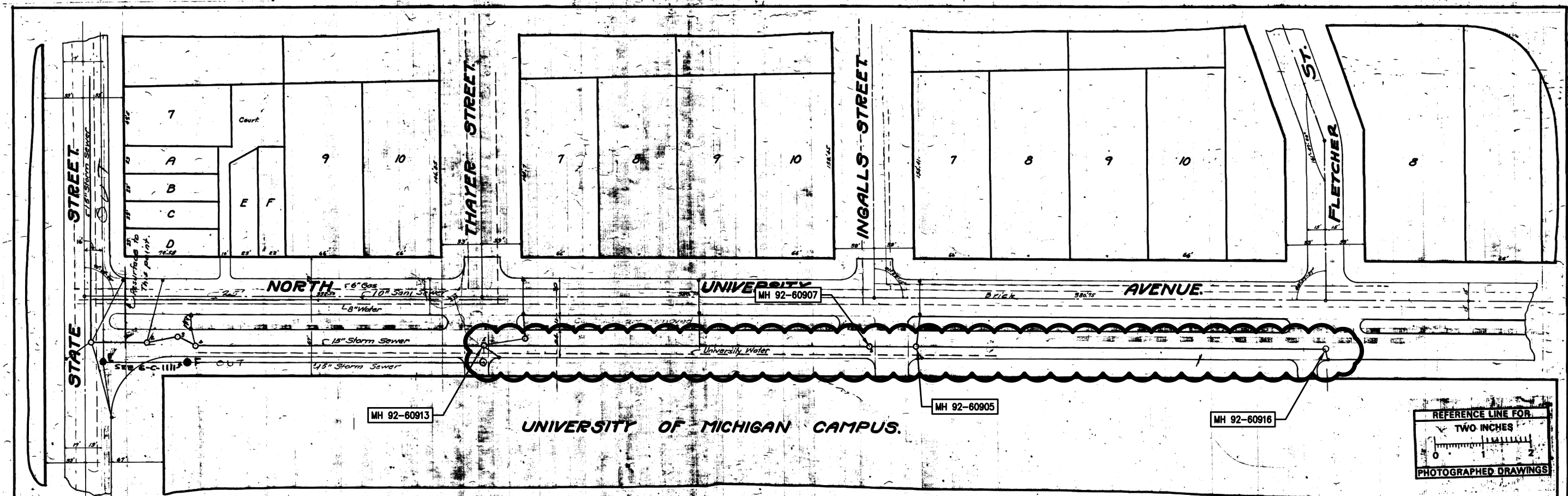
**CITY OF ANN ARBOR**  
 PUBLIC SERVICE  
 301 EAST HURON STREET  
 ANN ARBOR, MI 48106-1647  
 www.a2gov.org

SHEET No. 18A OF 51

SCALE: NTS  
 DRAWING No. 2013019-18A



S:\Project Management\Design\2013019 2014 Sewer Lining Project\Plan Production\Primary\201301952.dwg Dwg Created: 5-Feb-14 - \_o2 standard bw.stb - Plot Date: 29-Apr-14



Digital Status:  
Scanned On 4-7-04  
By: DCK  
Despatched: YN  
Vector: YN  
O.C.R.

SHEET No. 2  
INDEX No. 1099  
SHELF No. 6  
SIZE C  
SUB. No. 109

CITY ENGINEER'S OFFICE  
**ANN ARBOR, MICH.**  
PLAN AND PROFILE  
OF  
STORM SEWER  
**N. UNIVERSITY AVE.**  
STATE ST. TO WASHTENAW AVE.  
Geo. H. Sandenburgh, City Engineer  
1918 & 1945  
Scale: Plan 1"=20' Profile 1"=4'

Drawn by: Binar  
Traced by: Binar  
Checked by:

**811**  
Know what's below.  
Call Before you dig.

REV.	DESCRIPTION	DATE	DRAWN	CHECKED

CITY OF ANN ARBOR  
PUBLIC SERVICE  
301 EAST HURON STREET  
ANN ARBOR, MI 48107-2667  
www.a2gov.org

**ANN ARBOR MICHIGAN**

PROJECT MANAGEMENT - PUBLIC SERVICES - CITY OF ANN ARBOR  
2014 SEWER LINING PROJECT  
NORTH UNIVERSITY AVENUE  
STORM SEWER

SCALE: 1"=20'  
DRAWING No. 2013019-18  
SHEET No. 18 OF 51











