

3000 Affluent ...

22

HILLWOOD SUBDIVISION NUMBER ONE

A PART OF THE SOUTHWEST ONE QUARTER
SECTION TWENTY SEVEN, ANN ARBOR TOWNSHIP
WASHTENAW COUNTY, MICHIGAN

CERTIFICATE OF APPROVAL BY BOARD OF COUNTY AUDITORS

Approved by the Board of County Auditors of
Washtenaw County, Michigan, this 21st day of
November, 1945

J. Martin Rempp, Chairman
John E. Helt

COUNTY TREASURER'S CERTIFICATE RELATING TO TAXES

(Sec. 135, Act 206, 1893, as amended Sec. 4134, C.L. 1915)
Office of County Treasurer, Washtenaw County.
I hereby certify that there are N tax liens or
titles held by the State on the lands described
herein, and that there are no tax liens or titles
held by individuals on said lands, for the five years
preceding the 21st day of November, 1945,
and that the taxes for said period of five years are
paid, as shown by the records at this
office.

This certificate does not apply to taxes, if any, now
in process of collection by township, city or village
collecting officers.

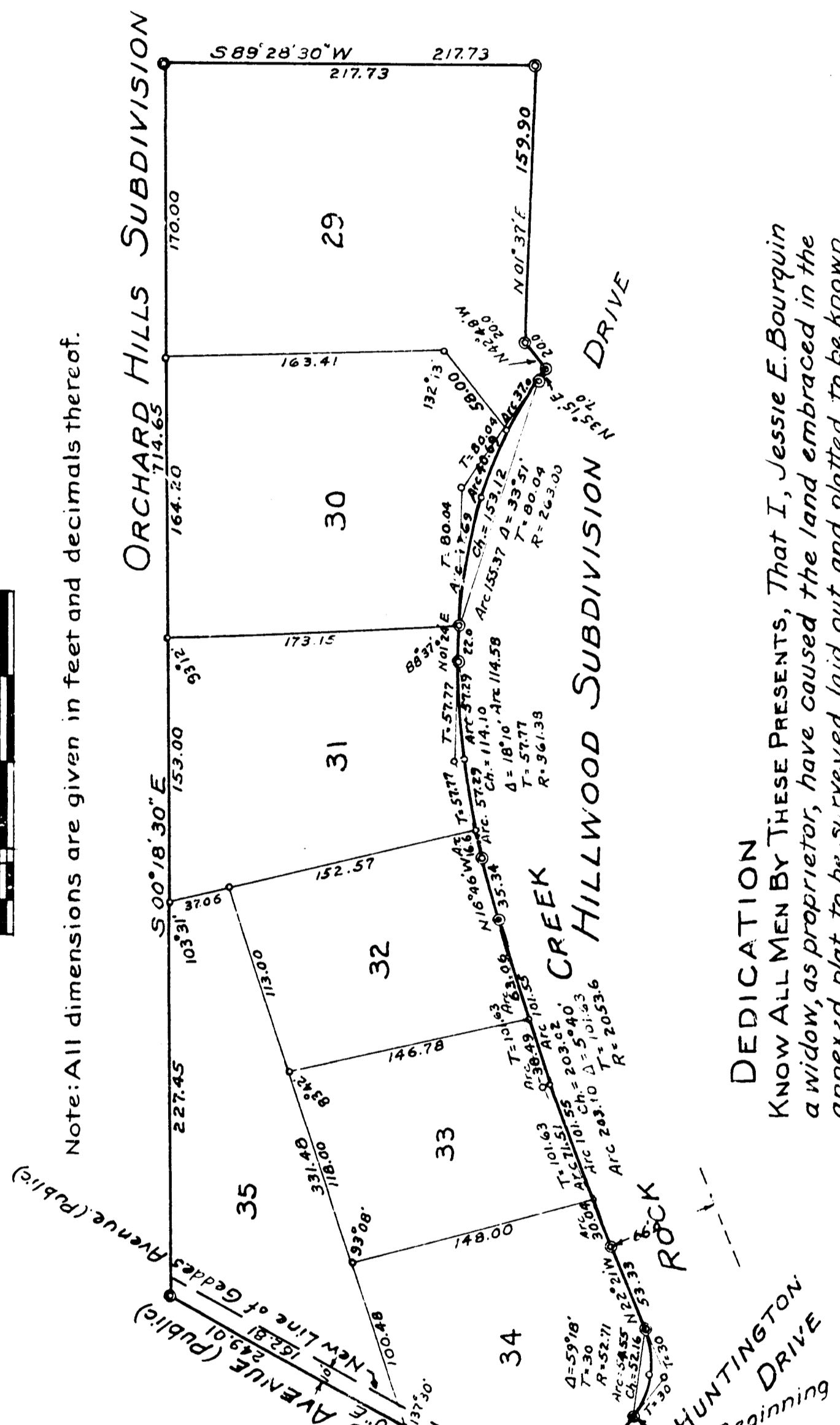
Clyde D. Fleming
County Treasurer

RECORDED
December 5, 1945
44720
HILLWOOD SUBDIVISION

CERTIFICATE OF APPROVAL BY CITY PLANNING COMMISSION

Approved by the City Planning Commission
of Ann Arbor, Washtenaw County, Michigan
at a meeting held the 14th day of November, 1945

Edward M. Couper, Chairman
Samuel J. Porter, Secretary



Note: All dimensions are given in feet and decimals thereof.

DEDICATION

KNOW ALL MEN BY THESE PRESENTS, That I, Jessie E. Bourquin
a widow, as proprietor, have caused the land embraced in the
annexed plat to be surveyed, laid out and platted, to be known
as "HILLWOOD SUBDIVISION NUMBER ONE", part of the
southwest one quarter section twenty seven, Ann Arbor
Township, Washtenaw County, Michigan, and that the streets
and alleys as shown on said plat are hereby dedicated to the use
of the lot owners only except Geddes Avenue (Public).

SIGNED AND SEALED IN PRESENCE OF

Jessie E. Bourquin (L.S.)
STATE OF MICHIGAN)
COUNTY OF WASHTENAW) ss
Clyde D. Fleming

DESCRIPTION OF LAND PLATTED

The land embraced in the annexed plat of "HILLWOOD SUBDIVISION
NUMBER ONE, a part of the southwest one quarter, section twenty
seven, Ann Arbor Township, Washtenaw County, Michigan, is described
as follows: Commencing at the south quarter post of section 27 Town
2 South, Range 6 East, Meridian of Michigan; thence, north 79° 25' 30"
west along the center line of Geddes Road 533.13 feet; thence north
36° 51' 00" east 36.83 feet to a monument in the northerly line of Geddes
Road; thence, north 79° 25' 30" west 73.68 feet along the northerly line
of Geddes Road to a monument for the Place of Beginning; thence
north 36° 51' east 64.44 feet to a point of curve of a circular
curve to the left of radius 52.71 feet; thence, northerly in the arc of
said curve 54.55 feet to a point of tangency; thence, north 22° 21' 00"
west along the tangent to the last curve 53.33 feet to a point of
curve of a circular curve to the right of radius 203.36 feet; thence,
north westerly in the arc of said curve 203.10 feet; thence, north
16° 46' west 35.34 feet to a point of curve of a circular curve to the
right of radius 361.38 feet; thence, northerly in the arc of said curve
114.58 feet to a point of tangency; thence, north 01° 24' east 22.0 feet to
a point of curve of a circular curve to the right of radius 263.0 feet;
thence, north easterly in the arc or said curve 155.37 feet to a point
of tangency; thence, north 35° 15' east 70 feet; thence, north 42° 48' west
20.0 feet; thence, north 01° 37' east 53.90 feet; thence, south 89° 20' 30"
217.73 feet; thence, south 00° 18' 30" east 114.65 feet; thence, south 61° 41' 30"
east 249.01 feet; thence, south 79° 25' 30" east 126.63 feet to the Place of
Beginning except the southerly 10 feet parallel to Geddes Avenue to be
used for widening Geddes Avenue (Public)

CERTIFICATE OF MUNICIPAL APPROVAL

This plat was approved by the Township Board of
the Township of Ann Arbor at a meeting held

the 14th day of November, 1945

Ray E. Worcester, Clerk

CERTIFICATE OF APPROVAL BY BOARD OF COUNTY ROAD COMMISSIONERS

This plat has been examined and approved on the
21st day of November, 1945
by the Washtenaw County Board of Road Commissioners:

Geo. Gill, Chairman
James C. Henolley, Member

SURVEYOR'S CERTIFICATE

I hereby certify that the plat hereon delineated is a correct
one and that permanent metal monuments consisting of bars not
less than one half inch in diameter and 48 inches in length, encased in
a concrete cylinder at least 4 inches in diameter and 48 inches
in depth have been placed at points marked thus @ as thereon
shown at all angles in the boundaries of the land platted, at all
the intersections of streets, intersections of streets and alleys
with the boundaries of the plat as shown on said plat.

Geo. M. Bleekman, Registered Land Surveyor