

EDM
6-24-47

"TWIN OAKS SUBDIVISION NO. 1. OF SUNSET HEIGHTS"

A PART OF THE NORTH HALF OF THE SOUTHWEST QUARTER OF SECTION 20, T.2S., R.6E., IN THE CITY OF ANN ARBOR, WASHTENAW COUNTY, MICHIGAN, BEING A PART OF LOTS 2, 3 AND 4 OF HISCOCK'S IMPROVED PLAT OR ALTERATION TO THE PLAT OF HISCOCK'S ADDITION TO THE CITY OF ANN ARBOR, AS THE SAME APPEARS IN LIBER 46 OF DEEDS ON PAGE 68, A PART OF LOT 21 OF SPRING HILL ADDITION TO THE CITY OF ANN ARBOR, AS THE SAME APPEARS IN LIBER ONE OF PLATS ON PAGE 21, AND A PART OF LOT 128 OF JAMES B. GOTT'S SECOND ADDITION TO THE CITY OF ANN ARBOR, AS THE SAME APPEARS IN LIBER 67 OF DEEDS ON PAGE 61 IN THE REGISTER OF DEEDS OFFICE, WASHTENAW COUNTY, MICHIGAN.

SURVEYOR'S CERTIFICATE

I hereby certify that the plat hereon delineated is a correct one and that permanent metal monuments consisting of bars not less than one-half inch in diameter and 48 inches in length, or shorter bars of not less than one-half inch in diameter lapped over each other at least 6 inches with an over-all length of not less than 48 inches, encased in a concrete cylinder at least 4 inches in diameter and 48 inches in depth have been placed at points marked thus © as thereon shown at all angles in the boundaries of the land platted, at all intersections of streets, intersections of alleys, or of streets and alleys, and at the intersections of streets and alleys with the boundaries of the plat as shown on said plat.

Harry H. Atwell
Harry H. Atwell
Registered Engineer and Surveyor.

Examined and Approved
Mayme Jewell Purdy
Mayme Jewell Purdy, Deputy Auditor General

SCALE 1 INCH = FIFTY FEET

FILED IN AUDITOR GENERAL'S DEPT.
Mayme Jewell Purdy
Mayme Jewell Purdy, DEPUTY AUDITOR GENERAL

Note: All dimensions are shown in feet and decimals thereof.

Register's Office
Washtenaw County, ss.
Plat of "Twin Oaks Subdivision No. 1 of Sunset Heights" City of Ann Arbor was Recorded this 25th day of June A.D., 1947 at 2:40 o'clock P. M. in Liber 10 of Plate 40 on Page 40
Allen O. Seymour
Allen O. Seymour
Register of Deeds
ORIGINAL ON FILE

I HEREBY CERTIFY THAT THIS COPY IS A TRUE COPY OF THE MAP OR PLAT FORWARDED THE REGISTER OF DEEDS FOR RECORDING.

COMPARED
Mayme Jewell Purdy
Mayme Jewell Purdy, DEPUTY AUDITOR GENERAL

DESCRIPTION.

The land embraced in the annexed plat of "TWIN OAKS SUBDIVISION NO. 1 OF SUNSET HEIGHTS" is located in the north half of the southwest quarter of section 20, T.2S., R.6E., in the city of Ann Arbor, Washtenaw County, Michigan, being a part of Lots 2, 3 and 4 of Hiscock's Improved Plat or Alteration to the Plat of Hiscock's Addition to the City of Ann Arbor, as the same appears in Liber 46 of Deeds on page 68, a part of Lot 21 of Spring Hill Addition to the City of Ann Arbor, as the same appears in Liber one of Plats on page 21, and a part of Lot 128 of James B. Gott's Second Addition to the City of Ann Arbor, as the same appears in Liber 67 of Deeds on page 61 in the office of Register of Deeds, Washtenaw County, Michigan is described as follows: Commencing at the west quarter post of Section 20, T.2S., R.6 E., in the City of Ann Arbor, Washtenaw County, Michigan; thence east along the east and west quarter line of said section 186.96 feet; thence southerly along a line making a south west angle of 89°-39' with the east and west quarter line 25.0 feet to a concrete monument in the south line of Twin Oaks Subdivision of Sunset Heights as it appears in Liber 8 of Plats on page 44 FOR A PLACE OF BEGINNING; thence S 88°-33' & along the south line of Twin Oaks Subdivision of Sunset Heights 517.30 feet; thence S 13°-29' 30" W 72.47 feet; thence S 04°-26' 30" & 376.60 feet; thence N 88°-33' W 398.15 feet; thence N 01°-12' & 79.84 feet; thence N 88°-48' W 33.0 feet; thence northerly 49.87 feet in the arc of a circular curve convex to the east of radius 133.85 feet to a point of tangency, the chord subtended by the above arc is 49.58 feet in length and has a bearing of N 09°-28' 30" W; thence N 20°-09' W 340.9 feet to the south line of Twin Oaks Subdivision of Sunset Heights; thence S 89°-15' E along the south line of said subdivision 25.65 feet to the place of beginning, being a part of the north half of the south west quarter of section 20, Ann Arbor Township, Washtenaw County, Michigan. This plat includes a part of Lots 2, 3 and 4 of Hiscock's Improved Plat or Alteration to the Plat of Hiscock's Addition to the City of Ann Arbor as the same appears in Liber 46 of Deeds on page 68, a part of Lot 21 of Spring Hill Addition to the City of Ann Arbor, as the same appears in Liber One of Plats on page 21, and a part of Lot 128 of James B. Gott's Second Addition to the City of Ann Arbor as the same appears in Liber 67, of Deeds on page 61 in the office of Register of Deeds of Washtenaw County, Michigan.

CERTIFICATE OF APPROVAL BY THE BOARD OF PUBLIC WORKS.

This plat was approved by the Board of Public Works of the city of Ann Arbor at a meeting held...
Fred C. Parry
Fred C. Parry, Clerk.

CERTIFICATE OF MUNICIPAL APPROVAL.

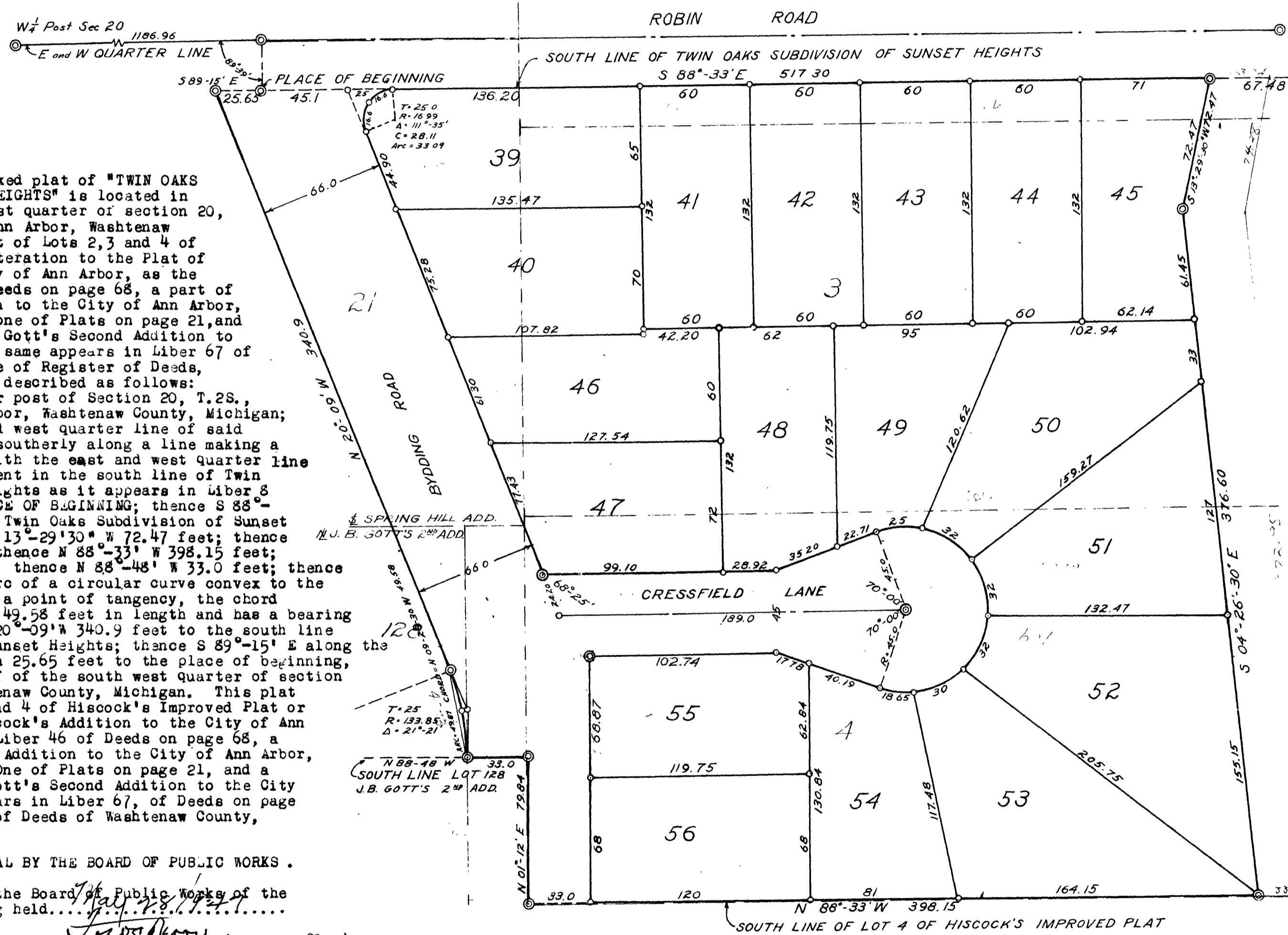
This plat was approved by the Common Council of the City of Ann Arbor at a meeting held...
Fred C. Parry
Fred C. Parry, Clerk.

CERTIFICATE OF APPROVAL BY THE PLANNING COMMISSION.

This plat was approved by the Planning Commission of the city of Ann Arbor at a meeting held...
Samuel D. Porter
Samuel D. Porter, Chairman.
G. Kendrick
G. Kendrick, Secretary.

CERTIFICATE OF APPROVAL BY THE BOARD OF COUNTY AUDITORS.

Approved by the Board of County Auditors of Washtenaw County, Michigan this...
John E. Walz
John E. Walz, Chairman.



DEDICATION

KNOW ALL MEN BY THESE PRESENTS, That we the State Board of Agriculture, a body corporate, created by and existing under the constitution of the State of Michigan, by John A. Hannah, President, and Karl H. Mc Donel, Secretary, as proprietor, have caused the land embraced in the annexed plat to be surveyed, laid out and platted to be known as "TWIN OAKS SUBDIVISION NO. 1 OF SUNSET HEIGHTS" a part of the north half of the southwest quarter of Section 20, T.2S., R.6.E., in the City of Ann Arbor, Washtenaw County, Michigan, being a part of Lots 2, 3 and 4 of Hiscock's Improved Plat or Alteration to the Plat of Hiscock's Addition to the City of Ann Arbor, as the same appears in Liber 46 of Deeds on page 68, a part of Lot 21 of Spring Hill Addition to the City of Ann Arbor, as the same appears in Liber One of Plats on page 21, and a part of Lot 128 of James B. Gott's Second Addition to the City of Ann Arbor, as the same appears in Liber 67 of Deeds on page 61, in the office of Register of Deeds, Washtenaw County, Michigan and that the streets as shown on said plat are hereby dedicated to the use of the public.

The State Board of Agriculture

Signed and sealed in the Presence of
John A. Hannah....., President.
Karl H. Mc Donel....., Secretary,
Earl H. Carls.....
Bruce H. Greene.....

STATE OF MICHIGAN ss.

County of Washtenaw

On this... 20th day of February... A.D. 1947... before me... Notary Public in and for said county appeared John A. Hannah and Karl H. McDonel to me personally known, who being each by me duly sworn did say that they are the President and Secretary respectively of the State Board of Agriculture, a body corporate, created by and existing under the constitution of the State of Michigan, and that the seal affixed to said instrument is the corporate seal of said body corporate and that said instrument was signed and sealed in behalf of said body corporate by authority of its Board of Directors and the said John A. Hannah and Karl H. McDonel acknowledged said instrument to be the free act and deed of said body corporate.

Earl H. Carls
Notary Public, Washtenaw County
My commission expires... 16, 1948.

COUNTY TREASURER'S CERTIFICATE RELATING TO TAXES.
(Sec. 135, act 206, 1893 as amended - Sec. 4134, C.L. 1915.)
Office of County Treasurer, Washtenaw County

I hereby certify, That there are... tax liens or titles held by the state on the lands described hereon, and that there are... tax liens titles held by individuals on said lands, for the five years preceding the... day of... 1947, and the taxes for said period of five years are... paid, as shown by the records of this office.

This certificate does not apply to taxes, if any, now in process of collection by township, city or village collecting officers.
Clive B. Fleming
Clive B. Fleming
County Treasurer.

1 of 1
REGISTERED SURVEYOR NO. 1. OF SUNSET HEIGHTS
PAGE 10
06/25/1947