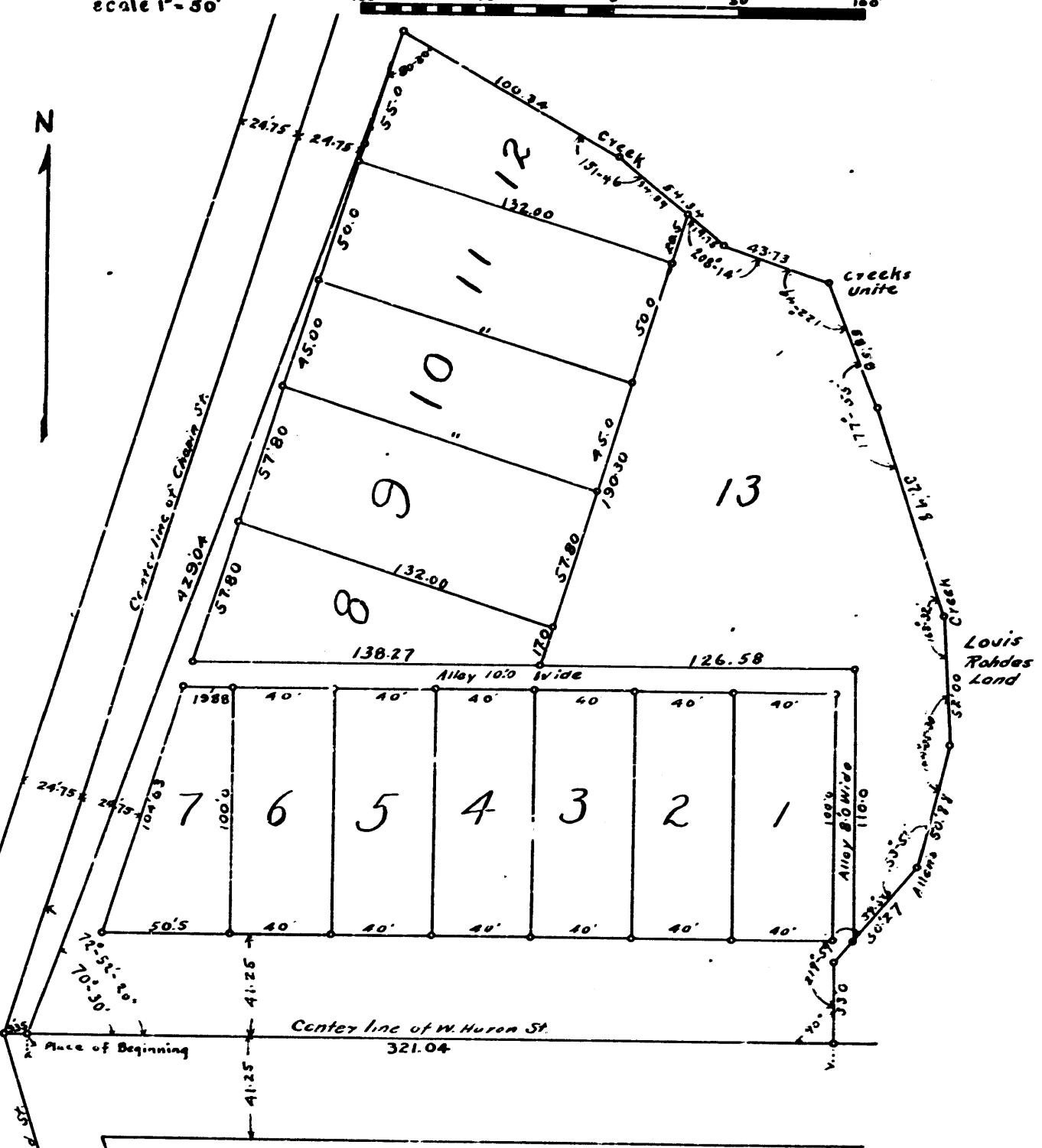


1 OF 1  
11/20/1906  
REGISTER'S SUB-DIVISION  
PAGE 124

# Map of Sibley's Sub-division in the City of Ann Arbor, Washtenaw Co. Mich.

Scale 1" = 50'



**Surveyors Certificate**  
I here by certify that the plat hereon delineated is a correct one, and that permanent monuments, consisting of iron pipes have been planted at points marked thus o as there on shown at all angles in the boundaries of the land platted, and at all intersections of streets or streets and alleys. *Harry H. Atwell* Surveyor.

**Certificate of Approval**  
By the Board of Public Works.  
This plat was approved at a regular meeting of the Board of Public Works, City of Ann Arbor, Washtenaw County, Michigan the 5<sup>th</sup> day of September 1906  
*Ross Granger, Clerk L.S.*

**Tax Certificate**  
County Treasurers Office,  
Washtenaw County, Mich.  
Ann Arbor, Mich. Aug. 23<sup>rd</sup> 1906  
It is hereby certified that the following statement shows the condition of Lands described below in the County of Washtenaw: so far as relates to the State and County taxes prior to the 23<sup>rd</sup> day of August 1906, to-wit: A piece of land part of Sec. 29. A.A. bounded north by Allen's creek, south by Huron St., East by Robde's land and West by Chapin St.  
As appears by the records of this office *Not only state delinquent taxes if any during five years prior to date.*  
*Otto B. Smith L.S.*  
County Treasurer  
e.a.

**Dedication**  
Know all men by these present that we *Fred Sibley* as proprietor, and *Flora Sibley* his wife, have caused the land in the annexed plat to be surveyed, laid out and platted to be known as Sibley's Sub-division and that the streets and Alleys as shown on said plat are hereby dedicated to the use of the public.  
signed and sealed in the presence of  
*Eugene Osterlin, Fred Sibley L.S.*  
*Hattie Schurb, Mrs. Flora Sibley L.S.*

**Acknowledgement**  
State of Michigan }  
County of Washtenaw. }  
On this 7<sup>th</sup> day of September 1906 personally came the above named *Fred Sibley* and *Flora Sibley*, his wife, known to me to be the persons who executed the above dedication and acknowledged the same to be their free act and deed. *Eugene Osterlin,*  
Notary Public  
Washtenaw Co. Mich.  
L.S.  
My Commission expires April 15, 1909.

**Certificate of Approval**  
Examined and Approved Sept. 22, 1906  
*John F. Wilkinson*  
Deputy Auditor General L.S.

**Certificate of Record**  
Registers Office }  
Washtenaw Co. }  
Received for record the 20<sup>th</sup> day of September 1906 at 10<sup>th</sup> o'clock A.M. and recorded in Liber 2 of plats, on page 2.

*William Scrimgeour* Supt. Register  
**Description**  
The land embraced in the annexed plat of Sibley's Sub-division is described as follows - Beginning at a point on the center line of Huron St. W. 935  
Ely from monument at intersection of center lines of Huron, Chapin, and W. Third Streets,  
thence Ely along center line of Huron St. 321.04  
thence Nly at right angles to Huron St. 33.00  
thence NEly at a NEly angle of 39° 53' 50.27  
thence Nly at a Nly angle of 26° 09' 50.88  
thence Nly at a Nly angle of 15° 54' 30" 52.00  
thence Nwly at Nwly angle of 16° 28' 87.98  
thence Nwly at Nwly angle of 2° 05' 58.58  
thence Wly at Wly angle of 57° 11' 43.73.  
thence Nwly at Swly angle of 28° 14' 54.34  
thence Wly at Wly angle of 28° 14' 100.34  
thence Swly at Sely angle of 80° 30' 429.04  
to place of beginning.

**Certificate of Comparison with Original**  
State of Michigan }  
County of Washtenaw }  
We *William Scrimgeour* Supt. Register of Deeds in or for said county, and *Harry H. Atwell* of Ann Arbor Surveyor, hereby certify that we have each carefully compared this copy with the original plat of Sibley's Sub-division and that it is an exact copy thereof and of the whole of such original map or plat.  
*William Scrimgeour* Supt. Register of Deeds  
*Harry H. Atwell* Surveyor

*H.H. Atwell*