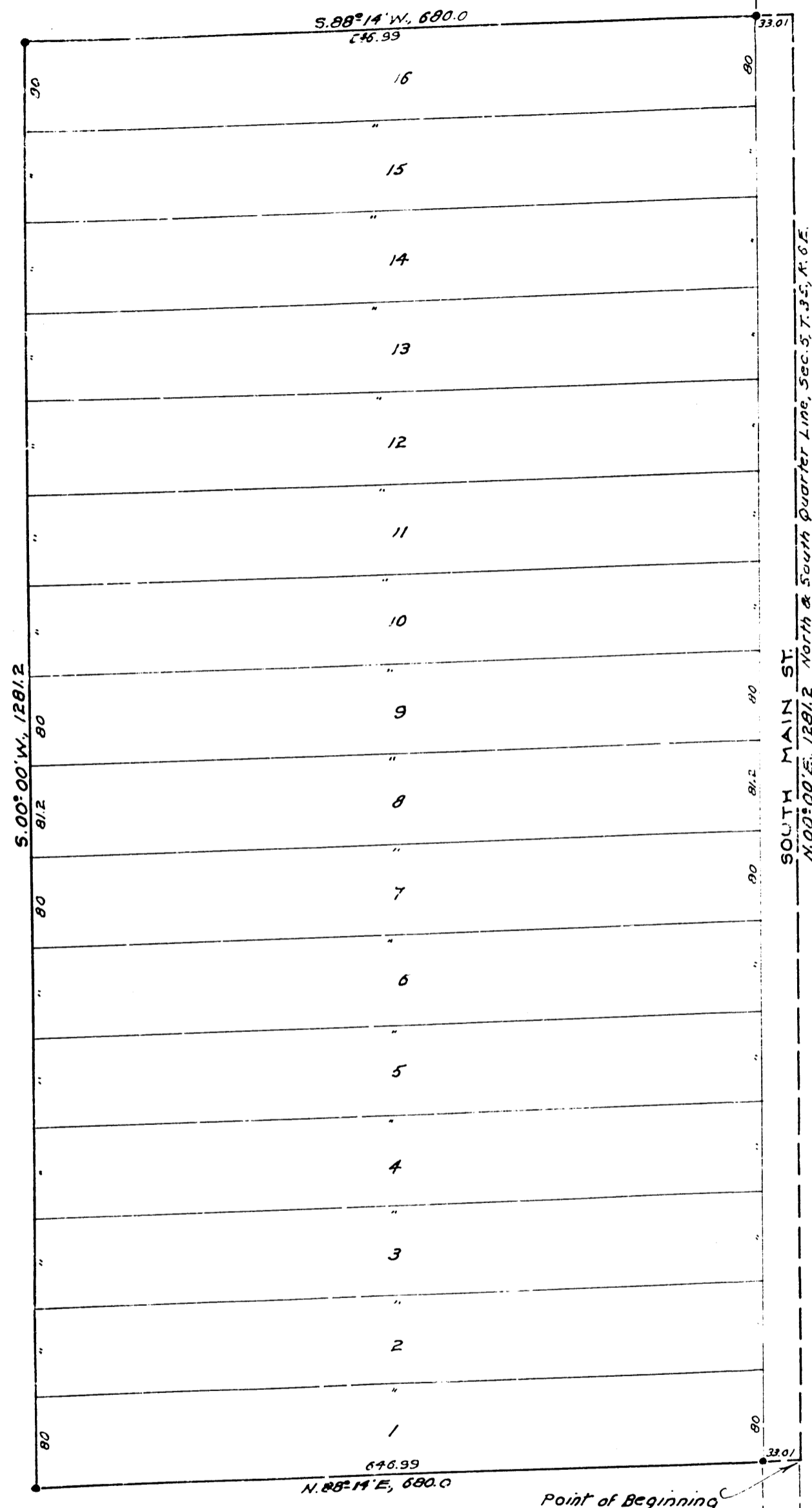


NOTE: All Dimensions are Given in Feet and Decimals Thereof.



"SOUTH MAIN WOODS"  
(NOT PART OF THIS PLAT)

ORIGINAL

South Quarter Corner, Sec. 5, T. 35, R. 6 E.

**"SOUTH MAIN ACRES"**  
PART OF EAST HALF EAST HALF, SOUTHWEST QUARTER  
SECTION 5, T. 35, R. 6 E., PITTSFIELD TOWNSHIP  
WASHTENAW COUNTY, MICHIGAN.

Scale 1 inch = 100 feet.

**DEDICATION: KNOW ALL MEN BY THESE PRESENTS,** That I, Eva B. McKenzie, as proprietor have caused the land embraced in the annexed plat to be surveyed, laid out and platted, to be known as "SOUTH MAIN ACRES", part of east half east half southwest quarter, section 5, T. 35, R. 6 E., Pittsfield Township, Washtenaw County, Michigan and that the streets and alleys as shown on said plat are hereby dedicated to the use of the public.

*Eva B. McKenzie*  
Eva B. McKenzie

Signed and Sealed in Presence of

*Stephen A. Barnett*  
Stephen A. Barnett

*Suele Barnett*  
Suele Barnett

STATE OF MICHIGAN } ss.  
County of Washtenaw }

On this 26 day of July, 1940 before me, a Notary Public in and for said county, personally came the above named Eva B. McKenzie, known to me to be the person who executed the above dedication, and acknowledged the same to be her free act and deed.

*James A. Owen*  
Notary Public, Washtenaw Co., Mich.  
My Commission expires July 1, 1942

**DESCRIPTION OF LAND PLATTED:** The land embraced in the annexed plat of "SOUTH MAIN ACRES" part of east half east half southwest quarter, section 5, T. 35, R. 6 E., Pittsfield Township, Washtenaw County, Michigan, is described as follows: Commencing at the south quarter corner, section 5, T. 35, R. 6 E., Washtenaw County, Michigan, and running thence N. 00° 00' E. along the north and south quarter line of said section 5 for 680.6 feet for a point of beginning; thence continuing N. 00° 00' E. along said north and south quarter line for 1281.2 feet; thence S. 88° 14' W. for 680.0 feet; thence S. 00° 00' W. for 1281.2 feet; thence N. 88° 14' E. for 680.0 feet to the point of beginning.

**SURVEYOR'S CERTIFICATE:** I hereby certify that the plat hereon delineated is a correct one and that permanent metal monuments consisting of bars not less than one half inch in diameter and 48 inches in length, encased in a concrete cylinder at least 4 inches in diameter and 48 inches in depth have been placed at points marked thus ● as thereon shown at all angles in the boundaries of the land platted, at all the intersections of streets, intersections of alleys, or of streets and alleys, and at the intersections of streets and alleys with the boundaries of the plat as shown on said plat.

*Harry A. Roschke*  
Harry A. Roschke  
Registered Professional Engineer.

**CERTIFICATE OF APPROVAL BY BOARD OF COUNTY ROAD COMMISSIONERS:** This plat has been examined and was approved on the 26 day of August, 1940 by the Washtenaw County Board of Road Commissioners.

*C. H. Ferguson*  
C. H. Ferguson Chairman

*John J. ...*  
John J. ... Member

*...*  
... Member

*...*  
... Member

**CERTIFICATE OF MUNICIPAL APPROVAL:** This plat was approved by the Township Board of the Township of Pittsfield at a meeting held March 26, 1940.

*Daniel H. Ellsworth*  
Daniel H. Ellsworth Clerk

**CERTIFICATE OF APPROVAL BY THE BOARD OF COUNTY AUDITORS:** Approved by the Board of County Auditors of Washtenaw County, Michigan, on the 26 day of August, 1940.

*L. O. Cushman*  
L. O. Cushman Chairman

*...*  
... Member

*...*  
... Member

*...*  
... Member

**CERTIFICATE AS TO COUNTY ROADS:** We hereby certify that said plat appears to include land located on a county road.

*L. O. Cushman*  
L. O. Cushman Chairman

*...*  
... Member

*...*  
... Member

*...*  
... Member

**COUNTY TREASURER'S CERTIFICATE:**

**RELATING TO TAXES:** Office of County Treasurer, Washtenaw County: I hereby certify that there are no tax liens or titles held by the State on the lands described hereon, and that there are no tax liens or titles held by individuals on said lands for the five years preceding the 27 day of August, 1940 and that the taxes for said period of five years are paid as shown by the records of this office.

This certificate does not apply to taxes, if any, now in process of collection by township, city or village collecting officers.

*C. E. Griffiths*  
C. E. Griffiths, County Treasurer

Examined and Approved

*Mayms Jewell Purdy*  
Mayms Jewell Purdy, Auditor General

RECORDS OF DEEDS  
Washtenaw County

RECORDED for Record, the 19th day of April, A. D. 1940 at 11:45 o'clock P. M. and recorded in Liber 10 of Plats  
Page 3  
*Katherine W. Shaw*  
Katherine W. Shaw  
Deputy