

Addendum #1

ITB # 4342

Summit Street 16" Water Main Replacement  
Through Wheeler Park



Monday, August 11, 2014

Bids Due:  
Wednesday, August 13, 2014 by 10:00 AM

Issued By:

City of Ann Arbor  
Procurement Unit  
301 E. Huron Street  
Ann Arbor, MI 48104

ADDENDUM #1 FOR THE SUMMIT STREET 16" WATER MAIN  
REPLACEMENT THROUGH WHEELER PARK  
CITY OF ANN ARBOR

ITB # 4342

1. The quantity of item #410, 16" Class 50 DIP Bends, has been revised from 8 to 12.
2. Revised bid forms are attached and are pages APP-1 and APP-2.
3. Sheet 5 has been revised to eliminate the plan view note which stated "22.5° V- BEND STA: 1+16, 1+20, 1+30 & 1+34". A copy of that plan sheet with the note marked out is also attached.
4. Please remember to acknowledge this addendum within your bid documents.

BID FORM  
Section 1 - Schedule of Prices

Item	Description	Unit	Estimated Quantity	Unit Price	Total Price
101	General Conditions, Max. \$10,000	LS	1	\$	\$
102	Audio Visual Tape Coverage (3 copies)	LS	1	\$	\$
110	Minor Traffic Control, Max. \$5,000	LS	1	\$	\$
111	Plastic Drum-Lighted - Furnish & Operate	EA	20	\$	\$
113	Barricade Type III-Lighted-Furnish & Operate	EA	6	\$	\$
115	Temporary Sign - Type B	SF	163	\$	\$
117	No Parking Sign	EA	4	\$	\$
120	Project Supervision, Max. \$5,000	LS	1	\$	\$
130	Protective Fencing	LF	1000	\$	\$
392	Pipe Undercut & Refill, 6A	CY	50	\$	\$
400	16" Class 50 DIP w/polywrap, TD I	LF	162	\$	\$
401	16" Class 50 DIP w/polywrap, TD III	LF	55	\$	\$
402	16" Class 50 DIP w/polywrap, TD V	LF	245	\$	\$
410	16" Class 50 DIP Bends	EA	<b>12</b>	\$	\$
481	Water Main Pipe Abandonment	LF	400	\$	\$
502	Remove Concrete Curb & Gutter	LF	43	\$	\$
503	Remove Concrete Sidewalk	SF	185	\$	\$
520	Machine Grading	LS	1	\$	\$
522	Subgrade Undercutting, Type II	CY	50	\$	\$
527	Aggregate Base Course - 21AA, CIP (Roadways, 8") (Basketball Court and Track, 6")	CY	280	\$	\$
528	Subbase, CIP, Class II	CY	2	\$	\$
533	HMA Pavement 13A - (Roadways - 4.5")	TON	93	\$	\$
534	HMA Pavement 13A - (Basketball Court and Track - 1.5")	TON	98	\$	\$
535	HMA Pavement 36A - (Basketball Court and Track - 1.5")	TON	98	\$	\$
550	Concrete Curb & Gutter	LF	43	\$	\$
552	4" Concrete Sidewalk	SF	145	\$	\$
553	6" Concrete Sidewalk Ramp	SF	40	\$	\$
557	Detectable Warning, Cast In Place	SF	10	\$	\$

TOTAL THIS PAGE (also to be entered on page BF-2): \$ \_\_\_\_\_

**Bold item is revised in the Addendum.**

BF-1 (APP-1)

August 11, 2014

BID FORM

Section 1 - Schedule of Prices (continued)

Item	Description	Unit	Estimated Quantity	Unit Price	Total Price
702	Inlet Filter	EA	8	\$	\$
703	Silt Fence	LF	375	\$	\$
901	Basketball Pole Assembly	EA	3	\$	\$
902	Concrete Foundation for Basketball Pole Assembly	EA	4	\$	\$
903	Basketball Court Color Coating	LS	1	\$	\$
904	Fence Removal/Welding Back	LS	1	\$	\$
905	Trex Retaining Wall	LS	1	\$	\$
906	Play Area Cross-section Repair	LS	1	\$	\$
907	Bench Removal/Installation	EA	1	\$	\$
908	Wood Retaining Wall	LS	1	\$	\$

TOTAL THIS PAGE: \$ \_\_\_\_\_

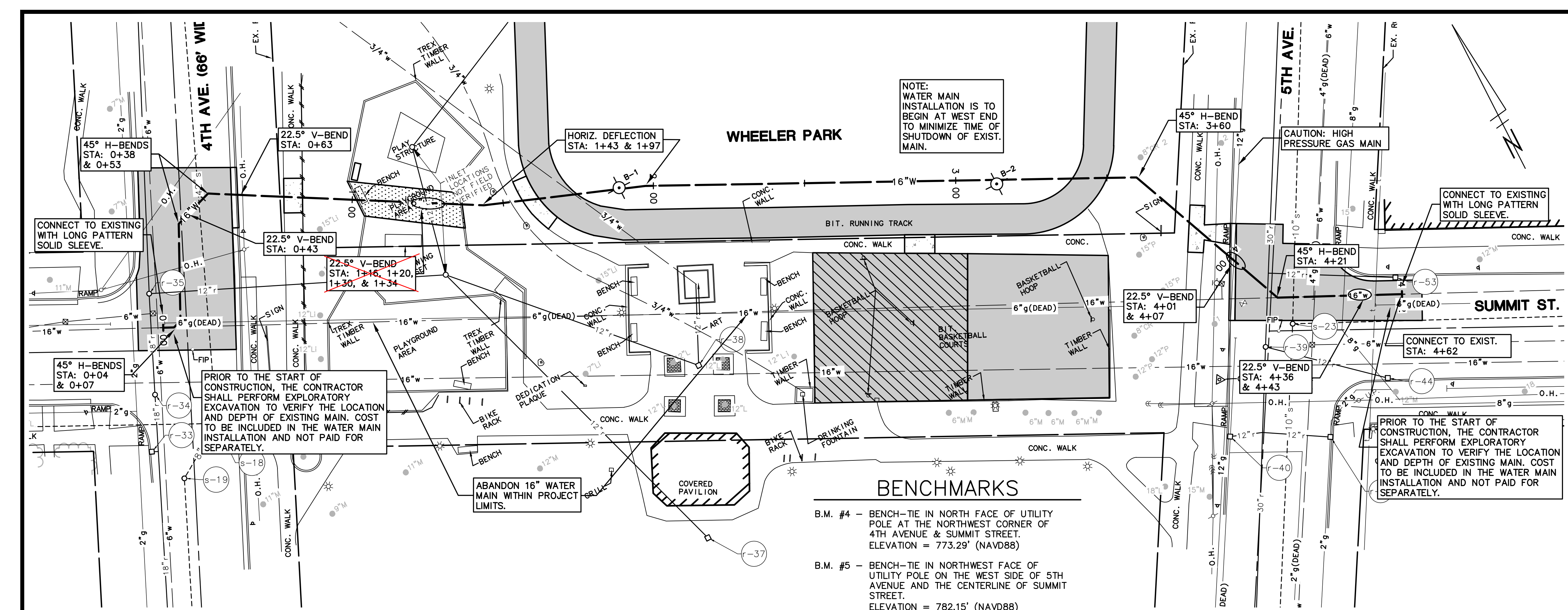
TOTAL FROM PAGE BF-1 (APP-1): \$ \_\_\_\_\_

TOTAL BASE BID: \$ \_\_\_\_\_

BF-2 (APP-2)

August 11, 2014





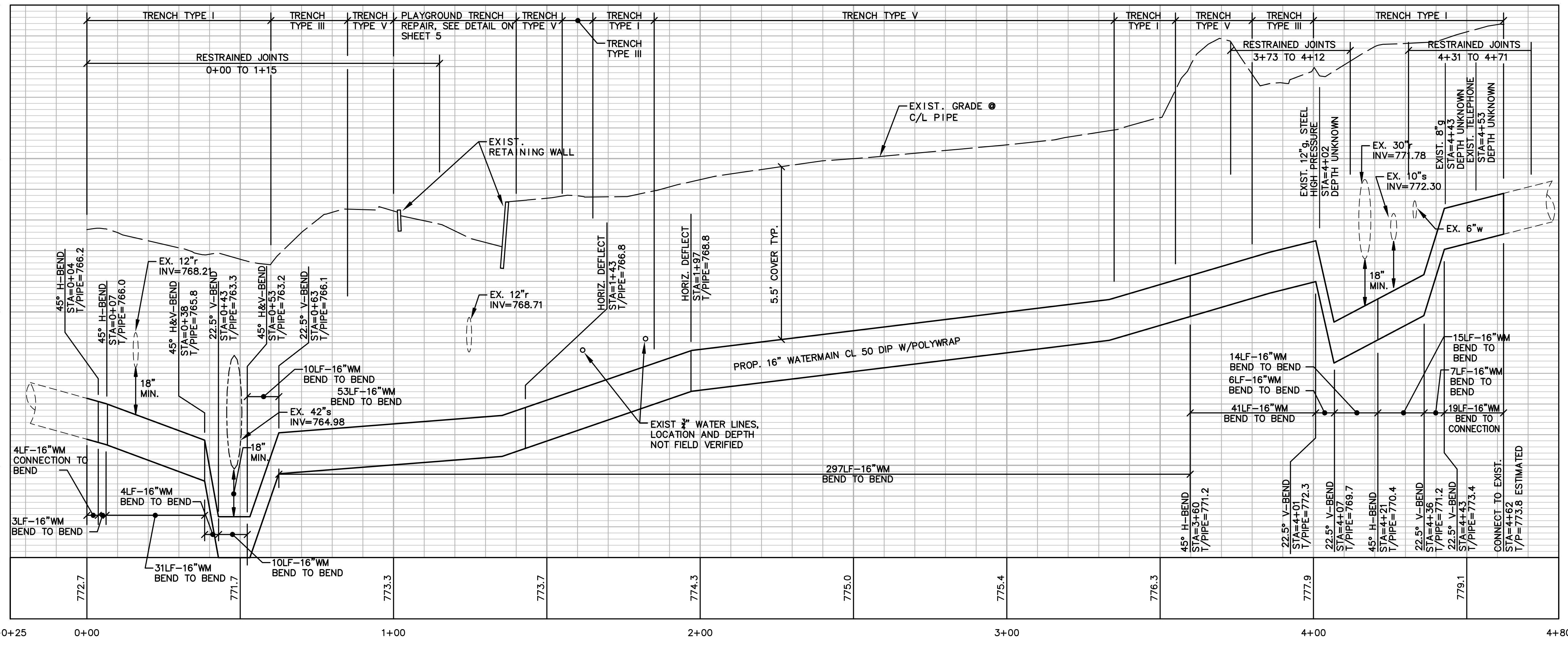
### LEGEND

838	EXIST. CONTOUR
×836.2	EXIST. SPOT ELEVATION
U.P.	EXIST. UTILITY POLE
OH	EXIST. OVERHEAD UTILITY LINE
*	EXIST. LIGHT POLE
t	EXIST. TELEPHONE LINE
e	EXIST. ELECTRIC LINE
g	EXIST. GAS LINE
g	EXIST. GAS VALVE
f.o.	EXIST. FIBER OPTIC LINE
w	EXIST. WATER MAIN
h	EXIST. HYDRANT
g	EXIST. GATE VALVE IN BOX
g	EXIST. GATE VALVE IN WELL
r	EXIST. STORM SEWER
o	EXIST. CATCH BASIN OR INLET
s	EXIST. SANITARY SEWER
o	EXIST. CLEANOUT
□ T.S.C.B.	TRAFFIC SIGNAL CONTROL BOX
□	SIGN
POST	RAILROAD CROSSING SIGN
WELL	POST
SINGLE TREE	WELL
FENCE	SINGLE TREE
○	FENCE
○ F	EXIST. BOULDER
○ F	FOUND IRON PIPE
○ F	FOUND MONUMENT
○ F	FOUND IRON ROD
△	CONTROL PT.

### BENCHMARKS


B.M. #4 - BENCH-TIE IN NORTH FACE OF UTILITY POLE AT THE NORTHWEST CORNER OF 4TH AVENUE & SUMMIT STREET. ELEVATION = 773.29' (NAVD88)

B.M. #5 - BENCH-TIE IN NORTHWEST FACE OF UTILITY POLE ON THE WEST SIDE OF 5TH AVENUE AND THE CENTERLINE OF SUMMIT STREET. ELEVATION = 782.15' (NAVD88)



- ### WATER MAIN CONSTRUCTION NOTES:
- FOR EROSION CONTROL ITEMS SEE SHEET 4.
  - ALL WATER MAIN WORK SHALL BE STAGED IN ACCORDANCE WITH THE DETAILED SPECIFICATION AND AS DIRECTED BY THE ENGINEER. THE CONTRACTOR SHALL BE RESPONSIBLE FOR COORDINATING ALL WORK, CONSTRUCTION METHODS, AND EQUIPMENT TO COMPLY WITH THE CONTRACT REQUIREMENTS.
  - THE CONTRACTOR SHALL CAREFULLY PROTECT FROM DAMAGE OR INJURY DURING CONSTRUCTION OPERATIONS ALL UTILITIES NOT DESIGNATED FOR REMOVAL OR ABANDONMENT. EXISTING FACILITIES NOT DESIGNATED FOR REMOVAL OR ABANDONMENT BUT WHICH ARE DAMAGED BY THE CONTRACTOR'S OPERATION SHALL BE REPAIRED OR REPLACED BY THE CONTRACTOR AT HIS SOLE EXPENSE, IN A MANNER THAT IS APPROVED BY THE ENGINEER.
  - THE EXISTING UTILITIES SHOWN ON THESE PLANS REPRESENT THE BEST INFORMATION AVAILABLE AS OBTAINED THROUGH SURVEYS AND/OR EXISTING PLANS. THIS INFORMATION DOES NOT RELIEVE THE CONTRACTOR OF THE RESPONSIBILITY TO BE SATISFIED AS TO ITS ACCURACY AND/OR THE LOCATION OF EXISTING UTILITIES. IF STORM, SANITARY, OR WATER MAINS CROSS WITH LESS THAN 18" CLEARANCE, THEY SHALL BE SADDLED (SEE UTD DETAIL #3). IF STORM, SANITARY, OR WATER MAINS CROSS OTHER UTILITIES, CONTACT THEIR RESPECTIVE OWNERS FOR INFORMATION ON HOW TO PROCEED. PAYMENT FOR THE COORDINATION EFFORTS, CONCRETE SADDLES, AND ANY OTHER ASSOCIATED ITEMS SHALL BE INCLUDED IN THE RELATED STORM, SANITARY, OR WATER MAIN ITEMS AND SHALL NOT BE PAID FOR SEPARATELY.
  - THE CONTRACTOR WILL ONLY BE ALLOWED TO SHUT DOWN THE EXISTING 16" WATER MAIN FOR A MAXIMUM DURATION OF 8 HOURS IN ANY ONE SHUTDOWN, IN ANY GIVEN 24 HOUR PERIOD, EXCEPT WHEN DOING FINAL TESTING, WHEN IT CAN BE SHUT DOWN FOR TWO WEEKS MAXIMUM. SHUTDOWN OF THE EXISTING WATERMAIN MUST BE SCHEDULED WITH THE ENGINEER A MINIMUM OF 3 WORKING DAYS IN ADVANCE OF THE INTENDED SHUTDOWN AND CONSTRUCTING THE WATER MAIN WILL NOT BE ALLOWED TO TAKE PLACE ON A SATURDAY OR A SUNDAY.
  - THE CONTRACTOR SHALL PROPOSE A METHOD(S) AND EQUIPMENT FOR THE REVIEW AND APPROVAL OF THE ENGINEER TO BE USED FOR THE FLUSHING OF CHLORINATED WATER FROM PROPOSED WATER MAIN INTO EXISTING SANITARY SEWERS. CHLORINATED WATER SHALL NOT BE ALLOWED IN STORM SEWERS OR BIOSWALES, ANY AND ALL MEASURES NECESSARY TO COMPLY WITH THIS REQUIREMENT SHALL BE INCLUDED IN THE COST OF THE WATER MAIN INSTALLATION AND WILL NOT BE PAID FOR SEPARATELY.
  - UPON COMPLETION OF THE 16" WATER MAIN CONSTRUCTION AND HYDROSTATIC AND BACTERIOLOGICAL TESTING, THE CONTRACTOR SHALL REMOVE THE TEMPORARY WATER MAIN TESTING AND CONNECTION ASSEMBLY AND CONSTRUCT THE PERMANENT WATER MAIN AS SHOWN ON THE PLAN SHEET. ALL WORK ASSOCIATED WITH REMOVING THE TEMPORARY TESTING CONNECTION AND CONSTRUCTING THE FINAL PERMANENT CONNECTION WILL NOT BE PAID FOR SEPARATELY, BUT SHALL BE INCLUDED IN THE RELATED ITEMS OF WORK.


M:\Civi3d\_Proj\4041\Construction\PH1\4041WMI.dwg Dwg Created: 22-May-14 Plot Date: 22-Jul-14



Know what's below.  
Call before you dig.

	<p>DATE</p> <p>08-11-2014</p>
	<p>DESCRIPTION</p> <p>1 ADDENDUM #1</p>
	<p>REV.</p> <p>1</p>

CITY OF ANN ARBOR  
PUBLIC SERVICE  
301 STATE STREET  
ANN ARBOR, MI 48107-8847  
www.a2gov.org



PROJECT MANAGEMENT - PUBLIC SERVICES - CITY OF ANN ARBOR

**SUMMIT STREET**

**16" WATER MAIN**

**REPLACEMENT THROUGH WHEELER PARK**

**WATER MAIN PLAN AND PROFILE**

SCALE PLAN: 1"=20'  
PROFILE: 1"=2'

DRAWING No.  
**2014-022-WMI**

SHEET No.  
**5 OF 7**