

"ASSESSOR'S PLAT No 20

REPLAT OF A PART OF LOTS 10, 11 AND 15, AND ALL OF LOTS FROM 1 THRU 9 AND 16 THRU 22 OF STOCKING AND MAYNARD PLAT, BEING A PART OF THE NW 1/4 OF SECTION 29, T.2.S., R.6.E. IN THE

CITY OF ANN ARBOR,
WASHTENAW CO, MICHIGAN.

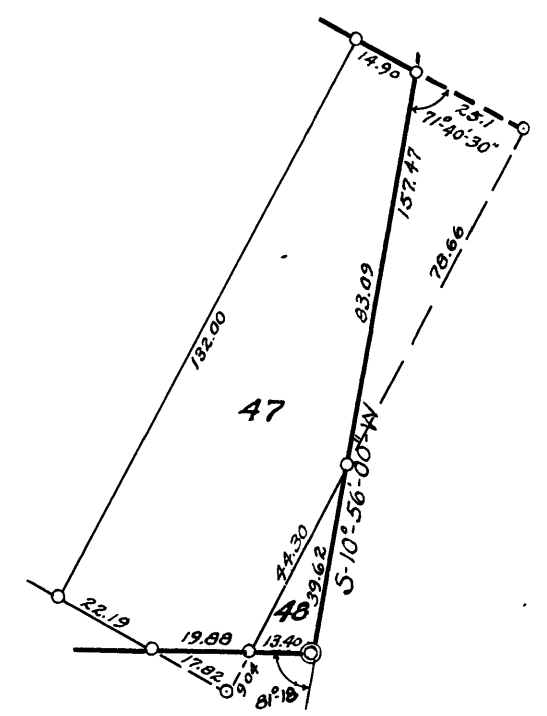
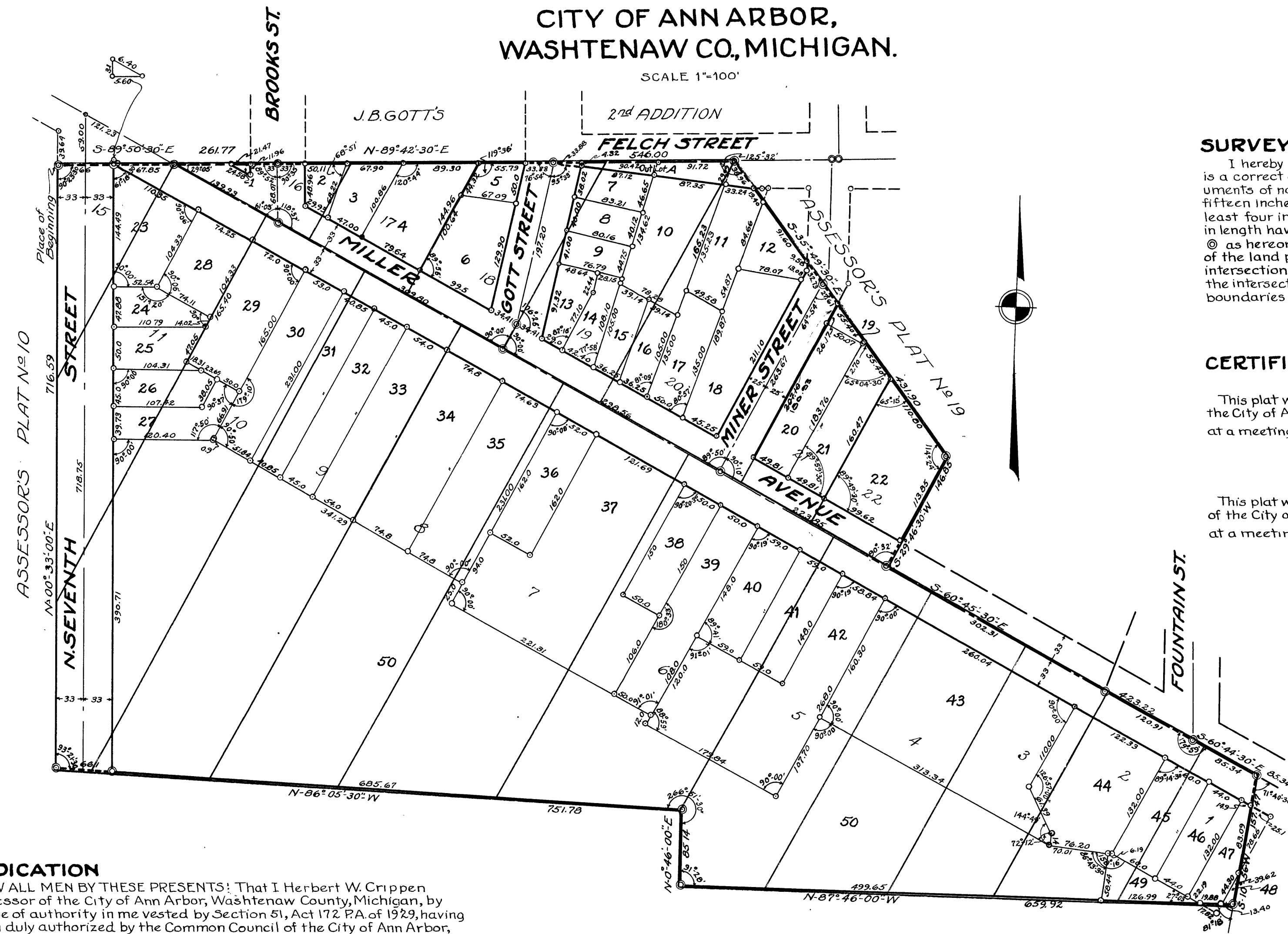
SCALE 1"=100'

Washtenaw
Assessor's Plat No 20
Mar 18 1932
John S. Cummings
Assessor of Washtenaw Co

Mar 17-1932
Geo S. Howell

1 OF 1
03/18/1932
ASSESSOR'S PLAT NO. 20
PAGE 1

Mar 17 1932
Geo S. Howell
Mar 24 1932
Geo S. Howell



SURVEYORS CERTIFICATE

I hereby certify that the plat hereon delineated is a correct one and that permanent metal monuments of not less than one inch in diameter and fifteen inches in length set in a concrete base at least four inches in diameter and forty eight inches in length have been placed at points marked thus: © as hereon shown at all angles in the boundaries, of the land platted, at all the intersections of streets, intersections of streets and alleys, or of alleys, and at the intersections of streets and alleys with the boundaries of the plat as shown on said plat.

George H. Sandenburgh
Registered Civil Engineer.

CERTIFICATE OF MUNICIPAL APPROVAL

This plat was approved by the Common Council of the City of Ann Arbor, Washtenaw Co, Michigan at a meeting held Feb 11/1932

Ind Perry
Clerk

This plat was approved by the Board of Public Works of the City of Ann Arbor, Washtenaw Co, Michigan at a meeting held Jan 20/1932

Ind Perry
Clerk

DEDICATION

KNOW ALL MEN BY THESE PRESENTS: That I Herbert W. Crippen Assessor of the City of Ann Arbor, Washtenaw County, Michigan, by virtue of authority in me vested by Section 51, Act 172 P.A. of 1929, having been duly authorized by the Common Council of the City of Ann Arbor, Washtenaw Co, Michigan, have caused the land described in the annexed plat to be surveyed, laid out and platted, to be known as "Assessor's Plat No. 20, Replat of a part of Lots 10, 11 and 15, and all of Lots from 1 thru 9 and 16 thru 22 of STOCKING AND MAYNARD PLAT, being a part of the NW 1/4 of Section 29, T.2.S., R.6.E. in the City of Ann Arbor, Washtenaw County, Michigan, and that the streets and alleys as shown on said plat are hereby dedicated to the use of the public.

Herbert W. Crippen
Assessor of the City of Ann Arbor,
Washtenaw Co, Michigan.

Witnesses
Fred R. Seard

ACKNOWLEDGMENT

STATE OF MICHIGAN }
COUNTY OF WASHTENAW } ss
On this 21st day of February A.D. 1932 before me a Notary Public in and for said County, personally came the above named Herbert W. Crippen, Assessor of the City of Ann Arbor, Washtenaw Co, Michigan, known to me to be the person who executed the above dedication and acknowledged the same to be his free act and deed as such Assessor.

Ernest M. Wheeler
Notary Public in and for Washtenaw
County, Michigan.

My Commission expires _____

DESCRIPTION

Commencing at the Section Corner which is common to Sections 19, 20, 29 and 30, Ann Arbor, Township, Washtenaw County, Michigan; thence S-89°-50'-30" E, 405.27 feet to the place of beginning; thence S-89°-50'-30" E in the same line produced 261.77 feet to the Center line of Brooks Street; thence N-89°-42'-30" E, 546.00 feet; thence S-35°-49'-30" E, 431.90 feet; thence S-29°-46'-30" W, 146.85 feet to the Center line of Miller Avenue; thence S-60°-45'-30" E along the Center line of Miller Avenue 423.22 feet to its intersection with the Center line of Fountain Street; thence S-60°-44'-30" E, along the Center line of Miller Avenue 85.34 feet; thence S-10°-56'-00" W, 157.47 feet; thence N-87°-46'-00" W, 659.92 feet; thence N-0°-46'-00" E, 85.14 feet; thence N-86°-05'-30" W, 751.78 feet; thence N-0°-33'-00" E along the West side of N. Seventh Street 716.59 feet to the Place of Beginning.

CERTIFICATE OF APPROVAL BY BOARD OF COUNTY AUDITORS

Approved by the Board of County Auditors of Washtenaw Co, Michigan this 26 day of Feb 1932

Chairman
John M. Fowler
Clara L. Brown

Filed 1/23/32