

AUG 11 1953

SHEET 1 OF 3

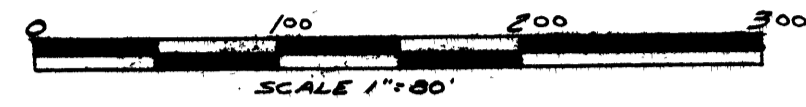
SUNNYSIDE

A SUBDIVISION OF PART OF SECTION 31
TOWN 2 SOUTH RANGE 6 EAST
CITY OF ANN ARBOR,
WASHTENAW COUNTY, MICHIGAN

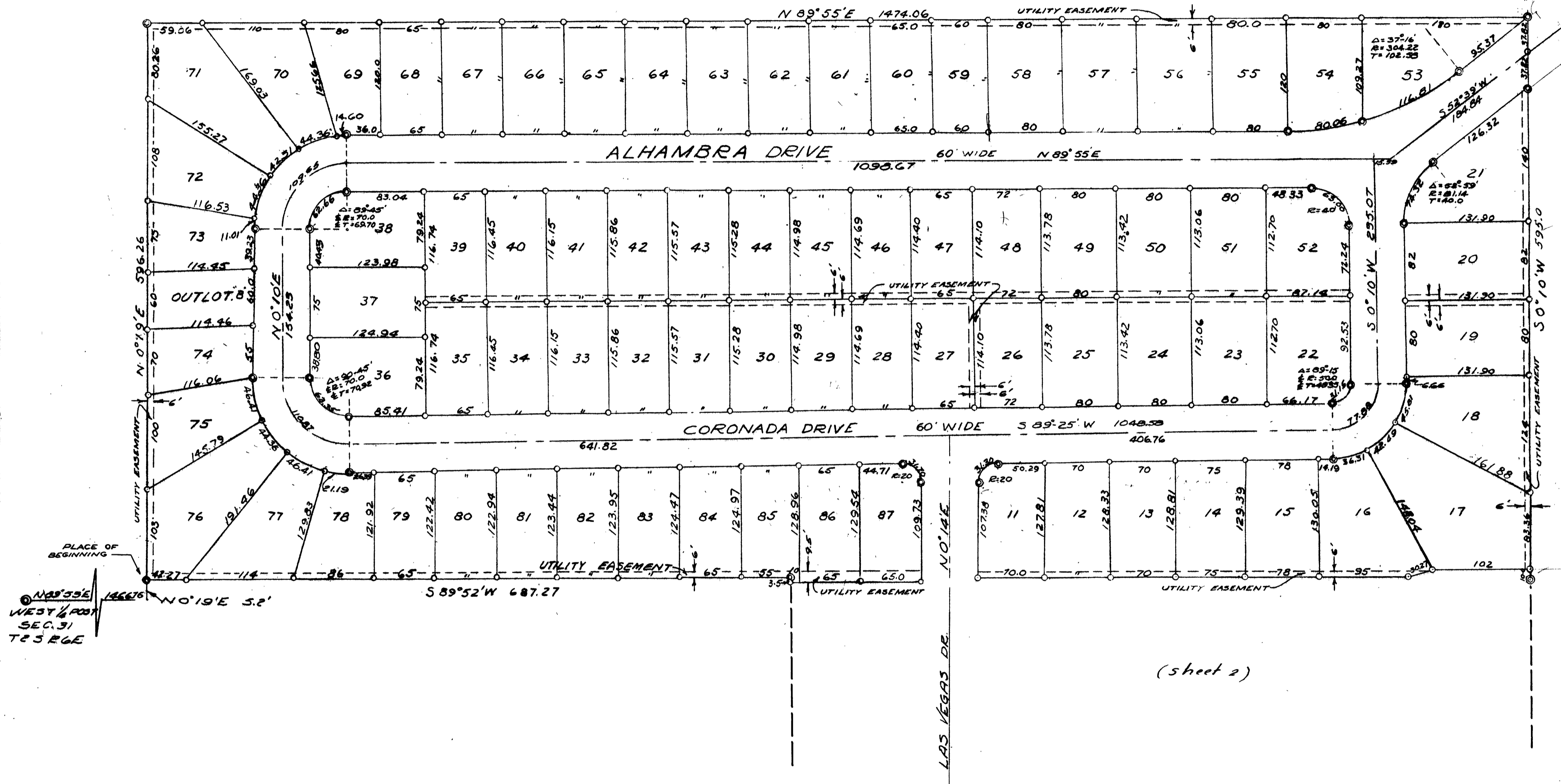


P0399001
SUNNYSIDE
SHEET 111 PAGE: 65-67 08/14/1953

SURVEY BY: ATWELL-HICKS INC.



ALL DIMENSIONS ARE IN FEET AND DECIMALS THEREOF
ALL CURVE DISTANCES ARE ARC DISTANCES



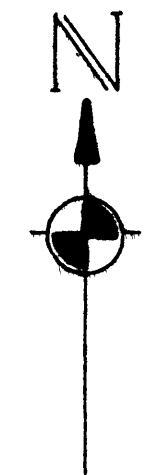
(sheet 2)

(Sheet 1)

PO399002
SUNNYSIDE
LIBER: 11 PAGE: 65-67

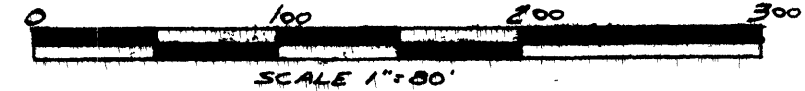
2 OF 3
08/14/1953

SHEET 2 OF 3



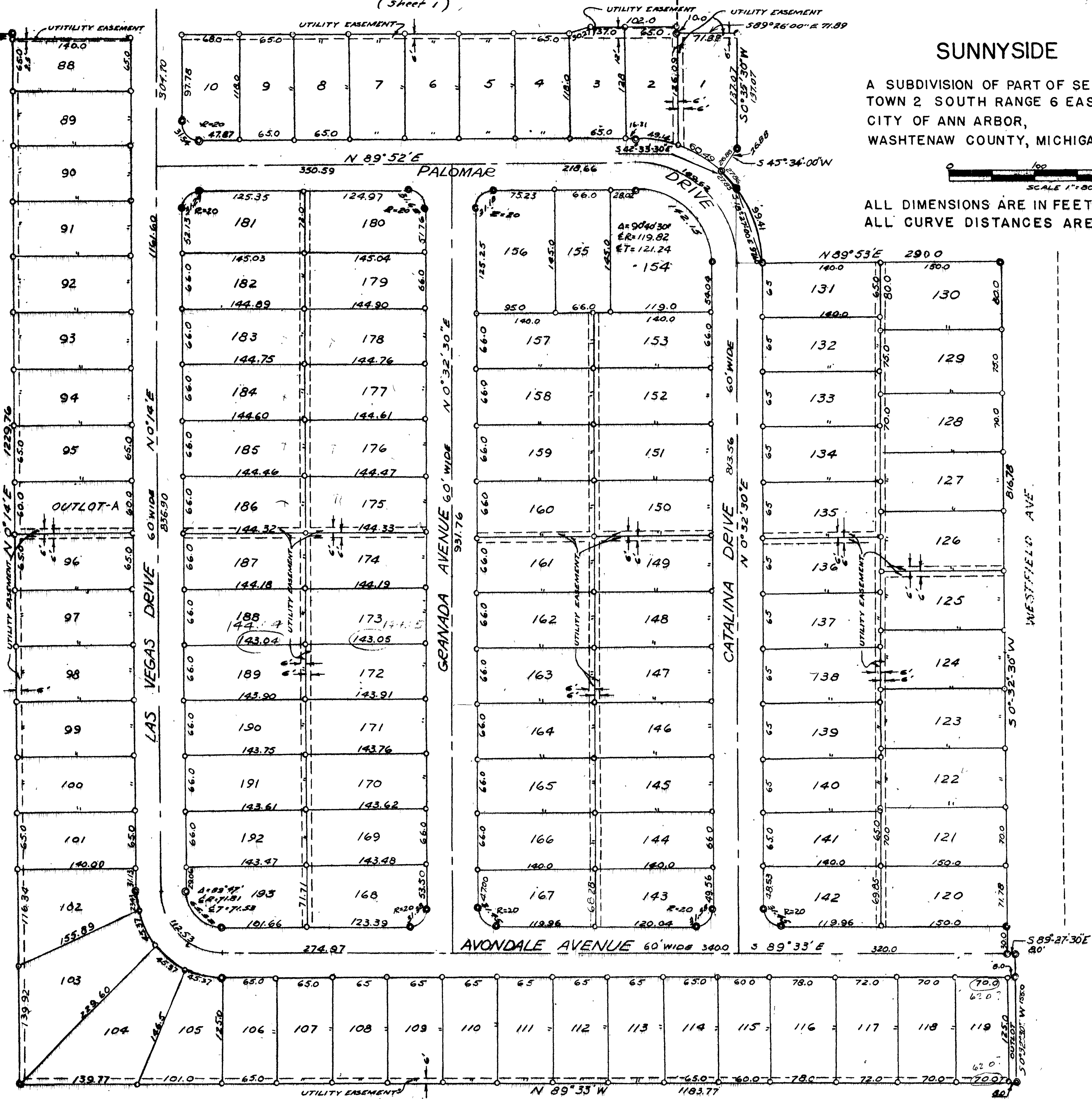
SUNNYSIDE

A SUBDIVISION OF PART OF SECTION 31
TOWN 2 SOUTH RANGE 6 EAST
CITY OF ANN ARBOR,
WASHTENAW COUNTY, MICHIGAN



ALL DIMENSIONS ARE IN FEET AND DECIMALS THEREOF
ALL CURVE DISTANCES ARE ARC DISTANCES

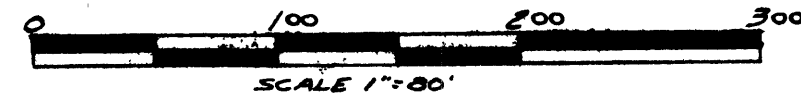
SURVEY BY: ATWELL-HICKS INC.



SUNNYSIDE

A SUBDIVISION OF PART OF SECTION 31
TOWN 2 SOUTH RANGE 6 EAST
CITY OF ANN ARBOR,
WASHTENAW COUNTY, MICHIGAN

SURVEY BY: ATWELL-HICKS INC.



ALL DIMENSIONS ARE IN FEET AND DECIMALS THEREOF
ALL CURVE DISTANCES ARE ARC DISTANCES

DEDICATION

KNOW ALL MEN BY THESE PRESENTS, that we
Hannah Building Co.
Michigan corporation by Eugene H.
Hannah, President, and Eunice L. Hannah, Vice
President, as proprietor, have caused the land embraced in the annexed plat
to be surveyed, laid out and platted to be known as SUNNYSIDE, a Sub-
division of part of Section 31, Town 2 South, Range 6
East, City of Ann Arbor, Washtenaw County, Michigan,
and that the Drives and AVENUES as shown on said plat are
hereby dedicated to the use of the public.

Signed and Sealed in
the Presence of: Hannah Building Co.
Frances Carmean (Witness) Eugene H. Hannah President
Marie Gray (Witness) Eunice L. Hannah Vice President

ACKNOWLEDGMENT

STATE OF Michigan }
County of Washtenaw } ss.
On this 4th day of June A.D. 1953 before
me Frances Carmean, a Notary Public in and for
said county appeared Eugene H. Hannah and Eunice L.
Hannah
to me personally known, who being each by me duly sworn did say that they are the
President and Vice President, respectively of the Hannah
Building Co. Michigan corporation,
and that the seal affixed to said instrument is the corporate seal of said corporation and
that said instrument was signed and sealed in behalf of said corporation by authority
of its Board of Directors and the said Eugene H. Hannah and
Eunice L. Hannah acknowledged said
instrument to be the free act and deed of said corporation.

Frances Carmean
Notary Public Livingston County
Michigan in Washtenaw County
My Commission expires August 13, 1956

DESCRIPTION OF LAND PLATTED

The land embraced in the annexed plat of SUNNYSIDE, a Subdivision
of part of Section 31, Town 2 South, Range 6 East, City
of Ann Arbor, Washtenaw County, Michigan

is described as follows:
Commencing at the West 1/4 post of Section 31,
Town 2 South, Range 6 East, Ann Arbor Township,
Washtenaw County, Michigan, thence N. 89° 53'
00" E., along the East and West 1/4 line 1466.76
feet, thence N. 0° 19' 00" E., 5.2 feet for a
PLACE OF BEGINNING: thence continuing N. 0°
19' 00" E., 596.26 feet, thence N. 89° 55' 00"
E., 1474.06 feet, thence S. 0° 10' 00" W., 595.0
feet, thence S. 89° 26' 00" E., 71.89 feet, thence
S. 0° 35' 30" W., 137.07 feet, thence S. 45° 34'
00" W., 26.88 feet, thence Southeasterly along
the arc of a circular curve concave to the Southwest
the radius of which is 149.95 feet and the chord of
which bears S. 42° 33' 30" E., 27.83 feet, thence
continuing Southerly along the arc of the above des-
cribed curve the chord of which bears S. 18° 27'
00" E., 97.60 feet, thence N. 89° 53' 00" E.,
290.0 feet, thence S. 0° 32' 30" W. 816.78 feet,
thence S. 89° 27' 30" E., 8.0 feet, thence S. 0° 32'
30" W., 155.0 feet, thence N. 89° 33' 00" W., 1183.
77 feet, thence N. 0° 14' 00" E., 1229.76 feet, thence
S. 89° 52' 00" W., 687.27 feet to the place of Beginn-
ing being a part of said Section 31, City of Ann Arbor,
Washtenaw County, Michigan-

APPROVAL BY COUNTY PLAT BOARD

This plat was approved on the 6th day of
August 1953 by the
Washtenaw County Plat Board

Thomas A. FitzGerald (County Register of Deeds)
J. Martin Rempp, County Auditor
Martin Rempp
Adolph F. Gross, County Auditor
Adolph F. Gross
Herbert G. Loeffler, County Auditor
Herbert G. Loeffler

MUNICIPAL APPROVAL

This plat was approved by the Common Council
of the City of Ann Arbor, Michigan, at a meet-
ing held August 3, 1953.

Fred J. Looker (clerk)

CERTIFICATE OF APPROVAL BY THE CITY PLANNING COMMISSION

This plat was approved by the Planning Commission
of the City of Ann Arbor, at a meeting held on the
23rd day of June 1953.

John E. Swisher Jr. (chairman)
Sybil K. Bennett (Secretary)

MUNICIPAL APPROVAL

This plat was approved by the Board of Public Works
of the City of Ann Arbor
at a meeting held July 8, 1953.

Fred J. Looker (Clerk)

SURVEYOR'S CERTIFICATE

I hereby certify that the plat hereon delineated is a correct
one and that permanent metal monuments consisting of bars
not less than one-half inch in diameter and 48 inches in
length, or shorter bars of not less than one-half inch in
diameter lapped over each other at least 6 inches with an
over-all length of not less than 48 inches, encased in a
concrete cylinder at least 4 inches in diameter and 48 inches
in depth have been placed at points marked thus (⊙) as
thereon shown at all angles in the boundaries of the land
platted, at all the intersections of Avenues, intersections of
Drives, or of Avenues and Drives, and at the intersections
of Avenues and Drives with the boundaries of the plat as
shown on said plat.

Herbert S. Hicks
Registered Land Surveyor Registered Pro-
fessional Engineer
Herbert S. Hicks No. 1715

COUNTY TREASURER'S CERTIFICATE

Office of County Treasurer, WASHTENAW County.
I hereby certify, that there are no tax liens or titles held by the State on the lands de-
scribed hereon, and that there are no tax liens or titles held by individuals on said lands,
for the five years preceding the 7th day of
August 1953, and that the taxes for said period of
five years are all paid, as shown by the records of this office.
This certificate does not apply to taxes, if any, now in process of collection by township,
city or village collecting officers.

W. F. Verner (County Treasurer)

I hereby certify that this copy is a true copy of
the map or plat forwarded the Register of Deeds
for recording
Date August 11, 1953
Filed in Auditor General's Dept.
Date August 17, 1953
Examined and Approved
Date August 11, 1953
John B. Hester
PLAT ENGINEER

COPY
Register's Office
Washtenaw County, Mich.
Plat of Sunnyside
City of Ann Arbor
was Recorded this 14th day of
August A.D. 1953 at 2:10 o'clock
P.M. in Liber 11 of Plat
on Page 65, 66, 67
Thomas A. FitzGerald
ORIGINAL ON FILE