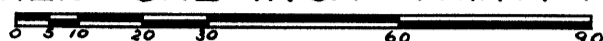


SIMPSON MANOR

A SUBDIVISION OF LOTS 89, 90 AND 91
AND A PART OF LOTS 85, 86, 87, 88, 92, 93, 94, AND 95
OF

SOUTH PARK
IN THE CITY OF ANN ARBOR
WASHTENAW COUNTY, MICHIGAN.

SCALE: ONE INCH = THIRTY FEET.



May 26-1930
J. B. Hume

DEDICATION

KNOW ALL MEN BY THESE PRESENTS, That we William Simpson as proprietor, and Mary E. Simpson, his wife, have caused the land embraced in the annexed plat to be surveyed, laid out and platted, to be known as "SIMPSON MANOR" a subdivision of lots 89, 90 and 91 and a part of lots 85, 86, 87, 88, 92, 93, 94 and 95 of South Park in the City of Ann Arbor, Washtenaw County, Michigan, and that the streets and alleys as shown on said plat are hereby dedicated to the use of the public.

Signed and Sealed in Presence of:
H. H. Atwell } William Simpson (L.S.)
J. Martin Rempp } Mary E. Simpson (L.S.)

STATE OF MICHIGAN,
COUNTY OF WASHTENAW,

On this 24th day of January, 1930, before me, a Notary Public in and for said county, personally saw the above named William Simpson and Mary E. Simpson, his wife, known to me the persons who executed the above dedication, and acknowledged the same to be their free act and deed.

J. Martin Rempp
Notary Public, Washtenaw Co., Michigan.
Commission expires July 28, 1933.

DESCRIPTION

The land embraced in the annexed plat of "SIMPSON MANOR" a subdivision of lots 89, 90 and 91 and a part of lots 85, 86, 87, 88, 92, 93, 94 and 95 of South Park in the City of Ann Arbor, Washtenaw County, Michigan is described as follows:

Commencing at the north east corner of lot 88 of "South Park"; thence west 263.86 feet in the north line of lots 88 and 89; thence south 284.67 feet; thence north easterly 123.96 feet in the arc of a circular curve to the left of radius 187.49 feet thru a central angle of 37 degrees and 53 minutes; thence north 31 degrees and 27 minutes east 94.10 feet; thence north easterly 153.59 feet in the arc of a circular curve to the right of radius 186.6 feet thru a central angle of 44 degrees and 50 minutes; thence north 00 degrees and 03 minutes east 38.64 feet to the place of beginning.

TAX CERTIFICATE

OFFICE OF THE COUNTY TREASURER
WASHTENAW COUNTY, MICHIGAN.

I hereby certify, That there are... tax liens or titles held by the State on the lands described above and that there are... tax liens of titles held by individuals on said lands, for the five years preceding the... day of February, 1930, and that the taxes for said period of five years are... paid, as shown by the records of this office.

Frank H. Ticknor
County Treasurer.

SURVEYOR'S CERTIFICATE.

I hereby certify that the plat hereon delineated is a correct one and that permanent metal monuments of not less than one inch in diameter and fifteen inches in length set in a concrete base at least four inches in diameter and forty-eight inches in depth have been placed at points marked thus @ as thereon shown at all angles in the boundaries of the land platted, at all intersections of streets, intersections of alleys, or of streets and alleys, and at the intersections of streets and alleys with the boundaries of the plat as shown on said plat.

H. H. Atwell
Registered Civil Engineer.

CERTIFICATE OF APPROVAL BY THE COMMON COUNCIL.

This plat was approved by the Common Council of the City of Ann Arbor, Washtenaw County, Michigan at a meeting held May 5, 1930.

Fred C. Perry
Clerk

CERTIFICATE OF APPROVAL BY THE BOARD OF PUBLIC WORKS.

This plat was approved by the Board of Public Works of the City of Ann Arbor, Washtenaw County, Michigan, at a meeting held February 1, 1930.

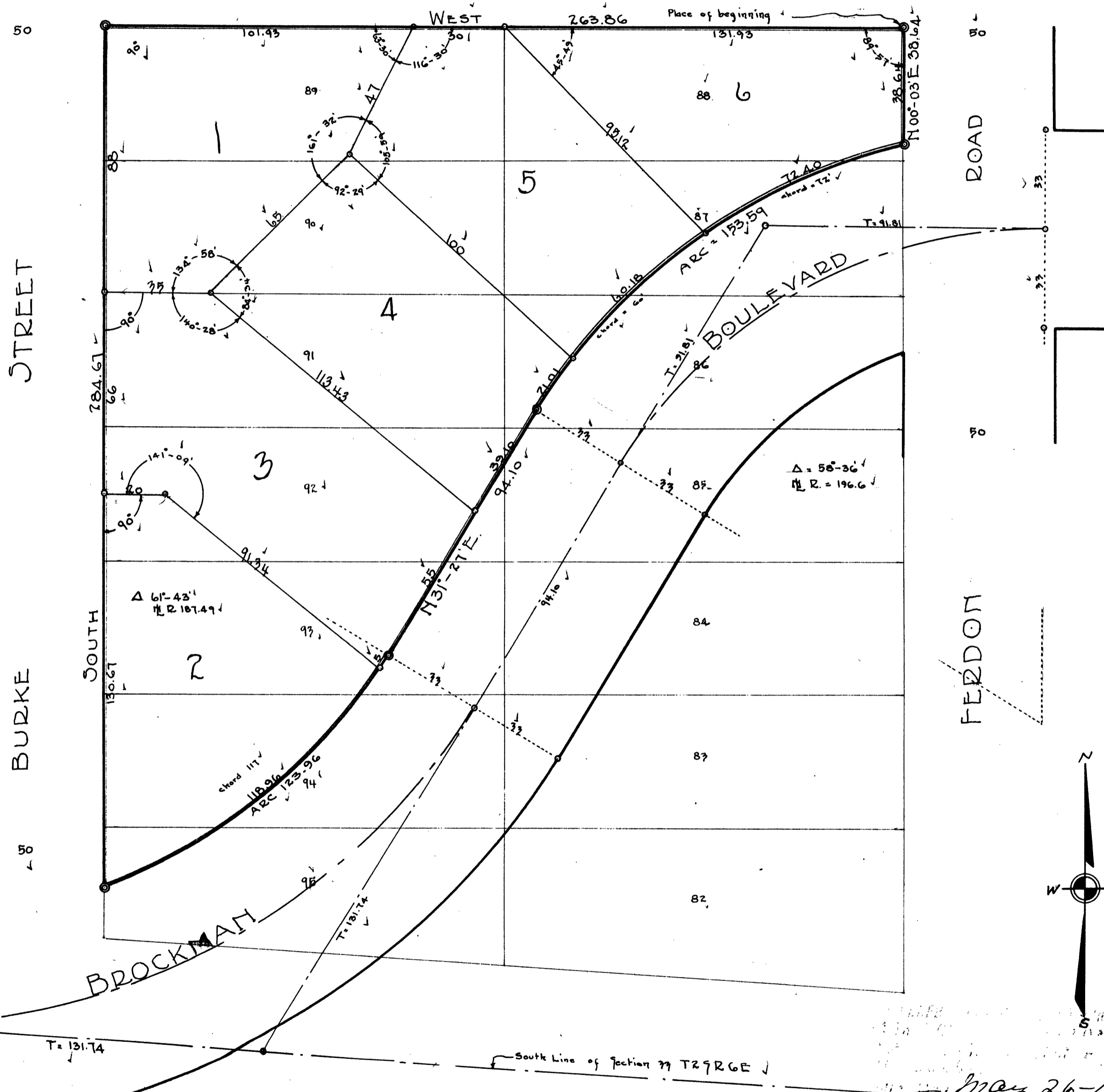
Fred C. Perry

CERTIFICATE OF APPROVAL BY THE BOARD OF COUNTY AUDITORS.

Approved by the Board of County Auditors, Washtenaw County, Michigan, this 16th day of May, 1930.

L. O. Cushing
Chairman
Willis M. Fowler
Elmer L. Brown

Note: All Dimensions are given in feet and decimals thereof.



FILED IN REGISTERED DEEDS & DEEDS
June 2-1930
J. B. Hume
Recorder
Simpson Manor
was filed on 28th day of May 1930
John D. Cummings