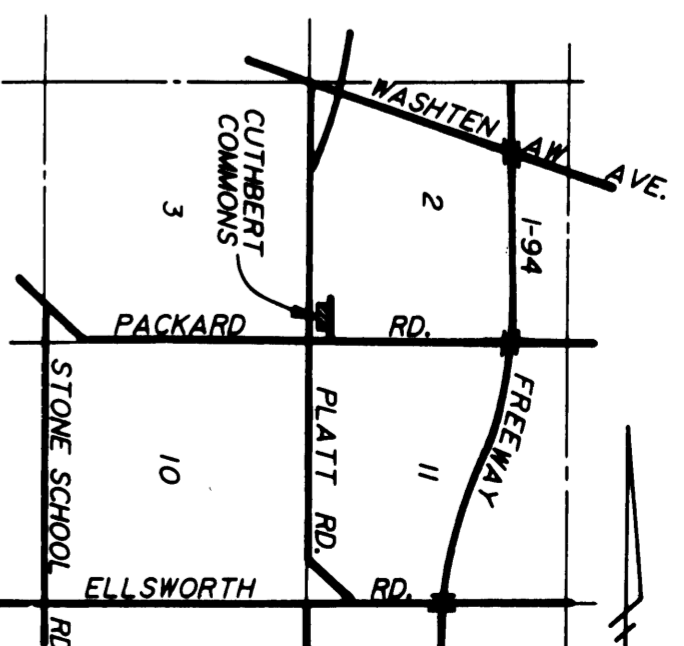
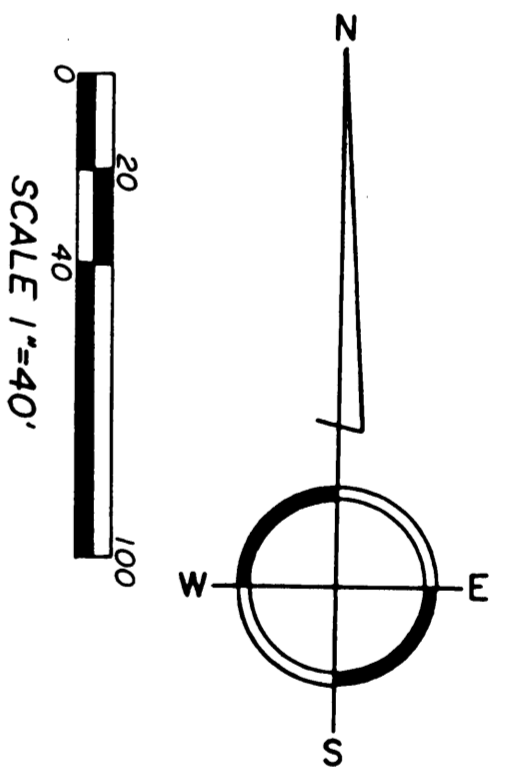


# CUTHBERT COMMONS

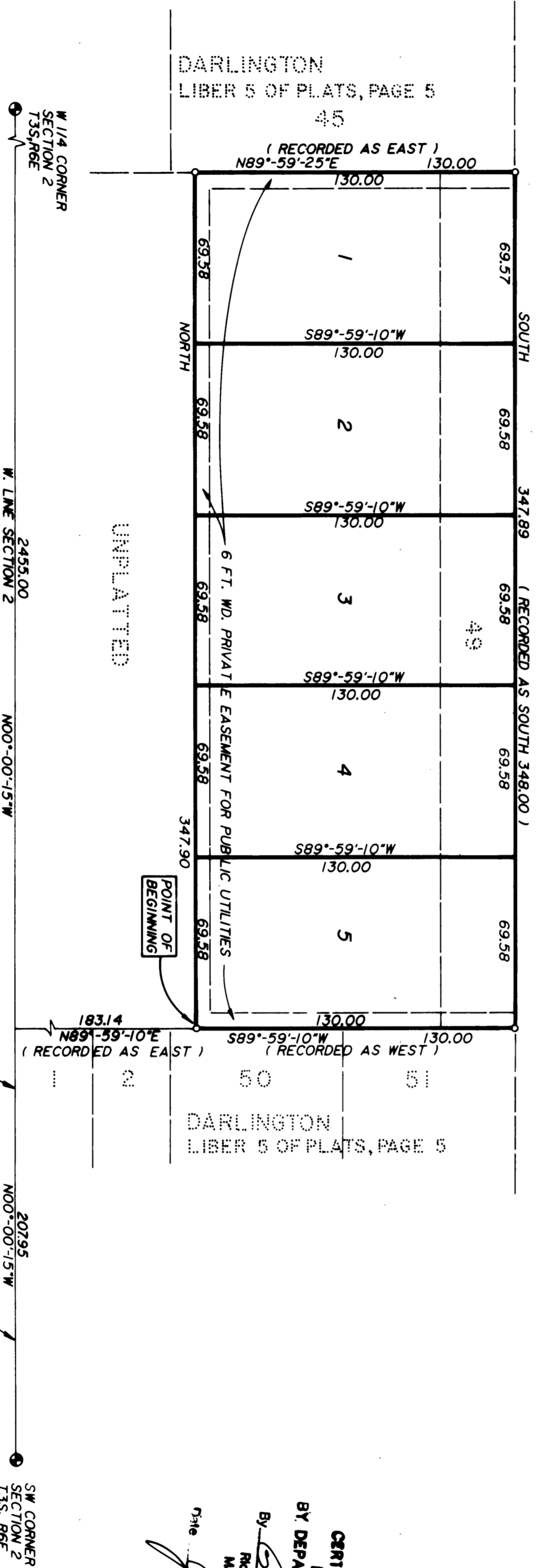
A SUBDIVISION OF PART OF THE  
S.W. 1/4 OF SECTION 2, T3S, R6E,  
CITY OF ANN ARBOR, WASHTENAW COUNTY, MICHIGAN



VICINITY SKETCH  
SCALE 1"=4000'

69	69	67	66	65	64
DARLINGTON LIBER 5 OF PLATS, PAGE 5					

ELMWOOD AVENUE (66 FT WD.)



- LEGEND**
1. ALL DIMENSIONS ARE IN FEET
  2. 1/2" X 3/8" IRON BARS ENCASED IN 4" DIAMETER CONCRETE MONUMENTS HAVE BEEN PLACED AT CORNERS MARKED 'S'
  3. LOT CORNERS HAVE BEEN MARKED WITH 1/2" X 22" IRON PIPE
  4. BEARINGS WERE ESTABLISHED FROM 'DARLINGTON' AS RECORDED IN LIBER 5 OF PLATS, PAGE 5, WASHTENAW COUNTY RECORDS.



*Norman N. Fahrner*  
NORMAN N. FAHRNER

CERTIFIED TRUE COPY OF  
RECORDED PLAT  
BY DEPARTMENT OF COMMERCE  
By *Richard E. Loman*  
Richard E. Loman, L.S.  
Manager Plat Section  
Date *January 29, 1988*

PREPARED AND DRAFTED BY  
WASHTENAW ENGINEERING COMPANY, INC.  
3250 W. LIBERTY ROAD  
ANN ARBOR, MICHIGAN 48106  
**3-F-649-1**  
SHEET 1 OF 2

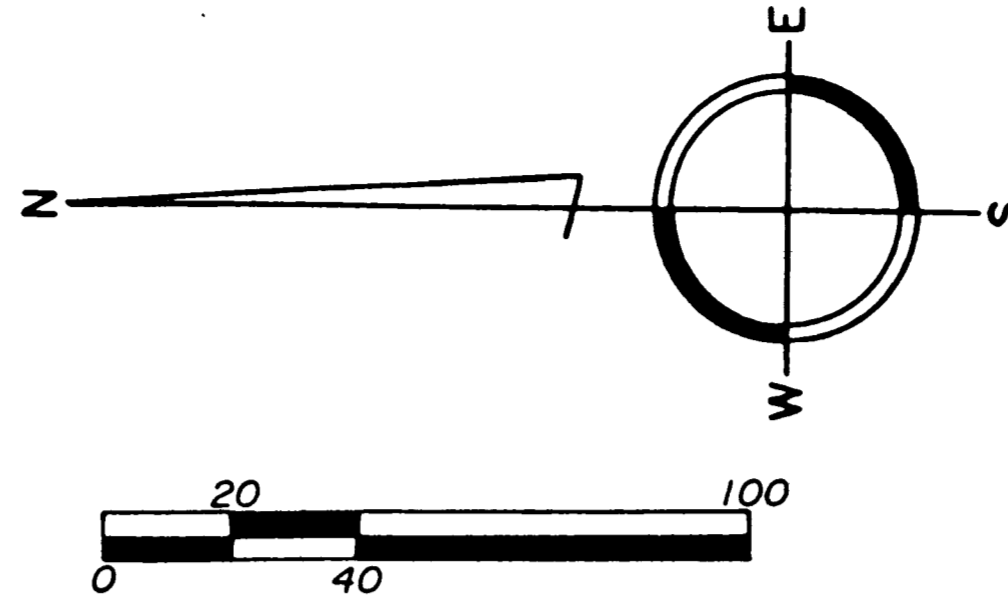
PL126002  
CUTHBERT COMMONS  
LIBER: 25 PAGE: 43-44  
2 OF 2  
12/15/1987

# CUTHBERT COMMONS

## A SUBDIVISION OF PART OF THE

## S.W. 1/4 OF SECTION 2, T3S, R6E,

## CITY OF ANN ARBOR, WASHTENAW COUNTY, MICHIGAN



### SURVEYOR'S CERTIFICATE

I, Norman N. Fahrner, Surveyor, certify: That I have surveyed, divided and mapped the land shown on this Plat, described as follows:

CUTHBERT COMMONS a subdivision of part of the S.W. 1/4 of Section 2, T3S, R6E, City of Ann Arbor, Washtenaw County, Michigan, including Lot 49 of DARLINGTON as recorded in Liber 5 of Plats, Page 5 Washtenaw County Records. Commencing at the Southwest corner of Section 2, T3S, R6E, City of Ann Arbor, Washtenaw County, Michigan; thence N00°00'15"W 207.95 feet along the West line of said Section and the West line of "DARLINGTON" as recorded in Liber 5 of Plats, Page 5, Washtenaw County Records; thence N89°59'10"E 183.14 feet along the North line of Lots 1 and 2 (and the Westerly extension thereof) of said "DARLINGTON" to the POINT OF BEGINNING; thence NORTH 347.90 feet; thence N89°59'25"E 130.00 feet along the South line of Lot 45 of said "DARLINGTON"; thence SOUTH 347.89 feet along the Westerly right-of-way line of Elmwood Avenue; thence S89°59'10"W 130.00 feet along the North line of Lots 50 and 51 of said "DARLINGTON" to the Point of Beginning. Containing 5 Lots, numbered 1 through 5 inclusive and containing 1.04 acres of land more or less.

That I have made such a survey, land-division and plat by the direction of the owners of such land.

That such plat is a correct representation of all exterior boundaries of the land surveyed and the subdivision of it.

That the required monuments and lot markers have been located in the ground or that surety has been deposited with the municipality as required by Section 125 of the Act.

The accuracy of survey is within the limits required by Section 126 of the Act.

That the bearings shown on the plat are expressed as required by Section 126 (3) of the Act and as explained in the legend.

Date June 2, 1987

Washtenaw Engineering Company  
3250 West Liberty Road  
P.O. Box 1204  
Ann Arbor, Michigan 48106



Norman N. Fahrner  
Norman N. Fahrner  
Vice-President  
Registered Land Surveyor  
Michigan No. 17620

### COUNTY TREASURER'S CERTIFICATE

The records in my office show no unpaid taxes or special assessments for the five years preceding 6-11-87 involving the land included in this plat.

Michael A. Stimpson  
Michael A. Stimpson, Washtenaw  
County Treasurer

### COUNTY DRAIN COMMISSIONERS CERTIFICATE

Approved on September 4, 1987 as complying with Section 192 of Act 288, P.A. 1967 and the applicable rule and regulations published by my office in the County of Washtenaw.

Valerie Tucker  
Valerie Tucker, Deputy Drain Commissioner  
Washtenaw County

### PROPRIETOR'S CERTIFICATE

We as proprietors certify that we caused the land embraced in this plat to be surveyed, divided, mapped and dedicated as represented on this plat and that the public utility easements are private easements and that all other easements are for the uses shown on the plat.

WITNESSES:

CUTHBERT COMMONS  
8950 Macomb  
Grosse Isle, Michigan 48138

Robert J. Mirti  
Robert J. Mirti

Ivan N. Cuthbert  
Ivan N. Cuthbert, Partner

A.M. Elliott  
A.M. Elliott

Steven Gegich  
Steven Gegich, Partner

### ACKNOWLEDGMENT

CUTHBERT COMMONS  
A Registered Michigan  
CoPartnership  
Dated July 20, 1986  
File No. 169753  
Wayne County Records

State of Michigan )  
County of Wayne ) ss

Personally came before me this 9th day of June, 1987  
Ivan N. Cuthbert, Partner and Steven Gegich, Partner of the above named partnership to me known to be the persons who executed the foregoing instrument and to me known to be such partners of said partnership and acknowledged that they executed the foregoing instrument as such partners as the free act and deed of said partnership.

William Bernardara  
William Bernardara Notary Public  
Wayne County, Michigan

My Commission expires JULY 6, 1987

### CERTIFICATE OF MUNICIPAL APPROVAL

I hereby certify that this plat was approved by the City Council of the City of Ann Arbor, at a meeting held SEPTEMBER 7th 1987 and was reviewed and found to be in compliance with Act 288, P.A. of 1967 and that the public sewer and public water systems are installed and ready for connection and the City does have proper adopted zoning and subdivision control ordinances with reference to Section 148 (4) and 186 of P.A. 288, which waives minimum lot size requirements. Proper surety has been posted with City of Ann Arbor to insure the placement of monuments and lot corners prior to SEPTEMBER 7th 1988.

W. Northcross  
W. Northcross, Clerk, City of  
Ann Arbor

### RECORDING CERTIFICATE

State of Michigan )  
Washtenaw County ) S.S.

This plat was received for record on the 15th day of December 1987 at 9:16 A.M. and recorded in Liber 25 of Plats on Pages 43-44.

Robert M. Harrison  
Robert M. Harrison, County  
Clerk/Register of Deeds

### PROPRIETOR'S CERTIFICATE

The First America Bank-Ann Arbor, a corporation duly organized and existing under the laws of the State of Michigan by, George R. Thorne, Senior Vice-President and Bryan T. Singer, Vice President as proprietor has caused the land embraced in this plat to be surveyed, divided, mapped and dedicated as represented on this plat; that the public utility easements are private easements and that all other easements are for the uses shown on the plat.

WITNESSES:

First America Bank-Ann Arbor  
101 South Main Street  
Ann Arbor, Michigan 48104

Esther C. Taphouse  
Esther C. Taphouse

George R. Thorne  
George R. Thorne,  
Senior Vice-President

Dixie M. Edwards  
Dixie M. Edwards

Bryan T. Singer  
Bryan T. Singer,  
Vice-President

### ACKNOWLEDGMENT

State of Michigan )  
County of Washtenaw ) ss

Personally came before me this 10th day of June, 1987 George R. Thorne, Senior Vice-President and Bryan T. Singer, Vice-President of the above named corporation, to me known to be the persons who executed the foregoing instrument and to me known to be such Senior Vice-President and Vice-President of said corporation, and acknowledged that they executed the foregoing instrument as such officers as their free act and deed of said corporation, by its authority.

Dixie M. Edwards  
Dixie M. Edwards Notary Public  
Washtenaw County, Michigan

My Commission expires Nov. 13, 1990

### COUNTY PLAT BOARD CERTIFICATE

This plat has been reviewed and is approved by the Washtenaw County Plat Board on 10-1-87 as being in compliance with all of the provisions of Act 288, P.A. 1967, and the Plat Board's applicable rules and regulations.

Dillard Roy Craiger  
Dillard Roy Craiger, Chair,  
Plat Board, Washtenaw  
County Board of Commissioners

Robert M. Harrison, County  
Clerk/Register of Deeds

Michael A. Stimpson  
Michael A. Stimpson,  
County Treasurer