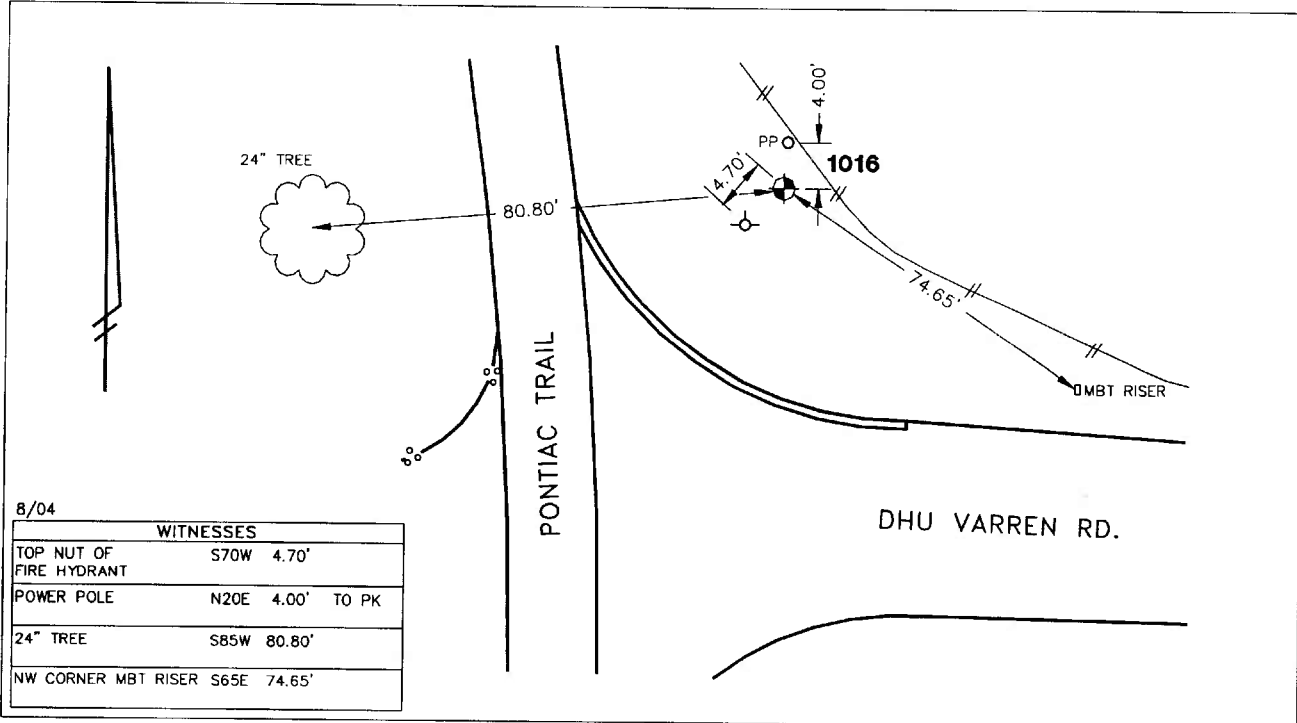


Public Services Area • Project Management Unit
CONTROL STATION DATA SHEET

Approximate Location: Dhu Varren Rd. and Pontiac Trail



STATION 1016 IS LOCATED AT THE NORTHEAST CORNER OF DHU VARREN ROAD AND PONTIAC TRAIL, SAID STATION BEING IN THE SOUTHWEST 1/4 OF SECTION 9, ANN ARBOR TOWNSHIP, MICHIGAN. THE STATION IS LOCATED 4.00' SOUTHWESTERLY OF THE POWER POLE AND 4.70' NORTHEAST OF THE FIRE HYDRANT. SAID STATION IS A VERTICAL CONTROL STATION AND IS DESCRIBED AS THE 1993 EDITION OF THE CITY OF ANN ARBOR BRASS DISC, SET IN CONCRETE PER DETAIL II AND IS FLUSH WITH THE GROUND. THIS STATION WAS SET BY THE CITY OF ANN ARBOR IN 1993.

Benchmark

Vertical

Accuracy	2nd Order Class II
Datum	NAVD 88
Elevation in meters	286.116
Elevation in International feet	938.70

No. 1016
 Sector: NW